

# Converting Colors

Hex(B98D95)

Have a look what the booklet for  
Hex(B98D95) contains.

<b>Hex(B98D95)</b> .....	3
<i><b>Conversions</b></i> .....	4
<i><b>Details</b></i> .....	6
<i><b>Harmonies</b></i> .....	11
<i><b>Previews</b></i> .....	23
<i><b>Color Blindness Simulation</b></i> .....	26
<i><b>CSS Examples</b></i> .....	29

# **Color**

**Hex(B98D95)**

# Conversions

## Conversions Part 1

Format	Color
Hex	<a href="#">B98D95</a>
RGB	<a href="#">185, 141, 149</a>
RGB Percent	<a href="#">73%, 55%, 58%</a>
CMY	<a href="#">0.2745, 0.4471, 0.4157</a>
CMYK	<a href="#">0.00, 0.24, 0.19, 0.27</a>
HSL	<a href="#">349°, 24%, 64%</a>
HSV	<a href="#">349°, 24%, 73%</a>
XYZ	<a href="#">34.9573, 31.5340, 32.6780</a>
YIQ	<a href="#">155.0680, 23.6560, 11.8160</a>

# Conversions

## Conversions Part 2

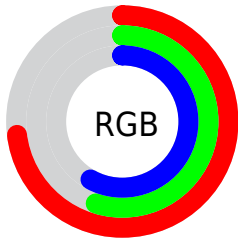
<b>Format</b>	<b>Color</b>
<b>R<sub>YB</sub></b>	185, 141, 149
Decimal	12160405
CIE <sub>Lab</sub>	62.96, 17.91, 2.23
CIE <sub>LCh</sub>	63, 18.047, 7.086
Yxy	31.5340, 0.3525, 0.3180
Android (android.graphics.Color)	4290350485 (0xFFB98D95)
YUV	155.0680, -2.9915, 26.2504
Hunter-Lab	56.1551, 12.8471, 4.8063

# Details

The Hex color **B98D95** is a light color, and the websafe version is hex **CC9999**. A complement of this color would be **8DB9B1**, and the grayscale version is **9B9B9B**.

A 20% lighter version of the original color is **F2C3CB**, and **835B62** is the 20% darker color. If you saturate the color by 10%, you get **B97B86**, and if you desaturate by 10%, it is **B9A0A4**.

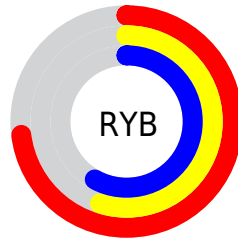
# Distribution



Red (73%)

Green (55%)

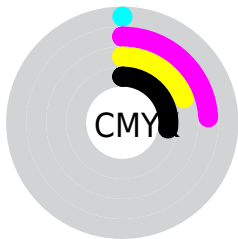
Blue (58%)



Red (73%)

Yellow (55%)

Blue (58%)

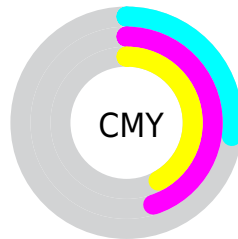


Cyan (0%)

Magenta (24%)

Yellow (19%)

Black (27%)



Cyan (27%)

Magenta (45%)

Yellow (42%)

# Brightness & Saturation Gradients

These gradients show how the Hex color B98D95 changes by changing the brightness by 10 percent. The first figure shows a shift by +10% for each color and the second figure -10%.

Similar to the brightness gradients but the following saturation gradients show a change of the Hex color B98D95 by changing the saturation by 10% instead.



 B98D95

 B98D95

FFFFFF

 9E737B

 F2C3CB

 835B62

 FFD7E7

 69434B

 FFFCFE

 512C34

 39171F

 250006

 000000

 B98D95

 B98D95

 B97B86

 B9A0A4

 B96877

 B9B2B3

 B95668

 B9C5C2

 B94358

 B9D7D2

 B93149

 B9EAE1

 B91E3A

 B9FCF0

 B90C2B

 B9FFFF

 B90022

# Harmonies

## Analogous

The Analogous color harmony consists of three colors that are next to each other on the color wheel.



B08FA5



B98D95



B88F86

# Triad

The Triadic color harmony groups three colors that are evenly spaced from another and form a triangle on the color wheel.



B98D95



8F9D7E



779DB5

# Complementary

The Complementary color scheme is a pair of colors which are on the opposite of each other on the color wheel.



B98D95



8DB9B1

# Split Complementary

Split-complementary colors differ from the complementary color scheme. The scheme consists of three colors, the original color and two neighbors of the complement color.



6DA1AB



B98D95



7DA08B

# Square

The Square scheme is like the rectangle color scheme, but the four colors are evenly spaced on the color wheel.



B98D95



A19879



70A29C



8B98B8

# Rectangle

The Rectangle color scheme consists of four colors that form a rectangle on the color wheel.



B98D95



B3917E



70A29C



739FB3



# Sweetspot

The Sweet Spot groups the original color and five complimentary colors.



B98D95



F0DFE2



B18DB9



786E70



F7F7F7



787878



# Same Dimension

The Same Dimension uses a secret algorithm to generate beautiful new colors.



B98D95



F0AAB7



B99B8D



5C5354



9C001C



1C0005



# Inverse Universe

The Inverse Universe completely reimagines the original color for something new.



B98D95



F0AAB7



8DABB9



5C5354



9C001C

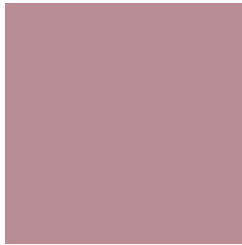


1C0005



# Previews

## White Background



This preview shows how the Hex color B98D95 looks on a white background.

## Color Contrast Check

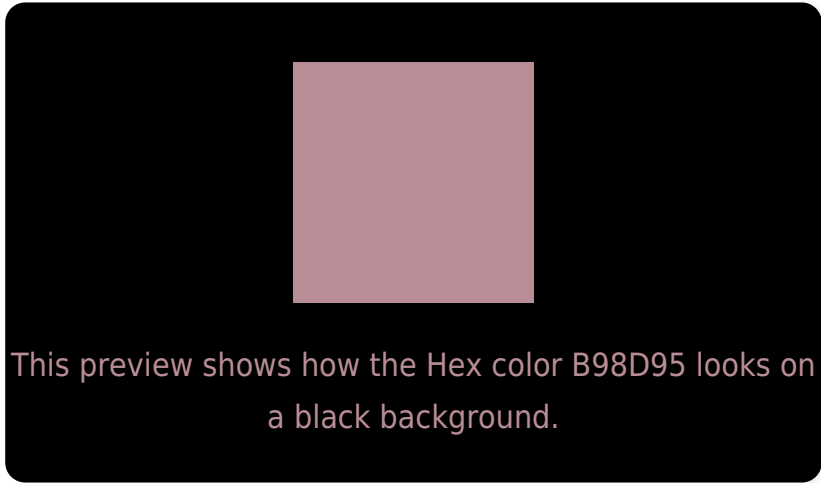
Large Text (above 18pt) WCAG AA × Fail

Any Text WCAG AA × Fail

Large Text (above 18pt) WCAG AAA × Fail

Any Text WCAG AAA × Fail

# Black Background



## Color Contrast Check

Large Text (above 18pt) WCAG AA ✓ Pass

Any Text WCAG AA ✓ Pass

Large Text (above 18pt) WCAG AAA ✓ Pass

Any Text WCAG AAA ✓ Pass

If you want to check with other color combinations, try the [Color Contrast Checker](#).



## Hex B98D95 Background



This preview shows how black text looks on a background with the Hex color B98D95.

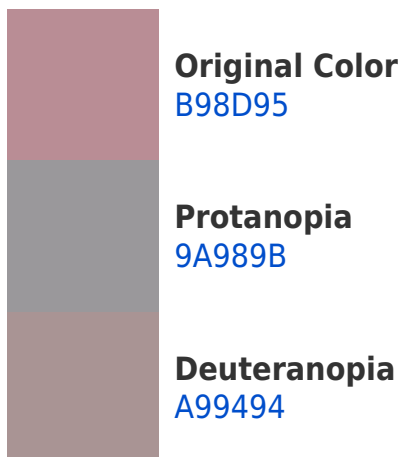


This preview shows how white text looks on a background with the Hex color B98D95.

# Color Blindness Simulation

Color vision deficiency is a very complex topic, and I could not describe the different causes any better than Wikipedia does, so if you want to learn more, you should check out their [article about color blindness](#).

## Dichromacy





**Tritanopia**  
B98D97

# Trichromacy



**Original Color**  
B98D95

**Protanomaly**  
A59499

**Deuteranomaly**  
AF9194

**Tritanomaly**  
B98D96

# Monochromacy



**Original Color**  
B98D95

**Achromatopsia**  
9B9B9B

**Achromatomaly**  
A69699

# CSS Examples

## Text

The CSS property to change the color of the text to Hex B98D95 is called "color". The color property can be set on classes, ids or directly on the HTML element.

This example shows how text in the color #B98D95 looks like.

```
.text, #text, p{  
    color:#B98D95  
}
```

If you want to add a text shadow in that color use the text-shadow property, you can generate a text shadow directly with our [CSS Text Shadow Generator](#).

Here you see how black text with a 4 pixel #B98D95 colored shadow looks like.

```
.shadow{ text-shadow: 4px 4px 2px #B98D95
}
```

## Border

The CSS property to change the border of an element to Hex B98D95 is called "border". The border property can be set on classes, ids or directly on the HTML element.

This example shows the color as border, it can be applied via the CSS property "border" or "border-color".

```
.border, #border, table{ border:4px solid
#B98D95 }
```

If only the border color should be changed use the property `border-color`.

```
.border{ border-color:#B98D95 }
```

If you want to add a box shadow in that color use:

Here you see how a box with a 4 pixel #B98D95 colored shadow looks like.

```
.boxshadow{ -moz-box-shadow:4px 4px 4px  
4px #B98D95; -webkit-box-shadow:4px 4px  
4px 4px #B98D95; box-shadow:4px 4px 4px  
4px #B98D95 }
```

# Background

The CSS property to change the background color of an element to Hex B98D95 is called "background". The background property can be set on classes, ids or directly on the HTML element.

```
.background, #background, body{  
background:#B98D95 }
```

If only the background color should be changed can be used:

```
.background{ background-color:#B98D95 }
```

This example shows the color as background, it is applied via the CSS property "background".

To optimize and compress your CSS code, you can use our [online CSS compressor and optimizer](#) based on csstidy. If you want to create a linear or radial gradient as background or border, check our [CSS Gradient Generator](#).



Hey! You found this booklet interesting? Support Converting Colors with the new Membership Option!

The pro membership hides all ads, plus gives you double the colors in the color bucket, and more awesome pro features!

**[Learn more, Memberships starting at \\$2.50/m!](#)**

**Follow me  
on Twitter!**

@ConvertingColor