

Converting Colors

Hex(B98E68)

Have a look what the booklet for
Hex(B98E68) contains.

Hex(B98E68)	3
<i>Conversions</i>	4
<i>Details</i>	6
<i>Harmonies</i>	11
<i>Previews</i>	23
<i>Color Blindness Simulation</i>	26
<i>CSS Examples</i>	29

Color

Hex(B98E68)

Conversions

Conversions Part 1

Format	Color
Hex	B98E68
RGB	185, 142, 104
RGB Percent	73%, 56%, 41%
CMY	0.2745, 0.4431, 0.5922
CMYK	0.00, 0.23, 0.44, 0.27
HSL	28°, 37%, 57%
HSV	28°, 44%, 73%
XYZ	32.1793, 30.6598, 17.3186
YIQ	150.5250, 37.8260, -2.7020

Conversions

Conversions Part 2

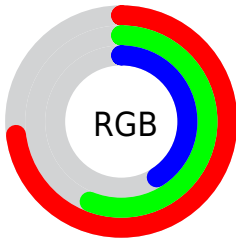
Format	Color
RYB	185, 176, 104
Decimal	12160616
CIELab	62.22, 11.33, 26.50
CIELCh	62, 28.819, 66.847
Yxy	30.6598, 0.4014, 0.3825
Android (android.graphics.Color)	4290350696 (0xFFB98E68)
YUV	150.5250, -22.9368, 30.2346
Hunter-Lab	55.3713, 6.8364, 20.2156

Details

The Hex color **B98E68** is a dark color, and the websafe version is hex **CC9966**. A complement of this color would be **6893B9**, and the grayscale version is **979797**.

A 20% lighter version of the original color is **F3C49C**, and **825C38** is the 20% darker color. If you saturate the color by 10%, you get **B98456**, and if you desaturate by 10%, it is **B9987B**.

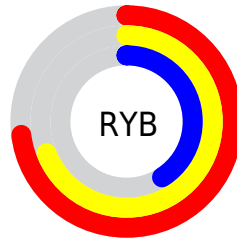
Distribution



Red (73%)

Green (56%)

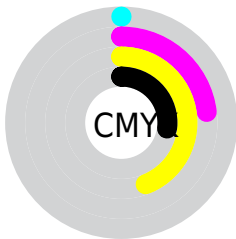
Blue (41%)



Red (73%)

Yellow (69%)

Blue (41%)

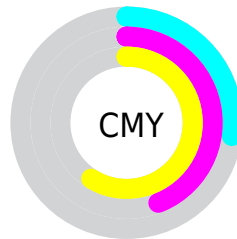


Cyan (0%)

Magenta (23%)

Yellow (44%)

Black (27%)



Cyan (27%)

Magenta (44%)

Yellow (59%)

Brightness & Saturation Gradients

These gradients show how the Hex color B98E68 changes by changing the brightness by 10 percent. The first figure shows a shift by +10% for each color and the second figure -10%.

Similar to the brightness gradients but the following saturation gradients show a change of the Hex color B98E68 by changing the saturation by 10% instead.

 B98E68

 B98E68

FFFFFF

 9D7450

 F3C49C

 825C38

 FFE0B7

 674422

 FFFCD2

 4E2E0C

 FFFFEE

 351900

 1E0000

 000000

 B98E68

 B98E68

 B98456

 B9987B

 B97A43

 B9A28D

 B97131

 B9ABA0

 B9671E

 B9B5B2

 B95D0C

 B9BFC5

 B95700

 B9C9D7

 B9D3EA

 B9DDFC

 B9E6FF

Harmonies

Analogous

The Analogous color harmony consists of three colors that are next to each other on the color wheel.



C78679



B98E68



A29763

Triad

The Triadic color harmony groups three colors that are evenly spaced from another and form a triangle on the color wheel.



B98E68



4CA49C



A18EBF

Complementary

The Complementary color scheme is a pair of colors which are on the opposite of each other on the color wheel.



B98E68



6893B9

Split Complementary

Split-complementary colors differ from the complementary color scheme. The scheme consists of three colors, the original color and two neighbors of the complement color.



7D97C9



B98E68



41A3B4

Square

The Square scheme is like the rectangle color scheme, but the four colors are evenly spaced on the color wheel.



B98E68



68A381



579EC5



BC86AB

Rectangle

The Rectangle color scheme consists of four colors that form a rectangle on the color wheel.



B98E68



909C68



579EC5



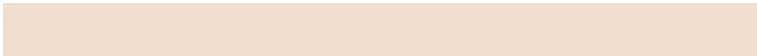
9691C4

Sweetspot

The Sweet Spot groups the original color and five complimentary colors.



B98E68



F0DFD1



B96893



786E65



F7F7F7



787878

Same Dimension

The Same Dimension uses a secret algorithm to generate beautiful new colors.



B98E68



F0AC71



B9B668



5C5753



9C4900



1C0D00

Inverse Universe

The Inverse Universe completely reimagines the original color for something new.



6893B9



71B4F0



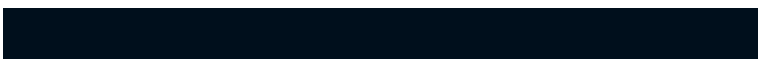
686BB9



53575C



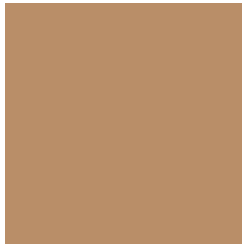
00539C



000F1C

Previews

White Background



This preview shows how the Hex color B98E68 looks on a white background.

Color Contrast Check

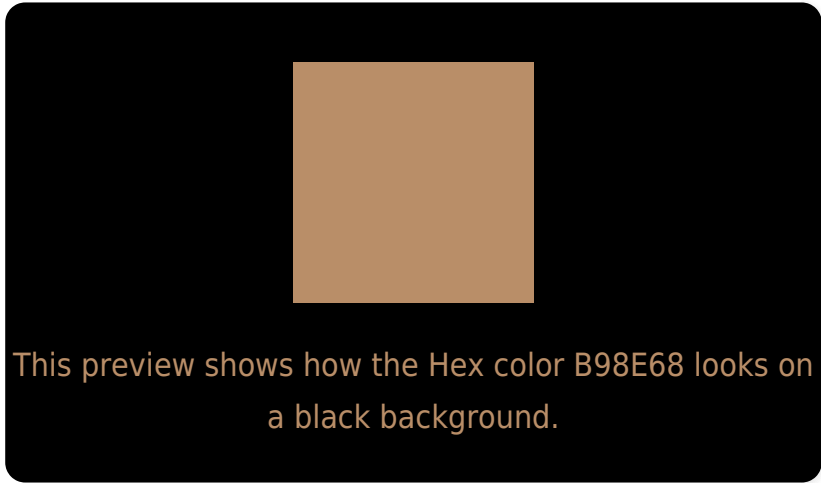
Large Text (above 18pt) WCAG AA × Fail

Any Text WCAG AA × Fail

Large Text (above 18pt) WCAG AAA × Fail

Any Text WCAG AAA × Fail

Black Background



Color Contrast Check

Large Text (above 18pt) WCAG AA ✓ Pass

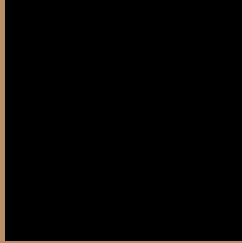
Any Text WCAG AA ✓ Pass

Large Text (above 18pt) WCAG AAA ✓ Pass

Any Text WCAG AAA ✓ Pass

If you want to check with other color combinations, try the [Color Contrast Checker](#).

Hex B98E68 Background



This preview shows how black text looks on a background with the Hex color B98E68.



This preview shows how white text looks on a background with the Hex color B98E68.

Color Blindness Simulation

Color vision deficiency is a very complex topic, and I could not describe the different causes any better than Wikipedia does, so if you want to learn more, you should check out their [article about color blindness](#).

Dichromacy



Original Color
B98E68

Protanopia
A2976C

Deuteranopia
B49068

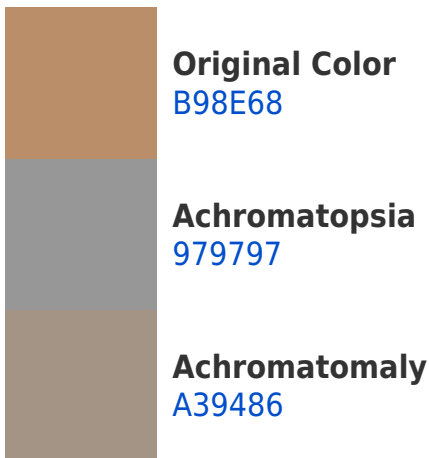


Tritanopia
BD8893

Trichromacy



Monochromacy



CSS Examples

Text

The CSS property to change the color of the text to Hex B98E68 is called "color". The color property can be set on classes, ids or directly on the HTML element.

This example shows how text in the color #B98E68 looks like.

```
.text, #text, p{  
    color:#B98E68  
}
```

If you want to add a text shadow in that color use the text-shadow property, you can generate a text shadow directly with our [CSS Text Shadow Generator](#).

Here you see how black text with a 4 pixel #B98E68 colored shadow looks like.

```
.shadow{ text-shadow: 4px 4px 2px #B98E68  
}
```

Border

The CSS property to change the border of an element to Hex B98E68 is called "border". The border property can be set on classes, ids or directly on the HTML element.

This example shows the color as border, it can be applied via the CSS property "border" or "border-color".

```
.border, #border, table{ border:4px solid  
#B98E68 }
```

If only the border color should be changed use the property `border-color`.

```
.border{ border-color:#B98E68 }
```

If you want to add a box shadow in that color use:

Here you see how a box with a 4 pixel #B98E68 colored shadow looks like.

```
.boxshadow{ -moz-box-shadow:4px 4px 4px  
4px #B98E68; -webkit-box-shadow:4px 4px  
4px 4px #B98E68; box-shadow:4px 4px 4px  
4px #B98E68 }
```

Background

The CSS property to change the background color of an element to Hex B98E68 is called "background". The background property can be set on classes, ids or directly on the HTML element.

```
.background, #background, body{  
background:#B98E68 }
```

If only the background color should be changed can be used:

```
.background{ background-color:#B98E68 }
```

This example shows the color as background, it is applied via the CSS property "background".

To optimize and compress your CSS code, you can use our [online CSS compressor and optimizer](#) based on csstidy. If you want to create a linear or radial gradient as background or border, check our [CSS Gradient Generator](#).

Hey! You found this booklet interesting? Support Converting Colors with the new Membership Option!

The pro membership hides all ads, plus gives you double the colors in the color bucket, and more awesome pro features!

[Learn more, Memberships starting at \\$2.50/m!](#)

**Follow me
on Twitter!**

@ConvertingColor