

Converting Colors

Hex(B99090)

Have a look what the booklet for
Hex(B99090) contains.

Hex(B99090)	3
<i>Conversions</i>	4
<i>Details</i>	6
<i>Harmonies</i>	11
<i>Previews</i>	23
<i>Color Blindness Simulation</i>	26
<i>CSS Examples</i>	29

Color

Hex(B99090)

Conversions

Conversions Part 1

Format	Color
Hex	B99090
RGB	185, 144, 144
RGB Percent	73%, 56%, 56%
CMY	0.2745, 0.4353, 0.4353
CMYK	0.00, 0.22, 0.22, 0.27
HSL	0°, 23%, 65%
HSV	0°, 22%, 73%
XYZ	35.0149, 32.2744, 30.7697
YIQ	156.2590, 24.4360, 8.6920

Conversions

Conversions Part 2

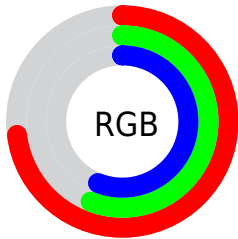
Format	Color
R _Y B	185, 144, 144
Decimal	12161168
CIE Lab	63.57, 15.46, 5.94
CIE LCh	64, 16.566, 21.022
Yxy	32.2744, 0.3571, 0.3291
Android (android.graphics.Color)	4290351248 (0xFFB99090)
YUV	156.2590, -6.0437, 25.2059
Hunter-Lab	56.8106, 10.5990, 7.6548

Details

The Hex color **B99090** is a light color, and the websafe version is hex **CC9999**. A complement of this color would be **90B9B9**, and the grayscale version is **9C9C9C**.

A 20% lighter version of the original color is **F2C6C6**, and **835D5E** is the 20% darker color. If you saturate the color by 10%, you get **B97E7E**, and if you desaturate by 10%, it is **B9A3A3**.

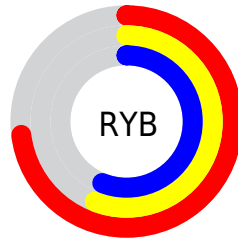
Distribution



Red (73%)

Green (56%)

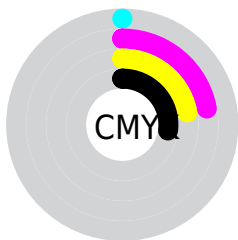
Blue (56%)



Red (73%)

Yellow (56%)

Blue (56%)

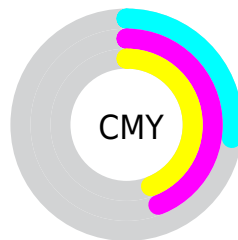


Cyan (0%)

Magenta (22%)

Yellow (22%)

Black (27%)



Cyan (27%)

Magenta (44%)

Yellow (44%)

Brightness & Saturation Gradients

These gradients show how the Hex color B99090 changes by changing the brightness by 10 percent. The first figure shows a shift by +10% for each color and the second figure -10%.

Similar to the brightness gradients but the following saturation gradients show a change of the Hex color B99090 by changing the saturation by 10% instead.

 B99090

 B99090

FFFFFF

 9E7676

 F2C6C6

 835D5E

 FFE2E2

 694646

FFFFFFE

 502F30

 391A1B

 250000

 000000

 B99090

 B99090

 B97E7E

 B9A3A3

 B96B6B

 B9B5B5

 B95959

 B9C8C8

 B94646

 B9DADA

 B93434

 B9EDED

 B92121

 B9FFFF

 B90E0E

 B90000

Harmonies

Analogous

The Analogous color harmony consists of three colors that are next to each other on the color wheel.



B5909F



B99090



B59384

Triad

The Triadic color harmony groups three colors that are evenly spaced from another and form a triangle on the color wheel.



B99090



89A087



849DB7

Complementary

The Complementary color scheme is a pair of colors which are on the opposite of each other on the color wheel.



B99090



90B9B9

Split Complementary

Split-complementary colors differ from the complementary color scheme. The scheme consists of three colors, the original color and two neighbors of the complement color.



76A0B0



B99090



7BA295

Square

The Square scheme is like the rectangle color scheme, but the four colors are evenly spaced on the color wheel.



B99090



9A9C7E



73A2A4



9798B5

Rectangle

The Rectangle color scheme consists of four colors that form a rectangle on the color wheel.



B99090



AE967E



73A2A4



7E9EB5

Sweetspot

The Sweet Spot groups the original color and five complimentary colors.



B99090



F0DFDF



B990B9



786E6E



F7F7F7



787878

Same Dimension

The Same Dimension uses a secret algorithm to generate beautiful new colors.



B99090



F0AFAF



B9A590



5C5353



9C0000



1C0000

Inverse Universe

The Inverse Universe completely reimagines the original color for something new.



90B9B9



AFF0F0



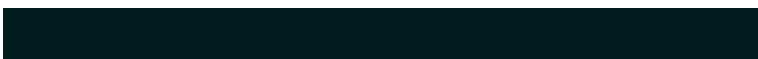
90A5B9



535C5C



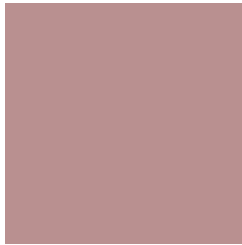
009C9C



001C1C

Previews

White Background



This preview shows how the Hex color B99090 looks on a white background.

Color Contrast Check

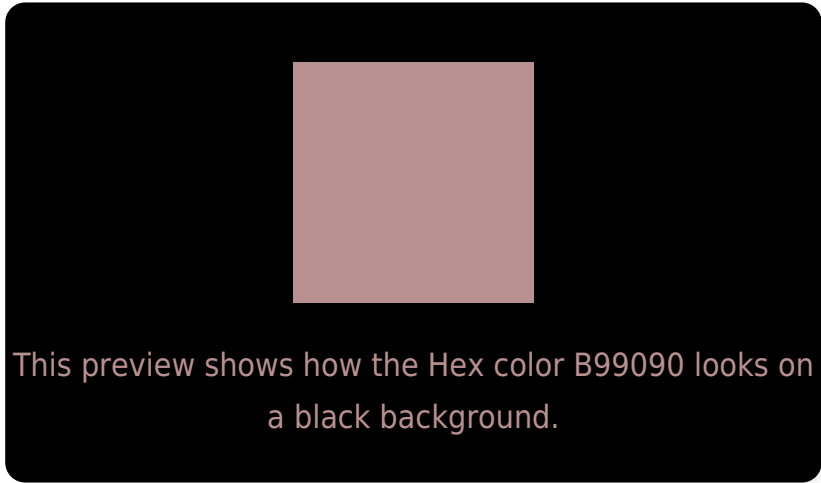
Large Text (above 18pt) WCAG AA × Fail

Any Text WCAG AA × Fail

Large Text (above 18pt) WCAG AAA × Fail

Any Text WCAG AAA × Fail

Black Background



Color Contrast Check

Large Text (above 18pt) WCAG AA ✓ Pass

Any Text WCAG AA ✓ Pass

Large Text (above 18pt) WCAG AAA ✓ Pass

Any Text WCAG AAA ✓ Pass

If you want to check with other color combinations, try the [Color Contrast Checker](#).

Hex B99090 Background



This preview shows how black text looks on a background with the Hex color B99090.



This preview shows how white text looks on a background with the Hex color B99090.

Color Blindness Simulation

Color vision deficiency is a very complex topic, and I could not describe the different causes any better than Wikipedia does, so if you want to learn more, you should check out their [article about color blindness](#).

Dichromacy



Original Color
B99090

Protanopia
9E9A95

Deuteranopia
AD958F



Tritanopia
BA8F9A

Trichromacy



Original Color
B99090

Protanomaly
A89693

Deuteranomaly
B1938F

Tritanomaly
BA8F96

Monochromacy



Original Color
B99090

Achromatopsia
9C9C9C

Achromatomaly
A79898

CSS Examples

Text

The CSS property to change the color of the text to Hex B99090 is called "color". The color property can be set on classes, ids or directly on the HTML element.

This example shows how text in the color #B99090 looks like.

```
.text, #text, p{  
    color:#B99090  
}
```

If you want to add a text shadow in that color use the text-shadow property, you can generate a text shadow directly with our [CSS Text Shadow Generator](#).

Here you see how black text with a 4 pixel #B99090 colored shadow looks like.

```
.shadow{ text-shadow: 4px 4px 2px #B99090
}
```

Border

The CSS property to change the border of an element to Hex B99090 is called "border". The border property can be set on classes, ids or directly on the HTML element.

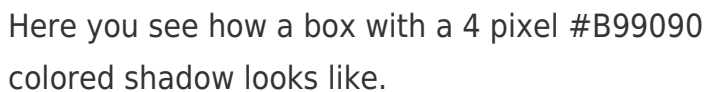
This example shows the color as border, it can be applied via the CSS property "border" or "border-color".

```
.border, #border, table{ border:4px solid
#B99090 }
```

If only the border color should be changed use the property `border-color`.

```
.border{ border-color:#B99090 }
```

If you want to add a box shadow in that color use:



Here you see how a box with a 4 pixel #B99090 colored shadow looks like.

```
.boxshadow{ -moz-box-shadow:4px 4px 4px  
4px #B99090; -webkit-box-shadow:4px 4px  
4px 4px #B99090; box-shadow:4px 4px 4px  
4px #B99090 }
```

Background

The CSS property to change the background color of an element to Hex B99090 is called "background". The background property can be set on classes, ids or directly on the HTML element.

```
.background, #background, body{  
background:#B99090 }
```

If only the background color should be changed can be used:

```
.background{ background-color:#B99090 }
```

This example shows the color as background, it is applied via the CSS property "background".

To optimize and compress your CSS code, you can use our [online CSS compressor and optimizer](#) based on csstidy. If you want to create a linear or radial gradient as background or border, check our [CSS Gradient Generator](#).

Hey! You found this booklet interesting? Support Converting Colors with the new Membership Option!

The pro membership hides all ads, plus gives you double the colors in the color bucket, and more awesome pro features!

[Learn more, Memberships starting at \\$2.50/m!](#)

**Follow me
on Twitter!**

@ConvertingColor