

Converting Colors

Hex(B99158)

Have a look what the booklet for
Hex(B99158) contains.

Hex(B99158)	3
<i>Conversions</i>	4
<i>Details</i>	6
<i>Harmonies</i>	11
<i>Previews</i>	23
<i>Color Blindness Simulation</i>	26
<i>CSS Examples</i>	29

Color

Hex(B99158)

Conversions

Conversions Part 1

Format	Color
Hex	B99158
RGB	185, 145, 88
RGB Percent	73%, 57%, 35%
CMY	0.2745, 0.4314, 0.6549
CMYK	0.00, 0.22, 0.52, 0.27
HSL	35°, 41%, 54%
HSV	35°, 52%, 73%
XYZ	31.8944, 31.2697, 13.5871
YIQ	150.4620, 42.1370, -9.2470

Conversions

Conversions Part 2

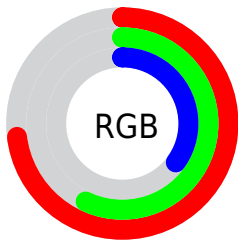
Format	Color
RYB	156, 185, 88
Decimal	12161368
CIELab	62.73, 8.08, 35.81
CIELCh	63, 36.706, 77.285
Yxy	31.2697, 0.4156, 0.4074
Android (android.graphics.Color)	4290351448 (0xFFB99158)
YUV	150.4620, -30.7938, 30.2898
Hunter-Lab	55.9193, 3.9515, 24.7373

Details

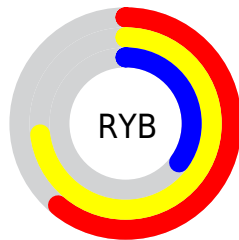
The Hex color **B99158** is a dark color, and the websafe version is hex **CC9966**. A complement of this color would be **5880B9**, and the grayscale version is **979797**.

A 20% lighter version of the original color is **F3C78B**, and **815F28** is the 20% darker color. If you saturate the color by 10%, you get **B98946**, and if you desaturate by 10%, it is **B9996B**.

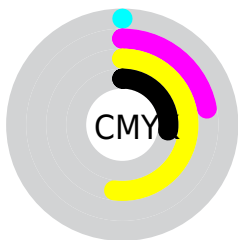
Distribution



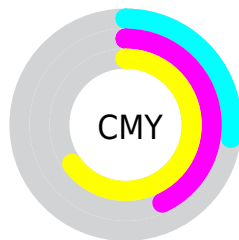
- Red (73%)
- Green (57%)
- Blue (35%)



- Red (61%)
- Yellow (73%)
- Blue (35%)



- Cyan (0%)
- Magenta (22%)
- Yellow (52%)
- Black (27%)



- Cyan (27%)
- Magenta (43%)
- Yellow (65%)

Brightness & Saturation Gradients

These gradients show how the Hex color B99158 changes by changing the brightness by 10 percent. The first figure shows a shift by +10% for each color and the second figure -10%.

Similar to the brightness gradients but the following saturation gradients show a change of the Hex color B99158 by changing the saturation by 10% instead.

 B99158

 B99158

FFFFFF

 9D7740

 F3C78B

 815F28

 FFE3A6

 664711

 FFFFC1

 4D3100

 FFFFDD

 331C00

 FFFFFA

 1B0300

 000000

 B99158

 B99158

 B98946

 B9996B

 B98233

 B9A07D

 B97A21

 B9A890

 B9720E

 B9B0A2

 B96D00

 B9B7B5

 B9BFC7

 B9C6DA

 B9CEEC

 B9D6FE

Harmonies

Analogous

The Analogous color harmony consists of three colors that are next to each other on the color wheel.



CF8669



B99158



9A9C58

Triad

The Triadic color harmony groups three colors that are evenly spaced from another and form a triangle on the color wheel.



B99158



00A9AA



B388C4

Complementary

The Complementary color scheme is a pair of colors which are on the opposite of each other on the color wheel.



B99158



5880B9

Split Complementary

Split-complementary colors differ from the complementary color scheme. The scheme consists of three colors, the original color and two neighbors of the complement color.



8694D6



B99158



00A6C7

Square

The Square scheme is like the rectangle color scheme, but the four colors are evenly spaced on the color wheel.



B99158



49A888



4C9FD7



CE80A7

Rectangle

The Rectangle color scheme consists of four colors that form a rectangle on the color wheel.



B99158



82A163



4C9FD7



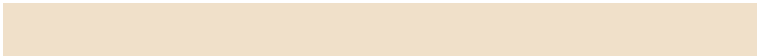
A68CCC

Sweetspot

The Sweet Spot groups the original color and five complimentary colors.



B99158



F0E0C9



B95880



786E61



F7F7F7



787878

Same Dimension

The Same Dimension uses a secret algorithm to generate beautiful new colors.



B99158



F0B159



B1B958



5C5853



9C5B00



1C1000

Inverse Universe

The Inverse Universe completely reimagines the original color for something new.



5880B9



5997F0



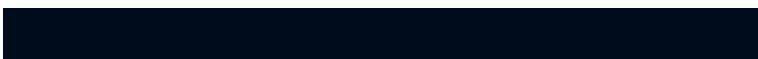
6058B9



53565C



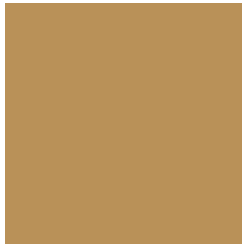
00409C



000C1C

Previews

White Background



This preview shows how the Hex color B99158 looks on a white background.

Color Contrast Check

Large Text (above 18pt) WCAG AA × Fail

Any Text WCAG AA × Fail

Large Text (above 18pt) WCAG AAA × Fail

Any Text WCAG AAA × Fail

Black Background



Color Contrast Check

Large Text (above 18pt) WCAG AA ✓ Pass

Any Text WCAG AA ✓ Pass

Large Text (above 18pt) WCAG AAA ✓ Pass

Any Text WCAG AAA ✓ Pass

If you want to check with other color combinations, try the [Color Contrast Checker](#).

Hex B99158 Background



This preview shows how black text looks on a background with the Hex color B99158.



This preview shows how white text looks on a background with the Hex color B99158.

Color Blindness Simulation

Color vision deficiency is a very complex topic, and I could not describe the different causes any better than Wikipedia does, so if you want to learn more, you should check out their [article about color blindness](#).


Dichromacy



Original Color
B99158

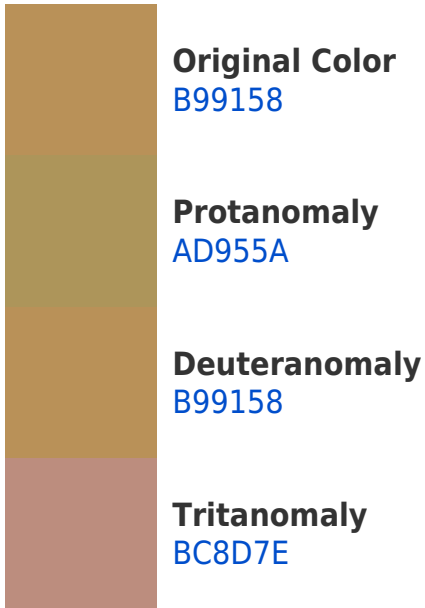
Protanopia
A6985B

Deuteranopia
B99158

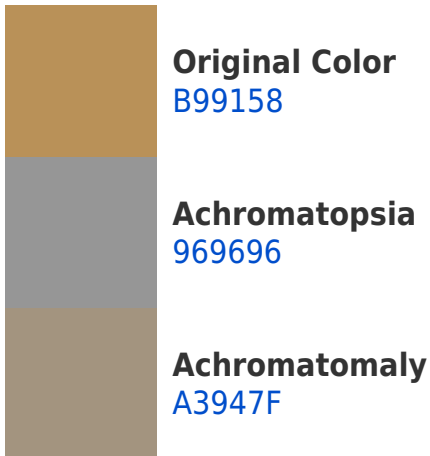


Tritanopia
BE8A94

Trichromacy



Monochromacy



CSS Examples

Text

The CSS property to change the color of the text to Hex B99158 is called "color". The color property can be set on classes, ids or directly on the HTML element.

This example shows how text in the color #B99158 looks like.

```
.text, #text, p{  
    color:#B99158  
}
```

If you want to add a text shadow in that color use the text-shadow property, you can generate a text shadow directly with our [CSS Text Shadow Generator](#).

Here you see how black text with a 4 pixel #B99158 colored shadow looks like.

```
.shadow{ text-shadow: 4px 4px 2px #B99158
}
```

Border

The CSS property to change the border of an element to Hex B99158 is called "border". The border property can be set on classes, ids or directly on the HTML element.

This example shows the color as border, it can be applied via the CSS property "border" or "border-color".

```
.border, #border, table{ border:4px solid
#B99158 }
```

If only the border color should be changed use the property `border-color`.

```
.border{ border-color:#B99158 }
```

If you want to add a box shadow in that color use:

Here you see how a box with a 4 pixel #B99158 colored shadow looks like.

```
.boxshadow{ -moz-box-shadow:4px 4px 4px  
4px #B99158; -webkit-box-shadow:4px 4px  
4px 4px #B99158; box-shadow:4px 4px 4px  
4px #B99158 }
```

Background

The CSS property to change the background color of an element to Hex B99158 is called "background". The background property can be set on classes, ids or directly on the HTML element.

```
.background, #background, body{  
background:#B99158 }
```

If only the background color should be changed can be used:

```
.background{ background-color:#B99158 }
```

This example shows the color as background, it is applied via the CSS property "background".

To optimize and compress your CSS code, you can use our [online CSS compressor and optimizer](#) based on csstidy. If you want to create a linear or radial gradient as background or border, check our [CSS Gradient Generator](#).

Hey! You found this booklet interesting? Support Converting Colors with the new Membership Option!

The pro membership hides all ads, plus gives you double the colors in the color bucket, and more awesome pro features!

[Learn more, Memberships starting at \\$2.50/m!](#)

**Follow me
on Twitter!**

@ConvertingColor