

Converting Colors

Hex(B99362)

Have a look what the booklet for
Hex(B99362) contains.

Hex(B99362)	3
<i>Conversions</i>	4
<i>Details</i>	6
<i>Harmonies</i>	11
<i>Previews</i>	23
<i>Color Blindness Simulation</i>	26
<i>CSS Examples</i>	29

Color

Hex(B99362)

Conversions

Conversions Part 1

Format	Color
Hex	B99362
RGB	185, 147, 98
RGB Percent	73%, 58%, 38%
CMY	0.2745, 0.4235, 0.6157
CMYK	0.00, 0.21, 0.47, 0.27
HSL	34°, 38%, 55%
HSV	34°, 47%, 73%
XYZ	32.6459, 32.0636, 16.0235
YIQ	152.7760, 38.3770, -7.1830

Conversions

Conversions Part 2

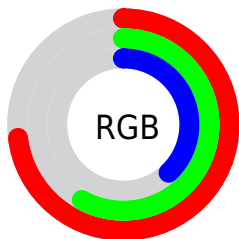
Format	Color
RYB	165, 185, 98
Decimal	12161890
CIELab	63.40, 7.94, 31.30
CIELCh	63, 32.288, 75.767
Yxy	32.0636, 0.4044, 0.3972
Android (android.graphics.Color)	4290351970 (0xFFB99362)
YUV	152.7760, -27.0046, 28.2604
Hunter-Lab	56.6247, 3.8176, 22.8595

Details

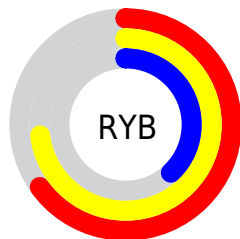
The Hex color **B99362** is a dark color, and the websafe version is hex **CC9966**. A complement of this color would be **6288B9**, and the grayscale version is **999999**.

A 20% lighter version of the original color is **F3C995**, and **826132** is the 20% darker color. If you saturate the color by 10%, you get **B98B50**, and if you desaturate by 10%, it is **B99B75**.

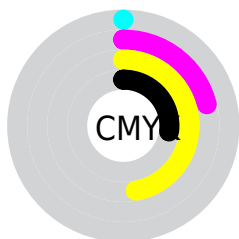
Distribution



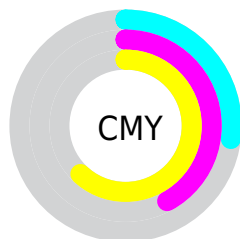
- Red (73%)
- Green (58%)
- Blue (38%)



- Red (65%)
- Yellow (73%)
- Blue (38%)



- Cyan (0%)
- Magenta (21%)
- Yellow (47%)
- Black (27%)



- Cyan (27%)
- Magenta (42%)
- Yellow (62%)

Brightness & Saturation Gradients

These gradients show how the Hex color B99362 changes by changing the brightness by 10 percent. The first figure shows a shift by +10% for each color and the second figure -10%.

Similar to the brightness gradients but the following saturation gradients show a change of the Hex color B99362 by changing the saturation by 10% instead.

 B99362

 B99362

FFFFFF

 9D794A

 F3C995

 826132

 FFE5B0

 67491C

 FFFFCC

 4D3204

 FFFFEE

 351D00

 1D0600

 000000

 B99362

 B99362

 B98B50

 B99B75

 B9833D

 B9A387

 B97B2B

 B9AB9A

 B97318

 B9B3AC

 B96B05

 B9BBBE

 B96800

 B9C3D1

 B9CCE4

 B9D4F6

 B9DCFF

Harmonies

Analogous

The Analogous color harmony consists of three colors that are next to each other on the color wheel.



CC8A72



B99362



9E9D61

Triad

The Triadic color harmony groups three colors that are evenly spaced from another and form a triangle on the color wheel.



B99362



38A9A8



B08DC2

Complementary

The Complementary color scheme is a pair of colors which are on the opposite of each other on the color wheel.



B99362



6288B9

Split Complementary

Split-complementary colors differ from the complementary color scheme. The scheme consists of three colors, the original color and two neighbors of the complement color.



8997D1



B99362



34A6C2

Square

The Square scheme is like the rectangle color scheme, but the four colors are evenly spaced on the color wheel.



B99362



5AA88A



5BA0D1



C985A8

Rectangle

The Rectangle color scheme consists of four colors that form a rectangle on the color wheel.



B99362



88A26A



5BA0D1



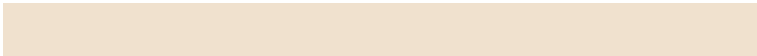
A490C8

Sweetspot

The Sweet Spot groups the original color and five complimentary colors.



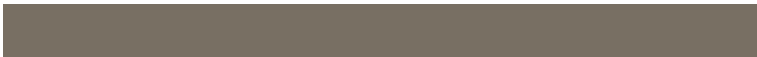
B99362



F0E1CE



B96289



786F63



F7F7F7



787878

Same Dimension

The Same Dimension uses a secret algorithm to generate beautiful new colors.



B99362



F0B569



B5B962



5C5853



9C5800



1C1000

Inverse Universe

The Inverse Universe completely reimagines the original color for something new.



6288B9



69A4F0



6662B9



53575C



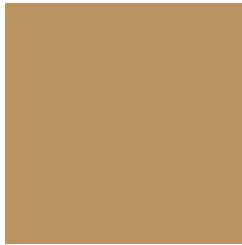
00449C



000C1C

Previews

White Background



This preview shows how the Hex color B99362 looks on a white background.

Color Contrast Check

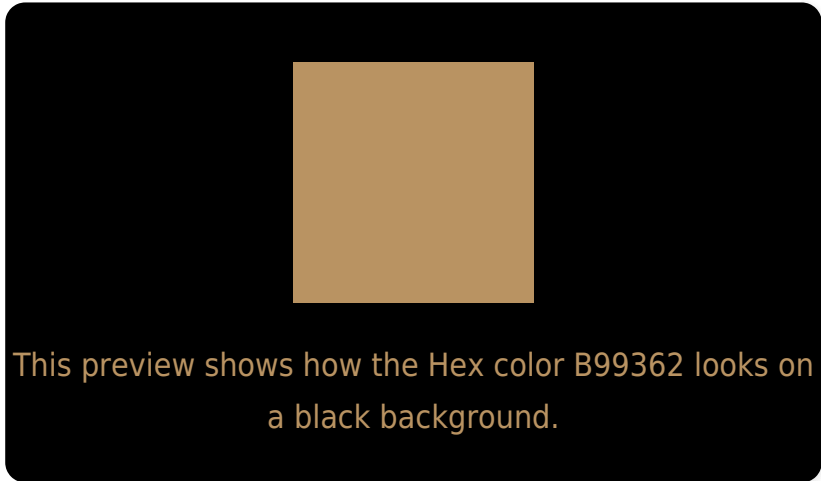
Large Text (above 18pt) WCAG AA × Fail

Any Text WCAG AA × Fail

Large Text (above 18pt) WCAG AAA × Fail

Any Text WCAG AAA × Fail

Black Background



Color Contrast Check

Large Text (above 18pt) WCAG AA ✓ Pass

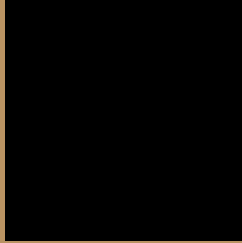
Any Text WCAG AA ✓ Pass

Large Text (above 18pt) WCAG AAA ✓ Pass

Any Text WCAG AAA ✓ Pass

If you want to check with other color combinations, try the [Color Contrast Checker](#).

Hex B99362 Background



This preview shows how black text looks on a background with the Hex color B99362.



This preview shows how white text looks on a background with the Hex color B99362.

Color Blindness Simulation

Color vision deficiency is a very complex topic, and I could not describe the different causes any better than Wikipedia does, so if you want to learn more, you should check out their [article about color blindness](#).

Dichromacy



Original Color
B99362

Protanopia
A79A65

Deuteranopia
B99362

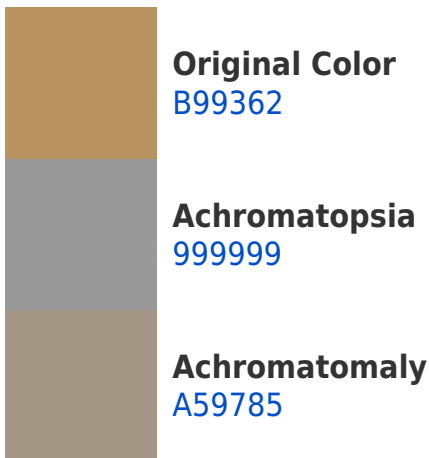


Tritanopia
BE8C97

Trichromacy



Monochromacy



CSS Examples

Text

The CSS property to change the color of the text to Hex B99362 is called "color". The color property can be set on classes, ids or directly on the HTML element.

This example shows how text in the color #B99362 looks like.

```
.text, #text, p{  
    color:#B99362  
}
```

If you want to add a text shadow in that color use the text-shadow property, you can generate a text shadow directly with our [CSS Text Shadow Generator](#).

Here you see how black text with a 4 pixel #B99362 colored shadow looks like.

```
.shadow{ text-shadow: 4px 4px 2px #B99362
}
```

Border

The CSS property to change the border of an element to Hex B99362 is called "border". The border property can be set on classes, ids or directly on the HTML element.

This example shows the color as border, it can be applied via the CSS property "border" or "border-color".

```
.border, #border, table{ border:4px solid
#B99362 }
```

If only the border color should be changed use the property `border-color`.

```
.border{ border-color:#B99362 }
```

If you want to add a box shadow in that color use:

Here you see how a box with a 4 pixel #B99362 colored shadow looks like.

```
.boxshadow{ -moz-box-shadow:4px 4px 4px  
4px #B99362; -webkit-box-shadow:4px 4px  
4px 4px #B99362; box-shadow:4px 4px 4px  
4px #B99362 }
```

Background

The CSS property to change the background color of an element to Hex B99362 is called "background". The background property can be set on classes, ids or directly on the HTML element.

```
.background, #background, body{  
background:#B99362 }
```

If only the background color should be changed can be used:

```
.background{ background-color:#B99362 }
```

This example shows the color as background, it is applied via the CSS property "background".

To optimize and compress your CSS code, you can use our [online CSS compressor and optimizer](#) based on csstidy. If you want to create a linear or radial gradient as background or border, check our [CSS Gradient Generator](#).

Hey! You found this booklet interesting? Support Converting Colors with the new Membership Option!

The pro membership hides all ads, plus gives you double the colors in the color bucket, and more awesome pro features!

[Learn more, Memberships starting at \\$2.50/m!](#)

**Follow me
on Twitter!**

@ConvertingColor