

Converting Colors

Hex(B99391)

Have a look what the booklet for
Hex(B99391) contains.

Hex(B99391)	3
<i>Conversions</i>	4
<i>Details</i>	6
<i>Harmonies</i>	11
<i>Previews</i>	23
<i>Color Blindness Simulation</i>	26
<i>CSS Examples</i>	29

Color

Hex(B99391)

Conversions

Conversions Part 1

Format	Color
Hex	B99391
RGB	185, 147, 145
RGB Percent	73%, 58%, 57%
CMY	0.2745, 0.4235, 0.4314
CMYK	0.00, 0.21, 0.22, 0.27
HSL	3°, 22%, 65%
HSV	3°, 22%, 73%
XYZ	35.5521, 33.2261, 31.3275
YIQ	158.1340, 23.2900, 7.4340

Conversions

Conversions Part 2

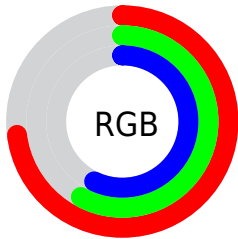
Format	Color
RYB	185, 147, 145
Decimal	12161937
CIELab	64.34, 13.95, 6.49
CIELCh	64, 15.384, 24.950
Yxy	33.2261, 0.3551, 0.3319
Android (android.graphics.Color)	4290352017 (0xFFB99391)
YUV	158.1340, -6.4751, 23.5615
Hunter-Lab	57.6420, 9.2206, 8.1263

Details

The Hex color **B99391** is a light color, and the websafe version is hex **CC9999**. A complement of this color would be **91B7B9**, and the grayscale version is **9E9E9E**.

A 20% lighter version of the original color is **F2C9C7**, and **83605F** is the 20% darker color. If you saturate the color by 10%, you get **B9817F**, and if you desaturate by 10%, it is **B9A5A3**.

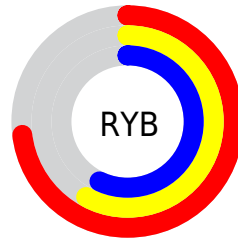
Distribution



Red (73%)

Green (58%)

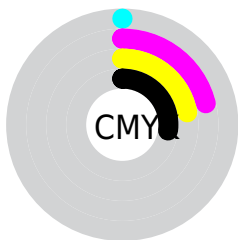
Blue (57%)



Red (73%)

Yellow (58%)

Blue (57%)

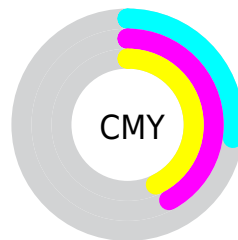


Cyan (0%)

Magenta (21%)

Yellow (22%)

Black (27%)



Cyan (27%)

Magenta (42%)

Yellow (43%)

Brightness & Saturation Gradients

These gradients show how the Hex color B99391 changes by changing the brightness by 10 percent. The first figure shows a shift by +10% for each color and the second figure -10%.

Similar to the brightness gradients but the following saturation gradients show a change of the Hex color B99391 by changing the saturation by 10% instead.

 B99391

 B99391

FFFFFF

 9E7977

 F2C9C7

 83605F

 FFE5E3

 6A4847

 513231

 391C1C

 250401

 000000

 B99391

 B99391

 B9817F

 B9A5A3

 B9706C

 B9B6B6

 B95E5A

 B9C8C9

 B94D47

 B9D9DB

 B93B35

 B9EBED

 B92A22

 B9FCFF

 B91810

 B9FFFF

 B90900

Harmonies

Analogous

The Analogous color harmony consists of three colors that are next to each other on the color wheel.



B6939F



B99391



B49686

Triad

The Triadic color harmony groups three colors that are evenly spaced from another and form a triangle on the color wheel.



B99391



8BA28C



8A9EB7

Complementary

The Complementary color scheme is a pair of colors which are on the opposite of each other on the color wheel.



B99391



91B7B9

Split Complementary

Split-complementary colors differ from the complementary color scheme. The scheme consists of three colors, the original color and two neighbors of the complement color.



7CA2B2



B99391



7EA499

Square

The Square scheme is like the rectangle color scheme, but the four colors are evenly spaced on the color wheel.



B99391



9A9F83



78A4A7



9C99B5

Rectangle

The Rectangle color scheme consists of four colors that form a rectangle on the color wheel.



B99391



AD9982



78A4A7



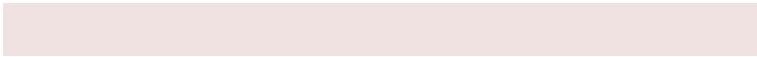
859FB6

Sweetspot

The Sweet Spot groups the original color and five complimentary colors.



B99391



F0E2E1



B991B7



78706F



F7F7F7



787878

Same Dimension

The Same Dimension uses a secret algorithm to generate beautiful new colors.



B99391



F0B4B1



B9A691



5C5353



9C0800



1C0100

Inverse Universe

The Inverse Universe completely reimagines the original color for something new.



91B7B9



B1EDF0



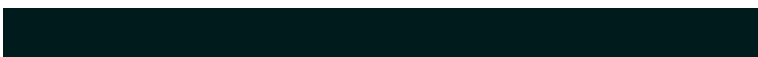
91A3B9



535B5C



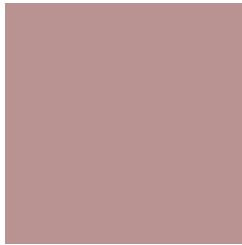
00949C



001B1C

Previews

White Background



This preview shows how the Hex color B99391 looks on a white background.

Color Contrast Check

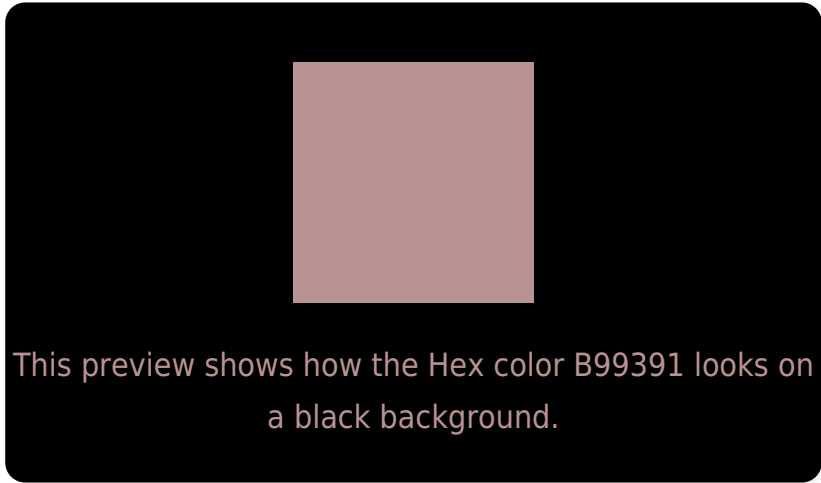
Large Text (above 18pt) WCAG AA × Fail

Any Text WCAG AA × Fail

Large Text (above 18pt) WCAG AAA × Fail

Any Text WCAG AAA × Fail

Black Background



Color Contrast Check

Large Text (above 18pt) WCAG AA ✓ Pass

Any Text WCAG AA ✓ Pass

Large Text (above 18pt) WCAG AAA ✓ Pass

Any Text WCAG AAA ✓ Pass

If you want to check with other color combinations, try the [Color Contrast Checker](#).

Hex B99391 Background



This preview shows how black text looks on a background with the Hex color B99391.



This preview shows how white text looks on a background with the Hex color B99391.

Color Blindness Simulation

Color vision deficiency is a very complex topic, and I could not describe the different causes any better than Wikipedia does, so if you want to learn more, you should check out their [article about color blindness](#).


Dichromacy



Original Color
B99391

Protanopia
A19C96

Deuteranopia
B09790



Tritanopia
BA919C

Trichromacy



Original Color
B99391

Protanomaly
AA9994

Deuteranomaly
B39690

Tritanomaly
BA9298

Monochromacy



Original Color
B99391

Achromatopsia
9E9E9E

Achromatomaly
A89A99

CSS Examples

Text

The CSS property to change the color of the text to Hex B99391 is called "color". The color property can be set on classes, ids or directly on the HTML element.

This example shows how text in the color #B99391 looks like.

```
.text, #text, p{  
    color:#B99391  
}
```

If you want to add a text shadow in that color use the text-shadow property, you can generate a text shadow directly with our [CSS Text Shadow Generator](#).

Here you see how black text with a 4 pixel #B99391 colored shadow looks like.

```
.shadow{ text-shadow: 4px 4px 2px #B99391
}
```

Border

The CSS property to change the border of an element to Hex B99391 is called "border". The border property can be set on classes, ids or directly on the HTML element.

This example shows the color as border, it can be applied via the CSS property "border" or "border-color".

```
.border, #border, table{ border:4px solid
#B99391 }
```

If only the border color should be changed use the property `border-color`.

```
.border{ border-color:#B99391 }
```

If you want to add a box shadow in that color use:

Here you see how a box with a 4 pixel #B99391 colored shadow looks like.

```
.boxshadow{ -moz-box-shadow:4px 4px 4px  
4px #B99391; -webkit-box-shadow:4px 4px  
4px 4px #B99391; box-shadow:4px 4px 4px  
4px #B99391 }
```

Background

The CSS property to change the background color of an element to Hex B99391 is called "background". The background property can be set on classes, ids or directly on the HTML element.

```
.background, #background, body{  
background:#B99391 }
```

If only the background color should be changed can be used:

```
.background{ background-color:#B99391 }
```

This example shows the color as background, it is applied via the CSS property "background".

To optimize and compress your CSS code, you can use our [online CSS compressor and optimizer](#) based on csstidy. If you want to create a linear or radial gradient as background or border, check our [CSS Gradient Generator](#).

Hey! You found this booklet interesting? Support Converting Colors with the new Membership Option!

The pro membership hides all ads, plus gives you double the colors in the color bucket, and more awesome pro features!

[Learn more, Memberships starting at \\$2.50/m!](#)

**Follow me
on Twitter!**

@ConvertingColor