

Converting Colors

Hex(B99566)

Have a look what the booklet for
Hex(B99566) contains.

Hex(B99566)	3
<i>Conversions</i>	4
<i>Details</i>	6
<i>Harmonies</i>	11
<i>Previews</i>	23
<i>Color Blindness Simulation</i>	26
<i>CSS Examples</i>	29

Color

Hex(B99566)

Conversions

Conversions Part 1

Format	Color
Hex	B99566
RGB	185, 149, 102
RGB Percent	73%, 58%, 40%
CMY	0.2745, 0.4157, 0.6000
CMYK	0.00, 0.19, 0.45, 0.27
HSL	34°, 37%, 56%
HSV	34°, 45%, 73%
XYZ	33.1533, 32.7685, 17.1480
YIQ	154.4060, 36.5430, -6.9850

Conversions

Conversions Part 2

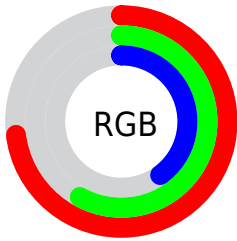
Format	Color
RYB	166, 185, 102
Decimal	12162406
CIELab	63.97, 7.25, 29.88
CIElCh	64, 30.747, 76.354
Yxy	32.7685, 0.3991, 0.3945
Android (android.graphics.Color)	4290352486 (0xFFB99566)
YUV	154.4060, -25.8362, 26.8309
Hunter-Lab	57.2438, 3.2035, 22.3097

Details

The Hex color **B99566** is a dark color, and the websafe version is hex **CC9966**. A complement of this color would be **668AB9**, and the grayscale version is **9B9B9B**.

A 20% lighter version of the original color is **F3CB9A**, and **826236** is the 20% darker color. If you saturate the color by 10%, you get **B98D54**, and if you desaturate by 10%, it is **B99D79**.

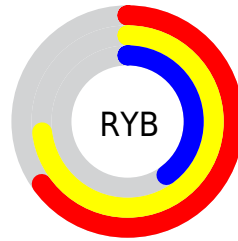
Distribution



Red (73%)

Green (58%)

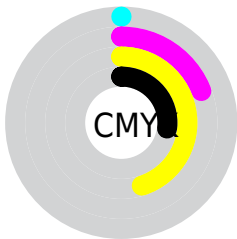
Blue (40%)



Red (65%)

Yellow (73%)

Blue (40%)

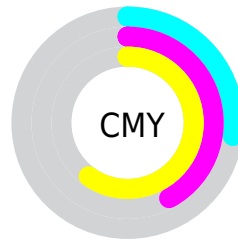


Cyan (0%)

Magenta (19%)

Yellow (45%)

Black (27%)



Cyan (27%)

Magenta (42%)

Yellow (60%)

Brightness & Saturation Gradients

These gradients show how the Hex color B99566 changes by changing the brightness by 10 percent. The first figure shows a shift by +10% for each color and the second figure -10%.

Similar to the brightness gradients but the following saturation gradients show a change of the Hex color B99566 by changing the saturation by 10% instead.

 B99566

 B99566

FFFFFF

 9D7B4E

 F3CB9A

 826236

 FFE7B5

 674B1F

 FFFFD0

 4E3408

 FFFFED

 351F00

 1D0800

 000000

 B99566

 B99566

 B98D54

 B99D79

 B98541

 B9A58B

 B97D2F

 B9AD9D

 B9751C

 B9B5B0

 B96D09

 B9BDC3

 B96900

 B9C5D5

 B9CDE8

 B9D5FA

 B9DDFF

Harmonies

Analogous

The Analogous color harmony consists of three colors that are next to each other on the color wheel.



CB8C75



B99566



9F9E66

Triad

The Triadic color harmony groups three colors that are evenly spaced from another and form a triangle on the color wheel.



B99566



42AAA9



B18FC1

Complementary

The Complementary color scheme is a pair of colors which are on the opposite of each other on the color wheel.



B99566



668AB9

Split Complementary

Split-complementary colors differ from the complementary color scheme. The scheme consists of three colors, the original color and two neighbors of the complement color.



8D98CF



B99566



40A7C2

Square

The Square scheme is like the rectangle color scheme, but the four colors are evenly spaced on the color wheel.



B99566



5FA98D



62A1D0



C988A9

Rectangle

The Rectangle color scheme consists of four colors that form a rectangle on the color wheel.



B99566



8AA36E



62A1D0



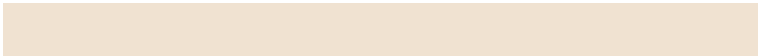
A692C7

Sweetspot

The Sweet Spot groups the original color and five complimentary colors.



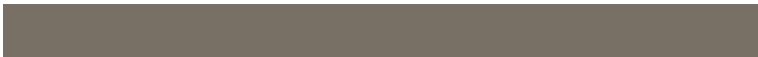
B99566



F0E2D1



B9668B



787065



F7F7F7



787878

Same Dimension

The Same Dimension uses a secret algorithm to generate beautiful new colors.



B99566



F0B86E



B5B966



5C5853



9C5800



1C1000

Inverse Universe

The Inverse Universe completely reimagines the original color for something new.



668AB9



6EA6F0



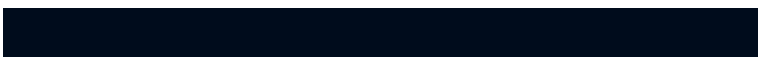
6A66B9



53575C



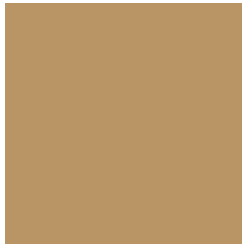
00439C



000C1C

Previews

White Background



This preview shows how the Hex color B99566 looks on a white background.

Color Contrast Check

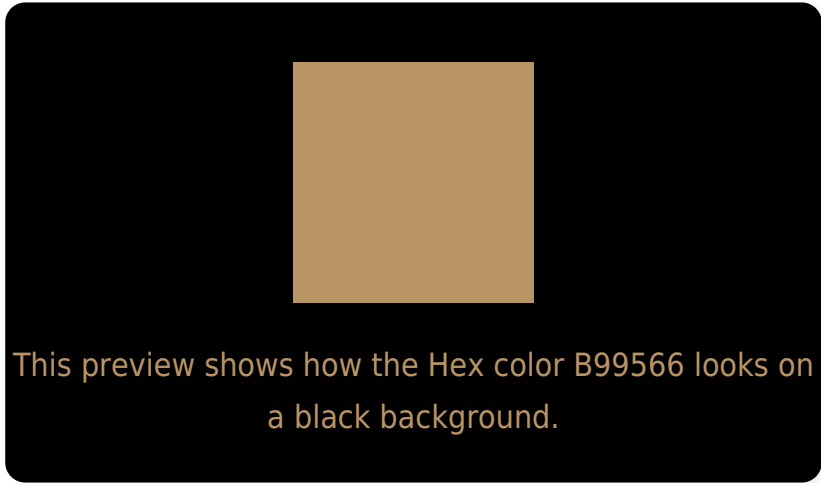
Large Text (above 18pt) WCAG AA × Fail

Any Text WCAG AA × Fail

Large Text (above 18pt) WCAG AAA × Fail

Any Text WCAG AAA × Fail

Black Background



Color Contrast Check

Large Text (above 18pt) WCAG AA ✓ Pass

Any Text WCAG AA ✓ Pass

Large Text (above 18pt) WCAG AAA ✓ Pass

Any Text WCAG AAA ✓ Pass

If you want to check with other color combinations, try the [Color Contrast Checker](#).

Hex B99566 Background



This preview shows how black text looks on a background with the Hex color B99566.

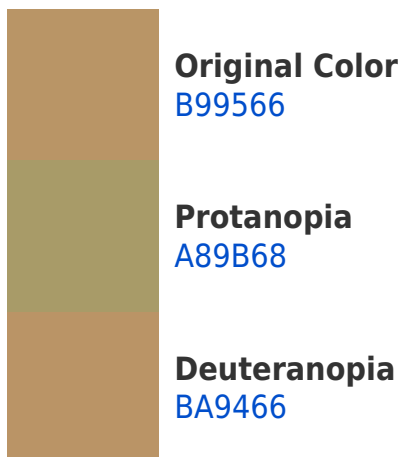


This preview shows how white text looks on a background with the Hex color B99566.

Color Blindness Simulation

Color vision deficiency is a very complex topic, and I could not describe the different causes any better than Wikipedia does, so if you want to learn more, you should check out their [article about color blindness](#).

Dichromacy





Tritanopia
BE8E99

Trichromacy



Original Color
B99566

Protanomaly
AE9967

Deuteranomaly
BA9466

Tritanomaly
BC9186

Monochromacy



Original Color
B99566

Achromatopsia
9A9A9A

Achromatomaly
A59887

CSS Examples

Text

The CSS property to change the color of the text to Hex B99566 is called "color". The color property can be set on classes, ids or directly on the HTML element.

This example shows how text in the color #B99566 looks like.

```
.text, #text, p{  
    color:#B99566  
}
```

If you want to add a text shadow in that color use the text-shadow property, you can generate a text shadow directly with our [CSS Text Shadow Generator](#).

Here you see how black text with a 4 pixel #B99566 colored shadow looks like.

```
.shadow{ text-shadow: 4px 4px 2px #B99566
}
```

Border

The CSS property to change the border of an element to Hex B99566 is called "border". The border property can be set on classes, ids or directly on the HTML element.

This example shows the color as border, it can be applied via the CSS property "border" or "border-color".

```
.border, #border, table{ border:4px solid
#B99566 }
```

If only the border color should be changed use the property `border-color`.

```
.border{ border-color:#B99566 }
```

If you want to add a box shadow in that color use:

Here you see how a box with a 4 pixel #B99566 colored shadow looks like.

```
.boxshadow{ -moz-box-shadow:4px 4px 4px  
4px #B99566; -webkit-box-shadow:4px 4px  
4px 4px #B99566; box-shadow:4px 4px 4px  
4px #B99566 }
```

Background

The CSS property to change the background color of an element to Hex B99566 is called "background". The background property can be set on classes, ids or directly on the HTML element.

```
.background, #background, body{  
background:#B99566 }
```

If only the background color should be changed can be used:

```
.background{ background-color:#B99566 }
```

This example shows the color as background, it is applied via the CSS property "background".

To optimize and compress your CSS code, you can use our [online CSS compressor and optimizer](#) based on csstidy. If you want to create a linear or radial gradient as background or border, check our [CSS Gradient Generator](#).

Hey! You found this booklet interesting? Support Converting Colors with the new Membership Option!

The pro membership hides all ads, plus gives you double the colors in the color bucket, and more awesome pro features!

[Learn more, Memberships starting at \\$2.50/m!](#)

**Follow me
on Twitter!**

@ConvertingColor