

Converting Colors

Hex(B99669)

Have a look what the booklet for
Hex(B99669) contains.

Hex(B99669)	3
<i>Conversions</i>	4
<i>Details</i>	6
<i>Harmonies</i>	11
<i>Previews</i>	23
<i>Color Blindness Simulation</i>	26
<i>CSS Examples</i>	29

Color

Hex(B99669)

Conversions

Conversions Part 1

Format	Color
Hex	B99669
RGB	185, 150, 105
RGB Percent	73%, 59%, 41%
CMY	0.2745, 0.4118, 0.5882
CMYK	0.00, 0.19, 0.43, 0.27
HSL	34°, 36%, 57%
HSV	34°, 43%, 73%
XYZ	33.4637, 33.1469, 17.9989
YIQ	155.3350, 35.3050, -6.5750

Conversions

Conversions Part 2

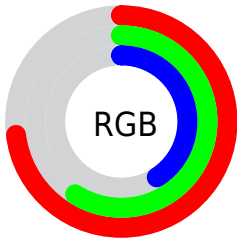
Format	Color
RYB	167, 185, 105
Decimal	12162665
CIELab	64.28, 7.03, 28.65
CIELCh	64, 29.499, 76.219
Yxy	33.1469, 0.3955, 0.3918
Android (android.graphics.Color)	4290352745 (0xFFB99669)
YUV	155.3350, -24.8152, 26.0162
Hunter-Lab	57.5733, 2.9974, 21.7658

Details

The Hex color **B99669** is a dark color, and the websafe version is hex **CC9966**. A complement of this color would be **698CB9**, and the grayscale version is **9C9C9C**.

A 20% lighter version of the original color is **F2CC9D**, and **826339** is the 20% darker color. If you saturate the color by 10%, you get **B98E56**, and if you desaturate by 10%, it is **B99E7C**.

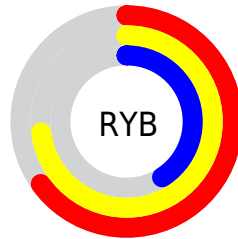
Distribution



Red (73%)

Green (59%)

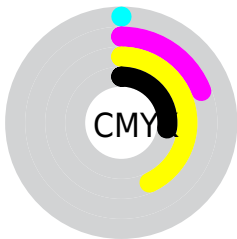
Blue (41%)



Red (65%)

Yellow (73%)

Blue (41%)

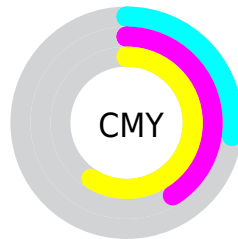


Cyan (0%)

Magenta (19%)

Yellow (43%)

Black (27%)



Cyan (27%)

Magenta (41%)

Yellow (59%)

Brightness & Saturation Gradients

These gradients show how the Hex color B99669 changes by changing the brightness by 10 percent. The first figure shows a shift by +10% for each color and the second figure -10%.

Similar to the brightness gradients but the following saturation gradients show a change of the Hex color B99669 by changing the saturation by 10% instead.



B99669



B99669

FFFFFF



9D7C50



F2CC9D



826339



FFE8B8



684C22



FFFFD4



4E350C



FFFFF0



362000



1E0900



000000



B99669



B99669



B98E56



B99E7C

 B98644

 B9A68E

 B97E32

 B9AEA1

 B9761F

 B9B6B3

 B96E0C

 B9BEC5

 B96800

 B9C7D8

 B9CFEB

 B9D7FD

 B9DFFF

Harmonies

Analogous

The Analogous color harmony consists of three colors that are next to each other on the color wheel.



CB8D77



B99669



A09F69

Triad

The Triadic color harmony groups three colors that are evenly spaced from another and form a triangle on the color wheel.



B99669



49AAAA



B190C0

Complementary

The Complementary color scheme is a pair of colors which are on the opposite of each other on the color wheel.



B99669



698CB9

Split Complementary

Split-complementary colors differ from the complementary color scheme. The scheme consists of three colors, the original color and two neighbors of the complement color.



8E99CE



B99669



48A8C1

Square

The Square scheme is like the rectangle color scheme, but the four colors are evenly spaced on the color wheel.



B99669



63A98E



66A2CE



C889A9

Rectangle

The Rectangle color scheme consists of four colors that form a rectangle on the color wheel.



B99669



8CA471



66A2CE



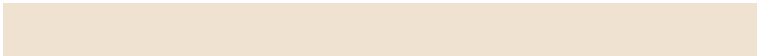
A793C6

Sweetspot

The Sweet Spot groups the original color and five complimentary colors.



B99669



F0E2D1



B9698D



786F65



F7F7F7



787878

Same Dimension

The Same Dimension uses a secret algorithm to generate beautiful new colors.



B99669



F0B973



B5B969



5C5853



9C5700



1C1000

Inverse Universe

The Inverse Universe completely reimagines the original color for something new.



698CB9



73AAF0



6D69B9



53575C



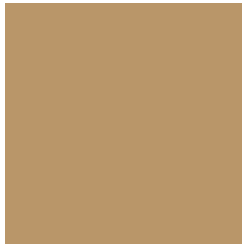
00449C



000C1C

Previews

White Background



This preview shows how the Hex color B99669 looks on a white background.

Color Contrast Check

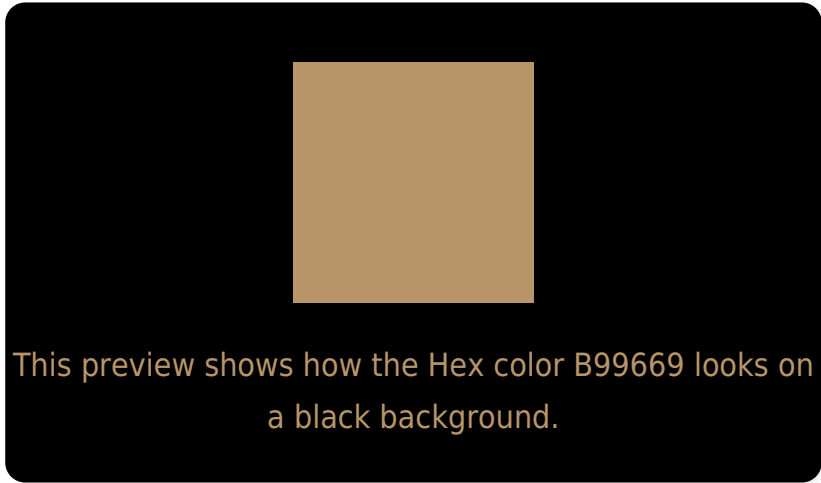
Large Text (above 18pt) WCAG AA × Fail

Any Text WCAG AA × Fail

Large Text (above 18pt) WCAG AAA × Fail

Any Text WCAG AAA × Fail

Black Background



Color Contrast Check

Large Text (above 18pt) WCAG AA ✓ Pass

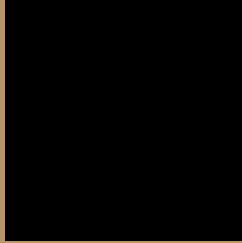
Any Text WCAG AA ✓ Pass

Large Text (above 18pt) WCAG AAA ✓ Pass

Any Text WCAG AAA ✓ Pass

If you want to check with other color combinations, try the [Color Contrast Checker](#).

Hex B99669 Background



This preview shows how black text looks on a background with the Hex color B99669.



This preview shows how white text looks on a background with the Hex color B99669.

Color Blindness Simulation

Color vision deficiency is a very complex topic, and I could not describe the different causes any better than Wikipedia does, so if you want to learn more, you should check out their [article about color blindness](#).

Dichromacy



Original Color
B99669

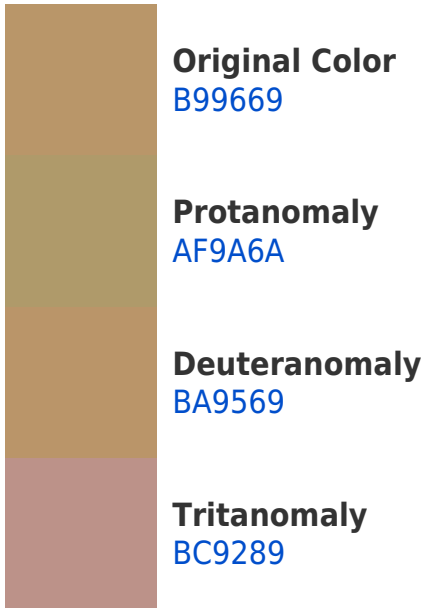
Protanopia
A99C6B

Deuteranopia
BB9569

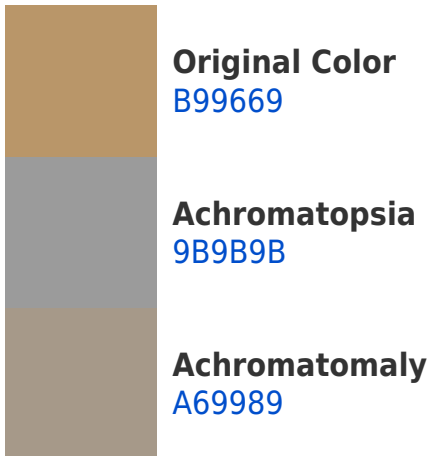


Tritanopia
BE909B

Trichromacy



Monochromacy



CSS Examples

Text

The CSS property to change the color of the text to Hex B99669 is called "color". The color property can be set on classes, ids or directly on the HTML element.

This example shows how text in the color #B99669 looks like.

```
.text, #text, p{  
    color:#B99669  
}
```

If you want to add a text shadow in that color use the text-shadow property, you can generate a text shadow directly with our [CSS Text Shadow Generator](#).

Here you see how black text with a 4 pixel #B99669 colored shadow looks like.

```
.shadow{ text-shadow: 4px 4px 2px #B99669
}
```

Border

The CSS property to change the border of an element to Hex B99669 is called "border". The border property can be set on classes, ids or directly on the HTML element.

This example shows the color as border, it can be applied via the CSS property "border" or "border-color".

```
.border, #border, table{ border:4px solid
#B99669 }
```

If only the border color should be changed use the property border-color.

```
.border{ border-color:#B99669 }
```

If you want to add a box shadow in that color use:

Here you see how a box with a 4 pixel #B99669 colored shadow looks like.

```
.boxshadow{ -moz-box-shadow:4px 4px 4px  
4px #B99669; -webkit-box-shadow:4px 4px  
4px 4px #B99669; box-shadow:4px 4px 4px  
4px #B99669 }
```

Background

The CSS property to change the background color of an element to Hex B99669 is called "background". The background property can be set on classes, ids or directly on the HTML element.

```
.background, #background, body{  
background:#B99669 }
```

If only the background color should be changed can be used:

```
.background{ background-color:#B99669 }
```

This example shows the color as background, it is applied via the CSS property "background".

To optimize and compress your CSS code, you can use our [online CSS compressor and optimizer](#) based on csstidy. If you want to create a linear or radial gradient as background or border, check our [CSS Gradient Generator](#).

Hey! You found this booklet interesting? Support Converting Colors with the new Membership Option!

The pro membership hides all ads, plus gives you double the colors in the color bucket, and more awesome pro features!

[Learn more, Memberships starting at \\$2.50/m!](#)

**Follow me
on Twitter!**

@ConvertingColor