

Converting Colors

Hex(B99670)

Have a look what the booklet for
Hex(B99670) contains.

Hex(B99670)	3
<i>Conversions</i>	4
<i>Details</i>	6
<i>Harmonies</i>	11
<i>Previews</i>	23
<i>Color Blindness Simulation</i>	26
<i>CSS Examples</i>	29

Color

Hex(B99670)

Conversions

Conversions Part 1

Format	Color
Hex	B99670
RGB	185, 150, 112
RGB Percent	73%, 59%, 44%
CMY	0.2745, 0.4118, 0.5608
CMYK	0.00, 0.19, 0.39, 0.27
HSL	31°, 34%, 58%
HSV	31°, 39%, 73%
XYZ	33.8386, 33.2968, 19.9727
YIQ	156.1330, 33.0580, -4.3980

Conversions

Conversions Part 2

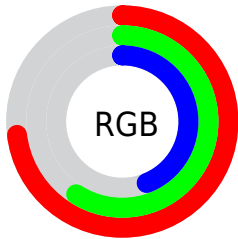
Format	Color
RYB	179, 185, 112
Decimal	12162672
CIELab	64.40, 7.82, 24.98
CIElCh	64, 26.179, 72.621
Yxy	33.2968, 0.3885, 0.3822
Android (android.graphics.Color)	4290352752 (0xFFB99670)
YUV	156.1330, -21.7576, 25.3164
Hunter-Lab	57.7034, 3.6954, 19.8705

Details

The Hex color **B99670** is a light color, and the websafe version is hex **CC9966**. A complement of this color would be **7093B9**, and the grayscale version is **9C9C9C**.

A 20% lighter version of the original color is **F2CCA4**, and **826340** is the 20% darker color. If you saturate the color by 10%, you get **B98D5E**, and if you desaturate by 10%, it is **B99F83**.

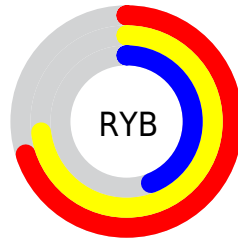
Distribution



Red (73%)

Green (59%)

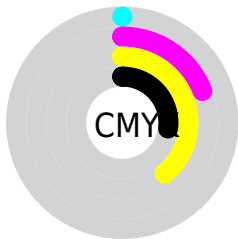
Blue (44%)



Red (70%)

Yellow (73%)

Blue (44%)

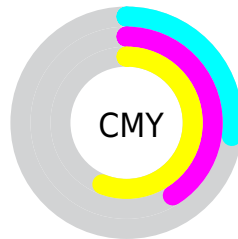


Cyan (0%)

Magenta (19%)

Yellow (39%)

Black (27%)



Cyan (27%)

Magenta (41%)

Yellow (56%)

Brightness & Saturation Gradients

These gradients show how the Hex color B99670 changes by changing the brightness by 10 percent. The first figure shows a shift by +10% for each color and the second figure -10%.

Similar to the brightness gradients but the following saturation gradients show a change of the Hex color B99670 by changing the saturation by 10% instead.

 B99670

 B99670

FFFFFF

 9D7C57

 F2CCA4

 826340

 FFE8BF

 684B29

 FFFFDB

 4F3514

 FFFFF8

 371F00

 1F0900

 000000

 B99670

 B99670

 B98D5E

 B99F83

 B9844B

 B9A895

 B97B39

 B9B1A8

 B97326

 B9B9BA

 B96A14

 B9C2CD

 B96101

 B9CBDF

 B96000

 B9D4F2

 B9DDFF

 B9E6FF

Harmonies

Analogous

The Analogous color harmony consists of three colors that are next to each other on the color wheel.



C88F7E



B99670



A39E6E

Triad

The Triadic color harmony groups three colors that are evenly spaced from another and form a triangle on the color wheel.



B99670



59A9A5



AC93BF

Complementary

The Complementary color scheme is a pair of colors which are on the opposite of each other on the color wheel.



B99670



7093B9

Split Complementary

Split-complementary colors differ from the complementary color scheme. The scheme consists of three colors, the original color and two neighbors of the complement color.



8D9BC9



B99670



56A7BB

Square

The Square scheme is like the rectangle color scheme, but the four colors are evenly spaced on the color wheel.



B99670



6EA88D



6CA2C8



C28DAB

Rectangle

The Rectangle color scheme consists of four colors that form a rectangle on the color wheel.



B99670



92A274



6CA2C8



A295C3

Sweetspot

The Sweet Spot groups the original color and five complimentary colors.



B99670



F0E2D3



B97093



787067



F7F7F7



787878

Same Dimension

The Same Dimension uses a secret algorithm to generate beautiful new colors.



B99670



F0BA7F



B8B970



5C5753



9C5100



1C0F00

Inverse Universe

The Inverse Universe completely reimagines the original color for something new.



7093B9



7FB5F0



7170B9



53575C



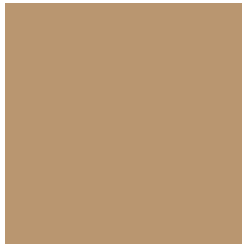
004B9C



000D1C

Previews

White Background



This preview shows how the Hex color B99670 looks on a white background.

Color Contrast Check

Large Text (above 18pt) WCAG AA × Fail

Any Text WCAG AA × Fail

Large Text (above 18pt) WCAG AAA × Fail

Any Text WCAG AAA × Fail

Black Background



Color Contrast Check

Large Text (above 18pt) WCAG AA ✓ Pass

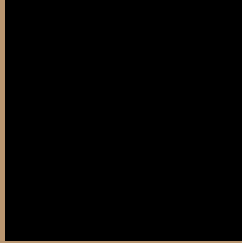
Any Text WCAG AA ✓ Pass

Large Text (above 18pt) WCAG AAA ✓ Pass

Any Text WCAG AAA ✓ Pass

If you want to check with other color combinations, try the [Color Contrast Checker](#).

Hex B99670 Background



This preview shows how black text looks on a background with the Hex color B99670.

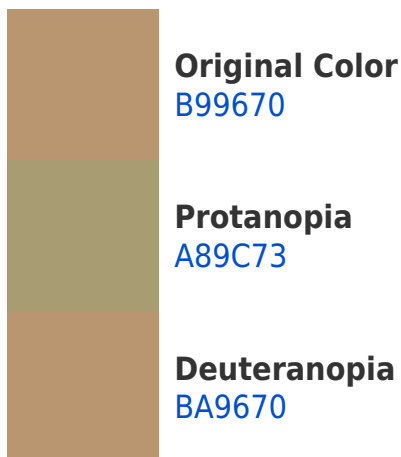


This preview shows how white text looks on a background with the Hex color B99670.

Color Blindness Simulation

Color vision deficiency is a very complex topic, and I could not describe the different causes any better than Wikipedia does, so if you want to learn more, you should check out their [article about color blindness](#).

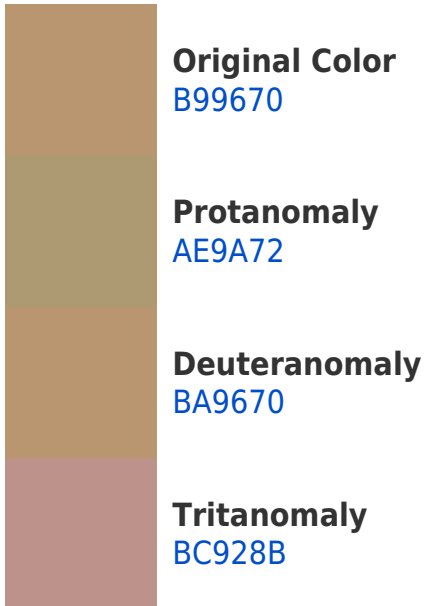
Dichromacy



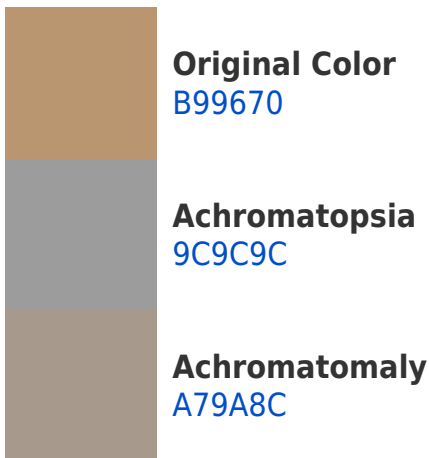


Tritanopia
BD909B

Trichromacy



Monochromacy



CSS Examples

Text

The CSS property to change the color of the text to Hex B99670 is called "color". The color property can be set on classes, ids or directly on the HTML element.

This example shows how text in the color #B99670 looks like.

```
.text, #text, p{  
    color:#B99670  
}
```

If you want to add a text shadow in that color use the text-shadow property, you can generate a text shadow directly with our [CSS Text Shadow Generator](#).

Here you see how black text with a 4 pixel #B99670 colored shadow looks like.

```
.shadow{ text-shadow: 4px 4px 2px #B99670
}
```

Border

The CSS property to change the border of an element to Hex B99670 is called "border". The border property can be set on classes, ids or directly on the HTML element.

This example shows the color as border, it can be applied via the CSS property "border" or "border-color".

```
.border, #border, table{ border:4px solid
#B99670 }
```

If only the border color should be changed use the property `border-color`.

```
.border{ border-color:#B99670 }
```

If you want to add a box shadow in that color use:

Here you see how a box with a 4 pixel #B99670 colored shadow looks like.

```
.boxshadow{ -moz-box-shadow:4px 4px 4px  
4px #B99670; -webkit-box-shadow:4px 4px  
4px 4px #B99670; box-shadow:4px 4px 4px  
4px #B99670 }
```

Background

The CSS property to change the background color of an element to Hex B99670 is called "background". The background property can be set on classes, ids or directly on the HTML element.

```
.background, #background, body{  
background:#B99670 }
```

If only the background color should be changed can be used:

```
.background{ background-color:#B99670 }
```

This example shows the color as background, it is applied via the CSS property "background".

To optimize and compress your CSS code, you can use our [online CSS compressor and optimizer](#) based on csstidy. If you want to create a linear or radial gradient as background or border, check our [CSS Gradient Generator](#).

Hey! You found this booklet interesting? Support Converting Colors with the new Membership Option!

The pro membership hides all ads, plus gives you double the colors in the color bucket, and more awesome pro features!

[Learn more, Memberships starting at \\$2.50/m!](#)

**Follow me
on Twitter!**

@ConvertingColor