

# Converting Colors

Hex(B99E99)

Have a look what the booklet for  
Hex(B99E99) contains.

<b>Hex(B99E99)</b> .....	3
<b><i>Conversions</i></b> .....	4
<b><i>Details</i></b> .....	6
<b><i>Harmonies</i></b> .....	11
<b><i>Previews</i></b> .....	23
<b><i>Color Blindness Simulation</i></b> .....	26
<b><i>CSS Examples</i></b> .....	29

# **Color**

**Hex(B99E99)**

# Conversions

## Conversions Part 1

Format	Color
Hex	B99E99
RGB	185, 158, 153
RGB Percent	73%, 62%, 60%
CMY	0.2745, 0.3804, 0.4000
CMYK	0.00, 0.15, 0.17, 0.27
HSL	9°, 19%, 66%
HSV	9°, 17%, 73%
XYZ	37.9842, 37.0679, 35.2898
YIQ	165.5030, 17.6970, 4.1690

# Conversions

## Conversions Part 2

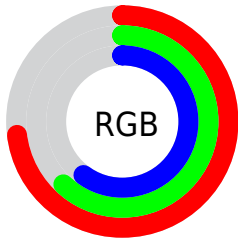
Format	Color
<a href="#">RYB</a>	<a href="#">185, 159, 153</a>
Decimal	<a href="#">12164761</a>
CIELab	<a href="#">67.33, 9.12, 6.29</a>
CIELCh	<a href="#">67, 11.077, 34.587</a>
Yxy	<a href="#">37.0679, 0.3442, 0.3359</a>
Android (android.graphics.Color)	<a href="#">4290354841 (0xFFB99E99)</a>
YUV	<a href="#">165.5030, -6.1640, 17.0989</a>
Hunter-Lab	<a href="#">60.8834, 4.8174, 8.2522</a>

# Details

The Hex color **B99E99** is a light color, and the websafe version is hex **CC9999**. A complement of this color would be **99B4B9**, and the grayscale version is **A6A6A6**.

A 20% lighter version of the original color is **F1D5CF**, and **846B66** is the 20% darker color. If you saturate the color by 10%, you get **B98E87**, and if you desaturate by 10%, it is **B9AEAB**.

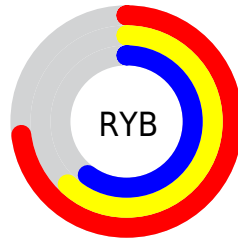
# Distribution



Red (73%)

Green (62%)

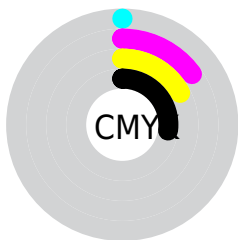
Blue (60%)



Red (73%)

Yellow (62%)

Blue (60%)

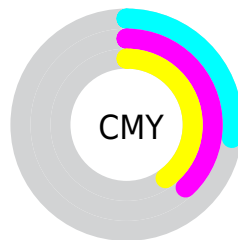


Cyan (0%)

Magenta (15%)

Yellow (17%)

Black (27%)



Cyan (27%)

Magenta (38%)

Yellow (40%)

# Brightness & Saturation Gradients

These gradients show how the Hex color B99E99 changes by changing the brightness by 10 percent. The first figure shows a shift by +10% for each color and the second figure -10%.

Similar to the brightness gradients but the following saturation gradients show a change of the Hex color B99E99 by changing the saturation by 10% instead.



 B99E99

 B99E99

FFFFFF

 9E847F

 F1D5CF

 846B66

 FFF1EC

 6A524E

 523B37

 3A2622

 24110C

 000000

 B99E99

 B99E99

 B98E87

 B9AEAB

 B97F74

 B9BDBE

 B96F62

 B9CDD1

 B9604F

 B9DCE3

 B9503D

 B9ECF5

 B9402A

 B9FCFF

 B93118

 B9FFFF

 B92105

 B91D00

# Harmonies

## Analogous

The Analogous color harmony consists of three colors that are next to each other on the color wheel.



B99DA3



B99E99



B4A092

# Triad

The Triadic color harmony groups three colors that are evenly spaced from another and form a triangle on the color wheel.



B99E99



94A99B



9BA4B8

# Complementary

The Complementary color scheme is a pair of colors which are on the opposite of each other on the color wheel.



B99E99



99B4B9

# Split Complementary

Split-complementary colors differ from the complementary color scheme. The scheme consists of three colors, the original color and two neighbors of the complement color.



90A7B6



B99E99



8DAAA5

# Square

The Square scheme is like the rectangle color scheme, but the four colors are evenly spaced on the color wheel.



B99E99



9FA793



8BA9AF



A8A1B4

# Rectangle

The Rectangle color scheme consists of four colors that form a rectangle on the color wheel.



B99E99



AEA390



8BA9AF



97A5B7

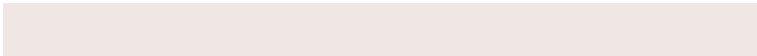


# Sweetspot

The Sweet Spot groups the original color and five complimentary colors.



B99E99



F0E6E4



B999B4



787271



F7F7F7



787878



# Same Dimension

The Same Dimension uses a secret algorithm to generate beautiful new colors.



B99E99



F0C5BD



B9AE99



5C5453



9C1800



1C0400



# Inverse Universe

The Inverse Universe completely reimagines the original color for something new.



99B4B9



BDE8F0



99A4B9



535A5C



00839C

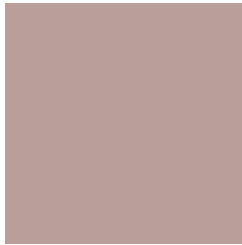


00181C



# Previews

## White Background



This preview shows how the Hex color B99E99 looks on a white background.

## Color Contrast Check

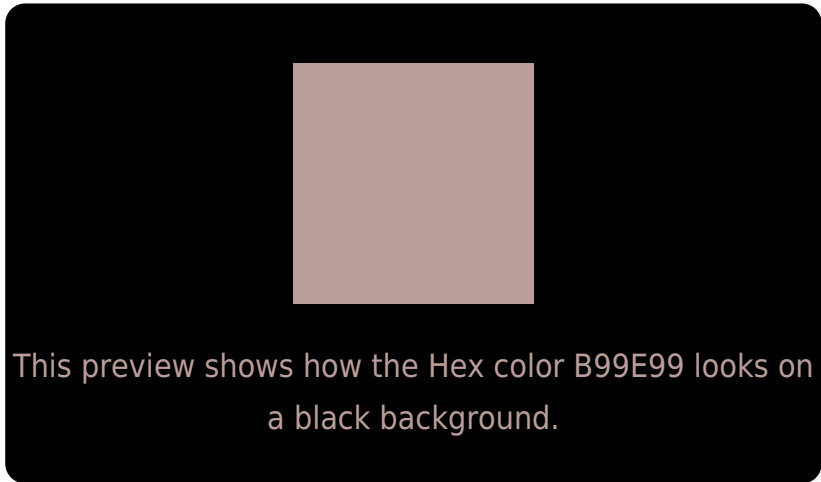
Large Text (above 18pt) WCAG AA × Fail

Any Text WCAG AA × Fail

Large Text (above 18pt) WCAG AAA × Fail

Any Text WCAG AAA × Fail

# Black Background



## Color Contrast Check

Large Text (above 18pt) WCAG AA ✓ Pass

Any Text WCAG AA ✓ Pass

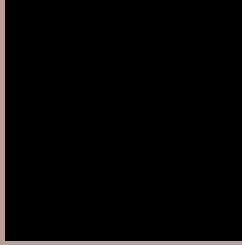
Large Text (above 18pt) WCAG AAA ✓ Pass

Any Text WCAG AAA ✓ Pass

If you want to check with other color combinations, try the [Color Contrast Checker](#).



## Hex B99E99 Background



This preview shows how black text looks on a background with the Hex color B99E99.



This preview shows how white text looks on a background with the Hex color B99E99.

# Color Blindness Simulation

Color vision deficiency is a very complex topic, and I could not describe the different causes any better than Wikipedia does, so if you want to learn more, you should check out their [article about color blindness](#).

## Dichromacy



**Original Color**  
B99E99

**Protanopia**  
A9A39C

**Deuteranopia**  
B89E99



**Tritanopia**  
BB9CA8

# Trichromacy



**Original Color**  
B99E99

**Protanomaly**  
AFA19B

**Deuteranomaly**  
B89E99

**Tritanomaly**  
BA9DA3

# Monochromacy



**Original Color**  
B99E99

**Achromatopsia**  
A6A6A6

**Achromatomaly**  
ADA3A1

# CSS Examples

## Text

The CSS property to change the color of the text to Hex B99E99 is called "color". The color property can be set on classes, ids or directly on the HTML element.

This example shows how text in the color #B99E99 looks like.

```
.text, #text, p{  
    color:#B99E99  
}
```

If you want to add a text shadow in that color use the text-shadow property, you can generate a text shadow directly with our [CSS Text Shadow Generator](#).

Here you see how black text with a 4 pixel #B99E99 colored shadow looks like.

```
.shadow{ text-shadow: 4px 4px 2px #B99E99
}
```

## Border

The CSS property to change the border of an element to Hex B99E99 is called "border". The border property can be set on classes, ids or directly on the HTML element.

This example shows the color as border, it can be applied via the CSS property "border" or "border-color".

```
.border, #border, table{ border:4px solid
#B99E99 }
```

If only the border color should be changed use the property `border-color`.

```
.border{ border-color:#B99E99 }
```

If you want to add a box shadow in that color use:

Here you see how a box with a 4 pixel #B99E99 colored shadow looks like.

```
.boxshadow{ -moz-box-shadow:4px 4px 4px  
4px #B99E99; -webkit-box-shadow:4px 4px  
4px 4px #B99E99; box-shadow:4px 4px 4px  
4px #B99E99 }
```

# Background

The CSS property to change the background color of an element to Hex B99E99 is called "background". The background property can be set on classes, ids or directly on the HTML element.

```
.background, #background, body{  
background:#B99E99 }
```

If only the background color should be changed can be used:

```
.background{ background-color:#B99E99 }
```

This example shows the color as background, it is applied via the CSS property "background".

To optimize and compress your CSS code, you can use our [online CSS compressor and optimizer](#) based on csstidy. If you want to create a linear or radial gradient as background or border, check our [CSS Gradient Generator](#).



Hey! You found this booklet interesting? Support Converting Colors with the new Membership Option!

The pro membership hides all ads, plus gives you double the colors in the color bucket, and more awesome pro features!

**[Learn more, Memberships starting at \\$2.50/m!](#)**

**Follow me  
on Twitter!**

@ConvertingColor