

Converting Colors

Hex(B99F99)

Have a look what the booklet for
Hex(B99F99) contains.

Hex(B99F99)	3
<i>Conversions</i>	4
<i>Details</i>	6
<i>Harmonies</i>	11
<i>Previews</i>	23
<i>Color Blindness Simulation</i>	26
<i>CSS Examples</i>	29

Color

Hex(B99F99)

Conversions

Conversions Part 1

Format	Color
Hex	B99F99
RGB	185, 159, 153
RGB Percent	73%, 62%, 60%
CMY	0.2745, 0.3765, 0.4000
CMYK	0.00, 0.14, 0.17, 0.27
HSL	11°, 19%, 66%
HSV	11°, 17%, 73%
XYZ	38.1555, 37.4105, 35.3469
YIQ	166.0900, 17.4220, 3.6460

Conversions

Conversions Part 2

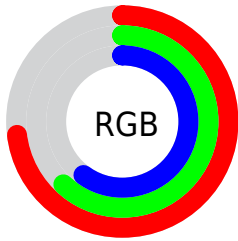
Format	Color
R_{YB}	185, 160, 153
Decimal	12165017
CIE _{Lab}	67.58, 8.57, 6.66
CIE _{LCh}	68, 10.850, 37.835
Yxy	37.4105, 0.3440, 0.3373
Android (android.graphics.Color)	4290355097 (0xFFB99F99)
YUV	166.0900, -6.4534, 16.5841
Hunter-Lab	61.1641, 4.3150, 8.5510

Details

The Hex color **B99F99** is a light color, and the websafe version is hex **CC9999**. A complement of this color would be **99B3B9**, and the grayscale version is **A6A6A6**.

A 20% lighter version of the original color is **F1D6CF**, and **846C66** is the 20% darker color. If you saturate the color by 10%, you get **B99087**, and if you desaturate by 10%, it is **B9AEAB**.

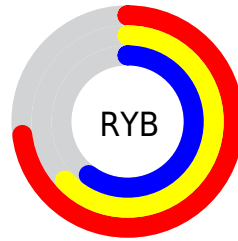
Distribution



Red (73%)

Green (62%)

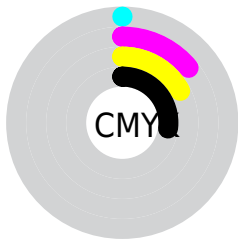
Blue (60%)



Red (73%)

Yellow (63%)

Blue (60%)

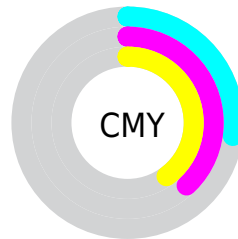


Cyan (0%)

Magenta (14%)

Yellow (17%)

Black (27%)



Cyan (27%)

Magenta (38%)

Yellow (40%)

Brightness & Saturation Gradients

These gradients show how the Hex color B99F99 changes by changing the brightness by 10 percent. The first figure shows a shift by +10% for each color and the second figure -10%.

Similar to the brightness gradients but the following saturation gradients show a change of the Hex color B99F99 by changing the saturation by 10% instead.

 B99F99

 B99F99

FFFFFF

 9E857F

 F1D6CF

 846C66

 FFF2EC

 6A534E

 523C37

 3A2622

 24120C

 000000

 B99F99

 B99F99

 B99087

 B9AEAB

 B98174

 B9BDBE

 B97262

 B9CCD1

 B9634F

 B9DBE3

 B9543D

 B9EAF5

 B9452A

 B9F9FF

 B93618

 B9FFFF

 B92705

 B92300

Harmonies

Analogous

The Analogous color harmony consists of three colors that are next to each other on the color wheel.



B99EA2



B99F99



B3A293

Triad

The Triadic color harmony groups three colors that are evenly spaced from another and form a triangle on the color wheel.



B99F99



94AA9D



9DA5B8

Complementary

The Complementary color scheme is a pair of colors which are on the opposite of each other on the color wheel.



B99F99



99B3B9

Split Complementary

Split-complementary colors differ from the complementary color scheme. The scheme consists of three colors, the original color and two neighbors of the complement color.



93A8B6



B99F99



8DAAA7

Square

The Square scheme is like the rectangle color scheme, but the four colors are evenly spaced on the color wheel.



B99F99



9FA895



8DAAB0



AAA1B4

Rectangle

The Rectangle color scheme consists of four colors that form a rectangle on the color wheel.



B99F99



ADA491



8DAAB0



99A6B8

Sweetspot

The Sweet Spot groups the original color and five complimentary colors.



B99F99



F0E6E4



B999B3



787271



F7F7F7



787878

Same Dimension

The Same Dimension uses a secret algorithm to generate beautiful new colors.



B99F99



F0C7BD



B9AF99



5C5453



9C1D00



1C0500

Inverse Universe

The Inverse Universe completely reimagines the original color for something new.



99B3B9



BDE6F0



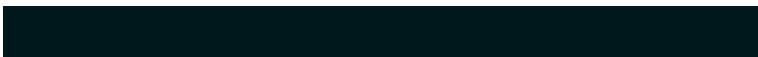
99A3B9



535A5C



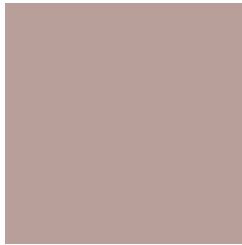
007E9C



00171C

Previews

White Background



This preview shows how the Hex color B99F99 looks on a white background.

Color Contrast Check

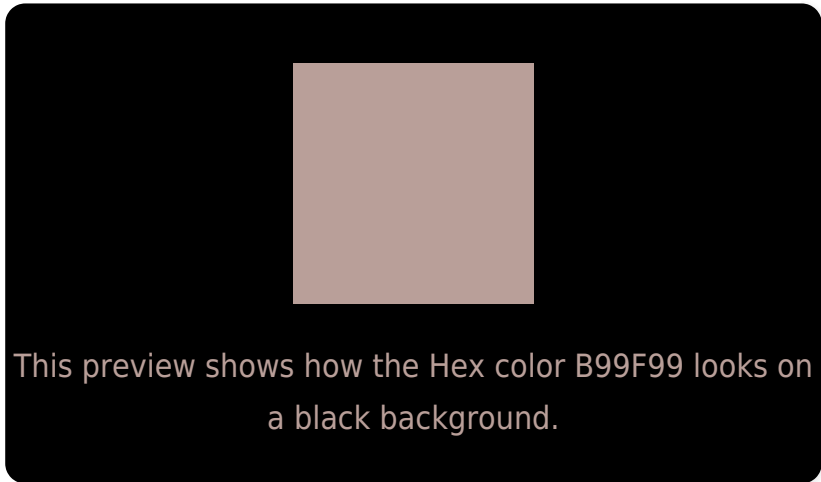
Large Text (above 18pt) WCAG AA × Fail

Any Text WCAG AA × Fail

Large Text (above 18pt) WCAG AAA × Fail

Any Text WCAG AAA × Fail

Black Background



Color Contrast Check

Large Text (above 18pt) WCAG AA ✓ Pass

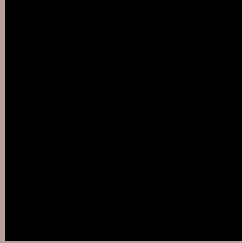
Any Text WCAG AA ✓ Pass

Large Text (above 18pt) WCAG AAA ✓ Pass

Any Text WCAG AAA ✓ Pass

If you want to check with other color combinations, try the [Color Contrast Checker](#).

Hex B99F99 Background



This preview shows how black text looks on a background with the Hex color B99F99.

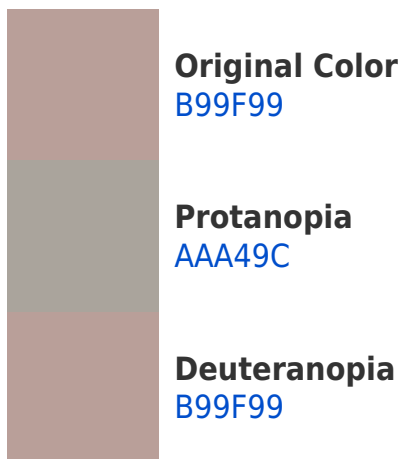


This preview shows how white text looks on a background with the Hex color B99F99.

Color Blindness Simulation

Color vision deficiency is a very complex topic, and I could not describe the different causes any better than Wikipedia does, so if you want to learn more, you should check out their [article about color blindness](#).

Dichromacy





Tritanopia
BB9DA9

Trichromacy



Original Color
B99F99

Protanomaly
AFA29B

Deuteranomaly
B99F99

Tritanomaly
BA9EA3

Monochromacy



Original Color
B99F99

Achromatopsia
A6A6A6

Achromatomaly
ADA3A1

CSS Examples

Text

The CSS property to change the color of the text to Hex B99F99 is called "color". The color property can be set on classes, ids or directly on the HTML element.

This example shows how text in the color #B99F99 looks like.

```
.text, #text, p{  
    color:#B99F99  
}
```

If you want to add a text shadow in that color use the text-shadow property, you can generate a text shadow directly with our [CSS Text Shadow Generator](#).

Here you see how black text with a 4 pixel #B99F99 colored shadow looks like.

```
.shadow{ text-shadow: 4px 4px 2px #B99F99
}
```

Border

The CSS property to change the border of an element to Hex B99F99 is called "border". The border property can be set on classes, ids or directly on the HTML element.

This example shows the color as border, it can be applied via the CSS property "border" or "border-color".

```
.border, #border, table{ border:4px solid
#B99F99 }
```

If only the border color should be changed use the property border-color.

```
.border{ border-color:#B99F99 }
```

If you want to add a box shadow in that color use:

Here you see how a box with a 4 pixel #B99F99 colored shadow looks like.

```
.boxshadow{ -moz-box-shadow:4px 4px 4px  
4px #B99F99; -webkit-box-shadow:4px 4px  
4px 4px #B99F99; box-shadow:4px 4px 4px  
4px #B99F99 }
```

Background

The CSS property to change the background color of an element to Hex B99F99 is called "background". The background property can be set on classes, ids or directly on the HTML element.

```
.background, #background, body{  
background:#B99F99 }
```

If only the background color should be changed can be used:

```
.background{ background-color:#B99F99 }
```

This example shows the color as background, it is applied via the CSS property "background".

To optimize and compress your CSS code, you can use our [online CSS compressor and optimizer](#) based on csstidy. If you want to create a linear or radial gradient as background or border, check our [CSS Gradient Generator](#).

Hey! You found this booklet interesting? Support Converting Colors with the new Membership Option!

The pro membership hides all ads, plus gives you double the colors in the color bucket, and more awesome pro features!

[Learn more, Memberships starting at \\$2.50/m!](#)

**Follow me
on Twitter!**

@ConvertingColor