

# Converting Colors

Hex(B9A539)

Have a look what the booklet for  
Hex(B9A539) contains.

<b>Hex(B9A539)</b> .....	3
<b><i>Conversions</i></b> .....	4
<b><i>Details</i></b> .....	6
<b><i>Harmonies</i></b> .....	11
<b><i>Previews</i></b> .....	23
<b><i>Color Blindness Simulation</i></b> .....	26
<b><i>CSS Examples</i></b> .....	29

**Color**

**Hex(B9A539)**

# Conversions

## Conversions Part 1

Format	Color
Hex	B9A539
RGB	185, 165, 57
RGB Percent	73%, 65%, 22%
CMY	0.2745, 0.3529, 0.7765
CMYK	0.00, 0.11, 0.69, 0.27
HSL	51°, 53%, 47%
HSV	51°, 69%, 73%
XYZ	34.2012, 37.5200, 9.3104
YIQ	158.6680, 46.5880, -29.3480

# Conversions

## Conversions Part 2

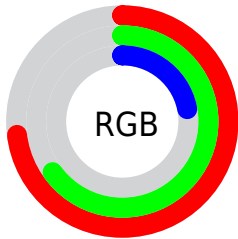
<b>Format</b>	<b>Color</b>
<b>RYB</b>	81, 185, 57
Decimal	12166457
CIELab	67.67, -4.99, 56.14
CIELCh	68, 56.361, 95.081
Yxy	37.5200, 0.4221, 0.4630
Android (android.graphics.Color)	4290356537 (0xFFB9A539)
YUV	158.6680, -50.1223, 23.0932
Hunter-Lab	61.2535, -7.5273, 33.8656

# Details

The Hex color **B9A539** is a dark color, and the websafe version is hex **999933**. A complement of this color would be **394DB9**, and the grayscale version is **9F9F9F**.

A 20% lighter version of the original color is **F4DC6E**, and **807200** is the 20% darker color. If you saturate the color by 10%, you get **B9A227**, and if you desaturate by 10%, it is **B9A84B**.

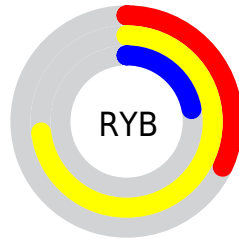
# Distribution



Red (73%)

Green (65%)

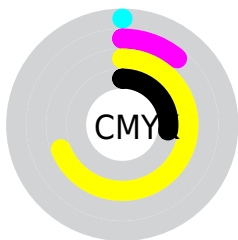
Blue (22%)



Red (32%)

Yellow (73%)

Blue (22%)

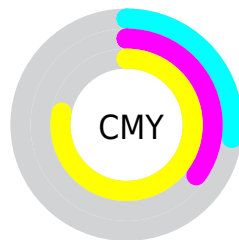


Cyan (0%)

Magenta (11%)

Yellow (69%)

Black (27%)



Cyan (27%)

Magenta (35%)

Yellow (78%)

# Brightness & Saturation Gradients

These gradients show how the Hex color B9A539 changes by changing the brightness by 10 percent. The first figure shows a shift by +10% for each color and the second figure -10%.

Similar to the brightness gradients but the following saturation gradients show a change of the Hex color B9A539 by changing the saturation by 10% instead.



 B9A539

 B9A539

FFFFFF

 9C8B1C

 F4DC6E

 807200

 FFF889

 655900

 FFFFA4

 4B4200

 FFFFC0

 312C00

 FFFFDD

 181800

 FFFFFA

 000000

 B9A539

 B9A539

 B9A227

 B9A84B

 B99F14

 B9AB5E

 B99C01

 B9AE71

 B99C00

 B9B183

 B9B395

 B9B6A8

 B9B9BB

 B9BCCD

 B9BFDf

# Harmonies

## Analogous

The Analogous color harmony consists of three colors that are next to each other on the color wheel.



E39347



B9A539



84B34D

# Triad

The Triadic color harmony groups three colors that are evenly spaced from another and form a triangle on the color wheel.



B9A539



00BCDE



EA80D1

# Complementary

The Complementary color scheme is a pair of colors which are on the opposite of each other on the color wheel.



B9A539



394DB9

# Split Complementary

Split-complementary colors differ from the complementary color scheme. The scheme consists of three colors, the original color and two neighbors of the complement color.



B394F8



B9A539



00B5FF

# Square

The Square scheme is like the rectangle color scheme, but the four colors are evenly spaced on the color wheel.



B9A539



00BEAC



51A8FF



FF779E

# Rectangle

The Rectangle color scheme consists of four colors that form a rectangle on the color wheel.



B9A539



56B968



51A8FF



DB86E0



# Sweetspot

The Sweet Spot groups the original color and five complimentary colors.



B9A539



F0E8BD



B9394E



78735A



F7F7F7



787878



# Same Dimension

The Same Dimension uses a secret algorithm to generate beautiful new colors.



B9A539



F0D129



8EB939



5C5A53



9C8300



1C1800



# Inverse Universe

The Inverse Universe completely reimagines the original color for something new.



394DB9



2948F0



6439B9



53545C



00189C



00041C



# Previews

## White Background



This preview shows how the Hex color B9A539 looks on a white background.

## Color Contrast Check

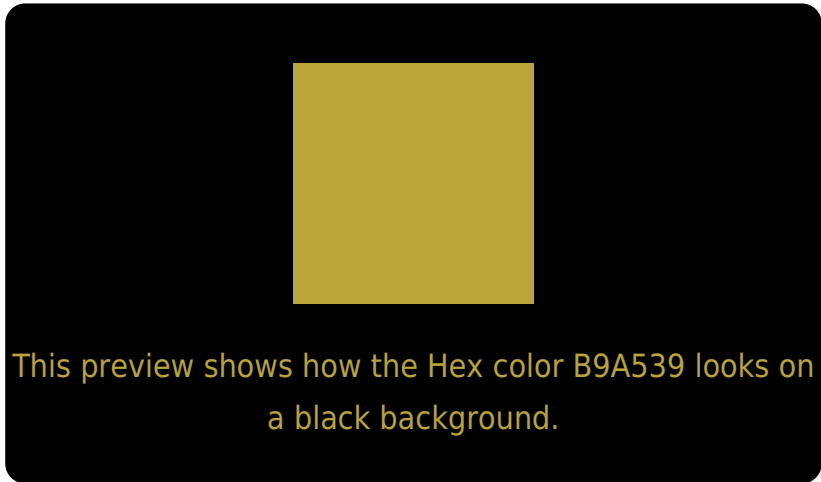
Large Text (above 18pt) WCAG AA × Fail

Any Text WCAG AA × Fail

Large Text (above 18pt) WCAG AAA × Fail

Any Text WCAG AAA × Fail

# Black Background



## Color Contrast Check

Large Text (above 18pt) WCAG AA ✓ Pass

Any Text WCAG AA ✓ Pass

Large Text (above 18pt) WCAG AAA ✓ Pass

Any Text WCAG AAA ✓ Pass

If you want to check with other color combinations, try the [Color Contrast Checker](#).



## Hex B9A539 Background



This preview shows how black text looks on a background with the Hex color B9A539.



This preview shows how white text looks on a background with the Hex color B9A539.

# Color Blindness Simulation

Color vision deficiency is a very complex topic, and I could not describe the different causes any better than Wikipedia does, so if you want to learn more, you should check out their [article about color blindness](#).

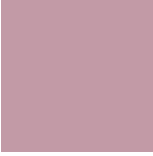
## Dichromacy



**Original Color**  
B9A539

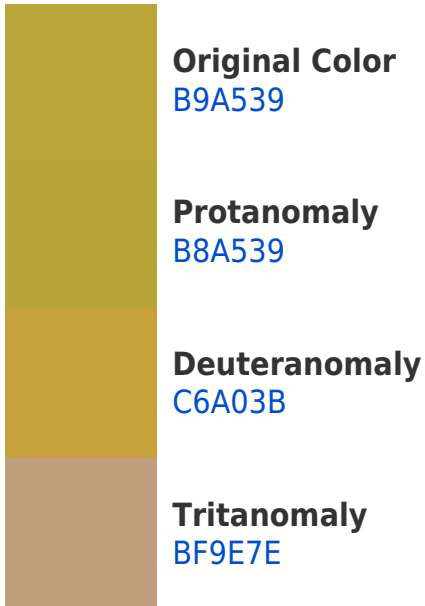
**Protanopia**  
B8A539

**Deuteranopia**  
CE9D3C

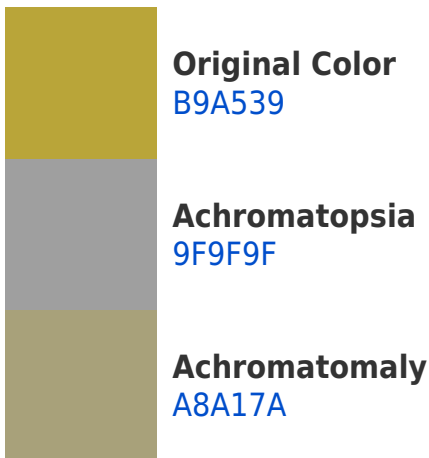


**Tritanopia**  
C29AA6

# Trichromacy



# Monochromacy



# CSS Examples

## Text

The CSS property to change the color of the text to Hex B9A539 is called "color". The color property can be set on classes, ids or directly on the HTML element.

This example shows how text in the color #B9A539 looks like.

```
.text, #text, p{  
    color:#B9A539  
}
```

If you want to add a text shadow in that color use the text-shadow property, you can generate a text shadow directly with our [CSS Text Shadow Generator](#).

Here you see how black text with a 4 pixel #B9A539 colored shadow looks like.

```
.shadow{ text-shadow: 4px 4px 2px #B9A539
}
```

## Border

The CSS property to change the border of an element to Hex B9A539 is called "border". The border property can be set on classes, ids or directly on the HTML element.

This example shows the color as border, it can be applied via the CSS property "border" or "border-color".

```
.border, #border, table{ border:4px solid
#B9A539 }
```

If only the border color should be changed use the property `border-color`.

```
.border{ border-color:#B9A539 }
```

If you want to add a box shadow in that color use:

Here you see how a box with a 4 pixel #B9A539 colored shadow looks like.

```
.boxshadow{ -moz-box-shadow:4px 4px 4px  
4px #B9A539; -webkit-box-shadow:4px 4px  
4px 4px #B9A539; box-shadow:4px 4px 4px  
4px #B9A539 }
```

# Background

The CSS property to change the background color of an element to Hex B9A539 is called "background". The background property can be set on classes, ids or directly on the HTML element.

```
.background, #background, body{  
background:#B9A539 }
```

If only the background color should be changed can be used:

```
.background{ background-color:#B9A539 }
```

This example shows the color as background, it is applied via the CSS property "background".

To optimize and compress your CSS code, you can use our [online CSS compressor and optimizer](#) based on csstidy. If you want to create a linear or radial gradient as background or border, check our [CSS Gradient Generator](#).



Hey! You found this booklet interesting? Support Converting Colors with the new Membership Option!

The pro membership hides all ads, plus gives you double the colors in the color bucket, and more awesome pro features!

**[Learn more, Memberships starting at \\$2.50/m!](#)**

**Follow me  
on Twitter!**

@ConvertingColor