

# Converting Colors

Hex(BA7A4F)

Have a look what the booklet for  
Hex(BA7A4F) contains.

<b>Hex(BA7A4F)</b> .....	3
<b><i>Conversions</i></b> .....	4
<b><i>Details</i></b> .....	6
<b><i>Harmonies</i></b> .....	11
<b><i>Previews</i></b> .....	23
<b><i>Color Blindness Simulation</i></b> .....	26
<b><i>CSS Examples</i></b> .....	29

# Color

Hex(BA7A4F)

# Conversions

## Conversions Part 1

<b>Format</b>	<b>Color</b>
Hex	BA7A4F
RGB	186, 122, 79
RGB Percent	73%, 48%, 31%
CMY	0.2706, 0.5216, 0.6902
CMYK	0.00, 0.34, 0.58, 0.27
HSL	24°, 44%, 52%
HSV	24°, 58%, 73%
XYZ	28.6205, 24.9227, 10.6992
YIQ	136.2340, 51.9470, 0.1950

# Conversions

## Conversions Part 2

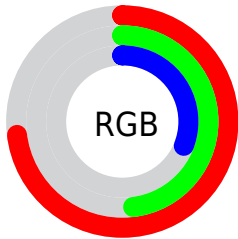
<b>Format</b>	<b>Color</b>
<b>RYB</b>	186, 151, 79
Decimal	12221007
CIELab	57.00, 20.48, 33.57
CIELCh	57, 39.323, 58.618
Yxy	24.9227, 0.4455, 0.3879
Android (android.graphics.Color)	4290411087 (0xFFBA7A4F)
YUV	136.2340, -28.2164, 43.6448
Hunter-Lab	49.9226, 14.9690, 22.2390

# Details

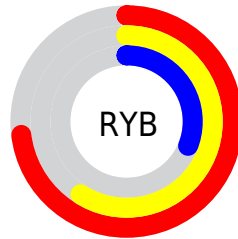
The Hex color **BA7A4F** is a dark color, and the websafe version is hex **996633**. A complement of this color would be **4F8FBA**, and the grayscale version is **888888**.

A 20% lighter version of the original color is **F5AF81**, and **814921** is the 20% darker color. If you saturate the color by 10%, you get **BA6F3C**, and if you desaturate by 10%, it is **BA8562**.

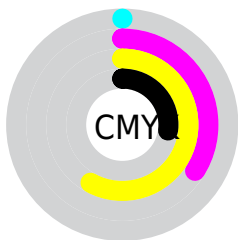
# Distribution



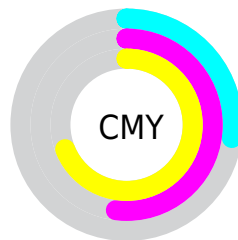
- Red (73%)
- Green (48%)
- Blue (31%)



- Red (73%)
- Yellow (59%)
- Blue (31%)



- Cyan (0%)
- Magenta (34%)
- Yellow (58%)
- Black (27%)



- Cyan (27%)
- Magenta (52%)
- Yellow (69%)

# Brightness & Saturation Gradients

These gradients show how the Hex color BA7A4F changes by changing the brightness by 10 percent. The first figure shows a shift by +10% for each color and the second figure -10%.

Similar to the brightness gradients but the following saturation gradients show a change of the Hex color BA7A4F by changing the saturation by 10% instead.



 BA7A4F

 BA7A4F

FFFFFF

 9D6137

 F5AF81

 814921

 FFCA9B

 66320A

 FFE6B6

 4B1C00

 FFFFD2

 310600

 FFFFEE

 120000

 000000

 BA7A4F

 BA7A4F

 BA6F3C

 BA8562

 BA642A

 BA9074

 BA5917

 BA9B87

 BA4D05

 BAA799

 BA4B00

 BAB2AC

 BABDBF

 BAC8D1

 BAD3E4

 BADEF6

# Harmonies

## Analogous

The Analogous color harmony consists of three colors that are next to each other on the color wheel.



C9706A



BA7A4F



9F8643

# Triad

The Triadic color harmony groups three colors that are evenly spaced from another and form a triangle on the color wheel.



BA7A4F



009A86



8980C5

# Complementary

The Complementary color scheme is a pair of colors which are on the opposite of each other on the color wheel.



BA7A4F



4F8FBA

# Split Complementary

Split-complementary colors differ from the complementary color scheme. The scheme consists of three colors, the original color and two neighbors of the complement color.



4C8DCD



BA7A4F



009AA9

# Square

The Square scheme is like the rectangle color scheme, but the four colors are evenly spaced on the color wheel.



BA7A4F



529764



0096C3



B274AD

# Rectangle

The Rectangle color scheme consists of four colors that form a rectangle on the color wheel.



BA7A4F



898D46



0096C3



7785CA



# Sweetspot

The Sweet Spot groups the original color and five complimentary colors.



BA7A4F



F2DAC9



BA4F8F



7A6C62



FAFAFA



7A7A7A



# Same Dimension

The Same Dimension uses a secret algorithm to generate beautiful new colors.



BA7A4F



F28E4B



BAAF4F



5C5653



9C3F00



1C0B00



# Inverse Universe

The Inverse Universe completely reimagines the original color for something new.



4F8FBA



4BAFF2



4F5ABA



53585C



005D9C

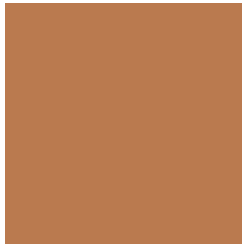


00111C



# Previews

## White Background



This preview shows how the Hex color BA7A4F looks on a white background.

## Color Contrast Check

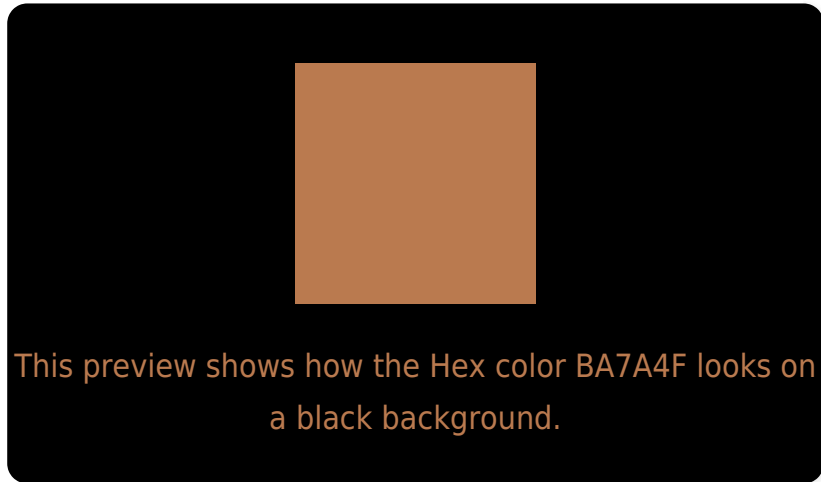
Large Text (above 18pt) WCAG AA ✓ Pass

Any Text WCAG AA ✗ Fail

Large Text (above 18pt) WCAG AAA ✗ Fail

Any Text WCAG AAA ✗ Fail

# Black Background



## Color Contrast Check

Large Text (above 18pt) WCAG AA ✓ Pass

Any Text WCAG AA ✓ Pass

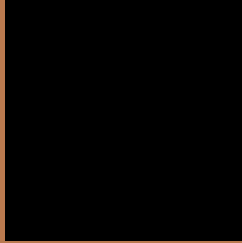
Large Text (above 18pt) WCAG AAA ✓ Pass

Any Text WCAG AAA × Fail

If you want to check with other color combinations, try the [Color Contrast Checker](#).



## Hex BA7A4F Background



This preview shows how black text looks on a background with the Hex color BA7A4F.



This preview shows how white text looks on a background with the Hex color BA7A4F.

# Color Blindness Simulation

Color vision deficiency is a very complex topic, and I could not describe the different causes any better than Wikipedia does, so if you want to learn more, you should check out their [article about color blindness](#).

## Dichromacy



**Original Color**  
BA7A4F

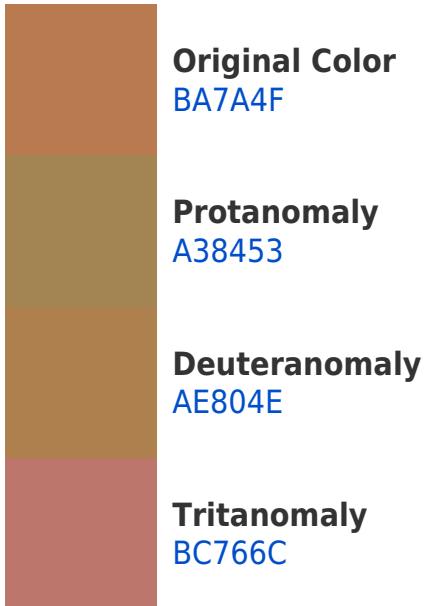
**Protanopia**  
968955

**Deuteranopia**  
A7834D

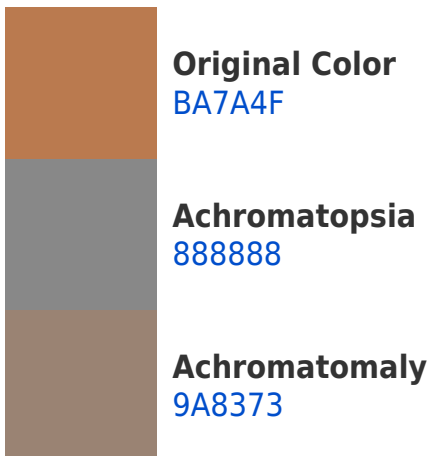


**Tritanopia**  
BD747D

# Trichromacy



# Monochromacy



# CSS Examples

## Text

The CSS property to change the color of the text to Hex BA7A4F is called "color". The color property can be set on classes, ids or directly on the HTML element.

This example shows how text in the color #BA7A4F looks like.

```
.text, #text, p{  
  color:#BA7A4F  
}
```

If you want to add a text shadow in that color use the text-shadow property, you can generate a text shadow directly with our [CSS Text Shadow Generator](#).

Here you see how black text with a 4 pixel #BA7A4F colored shadow looks like.

```
.shadow{ text-shadow: 4px 4px 2px #BA7A4F
}
```

## Border

The CSS property to change the border of an element to Hex BA7A4F is called "border". The border property can be set on classes, ids or directly on the HTML element.

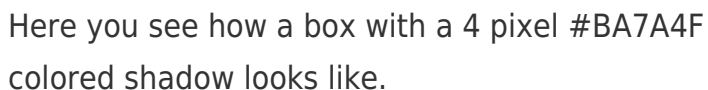
This example shows the color as border, it can be applied via the CSS property "border" or "border-color".

```
.border, #border, table{ border:4px solid
#BA7A4F }
```

If only the border color should be changed use the property `border-color`.

```
.border{ border-color:#BA7A4F }
```

If you want to add a box shadow in that color use:



Here you see how a box with a 4 pixel #BA7A4F colored shadow looks like.

```
.boxshadow{ -moz-box-shadow:4px 4px 4px  
4px #BA7A4F; -webkit-box-shadow:4px 4px  
4px 4px #BA7A4F; box-shadow:4px 4px 4px  
4px #BA7A4F }
```

# Background

The CSS property to change the background color of an element to Hex BA7A4F is called "background". The background property can be set on classes, ids or directly on the HTML element.

```
.background, #background, body{  
background:#BA7A4F }
```

If only the background color should be changed can be used:

```
.background{ background-color:#BA7A4F }
```

This example shows the color as background, it is applied via the CSS property "background".

To optimize and compress your CSS code, you can use our [online CSS compressor and optimizer](#) based on csstidy. If you want to create a linear or radial gradient as background or border, check our [CSS Gradient Generator](#).



Hey! You found this booklet interesting? Support Converting Colors with the new Membership Option!

The pro membership hides all ads, plus gives you double the colors in the color bucket, and more awesome pro features!

**[Learn more, Memberships starting at \\$2.50/m!](#)**

**Follow me  
on Twitter!**

@ConvertingColor