

# Converting Colors

Hex(BA8D91)

Have a look what the booklet for  
Hex(BA8D91) contains.

<b>Hex(BA8D91)</b> .....	3
<i><b>Conversions</b></i> .....	4
<i><b>Details</b></i> .....	6
<i><b>Harmonies</b></i> .....	11
<i><b>Previews</b></i> .....	23
<i><b>Color Blindness Simulation</b></i> .....	26
<i><b>CSS Examples</b></i> .....	29

# **Color**

**Hex(BA8D91)**

# Conversions

## Conversions Part 1

Format	Color
Hex	BA8D91
RGB	186, 141, 145
RGB Percent	73%, 55%, 57%
CMY	0.2706, 0.4471, 0.4314
CMYK	0.00, 0.24, 0.22, 0.27
HSL	355°, 25%, 64%
HSV	355°, 24%, 73%
XYZ	34.8854, 31.5332, 31.0359
YIQ	154.9110, 25.5360, 10.7840

# Conversions

## Conversions Part 2

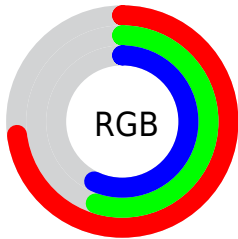
Format	Color
R <sub>Y</sub> B	186, 141, 145
Decimal	12225937
CIE Lab	62.96, 17.67, 4.51
CIE LCh	63, 18.232, 14.311
Yxy	31.5332, 0.3580, 0.3236
Android (android.graphics.Color)	4290416017 (0xFFBA8D91)
YUV	154.9110, -4.8861, 27.2651
Hunter-Lab	56.1544, 12.6212, 6.5392

# Details

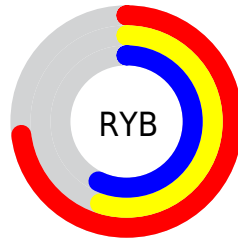
The Hex color **BA8D91** is a light color, and the websafe version is hex **CC9999**. A complement of this color would be **8DBAB6**, and the grayscale version is **9B9B9B**.

A 20% lighter version of the original color is **F3C3C7**, and **845B5F** is the 20% darker color. If you saturate the color by 10%, you get **BA7A80**, and if you desaturate by 10%, it is **BAA0A2**.

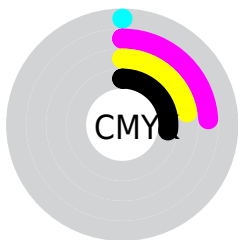
# Distribution



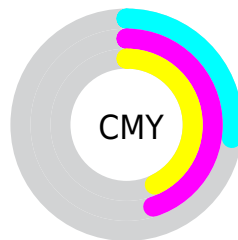
- Red (73%)
- Green (55%)
- Blue (57%)



- Red (73%)
- Yellow (55%)
- Blue (57%)



- Cyan (0%)
- Magenta (24%)
- Yellow (22%)
- Black (27%)



- Cyan (27%)
- Magenta (45%)
- Yellow (43%)

# Brightness & Saturation Gradients

These gradients show how the Hex color BA8D91 changes by changing the brightness by 10 percent. The first figure shows a shift by +10% for each color and the second figure -10%.

Similar to the brightness gradients but the following saturation gradients show a change of the Hex color BA8D91 by changing the saturation by 10% instead.



 BA8D91

 BA8D91

FFFFFF

 9F7377

 F3C3C7

 845B5F

 FFDFE3

 6A4347

 FFFCFF

 512C31

 39171C

 250001

 000000

 BA8D91

 BA8D91

 BA7A80

 BAA0A2

 BA686F

 BAB2B3

 BA555E

 BAC5C4

 BA434D

 BAD7D5

 BA303C

 BAEAE6

 BA1D2B

 BAFDF7

 BA0B1A

 BAFFFF

 BA0011

# Harmonies

## Analogous

The Analogous color harmony consists of three colors that are next to each other on the color wheel.



B48EA2



BA8D91



B79082

# Triad

The Triadic color harmony groups three colors that are evenly spaced from another and form a triangle on the color wheel.



BA8D91



8A9E81



7B9CB7

# Complementary

The Complementary color scheme is a pair of colors which are on the opposite of each other on the color wheel.



BA8D91



8DBAB6

# Split Complementary

Split-complementary colors differ from the complementary color scheme. The scheme consists of three colors, the original color and two neighbors of the complement color.



6EA0AE



BA8D91



79A18F

# Square

The Square scheme is like the rectangle color scheme, but the four colors are evenly spaced on the color wheel.



BA8D91



9D9A79



6DA2A0



9097B7

# Rectangle

The Rectangle color scheme consists of four colors that form a rectangle on the color wheel.



BA8D91



B1937C



6DA2A0



759EB5



# Sweetspot

The Sweet Spot groups the original color and five complimentary colors.



BA8D91



F2E1E3



B68DBA



7A7171



FAFAFA



7A7A7A



# Same Dimension

The Same Dimension uses a secret algorithm to generate beautiful new colors.



BA8D91



F2ACB2



BA9F8D



5C5353



9C000E



1C0002



# Inverse Universe

The Inverse Universe completely reimagines the original color for something new.



BA8D91



F2ACB2



8DA8BA



5C5353



9C000E

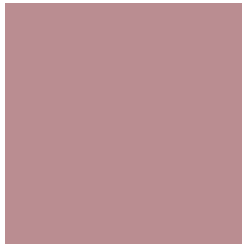


1C0002



# Previews

## White Background



This preview shows how the Hex color BA8D91 looks on a white background.

## Color Contrast Check

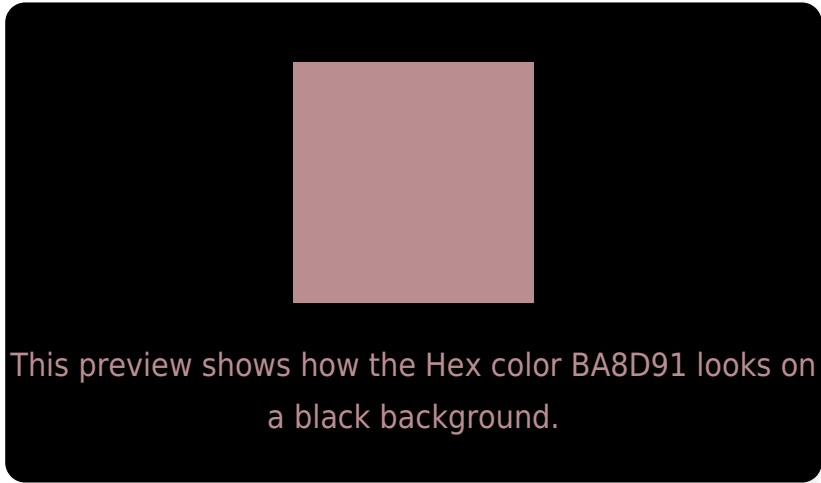
Large Text (above 18pt) WCAG AA × Fail

Any Text WCAG AA × Fail

Large Text (above 18pt) WCAG AAA × Fail

Any Text WCAG AAA × Fail

# Black Background



## Color Contrast Check

Large Text (above 18pt) WCAG AA ✓ Pass

Any Text WCAG AA ✓ Pass

Large Text (above 18pt) WCAG AAA ✓ Pass

Any Text WCAG AAA ✓ Pass

If you want to check with other color combinations, try the [Color Contrast Checker](#).



## Hex BA8D91 Background



This preview shows how black text looks on a background with the Hex color BA8D91.



This preview shows how white text looks on a background with the Hex color BA8D91.

# Color Blindness Simulation

Color vision deficiency is a very complex topic, and I could not describe the different causes any better than Wikipedia does, so if you want to learn more, you should check out their [article about color blindness](#).

## Dichromacy





**Tritanopia**  
BB8C97

# Trichromacy



**Original Color**  
BA8D91

**Protanomaly**  
A79495

**Deuteranomaly**  
B09190

**Tritanomaly**  
BB8C95

# Monochromacy



**Original Color**  
BA8D91

**Achromatopsia**  
9B9B9B

**Achromatomaly**  
A69697

# CSS Examples

## Text

The CSS property to change the color of the text to Hex BA8D91 is called "color". The color property can be set on classes, ids or directly on the HTML element.

This example shows how text in the color #BA8D91 looks like.

```
.text, #text, p{  
    color:#BA8D91  
}
```

If you want to add a text shadow in that color use the text-shadow property, you can generate a text shadow directly with our [CSS Text Shadow Generator](#).

Here you see how black text with a 4 pixel #BA8D91 colored shadow looks like.

```
.shadow{ text-shadow: 4px 4px 2px #BA8D91
}
```

## Border

The CSS property to change the border of an element to Hex BA8D91 is called "border". The border property can be set on classes, ids or directly on the HTML element.

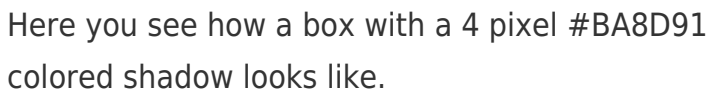
This example shows the color as border, it can be applied via the CSS property "border" or "border-color".

```
.border, #border, table{ border:4px solid
#BA8D91 }
```

If only the border color should be changed use the property `border-color`.

```
.border{ border-color:#BA8D91 }
```

If you want to add a box shadow in that color use:



Here you see how a box with a 4 pixel #BA8D91 colored shadow looks like.

```
.boxshadow{ -moz-box-shadow:4px 4px 4px  
4px #BA8D91; -webkit-box-shadow:4px 4px  
4px 4px #BA8D91; box-shadow:4px 4px 4px  
4px #BA8D91 }
```

# Background

The CSS property to change the background color of an element to Hex BA8D91 is called "background". The background property can be set on classes, ids or directly on the HTML element.

```
.background, #background, body{  
background:#BA8D91 }
```

If only the background color should be changed can be used:

```
.background{ background-color:#BA8D91 }
```

This example shows the color as background, it is applied via the CSS property "background".

To optimize and compress your CSS code, you can use our [online CSS compressor and optimizer](#) based on csstidy. If you want to create a linear or radial gradient as background or border, check our [CSS Gradient Generator](#).



Hey! You found this booklet interesting? Support Converting Colors with the new Membership Option!

The pro membership hides all ads, plus gives you double the colors in the color bucket, and more awesome pro features!

**[Learn more, Memberships starting at \\$2.50/m!](#)**

**Follow me  
on Twitter!**

@ConvertingColor