

# Converting Colors

Hex(BA928F)

Have a look what the booklet for  
Hex(BA928F) contains.

<b>Hex(BA928F)</b> .....	3
<i><b>Conversions</b></i> .....	4
<i><b>Details</b></i> .....	6
<i><b>Harmonies</b></i> .....	11
<i><b>Previews</b></i> .....	23
<i><b>Color Blindness Simulation</b></i> .....	26
<i><b>CSS Examples</b></i> .....	29

# **Color**

**Hex(BA928F)**

# Conversions

## Conversions Part 1

Format	Color
Hex	BA928F
RGB	186, 146, 143
RGB Percent	73%, 57%, 56%
CMY	0.2706, 0.4275, 0.4392
CMYK	0.00, 0.22, 0.23, 0.27
HSL	4°, 24%, 65%
HSV	4°, 23%, 73%
XYZ	35.4865, 32.9800, 30.4820
YIQ	157.6180, 24.8030, 7.5470

# Conversions

## Conversions Part 2

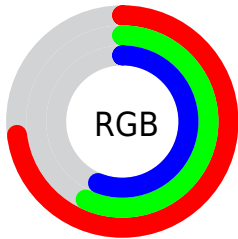
<b>Format</b>	<b>Color</b>
<b>RYB</b>	186, 146, 143
Decimal	12227215
CIELab	64.14, 14.58, 7.35
CIELCh	64, 16.329, 26.733
Yxy	32.9800, 0.3586, 0.3333
Android (android.graphics.Color)	4290417295 (0xFFBA928F)
YUV	157.6180, -7.2067, 24.8910
Hunter-Lab	57.4283, 9.8007, 8.7295

# Details

The Hex color **BA928F** is a light color, and the websafe version is hex **CC9999**. A complement of this color would be **8FB7BA**, and the grayscale version is **9E9E9E**.

A 20% lighter version of the original color is **F3C8C5**, and **845F5D** is the 20% darker color. If you saturate the color by 10%, you get **BA817C**, and if you desaturate by 10%, it is **BAA3A2**.

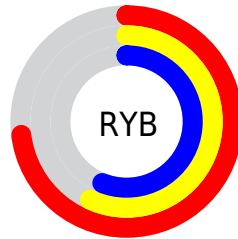
# Distribution



Red (73%)

Green (57%)

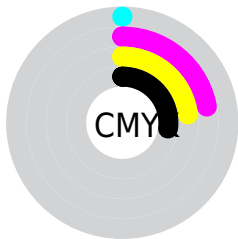
Blue (56%)



Red (73%)

Yellow (57%)

Blue (56%)

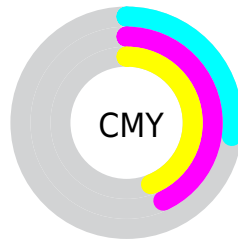


Cyan (0%)

Magenta (22%)

Yellow (23%)

Black (27%)



Cyan (27%)

Magenta (43%)

Yellow (44%)

# Brightness & Saturation Gradients

These gradients show how the Hex color BA928F changes by changing the brightness by 10 percent. The first figure shows a shift by +10% for each color and the second figure -10%.

Similar to the brightness gradients but the following saturation gradients show a change of the Hex color BA928F by changing the saturation by 10% instead.



 BA928F

FFFFFF

 F3C8C5

 FFE4E1

FFFFFFD

 BA928F

 BA817C

 BA928F

 9F7875

 845F5D

 6A4745

 51312F

 391B1A

 250300

 000000

 BA928F

 BAA3A2

 BA6F6A

 BAB5B4

 BA5E57

 BAC6C7

 BA4D45

 BAD7D9

 BA3B32

 BAE9EC

 BA2A1F

 BAFAFF

 BA190D

 BAFFFF

 BA0D00

# Harmonies

## Analogous

The Analogous color harmony consists of three colors that are next to each other on the color wheel.



B8919E



BA928F



B49584

# Triad

The Triadic color harmony groups three colors that are evenly spaced from another and form a triangle on the color wheel.



BA928F



88A28B



899DB8

# Complementary

The Complementary color scheme is a pair of colors which are on the opposite of each other on the color wheel.



BA928F



8FB7BA

# Split Complementary

Split-complementary colors differ from the complementary color scheme. The scheme consists of three colors, the original color and two neighbors of the complement color.



7AA1B3



BA928F



7AA499

# Square

The Square scheme is like the rectangle color scheme, but the four colors are evenly spaced on the color wheel.



BA928F



999F81



75A4A8



9C98B5

# Rectangle

The Rectangle color scheme consists of four colors that form a rectangle on the color wheel.



BA928F



AD987F



75A4A8



839FB7



# Sweetspot

The Sweet Spot groups the original color and five complimentary colors.



BA928F



F2E2E1



BA8FB7



7A7171



FAFAFA



7A7A7A



# Same Dimension

The Same Dimension uses a secret algorithm to generate beautiful new colors.



BA928F



F2B3AE



BAA78F



5C5353



9C0B00



1C0200



# Inverse Universe

The Inverse Universe completely reimagines the original color for something new.



8FB7BA



AEEEF2



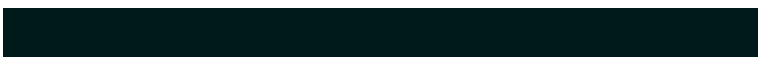
8FA2BA



535B5C



00919C

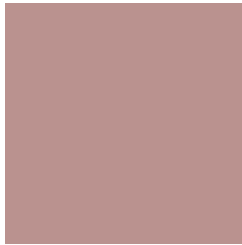


001A1C



# Previews

## White Background



This preview shows how the Hex color BA928F looks on a white background.

## Color Contrast Check

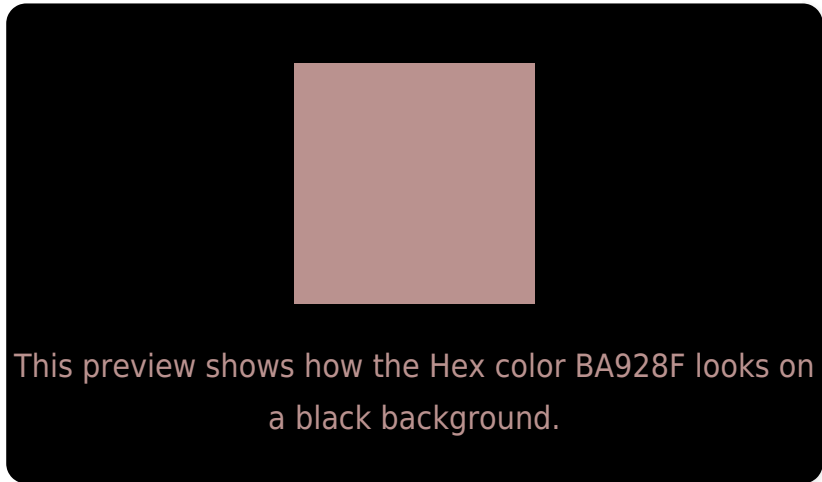
Large Text (above 18pt) WCAG AA × Fail

Any Text WCAG AA × Fail

Large Text (above 18pt) WCAG AAA × Fail

Any Text WCAG AAA × Fail

# Black Background



## Color Contrast Check

Large Text (above 18pt) WCAG AA ✓ Pass

Any Text WCAG AA ✓ Pass

Large Text (above 18pt) WCAG AAA ✓ Pass

Any Text WCAG AAA ✓ Pass

If you want to check with other color combinations, try the [Color Contrast Checker](#).



## Hex BA928F Background



This preview shows how black text looks on a background with the Hex color BA928F.



This preview shows how white text looks on a background with the Hex color BA928F.

# Color Blindness Simulation

Color vision deficiency is a very complex topic, and I could not describe the different causes any better than Wikipedia does, so if you want to learn more, you should check out their [article about color blindness](#).

## Dichromacy



**Original Color**  
BA928F

**Protanopia**  
A09B94

**Deuteranopia**  
B0968E



**Tritanopia**  
BB909B

# Trichromacy



**Original Color**  
BA928F

**Protanomaly**  
A99892

**Deuteranomaly**  
B4958E

**Tritanomaly**  
BB9197

# Monochromacy



**Original Color**  
BA928F

**Achromatopsia**  
9E9E9E

**Achromatomaly**  
A89A99

# CSS Examples

## Text

The CSS property to change the color of the text to Hex BA928F is called "color". The color property can be set on classes, ids or directly on the HTML element.

This example shows how text in the color #BA928F looks like.

```
.text, #text, p{  
    color:#BA928F  
}
```

If you want to add a text shadow in that color use the text-shadow property, you can generate a text shadow directly with our [CSS Text Shadow Generator](#).

Here you see how black text with a 4 pixel #BA928F colored shadow looks like.

```
.shadow{ text-shadow: 4px 4px 2px #BA928F
}
```

## Border

The CSS property to change the border of an element to Hex BA928F is called "border". The border property can be set on classes, ids or directly on the HTML element.

This example shows the color as border, it can be applied via the CSS property "border" or "border-color".

```
.border, #border, table{ border:4px solid
#BA928F }
```

If only the border color should be changed use the property `border-color`.

```
.border{ border-color:#BA928F }
```

If you want to add a box shadow in that color use:

Here you see how a box with a 4 pixel #BA928F colored shadow looks like.

```
.boxshadow{ -moz-box-shadow:4px 4px 4px  
4px #BA928F; -webkit-box-shadow:4px 4px  
4px 4px #BA928F; box-shadow:4px 4px 4px  
4px #BA928F }
```

# Background

The CSS property to change the background color of an element to Hex BA928F is called "background". The background property can be set on classes, ids or directly on the HTML element.

```
.background, #background, body{  
background:#BA928F }
```

If only the background color should be changed can be used:

```
.background{ background-color:#BA928F }
```

This example shows the color as background, it is applied via the CSS property "background".

To optimize and compress your CSS code, you can use our [online CSS compressor and optimizer](#) based on csstidy. If you want to create a linear or radial gradient as background or border, check our [CSS Gradient Generator](#).



Hey! You found this booklet interesting? Support Converting Colors with the new Membership Option!

The pro membership hides all ads, plus gives you double the colors in the color bucket, and more awesome pro features!

**[Learn more, Memberships starting at \\$2.50/m!](#)**

**Follow me  
on Twitter!**

@ConvertingColor