

# Converting Colors

Hex(BA939D)

Have a look what the booklet for  
Hex(BA939D) contains.

|  |    |
|--|----|
| <b>Hex(BA939D)</b> .....                       | 3  |
| <b><i>Conversions</i></b> .....                | 4  |
| <b><i>Details</i></b> .....                    | 6  |
| <b><i>Harmonies</i></b> .....                  | 11 |
| <b><i>Previews</i></b> .....                   | 23 |
| <b><i>Color Blindness Simulation</i></b> ..... | 26 |
| <b><i>CSS Examples</i></b> .....               | 29 |

# **Color**

**Hex(BA939D)**

# Conversions

## Conversions Part 1

| Format      | Color                      |
|-------------|----------------------------|
| Hex         | BA939D                     |
| RGB         | 186, 147, 157              |
| RGB Percent | 73%, 58%, 62%              |
| CMY         | 0.2706, 0.4235, 0.3843     |
| CMYK        | 0.00, 0.21, 0.16, 0.27     |
| HSL         | 345°, 22%, 65%             |
| HSV         | 345°, 21%, 73%             |
| XYZ         | 36.7692, 33.7409, 36.4730  |
| YIQ         | 159.8010, 20.0340, 11.3780 |

# Conversions

## Conversions Part 2

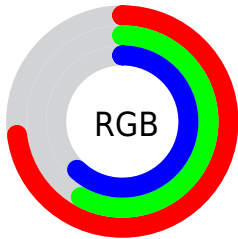
| <b>Format</b>                       | <b>Color</b>                  |
|-------------------------------------|-------------------------------|
| <b>R<sub>YB</sub></b>               | 186, 147, 157                 |
| Decimal                             | 12227485                      |
| CIE <sub>Lab</sub>                  | 64.76, 16.23, 0.34            |
| CIE <sub>LCh</sub>                  | 65, 16.238, 1.185             |
| Yxy                                 | 33.7409, 0.3437,<br>0.3154    |
| Android<br>(android.graphics.Color) | 4290417565<br>(0xFFBA939D)    |
| YUV                                 | 159.8010, -1.3809,<br>22.9765 |
| Hunter-Lab                          | 58.0869, 11.3391,<br>3.4324   |

# Details

The Hex color **BA939D** is a light color, and the websafe version is hex **CC9999**. A complement of this color would be **93BAB0**, and the grayscale version is **A0A0A0**.

A 20% lighter version of the original color is **F3C9D3**, and **84606A** is the 20% darker color. If you saturate the color by 10%, you get **BA808F**, and if you desaturate by 10%, it is **BAA6AB**.

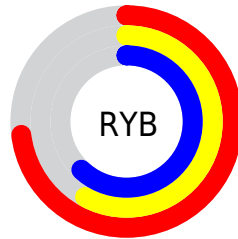
# Distribution



Red (73%)

Green (58%)

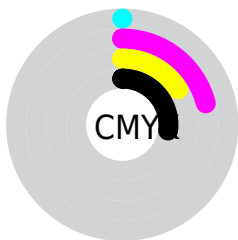
Blue (62%)



Red (73%)

Yellow (58%)

Blue (62%)

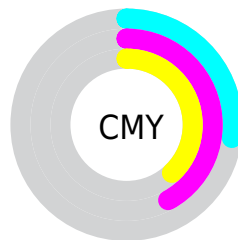


Cyan (0%)

Magenta (21%)

Yellow (16%)

Black (27%)



Cyan (27%)

Magenta (42%)

Yellow (38%)

# Brightness & Saturation Gradients

These gradients show how the Hex color BA939D changes by changing the brightness by 10 percent. The first figure shows a shift by +10% for each color and the second figure -10%.

Similar to the brightness gradients but the following saturation gradients show a change of the Hex color BA939D by changing the saturation by 10% instead.



 BA939D

 BA939D

FFFFFF

 9F7983

 F3C9D3

 84606A

 FFE5F0

 6B4852

 52313B

 3A1C25

 250510

 000000

 BA939D

 BA939D

 BA808F

 BAA6AB

 BA6E81

 BAB8B9

 BA5B74

 BACBC6

 BA4966

 BADDD4

 BA3658

 BAF0E2

 BA234A

 BAFFFO

 BA113C

 BAFFFE

 BA0030

 BAFFFF

# Harmonies

## Analogous

The Analogous color harmony consists of three colors that are next to each other on the color wheel.



B195AB



BA939D



BB948F

# Triad

The Triadic color harmony groups three colors that are evenly spaced from another and form a triangle on the color wheel.



BA939D



98A184



7DA2B6

# Complementary

The Complementary color scheme is a pair of colors which are on the opposite of each other on the color wheel.



BA939D



93BAB0

# Split Complementary

Split-complementary colors differ from the complementary color scheme. The scheme consists of three colors, the original color and two neighbors of the complement color.



76A5AC



BA939D



88A48F

# Square

The Square scheme is like the rectangle color scheme, but the four colors are evenly spaced on the color wheel.



BA939D



A89C80



7BA69D



8E9EBA

# Rectangle

The Rectangle color scheme consists of four colors that form a rectangle on the color wheel.



BA939D



B89687



7BA69D



7AA3B3

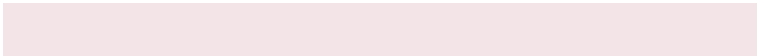


# Sweetspot

The Sweet Spot groups the original color and five complimentary colors.



BA939D



F2E4E7



B093BA



7A7274



FAFAFA



7A7A7A



# Same Dimension

The Same Dimension uses a secret algorithm to generate beautiful new colors.



BA939D



F2B6C5



BA9C93



5C5355



9C0028



1C0007



# Inverse Universe

The Inverse Universe completely reimagines the original color for something new.



BA939D



F2B6C5



93B1BA



5C5355



9C0028

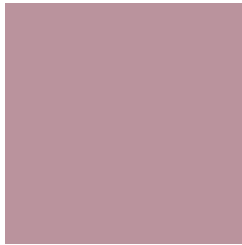


1C0007



# Previews

## White Background



This preview shows how the Hex color BA939D looks on a white background.

## Color Contrast Check

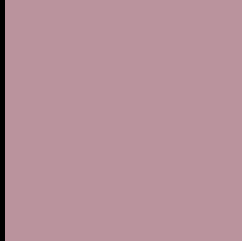
Large Text (above 18pt) WCAG AA × Fail

Any Text WCAG AA × Fail

Large Text (above 18pt) WCAG AAA × Fail

Any Text WCAG AAA × Fail

# Black Background



This preview shows how the Hex color BA939D looks on a black background.

## Color Contrast Check

Large Text (above 18pt) WCAG AA ✓ Pass

Any Text WCAG AA ✓ Pass

Large Text (above 18pt) WCAG AAA ✓ Pass

Any Text WCAG AAA ✓ Pass

If you want to check with other color combinations, try the [Color Contrast Checker](#).



## Hex BA939D Background



This preview shows how black text looks on a background with the Hex color BA939D.

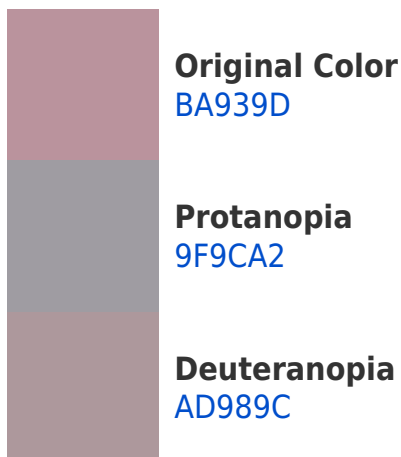



This preview shows how white text looks on a background with the Hex color BA939D.

# Color Blindness Simulation

Color vision deficiency is a very complex topic, and I could not describe the different causes any better than Wikipedia does, so if you want to learn more, you should check out their [article about color blindness](#).

## Dichromacy





**Tritanopia**  
BA939E

# Trichromacy



**Original Color**  
BA939D

**Protanomaly**  
A999A0

**Deuteranomaly**  
B2969C

**Tritanomaly**  
BA939E

# Monochromacy



**Original Color**  
BA939D

**Achromatopsia**  
A0A0A0

**Achromatomaly**  
A99B9F

# CSS Examples

## Text

The CSS property to change the color of the text to Hex BA939D is called "color". The color property can be set on classes, ids or directly on the HTML element.

This example shows how text in the color #BA939D looks like.

```
.text, #text, p{  
    color:#BA939D  
}
```

If you want to add a text shadow in that color use the text-shadow property, you can generate a text shadow directly with our [CSS Text Shadow Generator](#).

Here you see how black text with a 4 pixel #BA939D colored shadow looks like.

```
.shadow{ text-shadow: 4px 4px 2px #BA939D
}
```

## Border

The CSS property to change the border of an element to Hex BA939D is called "border". The border property can be set on classes, ids or directly on the HTML element.

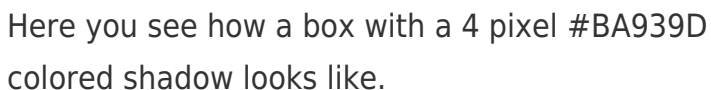
This example shows the color as border, it can be applied via the CSS property "border" or "border-color".

```
.border, #border, table{ border:4px solid
#BA939D }
```

If only the border color should be changed use the property `border-color`.

```
.border{ border-color:#BA939D }
```

If you want to add a box shadow in that color use:



Here you see how a box with a 4 pixel #BA939D colored shadow looks like.

```
.boxshadow{ -moz-box-shadow:4px 4px 4px  
4px #BA939D; -webkit-box-shadow:4px 4px  
4px 4px #BA939D; box-shadow:4px 4px 4px  
4px #BA939D }
```

# Background

The CSS property to change the background color of an element to Hex BA939D is called "background". The background property can be set on classes, ids or directly on the HTML element.

```
.background, #background, body{  
background:#BA939D }
```

If only the background color should be changed can be used:

```
.background{ background-color:#BA939D }
```

This example shows the color as background, it is applied via the CSS property "background".

To optimize and compress your CSS code, you can use our [online CSS compressor and optimizer](#) based on csstidy. If you want to create a linear or radial gradient as background or border, check our [CSS Gradient Generator](#).



Hey! You found this booklet interesting? Support Converting Colors with the new Membership Option!

The pro membership hides all ads, plus gives you double the colors in the color bucket, and more awesome pro features!

**[Learn more, Memberships starting at \\$2.50/m!](#)**

**Follow me  
on Twitter!**

@ConvertingColor