

Converting Colors

Hex(BA9CA9)

Have a look what the booklet for
Hex(BA9CA9) contains.

Hex(BA9CA9)	3
<i>Conversions</i>	4
<i>Details</i>	6
<i>Harmonies</i>	11
<i>Previews</i>	23
<i>Color Blindness Simulation</i>	26
<i>CSS Examples</i>	29

Color

Hex(BA9CA9)

Conversions

Conversions Part 1

Format	Color
Hex	BA9CA9
RGB	186, 156, 169
RGB Percent	73%, 61%, 66%
CMY	0.2706, 0.3882, 0.3373
CMYK	0.00, 0.16, 0.09, 0.27
HSL	334°, 18%, 67%
HSV	334°, 16%, 73%
XYZ	39.2996, 37.0806, 42.6221
YIQ	166.4520, 13.7070, 10.4030

Conversions

Conversions Part 2

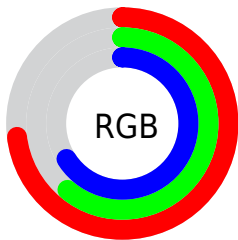
Format	Color
R_{YB}	186, 156, 169
Decimal	12229801
CIE Lab	67.34, 13.28, -2.62
CIE LCh	67, 13.537, 348.848
Yxy	37.0806, 0.3302, 0.3116
Android (android.graphics.Color)	4290419881 (0xFFBA9CA9)
YUV	166.4520, 1.2562, 17.1436
Hunter-Lab	60.8939, 8.6359, 1.1262

Details

The Hex color **BA9CA9** is a light color, and the websafe version is hex **CC9999**. A complement of this color would be **9CBAAD**, and the grayscale version is **A6A6A6**.

A 20% lighter version of the original color is **F2D3E0**, and **856975** is the 20% darker color. If you saturate the color by 10%, you get **BA899E**, and if you desaturate by 10%, it is **BAAF4B**.

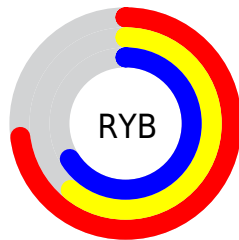
Distribution



Red (73%)

Green (61%)

Blue (66%)



Red (73%)

Yellow (61%)

Blue (66%)

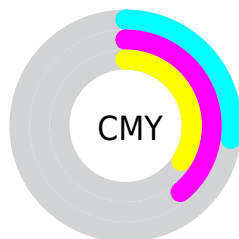


Cyan (0%)

Magenta (16%)

Yellow (9%)

Black (27%)



Cyan (27%)

Magenta (39%)

Yellow (34%)

Brightness & Saturation Gradients

These gradients show how the Hex color BA9CA9 changes by changing the brightness by 10 percent. The first figure shows a shift by +10% for each color and the second figure -10%.

Similar to the brightness gradients but the following saturation gradients show a change of the Hex color BA9CA9 by changing the saturation by 10% instead.

 BA9CA9

 BA9CA9

FFFFFF

 9F828F

 F2D3E0

 856975

 FFEFFD

 6B505C

 533945

 3B242F

 250F1A

 050000

 000000

 BA9CA9

 BA9CA9

 BA899E

 BAAFB4

 BA7794

 BAC1BE

 BA6489

 BAD4C9

 BA527F

 BAE6D3

 BA3F74

 BAF9DE

 BA2C6A

 BAFFE8

 BA1A5F

 BAFFF3

 BA0755

 BAFFFD

 BA0051

 BAFFFF

Harmonies

Analogous

The Analogous color harmony consists of three colors that are next to each other on the color wheel.



AF9EB4



BA9CA9



BE9C9D

Triad

The Triadic color harmony groups three colors that are evenly spaced from another and form a triangle on the color wheel.



BA9CA9



A5A68D



87AAB6

Complementary

The Complementary color scheme is a pair of colors which are on the opposite of each other on the color wheel.



BA9CA9



9CBAAD

Split Complementary

Split-complementary colors differ from the complementary color scheme. The scheme consists of three colors, the original color and two neighbors of the complement color.



85ABAB



BA9CA9



97A994

Square

The Square scheme is like the rectangle color scheme, but the four colors are evenly spaced on the color wheel.



BA9CA9



B2A28C



8BAB9F



91A6BC

Rectangle

The Rectangle color scheme consists of four colors that form a rectangle on the color wheel.



BA9CA9



BD9D95



8BAB9F



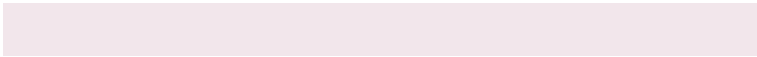
85AAB3

Sweetspot

The Sweet Spot groups the original color and five complimentary colors.



BA9CA9



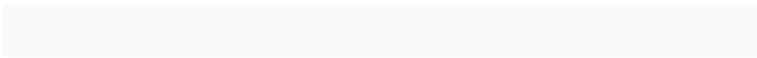
F2E6EB



AD9CBA



7A7376



FAFAFA



7A7A7A

Same Dimension

The Same Dimension uses a secret algorithm to generate beautiful new colors.



BA9CA9



F2C4D8



BA9E9C



5C5357



9C0043



1C000C

Inverse Universe

The Inverse Universe completely reimagines the original color for something new.



BA9CA9



F2C4D8



9CB8BA



5C5357



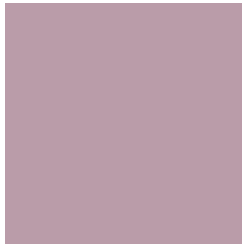
9C0043



1C000C

Previews

White Background



This preview shows how the Hex color BA9CA9 looks on a white background.

Color Contrast Check

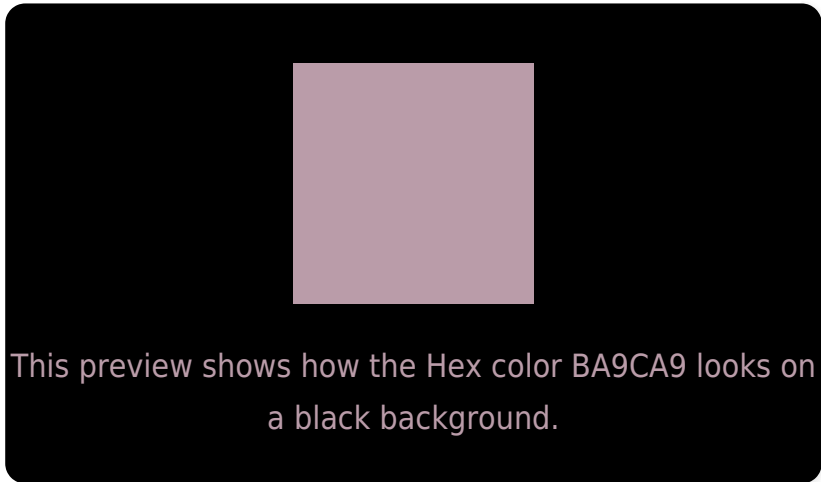
Large Text (above 18pt) WCAG AA × Fail

Any Text WCAG AA × Fail

Large Text (above 18pt) WCAG AAA × Fail

Any Text WCAG AAA × Fail

Black Background



Color Contrast Check

Large Text (above 18pt) WCAG AA ✓ Pass

Any Text WCAG AA ✓ Pass

Large Text (above 18pt) WCAG AAA ✓ Pass

Any Text WCAG AAA ✓ Pass

If you want to check with other color combinations, try the [Color Contrast Checker](#).

Hex BA9CA9 Background



This preview shows how black text looks on a background with the Hex color BA9CA9.

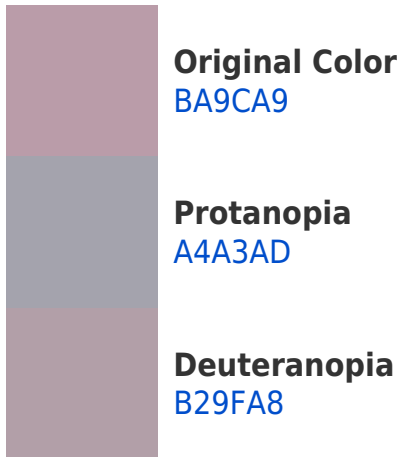


This preview shows how white text looks on a background with the Hex color BA9CA9.

Color Blindness Simulation

Color vision deficiency is a very complex topic, and I could not describe the different causes any better than Wikipedia does, so if you want to learn more, you should check out their [article about color blindness](#).

Dichromacy





Tritanopia
BA9CA8

Trichromacy



Original Color
BA9CA9

Protanomaly
ACA0AC

Deuteranomaly
B59EA8

Tritanomaly
BA9CA8

Monochromacy



Original Color
BA9CA9

Achromatopsia
A6A6A6

Achromatomaly
ADA2A7

CSS Examples

Text

The CSS property to change the color of the text to Hex BA9CA9 is called "color". The color property can be set on classes, ids or directly on the HTML element.

This example shows how text in the color #BA9CA9 looks like.

```
.text, #text, p{  
    color:#BA9CA9  
}
```

If you want to add a text shadow in that color use the text-shadow property, you can generate a text shadow directly with our [CSS Text Shadow Generator](#).

Here you see how black text with a 4 pixel #BA9CA9 colored shadow looks like.

```
.shadow{ text-shadow: 4px 4px 2px #BA9CA9
}
```

Border

The CSS property to change the border of an element to Hex BA9CA9 is called "border". The border property can be set on classes, ids or directly on the HTML element.

This example shows the color as border, it can be applied via the CSS property "border" or "border-color".

```
.border, #border, table{ border:4px solid
#BA9CA9 }
```

If only the border color should be changed use the property `border-color`.

```
.border{ border-color:#BA9CA9 }
```

If you want to add a box shadow in that color use:

Here you see how a box with a 4 pixel #BA9CA9 colored shadow looks like.

```
.boxshadow{ -moz-box-shadow:4px 4px 4px  
4px #BA9CA9; -webkit-box-shadow:4px 4px  
4px 4px #BA9CA9; box-shadow:4px 4px 4px  
4px #BA9CA9 }
```

Background

The CSS property to change the background color of an element to Hex BA9CA9 is called "background". The background property can be set on classes, ids or directly on the HTML element.

```
.background, #background, body{  
background:#BA9CA9 }
```

If only the background color should be changed can be used:

```
.background{ background-color:#BA9CA9 }
```

This example shows the color as background, it is applied via the CSS property "background".

To optimize and compress your CSS code, you can use our [online CSS compressor and optimizer](#) based on csstidy. If you want to create a linear or radial gradient as background or border, check our [CSS Gradient Generator](#).

Hey! You found this booklet interesting? Support Converting Colors with the new Membership Option!

The pro membership hides all ads, plus gives you double the colors in the color bucket, and more awesome pro features!

[Learn more, Memberships starting at \\$2.50/m!](#)

**Follow me
on Twitter!**

@ConvertingColor