

# Converting Colors

Hex(BAA0A2)

Have a look what the booklet for  
Hex(BAA0A2) contains.

<b>Hex(BAA0A2)</b> .....	3
<i><b>Conversions</b></i> .....	4
<i><b>Details</b></i> .....	6
<i><b>Harmonies</b></i> .....	11
<i><b>Previews</b></i> .....	23
<i><b>Color Blindness Simulation</b></i> .....	26
<i><b>CSS Examples</b></i> .....	29

# **Color**

**Hex(BAA0A2)**

# Conversions

## Conversions Part 1

Format	Color
Hex	<a href="#">BAA0A2</a>
RGB	<a href="#">186, 160, 162</a>
RGB Percent	<a href="#">73%, 63%, 64%</a>
CMY	<a href="#">0.2706, 0.3725, 0.3647</a>
CMYK	<a href="#">0.00, 0.14, 0.13, 0.27</a>
HSL	<a href="#">355°, 16%, 68%</a>
HSV	<a href="#">355°, 14%, 73%</a>
XYZ	<a href="#">39.3421, 38.1893, 39.4801</a>
YIQ	<a href="#">168.0020, 14.8540, 6.1340</a>

# Conversions

## Conversions Part 2

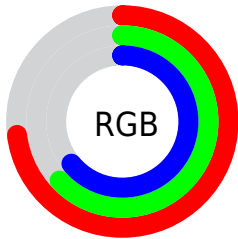
Format	Color
<a href="#">RYB</a>	<a href="#">186, 160, 162</a>
Decimal	<a href="#">12230818</a>
CIELab	<a href="#">68.16, 9.87, 2.49</a>
CIElCh	<a href="#">68, 10.179, 14.142</a>
Yxy	<a href="#">38.1893, 0.3362, 0.3264</a>
Android (android.graphics.Color)	<a href="#">4290420898</a> ( <a href="#">0xFFBAA0A2</a> )
YUV	<a href="#">168.0020, -2.9590, 15.7842</a>
Hunter-Lab	<a href="#">61.7975, 5.4926, 5.3801</a>

# Details

The Hex color **BAA0A2** is a light color, and the websafe version is hex **CC9999**. A complement of this color would be **A0BAB8**, and the grayscale version is **A8A8A8**.

A 20% lighter version of the original color is **F2D7D9**, and **856C6E** is the 20% darker color. If you saturate the color by 10%, you get **BA8D91**, and if you desaturate by 10%, it is **BAB3B3**.

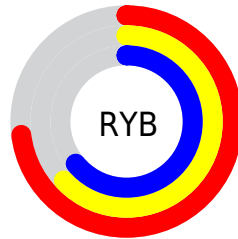
# Distribution



Red (73%)

Green (63%)

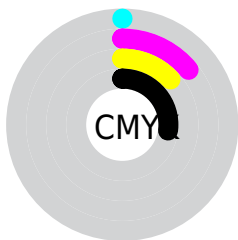
Blue (64%)



Red (73%)

Yellow (63%)

Blue (64%)

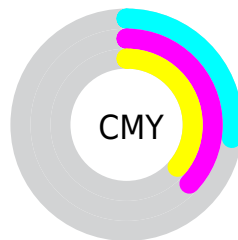


Cyan (0%)

Magenta (14%)

Yellow (13%)

Black (27%)



Cyan (27%)

Magenta (37%)

Yellow (36%)

# Brightness & Saturation Gradients

These gradients show how the Hex color BAA0A2 changes by changing the brightness by 10 percent. The first figure shows a shift by +10% for each color and the second figure -10%.

Similar to the brightness gradients but the following saturation gradients show a change of the Hex color BAA0A2 by changing the saturation by 10% instead.





BAA0A2



BAA0A2

FFFFFF



9F8688



F2D7D9



856C6E



FFF3F5



6B5456



533D3F



3B2729



251315



050000



000000



BAA0A2



BAA0A2

 BA8D91

 BAB3B3

 BA7B80

 BAC5C4

 BA686E

 BAD8D6

 BA565D

 BAEAE7

 BA434C

 BAFDF8

 BA303B

 BAFFFF

 BA1E2A

 BA0B19

 BA000E

# Harmonies

## Analogous

The Analogous color harmony consists of three colors that are next to each other on the color wheel.



B6A0AB



BAA0A2



B9A19A

# Triad

The Triadic color harmony groups three colors that are evenly spaced from another and form a triangle on the color wheel.



BAA0A2



9EAA99



97A8B8

# Complementary

The Complementary color scheme is a pair of colors which are on the opposite of each other on the color wheel.



BAA0A2



A0BAB8

# Split Complementary

Split-complementary colors differ from the complementary color scheme. The scheme consists of three colors, the original color and two neighbors of the complement color.



90ABB3



BAA0A2



95ABA1

# Square

The Square scheme is like the rectangle color scheme, but the four colors are evenly spaced on the color wheel.



BAA0A2



A9A794



90ACAA



A2A5B8

# Rectangle

The Rectangle color scheme consists of four colors that form a rectangle on the color wheel.



BAA0A2



B5A396



90ACAA



94A9B6

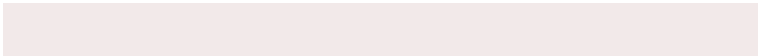


# Sweetspot

The Sweet Spot groups the original color and five complimentary colors.



BAA0A2



F2E9E9



B8A0BA



7A7475



FAFAFA



7A7A7A



# Same Dimension

The Same Dimension uses a secret algorithm to generate beautiful new colors.



BAA0A2



F2C9CC



BAABA0



5C5353



9C000C



1C0002



# Inverse Universe

The Inverse Universe completely reimagines the original color for something new.



BAA0A2



F2C9CC



A0AFBA



5C5353



9C000C

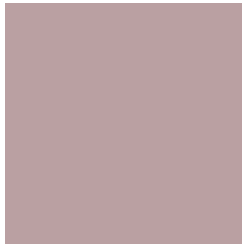


1C0002



# Previews

## White Background



This preview shows how the Hex color BAA0A2 looks on a white background.

## Color Contrast Check

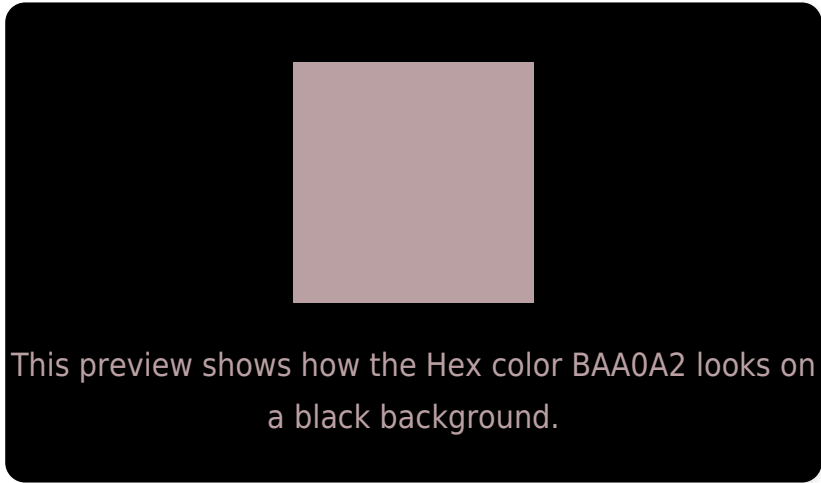
Large Text (above 18pt) WCAG AA × Fail

Any Text WCAG AA × Fail

Large Text (above 18pt) WCAG AAA × Fail

Any Text WCAG AAA × Fail

# Black Background



## Color Contrast Check

Large Text (above 18pt) WCAG AA ✓ Pass

Any Text WCAG AA ✓ Pass

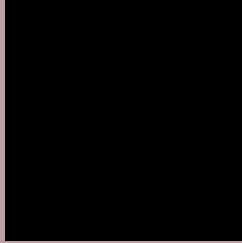
Large Text (above 18pt) WCAG AAA ✓ Pass

Any Text WCAG AAA ✓ Pass

If you want to check with other color combinations, try the [Color Contrast Checker](#).



## Hex BAA0A2 Background



This preview shows how black text looks on a background with the Hex color BAA0A2.



This preview shows how white text looks on a background with the Hex color BAA0A2.

# Color Blindness Simulation

Color vision deficiency is a very complex topic, and I could not describe the different causes any better than Wikipedia does, so if you want to learn more, you should check out their [article about color blindness](#).

## Dichromacy



**Original Color**  
BAA0A2

**Protanopia**  
A9A5A5

**Deuteranopia**  
B8A1A2



**Tritanopia**  
BB9FAB

# Trichromacy



**Original Color**  
BAA0A2

**Protanomaly**  
AFA3A4

**Deuteranomaly**  
B9A1A2

**Tritanomaly**  
BB9FA8

# Monochromacy



**Original Color**  
BAA0A2

**Achromatopsia**  
A8A8A8

**Achromatomaly**  
AFA5A6

# CSS Examples

## Text

The CSS property to change the color of the text to Hex BAA0A2 is called "color". The color property can be set on classes, ids or directly on the HTML element.

This example shows how text in the color #BAA0A2 looks like.

```
.text, #text, p{  
    color:#BAA0A2  
}
```

If you want to add a text shadow in that color use the text-shadow property, you can generate a text shadow directly with our [CSS Text Shadow Generator](#).

Here you see how black text with a 4 pixel #BAA0A2 colored shadow looks like.

```
.shadow{ text-shadow: 4px 4px 2px #BAA0A2
}
```

## Border

The CSS property to change the border of an element to Hex BAA0A2 is called "border". The border property can be set on classes, ids or directly on the HTML element.

This example shows the color as border, it can be applied via the CSS property "border" or "border-color".

```
.border, #border, table{ border:4px solid
#BAA0A2 }
```

If only the border color should be changed use the property `border-color`.

```
.border{ border-color:#BAA0A2 }
```

If you want to add a box shadow in that color use:

Here you see how a box with a 4 pixel #BAA0A2 colored shadow looks like.

```
.boxshadow{ -moz-box-shadow:4px 4px 4px  
4px #BAA0A2; -webkit-box-shadow:4px 4px  
4px 4px #BAA0A2; box-shadow:4px 4px 4px  
4px #BAA0A2 }
```

# Background

The CSS property to change the background color of an element to Hex BAA0A2 is called "background". The background property can be set on classes, ids or directly on the HTML element.

```
.background, #background, body{  
background:#BAA0A2 }
```

If only the background color should be changed can be used:

```
.background{ background-color:#BAA0A2 }
```

This example shows the color as background, it is applied via the CSS property "background".

To optimize and compress your CSS code, you can use our [online CSS compressor and optimizer](#) based on csstidy. If you want to create a linear or radial gradient as background or border, check our [CSS Gradient Generator](#).



Hey! You found this booklet interesting? Support Converting Colors with the new Membership Option!

The pro membership hides all ads, plus gives you double the colors in the color bucket, and more awesome pro features!

**[Learn more, Memberships starting at \\$2.50/m!](#)**

**Follow me  
on Twitter!**

@ConvertingColor