

Converting Colors

Hex(BB7A47)

Have a look what the booklet for
Hex(BB7A47) contains.

Hex(BB7A47)	3
<i>Conversions</i>	4
<i>Details</i>	6
<i>Harmonies</i>	11
<i>Previews</i>	23
<i>Color Blindness Simulation</i>	26
<i>CSS Examples</i>	29

Color

Hex(BB7A47)

Conversions

Conversions Part 1

Format	Color
Hex	BB7A47
RGB	187, 122, 71
RGB Percent	73%, 48%, 28%
CMY	0.2667, 0.5216, 0.7216
CMYK	0.00, 0.35, 0.62, 0.27
HSL	26°, 46%, 51%
HSV	26°, 62%, 73%
XYZ	28.5904, 24.9388, 9.2680
YIQ	135.6210, 55.1110, -2.0810

Conversions

Conversions Part 2

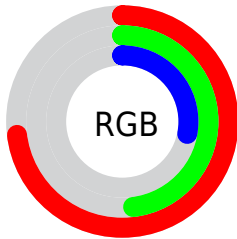
Format	Color
RYB	187, 162, 71
Decimal	12286535
CIELab	57.02, 20.29, 37.91
CIELCh	57, 43.000, 61.843
Yxy	24.9388, 0.4553, 0.3971
Android (android.graphics.Color)	4290476615 (0xFFBB7A47)
YUV	135.6210, -31.8582, 45.0594
Hunter-Lab	49.9388, 14.8000, 23.9536

Details

The Hex color **BB7A47** is a dark color, and the websafe version is hex **996633**. A complement of this color would be **4788BB**, and the grayscale version is **888888**.

A 20% lighter version of the original color is **F6AF79**, and **824918** is the 20% darker color. If you saturate the color by 10%, you get **BB7034**, and if you desaturate by 10%, it is **BB845A**.

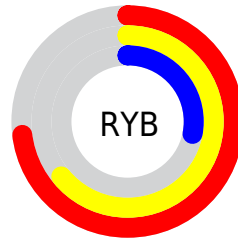
Distribution



Red (73%)

Green (48%)

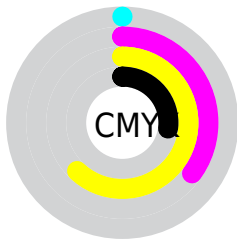
Blue (28%)



Red (73%)

Yellow (64%)

Blue (28%)

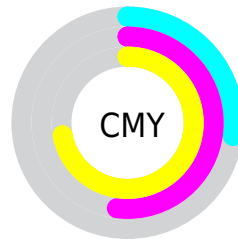


Cyan (0%)

Magenta (35%)

Yellow (62%)

Black (27%)



Cyan (27%)

Magenta (52%)

Yellow (72%)

Brightness & Saturation Gradients

These gradients show how the Hex color BB7A47 changes by changing the brightness by 10 percent. The first figure shows a shift by +10% for each color and the second figure -10%.

Similar to the brightness gradients but the following saturation gradients show a change of the Hex color BB7A47 by changing the saturation by 10% instead.

 BB7A47

 BB7A47

FFFFFF

 9E612F

 F6AF79

 824918

 FFCA93

 663200

 FFE6AE

 4B1C00

 FFFFCA

 300700

 FFFF E6

 120000

 000000

 BB7A47

 BB7A47

 BB7034

 BB845A

 BB6522

 BB8F6C

 BB5B0F

 BB997F

 BB5200

 BBA492

 BBAAE5

 BBB9B7

 BBC3CA

 BBCEDD

 BBD8EF

Harmonies

Analogous

The Analogous color harmony consists of three colors that are next to each other on the color wheel.



CD6E63



BB7A47



9D883B

Triad

The Triadic color harmony groups three colors that are evenly spaced from another and form a triangle on the color wheel.



BB7A47



009C8A



8E7EC9

Complementary

The Complementary color scheme is a pair of colors which are on the opposite of each other on the color wheel.



BB7A47



4788BB

Split Complementary

Split-complementary colors differ from the complementary color scheme. The scheme consists of three colors, the original color and two neighbors of the complement color.



4A8CD4



BB7A47



009BAF

Square

The Square scheme is like the rectangle color scheme, but the four colors are evenly spaced on the color wheel.



BB7A47



459964



0096CA



B970AD

Rectangle

The Rectangle color scheme consists of four colors that form a rectangle on the color wheel.



BB7A47



848F40



0096CA



7B83CE

Sweetspot

The Sweet Spot groups the original color and five complimentary colors.



BB7A47



F2D8C4



BB4789



7A6B5E



FAFAFA



7A7A7A

Same Dimension

The Same Dimension uses a secret algorithm to generate beautiful new colors.



BB7A47



F28E3F



BBB347



5E5955



9E4600



1F0D00

Inverse Universe

The Inverse Universe completely reimagines the original color for something new.



4788BB



3FA3F2



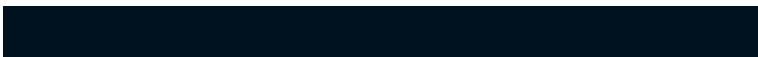
474FBB



555A5E



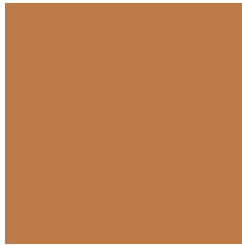
00599E



00111F

Previews

White Background



This preview shows how the Hex color BB7A47 looks on a white background.

Color Contrast Check

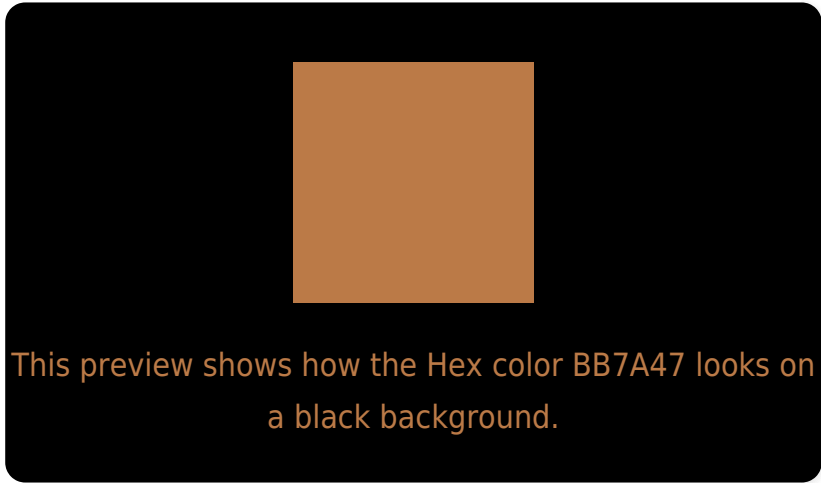
Large Text (above 18pt) WCAG AA ✓ Pass

Any Text WCAG AA ✗ Fail

Large Text (above 18pt) WCAG AAA ✗ Fail

Any Text WCAG AAA ✗ Fail

Black Background



Color Contrast Check

Large Text (above 18pt) WCAG AA ✓ Pass

Any Text WCAG AA ✓ Pass

Large Text (above 18pt) WCAG AAA ✓ Pass

Any Text WCAG AAA × Fail

If you want to check with other color combinations, try the [Color Contrast Checker](#).

Hex BB7A47 Background



This preview shows how black text looks on a background with the Hex color BB7A47.



This preview shows how white text looks on a background with the Hex color BB7A47.

Color Blindness Simulation

Color vision deficiency is a very complex topic, and I could not describe the different causes any better than Wikipedia does, so if you want to learn more, you should check out their [article about color blindness](#).

Dichromacy



Original Color
BB7A47

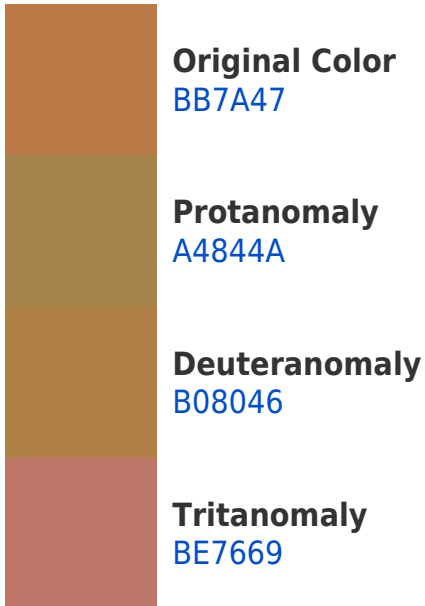
Protanopia
97894C

Deuteranopia
A98345

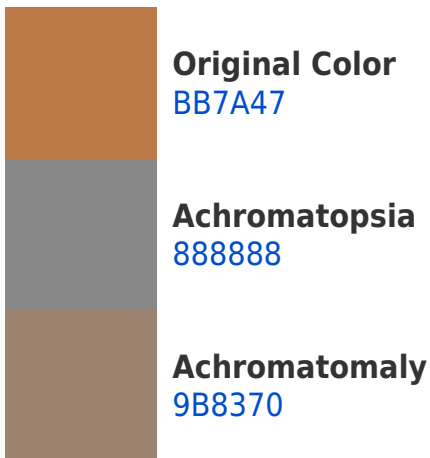


Tritanopia
BF747C

Trichromacy



Monochromacy



CSS Examples

Text

The CSS property to change the color of the text to Hex BB7A47 is called "color". The color property can be set on classes, ids or directly on the HTML element.

This example shows how text in the color #BB7A47 looks like.

```
.text, #text, p{  
    color:#BB7A47  
}
```

If you want to add a text shadow in that color use the text-shadow property, you can generate a text shadow directly with our [CSS Text Shadow Generator](#).

Here you see how black text with a 4 pixel #BB7A47 colored shadow looks like.

```
.shadow{ text-shadow: 4px 4px 2px #BB7A47  
}
```

Border

The CSS property to change the border of an element to Hex BB7A47 is called "border". The border property can be set on classes, ids or directly on the HTML element.

This example shows the color as border, it can be applied via the CSS property "border" or "border-color".

```
.border, #border, table{ border:4px solid  
#BB7A47 }
```

If only the border color should be changed use the property `border-color`.

```
.border{ border-color:#BB7A47 }
```

If you want to add a box shadow in that color use:

Here you see how a box with a 4 pixel #BB7A47 colored shadow looks like.

```
.boxshadow{ -moz-box-shadow:4px 4px 4px  
4px #BB7A47; -webkit-box-shadow:4px 4px  
4px 4px #BB7A47; box-shadow:4px 4px 4px  
4px #BB7A47 }
```

Background

The CSS property to change the background color of an element to Hex BB7A47 is called "background". The background property can be set on classes, ids or directly on the HTML element.

```
.background, #background, body{  
background:#BB7A47 }
```

If only the background color should be changed can be used:

```
.background{ background-color:#BB7A47 }
```

This example shows the color as background, it is applied via the CSS property "background".

To optimize and compress your CSS code, you can use our [online CSS compressor and optimizer](#) based on csstidy. If you want to create a linear or radial gradient as background or border, check our [CSS Gradient Generator](#).

Hey! You found this booklet interesting? Support Converting Colors with the new Membership Option!

The pro membership hides all ads, plus gives you double the colors in the color bucket, and more awesome pro features!

[Learn more, Memberships starting at \\$2.50/m!](#)

**Follow me
on Twitter!**

@ConvertingColor