

Converting Colors

Hex(BB7A7D)

Have a look what the booklet for
Hex(BB7A7D) contains.

Hex(BB7A7D)	3
<i>Conversions</i>	4
<i>Details</i>	6
<i>Harmonies</i>	11
<i>Previews</i>	23
<i>Color Blindness Simulation</i>	26
<i>CSS Examples</i>	29

Color

Hex(BB7A7D)

Conversions

Conversions Part 1

Format	Color
Hex	BB7A7D
RGB	187, 122, 125
RGB Percent	73%, 48%, 49%
CMY	0.2667, 0.5216, 0.5098
CMYK	0.00, 0.35, 0.33, 0.27
HSL	357°, 32%, 61%
HSV	357°, 35%, 73%
XYZ	31.1547, 25.9645, 22.7717
YIQ	141.7770, 37.7770, 14.7130

Conversions

Conversions Part 2

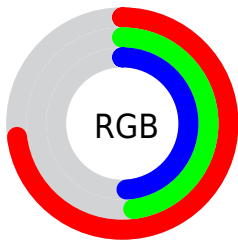
Format	Color
R_{YB}	187, 122, 125
Decimal	12286589
CIE Lab	58.00, 25.77, 8.88
CIE LCh	58, 27.251, 19.009
Yxy	25.9645, 0.3900, 0.3250
Android (android.graphics.Color)	4290476669 (0xFFBB7A7D)
YUV	141.7770, -8.2711, 39.6606
Hunter-Lab	50.9554, 19.9650, 9.1724

Details

The Hex color **BB7A7D** is a dark color, and the websafe version is hex **996666**. A complement of this color would be **7ABBB8**, and the grayscale version is **8E8E8E**.

A 20% lighter version of the original color is **F5AFB2**, and **84484C** is the 20% darker color. If you saturate the color by 10%, you get **BB676B**, and if you desaturate by 10%, it is **BB8D8F**.

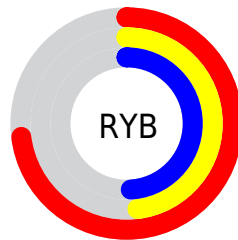
Distribution



Red (73%)

Green (48%)

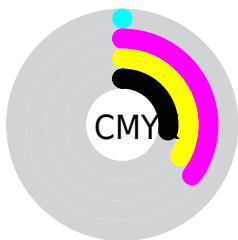
Blue (49%)



Red (73%)

Yellow (48%)

Blue (49%)

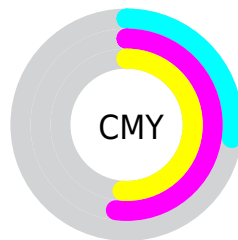


Cyan (0%)

Magenta (35%)

Yellow (33%)

Black (27%)



Cyan (27%)

Magenta (52%)

Yellow (51%)

Brightness & Saturation Gradients

These gradients show how the Hex color BB7A7D changes by changing the brightness by 10 percent. The first figure shows a shift by +10% for each color and the second figure -10%.

Similar to the brightness gradients but the following saturation gradients show a change of the Hex color BB7A7D by changing the saturation by 10% instead.

 BB7A7D

 BB7A7D

FFFFFF

 9F6164

 F5AFB2

 84484C

 FFCBCD

 693136

 FFE7E9

 4F1A20

 370309

 1F0001

 000000

 BB7A7D

 BB7A7D

 BB676B

 BB8D8F

 BB5559

 BB9FA1

 BB4247

 BBB2B3

 BB2F36

 BBC5C4

 BB1D24

 BBD8D6

 BB0A12

 BBFAE8

 BB0009

 BBFDFA

 BBFFFF

Harmonies

Analogous

The Analogous color harmony consists of three colors that are next to each other on the color wheel.



B57A95



BB7A7D



B57F68

Triad

The Triadic color harmony groups three colors that are evenly spaced from another and form a triangle on the color wheel.



BB7A7D



71956B



5E90BA

Complementary

The Complementary color scheme is a pair of colors which are on the opposite of each other on the color wheel.



BB7A7D



7ABBB8

Split Complementary

Split-complementary colors differ from the complementary color scheme. The scheme consists of three colors, the original color and two neighbors of the complement color.



4196AF



BB7A7D



559882

Square

The Square scheme is like the rectangle color scheme, but the four colors are evenly spaced on the color wheel.



BB7A7D



8C8F5E



3F989A



8288B8

Rectangle

The Rectangle color scheme consists of four colors that form a rectangle on the color wheel.



BB7A7D



AA845F



3F989A



5392B7

Sweetspot

The Sweet Spot groups the original color and five complimentary colors.



BB7A7D



F2DADB



B87ABB



7A6C6C



FAFAFA



7A7A7A

Same Dimension

The Same Dimension uses a secret algorithm to generate beautiful new colors.



BB7A7D



F28D91



BB977A



5E5555



9E0007



1F0001

Inverse Universe

The Inverse Universe completely reimagines the original color for something new.



BB7A7D



F28D91



7A9EBB



5E5555



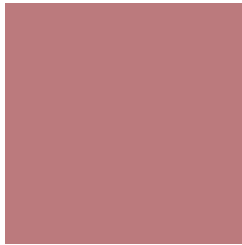
9E0007



1F0001

Previews

White Background



This preview shows how the Hex color BB7A7D looks on a white background.

Color Contrast Check

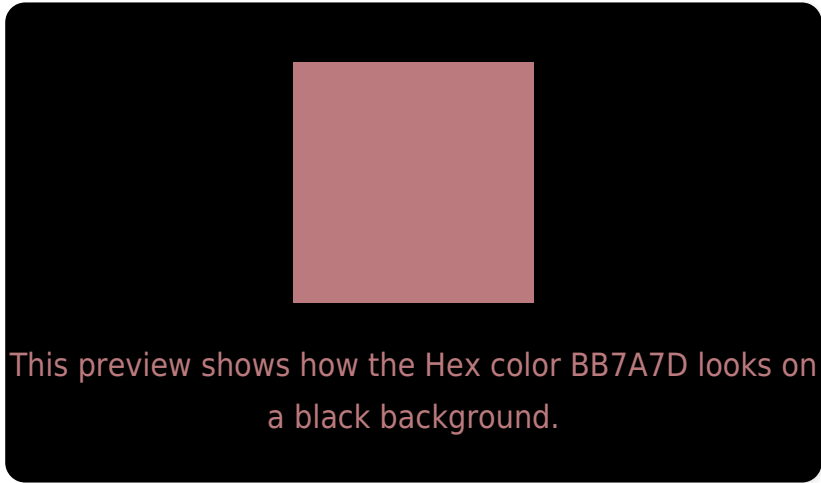
Large Text (above 18pt) WCAG AA ✓ Pass

Any Text WCAG AA × Fail

Large Text (above 18pt) WCAG AAA × Fail

Any Text WCAG AAA × Fail

Black Background



Color Contrast Check

Large Text (above 18pt) WCAG AA ✓ Pass

Any Text WCAG AA ✓ Pass

Large Text (above 18pt) WCAG AAA ✓ Pass

Any Text WCAG AAA × Fail

If you want to check with other color combinations, try the [Color Contrast Checker](#).

Hex BB7A7D Background



This preview shows how black text looks on a background with the Hex color BB7A7D.



This preview shows how white text looks on a background with the Hex color BB7A7D.

Color Blindness Simulation

Color vision deficiency is a very complex topic, and I could not describe the different causes any better than Wikipedia does, so if you want to learn more, you should check out their [article about color blindness](#).

Dichromacy





Tritanopia
BC7982

Trichromacy



Original Color
BB7A7D

Protanomaly
A08583

Deuteranomaly
A9827C

Tritanomaly
BC7980

Monochromacy



Original Color
BB7A7D

Achromatopsia
8E8E8E

Achromatomaly
9E8788

CSS Examples

Text

The CSS property to change the color of the text to Hex BB7A7D is called "color". The color property can be set on classes, ids or directly on the HTML element.

This example shows how text in the color #BB7A7D looks like.

```
.text, #text, p{  
    color:#BB7A7D  
}
```

If you want to add a text shadow in that color use the text-shadow property, you can generate a text shadow directly with our [CSS Text Shadow Generator](#).

Here you see how black text with a 4 pixel #BB7A7D colored shadow looks like.

```
.shadow{ text-shadow: 4px 4px 2px #BB7A7D  
}
```

Border

The CSS property to change the border of an element to Hex BB7A7D is called "border". The border property can be set on classes, ids or directly on the HTML element.

This example shows the color as border, it can be applied via the CSS property "border" or "border-color".

```
.border, #border, table{ border:4px solid  
#BB7A7D }
```

If only the border color should be changed use the property `border-color`.

```
.border{ border-color:#BB7A7D }
```

If you want to add a box shadow in that color use:

Here you see how a box with a 4 pixel #BB7A7D colored shadow looks like.

```
.boxshadow{ -moz-box-shadow:4px 4px 4px  
4px #BB7A7D; -webkit-box-shadow:4px 4px  
4px 4px #BB7A7D; box-shadow:4px 4px 4px  
4px #BB7A7D }
```

Background

The CSS property to change the background color of an element to Hex BB7A7D is called "background". The background property can be set on classes, ids or directly on the HTML element.

```
.background, #background, body{  
background:#BB7A7D }
```

If only the background color should be changed can be used:

```
.background{ background-color:#BB7A7D }
```

This example shows the color as background, it is applied via the CSS property "background".

To optimize and compress your CSS code, you can use our [online CSS compressor and optimizer](#) based on csstidy. If you want to create a linear or radial gradient as background or border, check our [CSS Gradient Generator](#).

Hey! You found this booklet interesting? Support Converting Colors with the new Membership Option!

The pro membership hides all ads, plus gives you double the colors in the color bucket, and more awesome pro features!

[Learn more, Memberships starting at \\$2.50/m!](#)

**Follow me
on Twitter!**

@ConvertingColor