

Converting Colors

Hex(BB7C4C)

Have a look what the booklet for
Hex(BB7C4C) contains.

Hex(BB7C4C)	3
<i>Conversions</i>	4
<i>Details</i>	6
<i>Harmonies</i>	11
<i>Previews</i>	23
<i>Color Blindness Simulation</i>	26
<i>CSS Examples</i>	29

Color

Hex(BB7C4C)

Conversions

Conversions Part 1

Format	Color
Hex	BB7C4C
RGB	187, 124, 76
RGB Percent	73%, 49%, 30%
CMY	0.2667, 0.5137, 0.7020
CMYK	0.00, 0.34, 0.59, 0.27
HSL	26°, 45%, 52%
HSV	26°, 59%, 73%
XYZ	29.0057, 25.5019, 10.2311
YIQ	137.3650, 52.9560, -1.5720

Conversions

Conversions Part 2

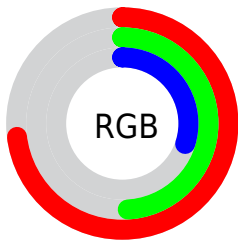
Format	Color
RYB	187, 161, 76
Decimal	12287052
CIELab	57.56, 19.55, 35.90
CIElCh	58, 40.884, 61.426
Yxy	25.5019, 0.4480, 0.3939
Android (android.graphics.Color)	4290477132 (0xFFBB7C4C)
YUV	137.3650, -30.2529, 43.5299
Hunter-Lab	50.4994, 14.1523, 23.3376

Details

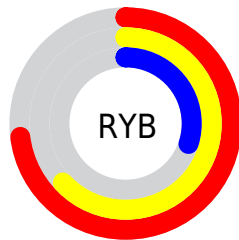
The Hex color **BB7C4C** is a dark color, and the websafe version is hex **996633**. A complement of this color would be **4C8BBB**, and the grayscale version is **8A8A8A**.

A 20% lighter version of the original color is **F6B17E**, and **824B1D** is the 20% darker color. If you saturate the color by 10%, you get **BB7139**, and if you desaturate by 10%, it is **BB875F**.

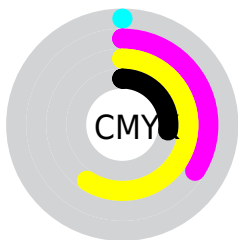
Distribution



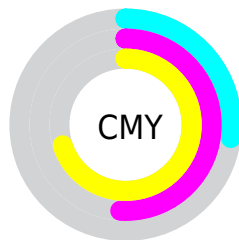
- Red (73%)
- Green (49%)
- Blue (30%)



- Red (73%)
- Yellow (63%)
- Blue (30%)



- Cyan (0%)
- Magenta (34%)
- Yellow (59%)
- Black (27%)



- Cyan (27%)
- Magenta (51%)
- Yellow (70%)

Brightness & Saturation Gradients

These gradients show how the Hex color BB7C4C changes by changing the brightness by 10 percent. The first figure shows a shift by +10% for each color and the second figure -10%.

Similar to the brightness gradients but the following saturation gradients show a change of the Hex color BB7C4C by changing the saturation by 10% instead.

 BB7C4C

 BB7C4C

FFFFFF

 9E6334

 F6B17E

 824B1D

 FFCC98

 663405

 FFE9B3

 4C1E00

 FFFFCF

 310900

 FFFFEB

 140000

 000000

 BB7C4C

 BB7C4C

 BB7139

 BB875F

 BB6727

 BB9171

 BB5C14

 BB9C84

 BB5201

 BBA697

 BB5100

 BBB1AA

 BBBCBC

 BBC6CF

 BBD1E2

 BBDCF4

Harmonies

Analogous

The Analogous color harmony consists of three colors that are next to each other on the color wheel.



CC7167



BB7C4C



9E8941

Triad

The Triadic color harmony groups three colors that are evenly spaced from another and form a triangle on the color wheel.



BB7C4C



009D8B



8F80C7

Complementary

The Complementary color scheme is a pair of colors which are on the opposite of each other on the color wheel.



BB7C4C



4C8BBB

Split Complementary

Split-complementary colors differ from the complementary color scheme. The scheme consists of three colors, the original color and two neighbors of the complement color.



508DD1



BB7C4C



009CAE

Square

The Square scheme is like the rectangle color scheme, but the four colors are evenly spaced on the color wheel.



BB7C4C



4C9A67



0097C8



B873AD

Rectangle

The Rectangle color scheme consists of four colors that form a rectangle on the color wheel.



BB7C4C



869045



0097C8



7D85CD

Sweetspot

The Sweet Spot groups the original color and five complimentary colors.



BB7C4C



F2DAC7



BB4C8D



7A6B5F



FAFAFA



7A7A7A

Same Dimension

The Same Dimension uses a secret algorithm to generate beautiful new colors.



BB7C4C



F29146



BBB24C



5E5955



9E4400



1F0D00

Inverse Universe

The Inverse Universe completely reimagines the original color for something new.



4C8BBB



46A8F2



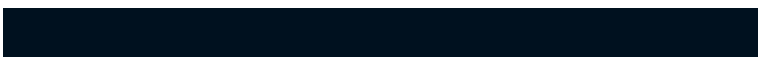
4C55BB



555A5E



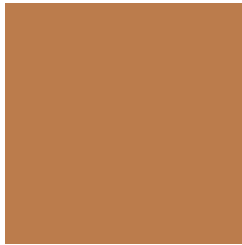
005A9E



00111F

Previews

White Background



This preview shows how the Hex color BB7C4C looks on a white background.

Color Contrast Check

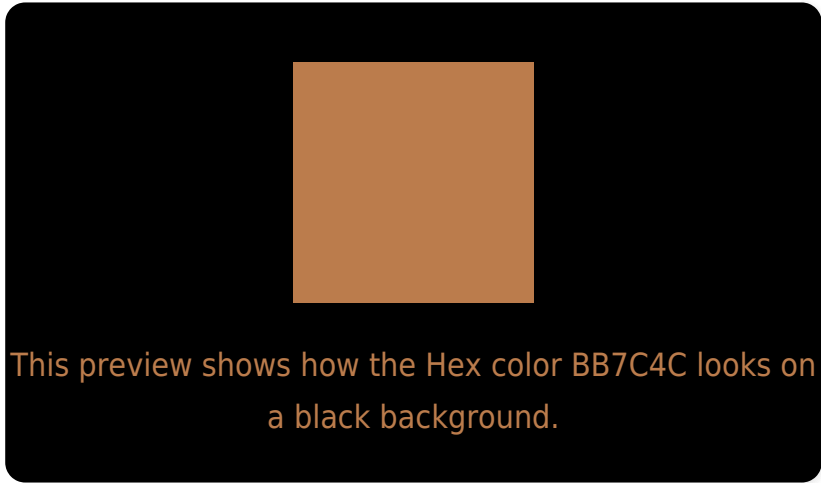
Large Text (above 18pt) WCAG AA ✓ Pass

Any Text WCAG AA × Fail

Large Text (above 18pt) WCAG AAA × Fail

Any Text WCAG AAA × Fail

Black Background



Color Contrast Check

Large Text (above 18pt) WCAG AA ✓ Pass

Any Text WCAG AA ✓ Pass

Large Text (above 18pt) WCAG AAA ✓ Pass

Any Text WCAG AAA × Fail

If you want to check with other color combinations, try the [Color Contrast Checker](#).

Hex BB7C4C Background



This preview shows how black text looks on a background with the Hex color BB7C4C.



This preview shows how white text looks on a background with the Hex color BB7C4C.

Color Blindness Simulation

Color vision deficiency is a very complex topic, and I could not describe the different causes any better than Wikipedia does, so if you want to learn more, you should check out their [article about color blindness](#).


Dichromacy



Original Color
BB7C4C

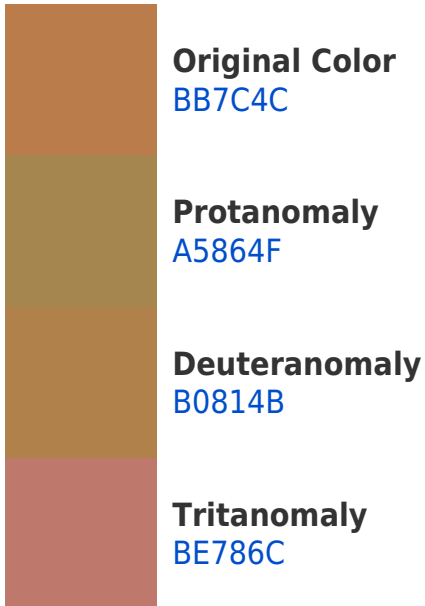
Protanopia
988B51

Deuteranopia
AA844A



Tritanopia
BF767F

Trichromacy



Monochromacy



CSS Examples

Text

The CSS property to change the color of the text to Hex BB7C4C is called "color". The color property can be set on classes, ids or directly on the HTML element.

This example shows how text in the color #BB7C4C looks like.

```
.text, #text, p{  
    color:#BB7C4C  
}
```

If you want to add a text shadow in that color use the text-shadow property, you can generate a text shadow directly with our [CSS Text Shadow Generator](#).

Here you see how black text with a 4 pixel #BB7C4C colored shadow looks like.

```
.shadow{ text-shadow: 4px 4px 2px #BB7C4C } }
```

Border

The CSS property to change the border of an element to Hex BB7C4C is called "border". The border property can be set on classes, ids or directly on the HTML element.

This example shows the color as border, it can be applied via the CSS property "border" or "border-color".

```
.border, #border, table{ border:4px solid #BB7C4C } }
```

If only the border color should be changed use the property `border-color`.

```
.border{ border-color:#BB7C4C }
```

If you want to add a box shadow in that color use:

Here you see how a box with a 4 pixel #BB7C4C colored shadow looks like.

```
.boxshadow{ -moz-box-shadow:4px 4px 4px  
4px #BB7C4C; -webkit-box-shadow:4px 4px  
4px 4px #BB7C4C; box-shadow:4px 4px 4px  
4px #BB7C4C }
```

Background

The CSS property to change the background color of an element to Hex BB7C4C is called "background". The background property can be set on classes, ids or directly on the HTML element.

```
.background, #background, body{  
background:#BB7C4C }
```

If only the background color should be changed can be used:

```
.background{ background-color:#BB7C4C }
```

This example shows the color as background, it is applied via the CSS property "background".

To optimize and compress your CSS code, you can use our [online CSS compressor and optimizer](#) based on csstidy. If you want to create a linear or radial gradient as background or border, check our [CSS Gradient Generator](#).

Hey! You found this booklet interesting? Support Converting Colors with the new Membership Option!

The pro membership hides all ads, plus gives you double the colors in the color bucket, and more awesome pro features!

[Learn more, Memberships starting at \\$2.50/m!](#)

**Follow me
on Twitter!**

@ConvertingColor