

# Converting Colors

Hex(BB7C7A)

Have a look what the booklet for  
Hex(BB7C7A) contains.

<b>Hex(BB7C7A)</b> .....	3
<b><i>Conversions</i></b> .....	4
<b><i>Details</i></b> .....	6
<b><i>Harmonies</i></b> .....	11
<b><i>Previews</i></b> .....	23
<b><i>Color Blindness Simulation</i></b> .....	26
<b><i>CSS Examples</i></b> .....	29

# Color

Hex(BB7C7A)

# Conversions

## Conversions Part 1

<b>Format</b>	<b>Color</b>
Hex	BB7C7A
RGB	187, 124, 122
RGB Percent	73%, 49%, 48%
CMY	0.2667, 0.5137, 0.5216
CMYK	0.00, 0.34, 0.35, 0.27
HSL	2°, 32%, 61%
HSV	2°, 35%, 73%
XYZ	31.2140, 26.3852, 21.8601
YIQ	142.6090, 38.1900, 12.7340

# Conversions

## Conversions Part 2

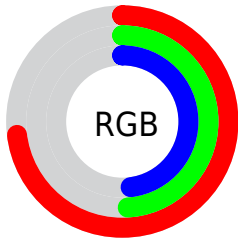
Format	Color
<a href="#">RYB</a>	<a href="#">187, 124, 122</a>
Decimal	<a href="#">12287098</a>
CIELab	<a href="#">58.40, 24.27, 11.17</a>
CIElCh	<a href="#">58, 26.716, 24.709</a>
Yxy	<a href="#">26.3852, 0.3928, 0.3321</a>
Android (android.graphics.Color)	<a href="#">4290477178</a> ( <a href="#">0xFFBB7C7A</a> )
YUV	<a href="#">142.6090, -10.1602, 38.9309</a>
Hunter-Lab	<a href="#">51.3666, 18.5780, 10.7246</a>

# Details

The Hex color **BB7C7A** is a dark color, and the websafe version is hex **996666**. A complement of this color would be **7AB9BB**, and the grayscale version is **8F8F8F**.

A 20% lighter version of the original color is **F5B1AE**, and **844A49** is the 20% darker color. If you saturate the color by 10%, you get **BB6A67**, and if you desaturate by 10%, it is **BB8E8D**.

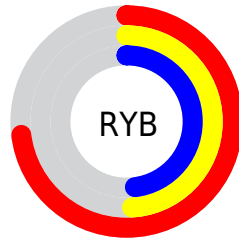
# Distribution



Red (73%)

Green (49%)

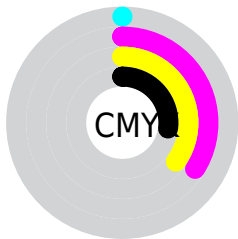
Blue (48%)



Red (73%)

Yellow (49%)

Blue (48%)

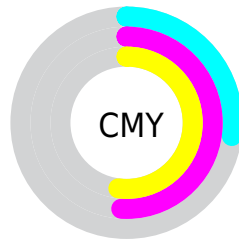


Cyan (0%)

Magenta (34%)

Yellow (35%)

Black (27%)



Cyan (27%)

Magenta (51%)

Yellow (52%)

# Brightness & Saturation Gradients

These gradients show how the Hex color BB7C7A changes by changing the brightness by 10 percent. The first figure shows a shift by +10% for each color and the second figure -10%.

Similar to the brightness gradients but the following saturation gradients show a change of the Hex color BB7C7A by changing the saturation by 10% instead.



 BB7C7A

 BB7C7A

FFFFFF

 9F6361

 F5B1AE

 844A49

 FFCDC A

 693333

 FFE9E6

 4F1C1E

 370505

 1F0001

 000000

 BB7C7A

 BB7C7A

 BB6A67

 BB8E8D

 BB5855

 BBA09F

 BB4642

 BBB2B2

 BB342F

 BBC4C5

 BB211D

 BBD7D8

 BB0F0A

 BBE9EA

 BB0600

 BBFBFD

 BBFFFF

# Harmonies

## Analogous

The Analogous color harmony consists of three colors that are next to each other on the color wheel.



B77B92



BB7C7A



B38267

# Triad

The Triadic color harmony groups three colors that are evenly spaced from another and form a triangle on the color wheel.



BB7C7A



6E9671



6790BB

# Complementary

The Complementary color scheme is a pair of colors which are on the opposite of each other on the color wheel.



BB7C7A



7AB9BB

# Split Complementary

Split-complementary colors differ from the complementary color scheme. The scheme consists of three colors, the original color and two neighbors of the complement color.



4996B2



BB7C7A



539987

# Square

The Square scheme is like the rectangle color scheme, but the four colors are evenly spaced on the color wheel.



BB7C7A



899161



41999F



8A88B7

# Rectangle

The Rectangle color scheme consists of four colors that form a rectangle on the color wheel.



BB7C7A



A78760



41999F



5C92B9

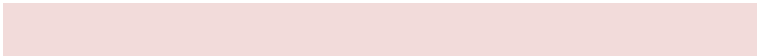


# Sweetspot

The Sweet Spot groups the original color and five complimentary colors.



BB7C7A



F2DBDA



BB7ABA



7A6C6C



FAFAFA



7A7A7A



# Same Dimension

The Same Dimension uses a secret algorithm to generate beautiful new colors.



BB7C7A



F2908D



BB9C7A



5E5555



9E0500



1F0100



# Inverse Universe

The Inverse Universe completely reimagines the original color for something new.



7AB9BB



8DEFF2



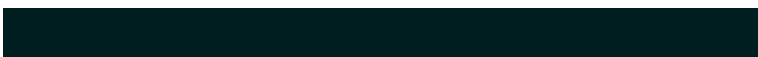
7A99BB



555E5E



00999E

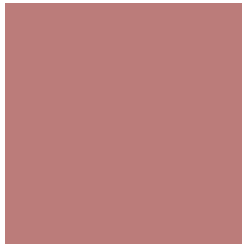


001E1F



# Previews

## White Background



This preview shows how the Hex color BB7C7A looks on a white background.

## Color Contrast Check

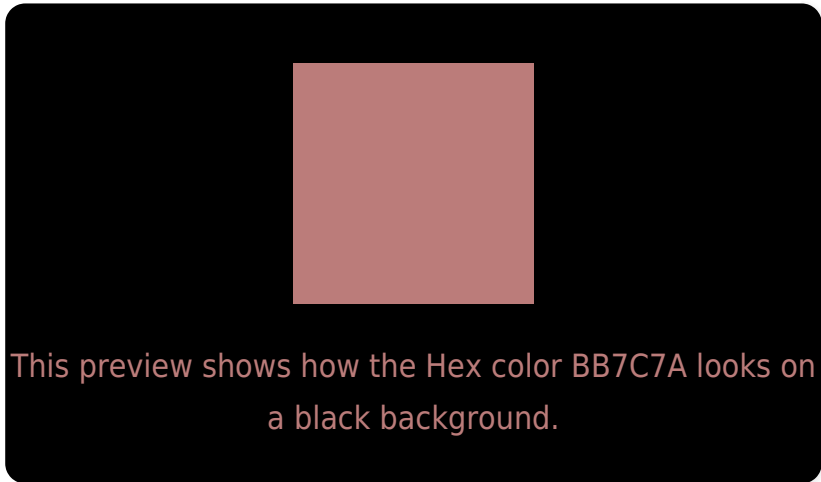
Large Text (above 18pt) WCAG AA ✓ Pass

Any Text WCAG AA × Fail

Large Text (above 18pt) WCAG AAA × Fail

Any Text WCAG AAA × Fail

# Black Background



## Color Contrast Check

Large Text (above 18pt) WCAG AA ✓ Pass

Any Text WCAG AA ✓ Pass

Large Text (above 18pt) WCAG AAA ✓ Pass

Any Text WCAG AAA × Fail

If you want to check with other color combinations, try the [Color Contrast Checker](#).



## Hex BB7C7A Background



This preview shows how black text looks on a background with the Hex color BB7C7A.



This preview shows how white text looks on a background with the Hex color BB7C7A.

# Color Blindness Simulation

Color vision deficiency is a very complex topic, and I could not describe the different causes any better than Wikipedia does, so if you want to learn more, you should check out their [article about color blindness](#).

## Dichromacy



**Original Color**  
BB7C7A

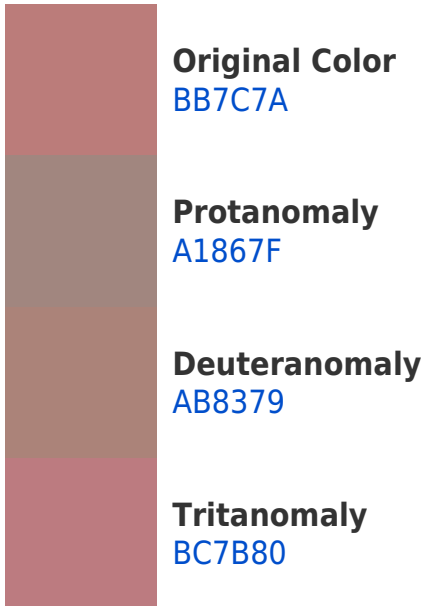
**Protanopia**  
928C82

**Deuteranopia**  
A28778

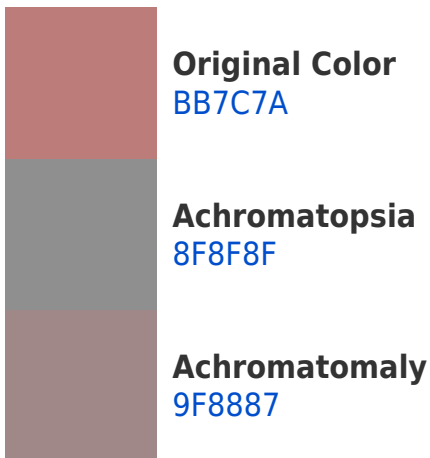


**Tritanopia**  
BC7A84

# Trichromacy



# Monochromacy



# CSS Examples

## Text

The CSS property to change the color of the text to Hex BB7C7A is called "color". The color property can be set on classes, ids or directly on the HTML element.

This example shows how text in the color #BB7C7A looks like.

```
.text, #text, p{  
    color:#BB7C7A  
}
```

If you want to add a text shadow in that color use the text-shadow property, you can generate a text shadow directly with our [CSS Text Shadow Generator](#).

Here you see how black text with a 4 pixel #BB7C7A colored shadow looks like.

```
.shadow{ text-shadow: 4px 4px 2px #BB7C7A
}
```

## Border

The CSS property to change the border of an element to Hex BB7C7A is called "border". The border property can be set on classes, ids or directly on the HTML element.

This example shows the color as border, it can be applied via the CSS property "border" or "border-color".

```
.border, #border, table{ border:4px solid
#BB7C7A }
```

If only the border color should be changed use the property `border-color`.

```
.border{ border-color:#BB7C7A }
```

If you want to add a box shadow in that color use:

Here you see how a box with a 4 pixel #BB7C7A colored shadow looks like.

```
.boxshadow{ -moz-box-shadow:4px 4px 4px  
4px #BB7C7A; -webkit-box-shadow:4px 4px  
4px 4px #BB7C7A; box-shadow:4px 4px 4px  
4px #BB7C7A }
```

# Background

The CSS property to change the background color of an element to Hex BB7C7A is called "background". The background property can be set on classes, ids or directly on the HTML element.

```
.background, #background, body{  
background:#BB7C7A }
```

If only the background color should be changed can be used:

```
.background{ background-color:#BB7C7A }
```

This example shows the color as background, it is applied via the CSS property "background".

To optimize and compress your CSS code, you can use our [online CSS compressor and optimizer](#) based on csstidy. If you want to create a linear or radial gradient as background or border, check our [CSS Gradient Generator](#).



Hey! You found this booklet interesting? Support Converting Colors with the new Membership Option!

The pro membership hides all ads, plus gives you double the colors in the color bucket, and more awesome pro features!

**[Learn more, Memberships starting at \\$2.50/m!](#)**

**Follow me  
on Twitter!**

@ConvertingColor