

# Converting Colors

Hex(BB8441)

Have a look what the booklet for  
Hex(BB8441) contains.

<b>Hex(BB8441)</b> .....	3
<b><i>Conversions</i></b> .....	4
<b><i>Details</i></b> .....	6
<b><i>Harmonies</i></b> .....	11
<b><i>Previews</i></b> .....	23
<b><i>Color Blindness Simulation</i></b> .....	26
<b><i>CSS Examples</i></b> .....	29

**Color**

**Hex(BB8441)**

# Conversions

## Conversions Part 1

<b>Format</b>	<b>Color</b>
Hex	BB8441
RGB	187, 132, 65
RGB Percent	73%, 52%, 25%
CMY	0.2667, 0.4824, 0.7451
CMYK	0.00, 0.29, 0.65, 0.27
HSL	33°, 48%, 49%
HSV	33°, 65%, 73%
XYZ	29.6989, 27.4490, 8.7339
YIQ	140.8070, 54.2870, -9.1770

# Conversions

## Conversions Part 2

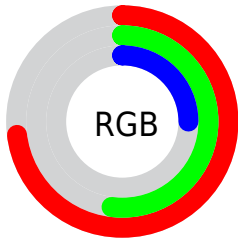
<b>Format</b>	<b>Color</b>
<b>RYB</b>	165, 187, 65
Decimal	12289089
CIELab	59.39, 14.34, 43.72
CIElCh	59, 46.017, 71.839
Yxy	27.4490, 0.4508, 0.4166
Android (android.graphics.Color)	4290479169 (0xFFBB8441)
YUV	140.8070, -37.3729, 40.5113
Hunter-Lab	52.3918, 9.4993, 26.7904

# Details

The Hex color **BB8441** is a dark color, and the websafe version is hex **CC9966**. A complement of this color would be **4178BB**, and the grayscale version is **8D8D8D**.

A 20% lighter version of the original color is **F6B973**, and **82530F** is the 20% darker color. If you saturate the color by 10%, you get **BB7C2E**, and if you desaturate by 10%, it is **BB8C54**.

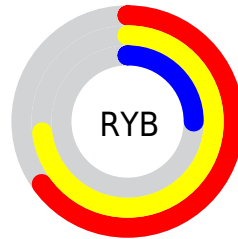
# Distribution



Red (73%)

Green (52%)

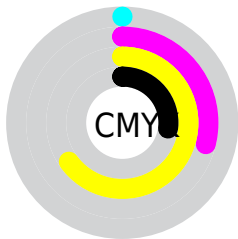
Blue (25%)



Red (65%)

Yellow (73%)

Blue (25%)

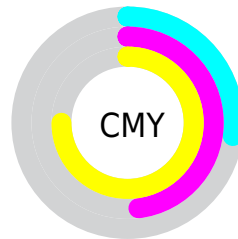


Cyan (0%)

Magenta (29%)

Yellow (65%)

Black (27%)



Cyan (27%)

Magenta (48%)

Yellow (75%)

# Brightness & Saturation Gradients

These gradients show how the Hex color BB8441 changes by changing the brightness by 10 percent. The first figure shows a shift by +10% for each color and the second figure -10%.

Similar to the brightness gradients but the following saturation gradients show a change of the Hex color BB8441 by changing the saturation by 10% instead.





BB8441



BB8441

FFFFFF



9E6B29



F6B973



82530F



FFD58E



663B00



FFF1A8



4B2600



FFFFC4



311100



FFFFE0



180001

FFFFFFD



000000



BB8441



BB8441



BB7C2E



BB8C54

 BB731C

 BB9566

 BB6B09

 BB9D79

 BB6700

 BBA68C

 BBAE9E

 BBB7B1

 BBBFC4

 BBC7D7

 BBD0E9

# Harmonies

## Analogous

The Analogous color harmony consists of three colors that are next to each other on the color wheel.



D3755B



BB8441



97923C

# Triad

The Triadic color harmony groups three colors that are evenly spaced from another and form a triangle on the color wheel.



BB8441



00A39E



A77ECC

# Complementary

The Complementary color scheme is a pair of colors which are on the opposite of each other on the color wheel.



BB8441



4178BB

# Split Complementary

Split-complementary colors differ from the complementary color scheme. The scheme consists of three colors, the original color and two neighbors of the complement color.



678EDE



BB8441



00A1C4

# Square

The Square scheme is like the rectangle color scheme, but the four colors are evenly spaced on the color wheel.



BB8441



28A274



009ADB



CD70A9

# Rectangle

The Rectangle color scheme consists of four colors that form a rectangle on the color wheel.



BB8441



7B9947



009ADB



9583D4



# Sweetspot

The Sweet Spot groups the original color and five complimentary colors.



BB8441



F2DCC2



BB417A



7A6D5D



FAFAFA



7A7A7A



# Same Dimension

The Same Dimension uses a secret algorithm to generate beautiful new colors.



BB8441



F29D35



B7BB41



5E5A55



9E5700



1F1100



# Inverse Universe

The Inverse Universe completely reimagines the original color for something new.



4178BB



358AF2



4541BB



55595E



00479E

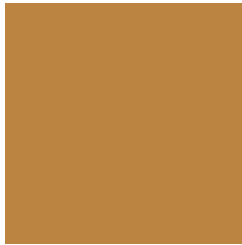


000E1F



# Previews

## White Background



This preview shows how the Hex color BB8441 looks on a white background.

## Color Contrast Check

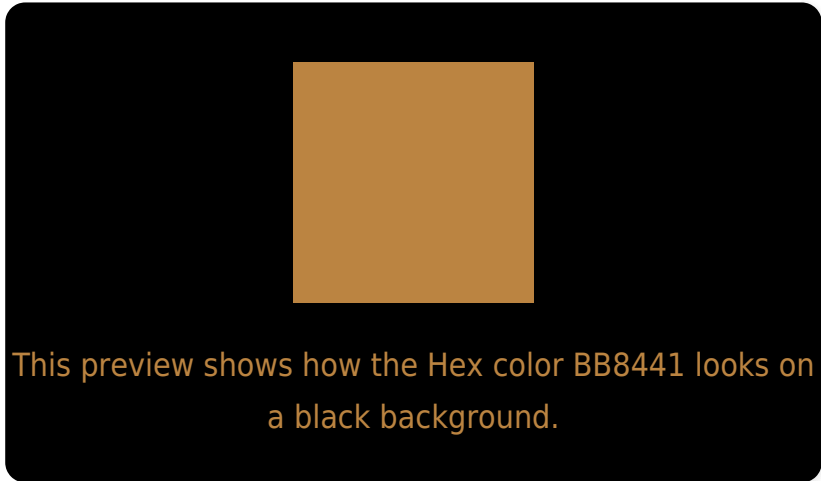
Large Text (above 18pt) WCAG AA ✓ Pass

Any Text WCAG AA × Fail

Large Text (above 18pt) WCAG AAA × Fail

Any Text WCAG AAA × Fail

# Black Background



## Color Contrast Check

Large Text (above 18pt) WCAG AA ✓ Pass

Any Text WCAG AA ✓ Pass

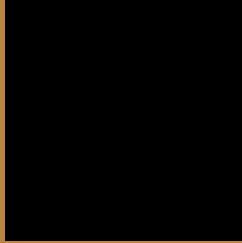
Large Text (above 18pt) WCAG AAA ✓ Pass

Any Text WCAG AAA × Fail

If you want to check with other color combinations, try the [Color Contrast Checker](#).



## Hex BB8441 Background



This preview shows how black text looks on a background with the Hex color BB8441.

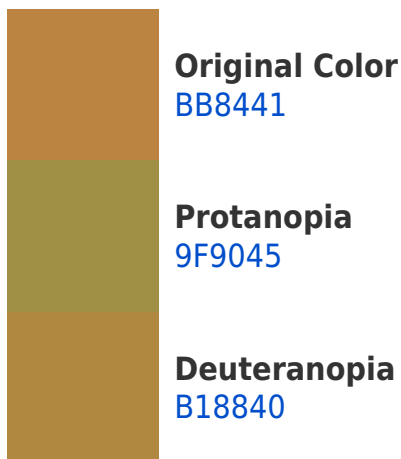



This preview shows how white text looks on a background with the Hex color BB8441.

# Color Blindness Simulation

Color vision deficiency is a very complex topic, and I could not describe the different causes any better than Wikipedia does, so if you want to learn more, you should check out their [article about color blindness](#).

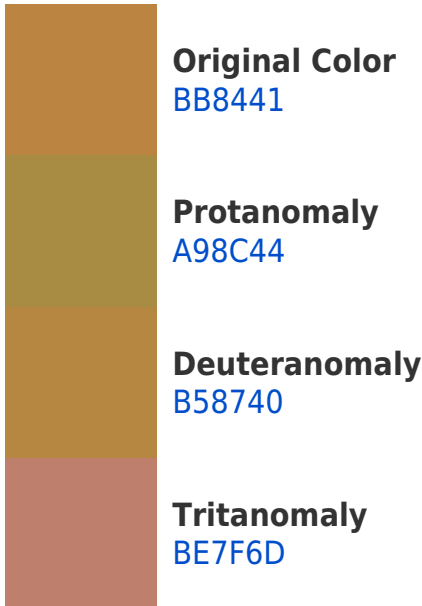
## Dichromacy





**Tritanopia**  
C07C86

# Trichromacy



# Monochromacy



# CSS Examples

## Text

The CSS property to change the color of the text to Hex BB8441 is called "color". The color property can be set on classes, ids or directly on the HTML element.

This example shows how text in the color #BB8441 looks like.

```
.text, #text, p{  
    color:#BB8441  
}
```

If you want to add a text shadow in that color use the text-shadow property, you can generate a text shadow directly with our [CSS Text Shadow Generator](#).

Here you see how black text with a 4 pixel #BB8441 colored shadow looks like.

```
.shadow{ text-shadow: 4px 4px 2px #BB8441
}
```

## Border

The CSS property to change the border of an element to Hex BB8441 is called "border". The border property can be set on classes, ids or directly on the HTML element.

This example shows the color as border, it can be applied via the CSS property "border" or "border-color".

```
.border, #border, table{ border:4px solid
#BB8441 }
```

If only the border color should be changed use the property `border-color`.

```
.border{ border-color:#BB8441 }
```

If you want to add a box shadow in that color use:

Here you see how a box with a 4 pixel #BB8441 colored shadow looks like.

```
.boxshadow{ -moz-box-shadow:4px 4px 4px  
4px #BB8441; -webkit-box-shadow:4px 4px  
4px 4px #BB8441; box-shadow:4px 4px 4px  
4px #BB8441 }
```

# Background

The CSS property to change the background color of an element to Hex BB8441 is called "background". The background property can be set on classes, ids or directly on the HTML element.

```
.background, #background, body{  
background:#BB8441 }
```

If only the background color should be changed can be used:

```
.background{ background-color:#BB8441 }
```

This example shows the color as background, it is applied via the CSS property "background".

To optimize and compress your CSS code, you can use our [online CSS compressor and optimizer](#) based on csstidy. If you want to create a linear or radial gradient as background or border, check our [CSS Gradient Generator](#).



Hey! You found this booklet interesting? Support Converting Colors with the new Membership Option!

The pro membership hides all ads, plus gives you double the colors in the color bucket, and more awesome pro features!

**[Learn more, Memberships starting at \\$2.50/m!](#)**

**Follow me  
on Twitter!**

@ConvertingColor