

Converting Colors

Hex(BB8B57)

Have a look what the booklet for
Hex(BB8B57) contains.

Hex(BB8B57)	3
<i>Conversions</i>	4
<i>Details</i>	6
<i>Harmonies</i>	11
<i>Previews</i>	23
<i>Color Blindness Simulation</i>	26
<i>CSS Examples</i>	29

Color

Hex(BB8B57)

Conversions

Conversions Part 1

Format	Color
Hex	BB8B57
RGB	187, 139, 87
RGB Percent	73%, 55%, 34%
CMY	0.2667, 0.4549, 0.6588
CMYK	0.00, 0.26, 0.53, 0.27
HSL	31°, 42%, 54%
HSV	31°, 53%, 73%
XYZ	31.4464, 29.7182, 13.0956
YIQ	147.4240, 45.3000, -5.9960

Conversions

Conversions Part 2

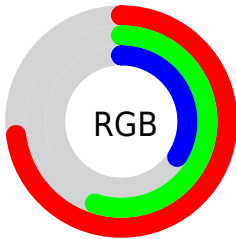
Format	Color
R_{YB}	179, 187, 87
Decimal	12290903
CIE _{Lab}	61.41, 12.15, 34.74
CIE _{LCh}	61, 36.807, 70.720
Yxy	29.7182, 0.4235, 0.4002
Android (android.graphics.Color)	4290480983 (0xFFBB8B57)
YUV	147.4240, -29.7890, 34.7082
Hunter-Lab	54.5144, 7.5670, 23.9172

Details

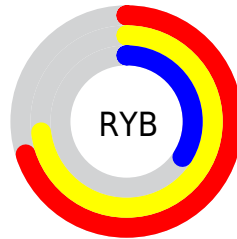
The Hex color **BB8B57** is a dark color, and the websafe version is hex **CC9966**. A complement of this color would be **5787BB**, and the grayscale version is **949494**.

A 20% lighter version of the original color is **F5C08A**, and **835928** is the 20% darker color. If you saturate the color by 10%, you get **BB8244**, and if you desaturate by 10%, it is **BB946A**.

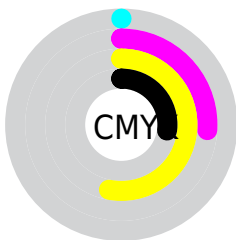
Distribution



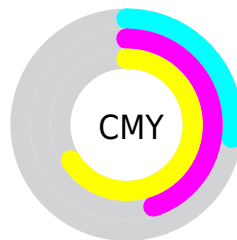
- Red (73%)
- Green (55%)
- Blue (34%)



- Red (70%)
- Yellow (73%)
- Blue (34%)



- Cyan (0%)
- Magenta (26%)
- Yellow (53%)
- Black (27%)



- Cyan (27%)
- Magenta (45%)
- Yellow (66%)

Brightness & Saturation Gradients

These gradients show how the Hex color BB8B57 changes by changing the brightness by 10 percent. The first figure shows a shift by +10% for each color and the second figure -10%.

Similar to the brightness gradients but the following saturation gradients show a change of the Hex color BB8B57 by changing the saturation by 10% instead.



BB8B57



BB8B57

FFFFFF



9F723F



F5C08A



835928



FFDCA4



684210



FFF9C0



4E2B00



FFFFDC



341700



FFFFFF9



1D0000



000000



BB8B57



BB8B57



BB8244



BB946A

 BB7932

 BB9D7C

 BB701F

 BBA68F

 BB670C

 BBAFA2

 BB6100

 BBB8B5

 BBC1C7

 BBCADA

 BBD3ED

 BBDCFF

Harmonies

Analogous

The Analogous color harmony consists of three colors that are next to each other on the color wheel.



CE806B



BB8B57



9E9653

Triad

The Triadic color harmony groups three colors that are evenly spaced from another and form a triangle on the color wheel.



BB8B57



0EA69F



A787C6

Complementary

The Complementary color scheme is a pair of colors which are on the opposite of each other on the color wheel.



BB8B57



5787BB

Split Complementary

Split-complementary colors differ from the complementary color scheme. The scheme consists of three colors, the original color and two neighbors of the complement color.



7794D4



BB8B57



00A4BE

Square

The Square scheme is like the rectangle color scheme, but the four colors are evenly spaced on the color wheel.



BB8B57



50A47E



389DD1



C67DAB

Rectangle

The Rectangle color scheme consists of four colors that form a rectangle on the color wheel.



BB8B57



879C5B



389DD1



998CCC

Sweetspot

The Sweet Spot groups the original color and five complimentary colors.



BB8B57



F2E0CB



BB5787



7A6F63



FAFAFA



7A7A7A

Same Dimension

The Same Dimension uses a secret algorithm to generate beautiful new colors.



BB8B57



F2A857



B9BB57



5E5A55



9E5200



1F1000

Inverse Universe

The Inverse Universe completely reimagines the original color for something new.



5787BB



57A2F2



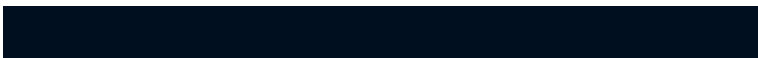
5957BB



55595E



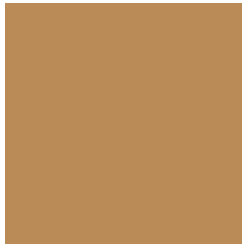
004C9E



000F1F

Previews

White Background



This preview shows how the Hex color BB8B57 looks on a white background.

Color Contrast Check

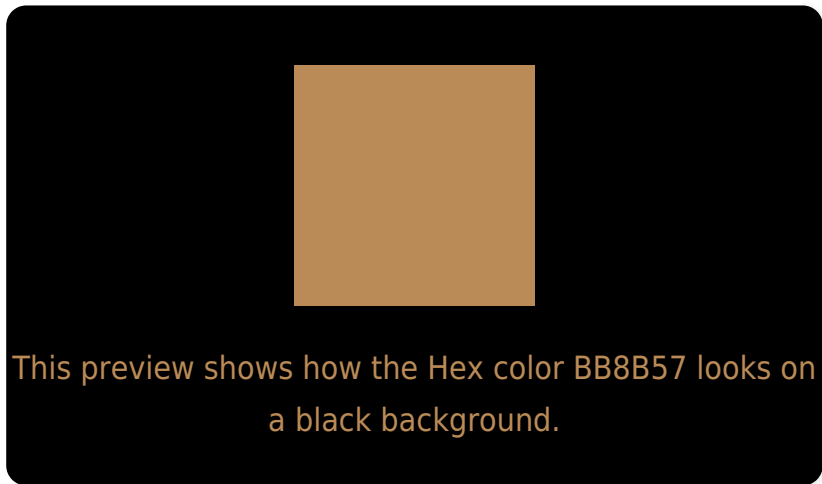
Large Text (above 18pt) WCAG AA ✓ Pass

Any Text WCAG AA × Fail

Large Text (above 18pt) WCAG AAA × Fail

Any Text WCAG AAA × Fail

Black Background



Color Contrast Check

Large Text (above 18pt) WCAG AA ✓ Pass

Any Text WCAG AA ✓ Pass

Large Text (above 18pt) WCAG AAA ✓ Pass

Any Text WCAG AAA × Fail

If you want to check with other color combinations, try the [Color Contrast Checker](#).

Hex BB8B57 Background



This preview shows how black text looks on a background with the Hex color BB8B57.



This preview shows how white text looks on a background with the Hex color BB8B57.

Color Blindness Simulation

Color vision deficiency is a very complex topic, and I could not describe the different causes any better than Wikipedia does, so if you want to learn more, you should check out their [article about color blindness](#).

Dichromacy



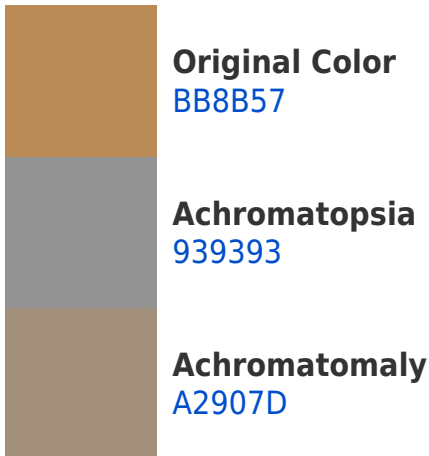


Tritanopia
C0848E

Trichromacy



Monochromacy



CSS Examples

Text

The CSS property to change the color of the text to Hex BB8B57 is called "color". The color property can be set on classes, ids or directly on the HTML element.

This example shows how text in the color #BB8B57 looks like.

```
.text, #text, p{  
    color:#BB8B57  
}
```

If you want to add a text shadow in that color use the text-shadow property, you can generate a text shadow directly with our [CSS Text Shadow Generator](#).

Here you see how black text with a 4 pixel #BB8B57 colored shadow looks like.

```
.shadow{ text-shadow: 4px 4px 2px #BB8B57  
}
```

Border

The CSS property to change the border of an element to Hex BB8B57 is called "border". The border property can be set on classes, ids or directly on the HTML element.

This example shows the color as border, it can be applied via the CSS property "border" or "border-color".

```
.border, #border, table{ border:4px solid  
#BB8B57 }
```

If only the border color should be changed use the property `border-color`.

```
.border{ border-color:#BB8B57 }
```

If you want to add a box shadow in that color use:

Here you see how a box with a 4 pixel #BB8B57 colored shadow looks like.

```
.boxshadow{ -moz-box-shadow:4px 4px 4px  
4px #BB8B57; -webkit-box-shadow:4px 4px  
4px 4px #BB8B57; box-shadow:4px 4px 4px  
4px #BB8B57 }
```

Background

The CSS property to change the background color of an element to Hex BB8B57 is called "background". The background property can be set on classes, ids or directly on the HTML element.

```
.background, #background, body{  
background:#BB8B57 }
```

If only the background color should be changed can be used:

```
.background{ background-color:#BB8B57 }
```

This example shows the color as background, it is applied via the CSS property "background".

To optimize and compress your CSS code, you can use our [online CSS compressor and optimizer](#) based on csstidy. If you want to create a linear or radial gradient as background or border, check our [CSS Gradient Generator](#).

Hey! You found this booklet interesting? Support Converting Colors with the new Membership Option!

The pro membership hides all ads, plus gives you double the colors in the color bucket, and more awesome pro features!

[Learn more, Memberships starting at \\$2.50/m!](#)

**Follow me
on Twitter!**

@ConvertingColor