

# Converting Colors

Hex(BB8C69)

Have a look what the booklet for  
Hex(BB8C69) contains.

<b>Hex(BB8C69)</b> .....	3
<b><i>Conversions</i></b> .....	4
<b><i>Details</i></b> .....	6
<b><i>Harmonies</i></b> .....	11
<b><i>Previews</i></b> .....	23
<b><i>Color Blindness Simulation</i></b> .....	26
<b><i>CSS Examples</i></b> .....	29

**Color**

**Hex(BB8C69)**

# Conversions

## Conversions Part 1

Format	Color
Hex	BB8C69
RGB	187, 140, 105
RGB Percent	73%, 55%, 41%
CMY	0.2667, 0.4510, 0.5882
CMYK	0.00, 0.25, 0.44, 0.27
HSL	26°, 38%, 57%
HSV	26°, 44%, 73%
XYZ	32.4214, 30.3409, 17.5122
YIQ	150.0630, 39.2470, -0.9210

# Conversions

## Conversions Part 2

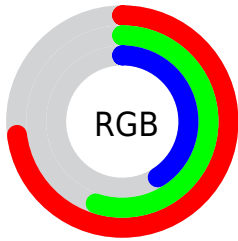
<b>Format</b>	<b>Color</b>
<b>RYB</b>	187, 166, 105
Decimal	12291177
CIELab	61.95, 13.38, 25.63
CIElCh	62, 28.907, 62.437
Yxy	30.3409, 0.4039, 0.3780
Android (android.graphics.Color)	4290481257 (0xFFBB8C69)
YUV	150.0630, -22.2161, 32.3937
Hunter-Lab	55.0826, 8.6700, 19.7080

# Details

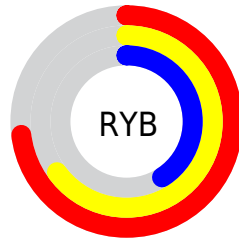
The Hex color **BB8C69** is a dark color, and the websafe version is hex **CC9966**. A complement of this color would be **6998BB**, and the grayscale version is **969696**.

A 20% lighter version of the original color is **F5C29D**, and **845A39** is the 20% darker color. If you saturate the color by 10%, you get **BB8156**, and if you desaturate by 10%, it is **BB977C**.

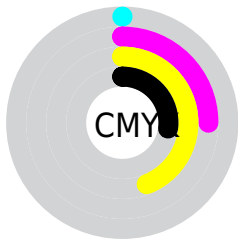
# Distribution



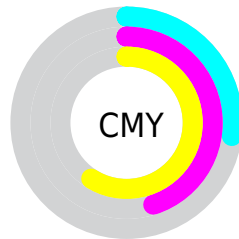
- Red (73%)
- Green (55%)
- Blue (41%)



- Red (73%)
- Yellow (65%)
- Blue (41%)



- Cyan (0%)
- Magenta (25%)
- Yellow (44%)
- Black (27%)



- Cyan (27%)
- Magenta (45%)
- Yellow (59%)

# Brightness & Saturation Gradients

These gradients show how the Hex color BB8C69 changes by changing the brightness by 10 percent. The first figure shows a shift by +10% for each color and the second figure -10%.

Similar to the brightness gradients but the following saturation gradients show a change of the Hex color BB8C69 by changing the saturation by 10% instead.





BB8C69



BB8C69

FFFFFF



9F7251



F5C29D



845A39



FFDEB8



694223



FFFAD3



4F2C0E



FFFFF0



371700



1F0000



000000



BB8C69



BB8C69



BB8156



BB977C

■ BB7744

■ BBA18E

■ BB6C31

■ BBACA1

■ BB611E

■ BBB7B4

■ BB560C

■ BBC2C7

■ BB5000

■ BBCCD9

■ BBD7EC

■ BBE2FF

■ BBECFF

# Harmonies

## Analogous

The Analogous color harmony consists of three colors that are next to each other on the color wheel.



C7857B



BB8C69



A59562

# Triad

The Triadic color harmony groups three colors that are evenly spaced from another and form a triangle on the color wheel.



BB8C69



4FA497



9C8EC1

# Complementary

The Complementary color scheme is a pair of colors which are on the opposite of each other on the color wheel.



BB8C69



6998BB

# Split Complementary

Split-complementary colors differ from the complementary color scheme. The scheme consists of three colors, the original color and two neighbors of the complement color.



7797C8



BB8C69



3FA3B0

# Square

The Square scheme is like the rectangle color scheme, but the four colors are evenly spaced on the color wheel.



BB8C69



6CA27D



519FC2



B886AE

# Rectangle

The Rectangle color scheme consists of four colors that form a rectangle on the color wheel.



BB8C69



949A66



519FC2



9091C5



# Sweetspot

The Sweet Spot groups the original color and five complimentary colors.



BB8C69



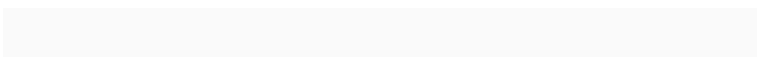
F2E0D3



BB6999



7A6F67



FAFAFA



7A7A7A



# Same Dimension

The Same Dimension uses a secret algorithm to generate beautiful new colors.



BB8C69



F2A972



BBB469



5E5955



9E4300



1F0D00



# Inverse Universe

The Inverse Universe completely reimagines the original color for something new.



6998BB



72BBF2



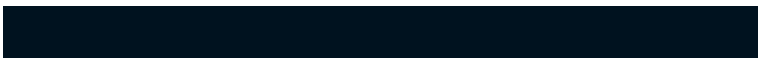
6970BB



555A5E



005B9E

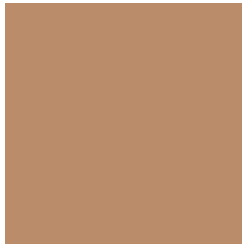


00121F



# Previews

## White Background



This preview shows how the Hex color BB8C69 looks on a white background.

## Color Contrast Check

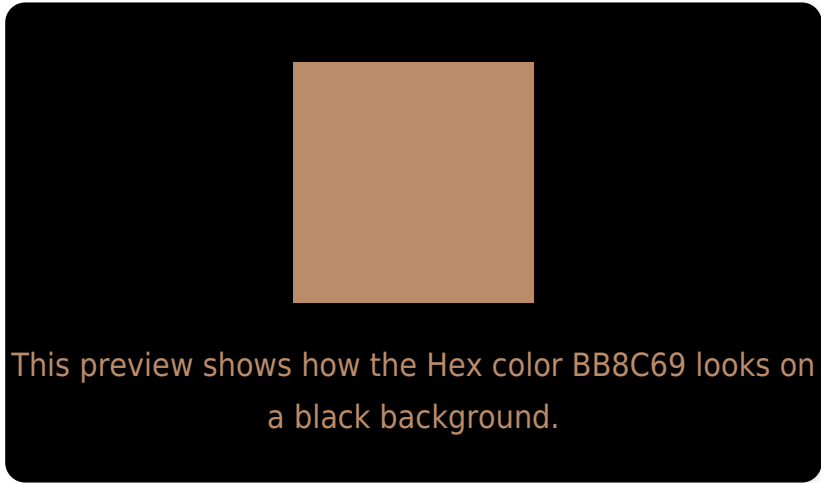
Large Text (above 18pt) WCAG AA × Fail

Any Text WCAG AA × Fail

Large Text (above 18pt) WCAG AAA × Fail

Any Text WCAG AAA × Fail

# Black Background



## Color Contrast Check

Large Text (above 18pt) WCAG AA ✓ Pass

Any Text WCAG AA ✓ Pass

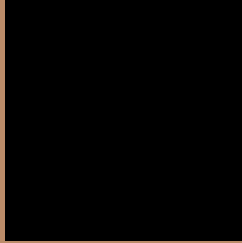
Large Text (above 18pt) WCAG AAA ✓ Pass

Any Text WCAG AAA ✓ Pass

If you want to check with other color combinations, try the [Color Contrast Checker](#).



## Hex BB8C69 Background



This preview shows how black text looks on a background with the Hex color BB8C69.



This preview shows how white text looks on a background with the Hex color BB8C69.

# Color Blindness Simulation

Color vision deficiency is a very complex topic, and I could not describe the different causes any better than Wikipedia does, so if you want to learn more, you should check out their [article about color blindness](#).

## Dichromacy



**Original Color**  
BB8C69

**Protanopia**  
A1966D

**Deuteranopia**  
B39068



**Tritanopia**  
BF8791

# Trichromacy



# Monochromacy



# CSS Examples

## Text

The CSS property to change the color of the text to Hex BB8C69 is called "color". The color property can be set on classes, ids or directly on the HTML element.

This example shows how text in the color #BB8C69 looks like.

```
.text, #text, p{  
    color:#BB8C69  
}
```

If you want to add a text shadow in that color use the text-shadow property, you can generate a text shadow directly with our [CSS Text Shadow Generator](#).

Here you see how black text with a 4 pixel #BB8C69 colored shadow looks like.

```
.shadow{ text-shadow: 4px 4px 2px #BB8C69
}
```

## Border

The CSS property to change the border of an element to Hex BB8C69 is called "border". The border property can be set on classes, ids or directly on the HTML element.

This example shows the color as border, it can be applied via the CSS property "border" or "border-color".

```
.border, #border, table{ border:4px solid
#BB8C69 }
```

If only the border color should be changed use the property `border-color`.

```
.border{ border-color:#BB8C69 }
```

If you want to add a box shadow in that color use:

Here you see how a box with a 4 pixel #BB8C69 colored shadow looks like.

```
.boxshadow{ -moz-box-shadow:4px 4px 4px  
4px #BB8C69; -webkit-box-shadow:4px 4px  
4px 4px #BB8C69; box-shadow:4px 4px 4px  
4px #BB8C69 }
```

# Background

The CSS property to change the background color of an element to Hex BB8C69 is called "background". The background property can be set on classes, ids or directly on the HTML element.

```
.background, #background, body{  
background:#BB8C69 }
```

If only the background color should be changed can be used:

```
.background{ background-color:#BB8C69 }
```

This example shows the color as background, it is applied via the CSS property "background".

To optimize and compress your CSS code, you can use our [online CSS compressor and optimizer](#) based on csstidy. If you want to create a linear or radial gradient as background or border, check our [CSS Gradient Generator](#).



Hey! You found this booklet interesting? Support Converting Colors with the new Membership Option!

The pro membership hides all ads, plus gives you double the colors in the color bucket, and more awesome pro features!

**[Learn more, Memberships starting at \\$2.50/m!](#)**

**Follow me  
on Twitter!**

@ConvertingColor