

Converting Colors

Hex(BB8C90)

Have a look what the booklet for
Hex(BB8C90) contains.

Hex(BB8C90)	3
<i>Conversions</i>	4
<i>Details</i>	6
<i>Harmonies</i>	11
<i>Previews</i>	23
<i>Color Blindness Simulation</i>	26
<i>CSS Examples</i>	29

Color

Hex(BB8C90)

Conversions

Conversions Part 1

Format	Color
Hex	BB8C90
RGB	187, 140, 144
RGB Percent	73%, 55%, 56%
CMY	0.2667, 0.4510, 0.4353
CMYK	0.00, 0.25, 0.23, 0.27
HSL	355°, 26%, 64%
HSV	355°, 25%, 73%
XYZ	34.9056, 31.3346, 30.5940
YIQ	154.5090, 26.7280, 11.2080

Conversions

Conversions Part 2

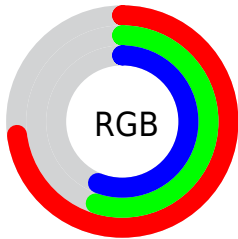
Format	Color
R_{YB}	187, 140, 144
Decimal	12291216
CIE _{Lab}	62.79, 18.45, 4.85
CIE _{LCh}	63, 19.078, 14.721
Yxy	31.3346, 0.3605, 0.3236
Android (android.graphics.Color)	4290481296 (0xFFBB8C90)
YUV	154.5090, -5.1809, 28.4946
Hunter-Lab	55.9773, 13.3466, 6.7796

Details

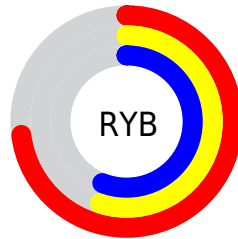
The Hex color **BB8C90** is a light color, and the websafe version is hex **CC9999**. A complement of this color would be **8CBBB7**, and the grayscale version is **9B9B9B**.

A 20% lighter version of the original color is **F4C2C6**, and **855A5E** is the 20% darker color. If you saturate the color by 10%, you get **BB797F**, and if you desaturate by 10%, it is **BB9FA1**.

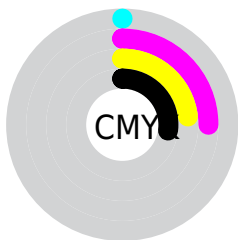
Distribution



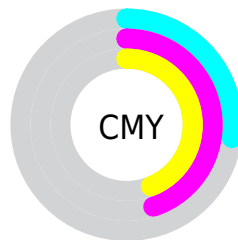
- Red (73%)
- Green (55%)
- Blue (56%)



- Red (73%)
- Yellow (55%)
- Blue (56%)



- Cyan (0%)
- Magenta (25%)
- Yellow (23%)
- Black (27%)



- Cyan (27%)
- Magenta (45%)
- Yellow (44%)

Brightness & Saturation Gradients

These gradients show how the Hex color BB8C90 changes by changing the brightness by 10 percent. The first figure shows a shift by +10% for each color and the second figure -10%.

Similar to the brightness gradients but the following saturation gradients show a change of the Hex color BB8C90 by changing the saturation by 10% instead.

 BB8C90

 BB8C90

FFFFFF

 A07276

 F4C2C6

 855A5E

 FFDEE2

 6B4246

 FFFAFE

 522B30

 3A161B

 260000

 000000

 BB8C90

 BB8C90

 BB797F

 BB9FA1

 BB676E

 BBB1B2

 BB545D

 BBC4C3

 BB414C

 BBD7D4

 BB2F3A

 BBFAE6

 BB1C29

 BBFCF7

 BB0918

 BBFFFF

 BB0010

Harmonies

Analogous

The Analogous color harmony consists of three colors that are next to each other on the color wheel.



B58DA1



BB8C90



B88F81

Triad

The Triadic color harmony groups three colors that are evenly spaced from another and form a triangle on the color wheel.



BB8C90



899E7F



799CB8

Complementary

The Complementary color scheme is a pair of colors which are on the opposite of each other on the color wheel.



BB8C90



8CBBB7

Split Complementary

Split-complementary colors differ from the complementary color scheme. The scheme consists of three colors, the original color and two neighbors of the complement color.



6BA0AF



BB8C90



77A18E

Square

The Square scheme is like the rectangle color scheme, but the four colors are evenly spaced on the color wheel.



BB8C90



9C9977



6AA2A0



8F97B8

Rectangle

The Rectangle color scheme consists of four colors that form a rectangle on the color wheel.



BB8C90



B1927A



6AA2A0



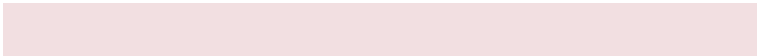
739EB6

Sweetspot

The Sweet Spot groups the original color and five complimentary colors.



BB8C90



F2DFE1



B68CBB



7A6E6F



FAFAFA



7A7A7A

Same Dimension

The Same Dimension uses a secret algorithm to generate beautiful new colors.



BB8C90



F2AAB0



BB9F8C



5E5556



9E000D



1F0003

Inverse Universe

The Inverse Universe completely reimagines the original color for something new.



BB8C90



F2AAB0



8CA8BB



5E5556



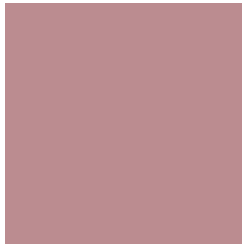
9E000D



1F0003

Previews

White Background



This preview shows how the Hex color BB8C90 looks on a white background.

Color Contrast Check

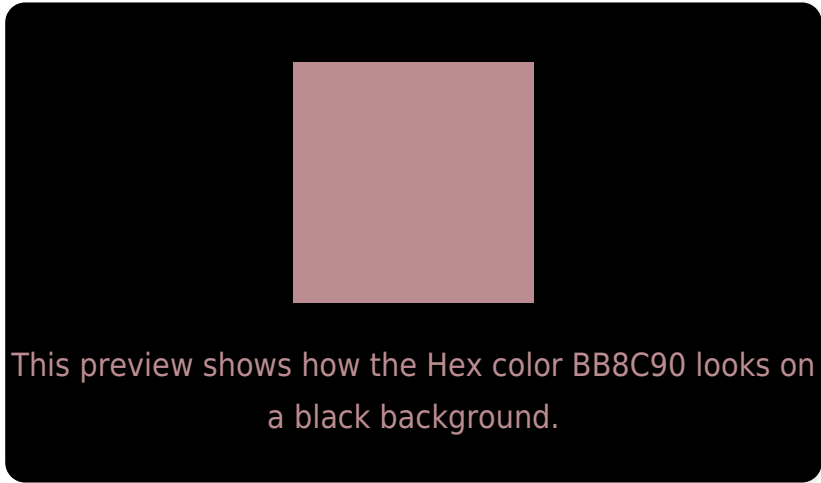
Large Text (above 18pt) WCAG AA × Fail

Any Text WCAG AA × Fail

Large Text (above 18pt) WCAG AAA × Fail

Any Text WCAG AAA × Fail

Black Background



Color Contrast Check

Large Text (above 18pt) WCAG AA ✓ Pass

Any Text WCAG AA ✓ Pass

Large Text (above 18pt) WCAG AAA ✓ Pass

Any Text WCAG AAA ✓ Pass

If you want to check with other color combinations, try the [Color Contrast Checker](#).

Hex BB8C90 Background



This preview shows how black text looks on a background with the Hex color BB8C90.



This preview shows how white text looks on a background with the Hex color BB8C90.

Color Blindness Simulation

Color vision deficiency is a very complex topic, and I could not describe the different causes any better than Wikipedia does, so if you want to learn more, you should check out their [article about color blindness](#).

Dichromacy



Original Color
BB8C90

Protanopia
9B9796

Deuteranopia
AA938F



Tritanopia
BC8B96

Trichromacy



Original Color
BB8C90

Protanomaly
A79394

Deuteranomaly
B0908F

Tritanomaly
BC8B94

Monochromacy



Original Color
BB8C90

Achromatopsia
9B9B9B

Achromatomaly
A79697

CSS Examples

Text

The CSS property to change the color of the text to Hex BB8C90 is called "color". The color property can be set on classes, ids or directly on the HTML element.

This example shows how text in the color #BB8C90 looks like.

```
.text, #text, p{  
    color:#BB8C90  
}
```

If you want to add a text shadow in that color use the text-shadow property, you can generate a text shadow directly with our [CSS Text Shadow Generator](#).

Here you see how black text with a 4 pixel #BB8C90 colored shadow looks like.

```
.shadow{ text-shadow: 4px 4px 2px #BB8C90
}
```

Border

The CSS property to change the border of an element to Hex BB8C90 is called "border". The border property can be set on classes, ids or directly on the HTML element.

This example shows the color as border, it can be applied via the CSS property "border" or "border-color".

```
.border, #border, table{ border:4px solid
#BB8C90 }
```

If only the border color should be changed use the property `border-color`.

```
.border{ border-color:#BB8C90 }
```

If you want to add a box shadow in that color use:

Here you see how a box with a 4 pixel #BB8C90 colored shadow looks like.

```
.boxshadow{ -moz-box-shadow:4px 4px 4px  
4px #BB8C90; -webkit-box-shadow:4px 4px  
4px 4px #BB8C90; box-shadow:4px 4px 4px  
4px #BB8C90 }
```

Background

The CSS property to change the background color of an element to Hex BB8C90 is called "background". The background property can be set on classes, ids or directly on the HTML element.

```
.background, #background, body{  
background:#BB8C90 }
```

If only the background color should be changed can be used:

```
.background{ background-color:#BB8C90 }
```

This example shows the color as background, it is applied via the CSS property "background".

To optimize and compress your CSS code, you can use our [online CSS compressor and optimizer](#) based on csstidy. If you want to create a linear or radial gradient as background or border, check our [CSS Gradient Generator](#).

Hey! You found this booklet interesting? Support Converting Colors with the new Membership Option!

The pro membership hides all ads, plus gives you double the colors in the color bucket, and more awesome pro features!

[Learn more, Memberships starting at \\$2.50/m!](#)

**Follow me
on Twitter!**

@ConvertingColor