

Converting Colors

Hex(BB8D8F)

Have a look what the booklet for
Hex(BB8D8F) contains.

Hex(BB8D8F)	3
<i>Conversions</i>	4
<i>Details</i>	6
<i>Harmonies</i>	11
<i>Previews</i>	23
<i>Color Blindness Simulation</i>	26
<i>CSS Examples</i>	29

Color

Hex(**BB8D8F**)

Conversions

Conversions Part 1

Format	Color
Hex	BB8D8F
RGB	187, 141, 143
RGB Percent	73%, 55%, 56%
CMY	0.2667, 0.4471, 0.4392
CMYK	0.00, 0.25, 0.24, 0.27
HSL	357°, 25%, 64%
HSV	357°, 25%, 73%
XYZ	34.9763, 31.5977, 30.2421
YIQ	154.9820, 26.7740, 10.3740

Conversions

Conversions Part 2

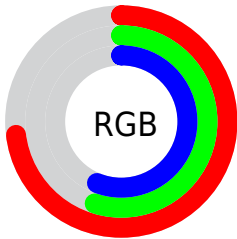
Format	Color
R_{YB}	187, 141, 143
Decimal	12291471
CIE _{Lab}	63.01, 17.75, 5.73
CIE _{LCh}	63, 18.648, 17.899
Yxy	31.5977, 0.3613, 0.3264
Android (android.graphics.Color)	4290481551 (0xFFBB8D8F)
YUV	154.9820, -5.9071, 28.0798
Hunter-Lab	56.2118, 12.6961, 7.4501

Details

The Hex color **BB8D8F** is a light color, and the websafe version is hex **CC9999**. A complement of this color would be **8DBBB9**, and the grayscale version is **9B9B9B**.

A 20% lighter version of the original color is **F4C3C5**, and **855B5D** is the 20% darker color. If you saturate the color by 10%, you get **BB7A7D**, and if you desaturate by 10%, it is **BBA0A1**.

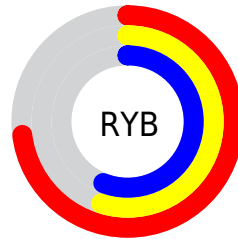
Distribution



Red (73%)

Green (55%)

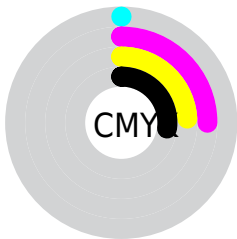
Blue (56%)



Red (73%)

Yellow (55%)

Blue (56%)

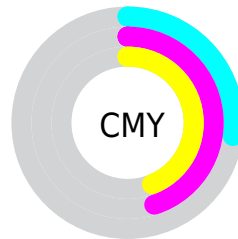


Cyan (0%)

Magenta (25%)

Yellow (24%)

Black (27%)



Cyan (27%)

Magenta (45%)

Yellow (44%)

Brightness & Saturation Gradients

These gradients show how the Hex color BB8D8F changes by changing the brightness by 10 percent. The first figure shows a shift by +10% for each color and the second figure -10%.

Similar to the brightness gradients but the following saturation gradients show a change of the Hex color BB8D8F by changing the saturation by 10% instead.

 BB8D8F

 BB8D8F

FFFFFF

 A07375

 F4C3C5

 855B5D

 FFD FE1

 6B4345

 FFFCFD

 522C2F

 3A171A

 260000

 000000

 BB8D8F

 BB8D8F

 BB7A7D

 BBA0A1

 BB686B

 BBB2B3

 BB5559

 BBC5C5

 BB4247

 BBD8D7

 BB3036

 BBEBE8

 BB1D24

 BBFDFA

 BB0A12

 BBFFFF

 BB0008

Harmonies

Analogous

The Analogous color harmony consists of three colors that are next to each other on the color wheel.



B68DA0



BB8D8F



B79081

Triad

The Triadic color harmony groups three colors that are evenly spaced from another and form a triangle on the color wheel.



BB8D8F



889F82



7D9CB8

Complementary

The Complementary color scheme is a pair of colors which are on the opposite of each other on the color wheel.



BB8D8F



8DBBB9

Split Complementary

Split-complementary colors differ from the complementary color scheme. The scheme consists of three colors, the original color and two neighbors of the complement color.



6EA0B0



BB8D8F



76A291

Square

The Square scheme is like the rectangle color scheme, but the four colors are evenly spaced on the color wheel.



BB8D8F



9B9B79



6CA2A2



9397B8

Rectangle

The Rectangle color scheme consists of four colors that form a rectangle on the color wheel.



BB8D8F



B0937A



6CA2A2



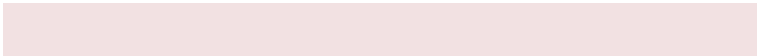
779EB7

Sweetspot

The Sweet Spot groups the original color and five complimentary colors.



BB8D8F



F2E1E2



B98DBB



7A7171



FAFAFA



7A7A7A

Same Dimension

The Same Dimension uses a secret algorithm to generate beautiful new colors.



BB8D8F



F2AAAD



BBA28D



5E5555



9E0007



1F0001

Inverse Universe

The Inverse Universe completely reimagines the original color for something new.



BB8D8F



F2AAAD



8DA6BB



5E5555



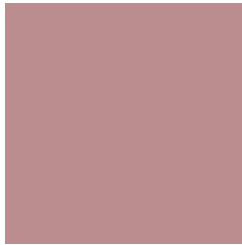
9E0007



1F0001

Previews

White Background



This preview shows how the Hex color BB8D8F looks on a white background.

Color Contrast Check

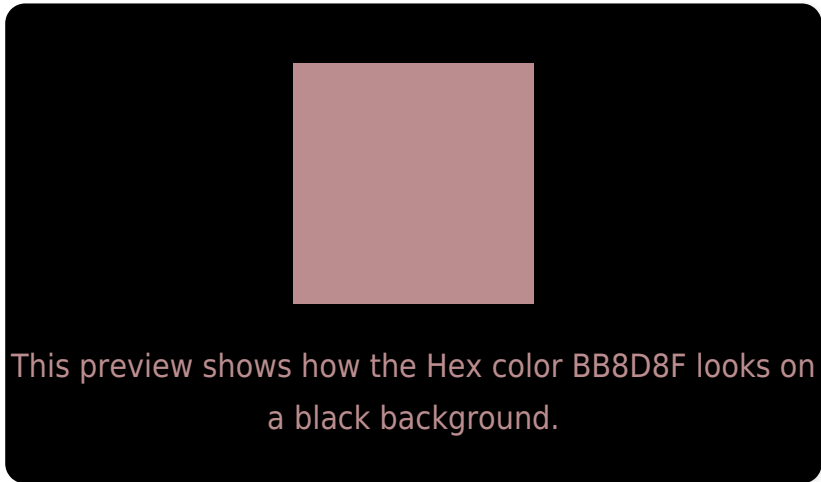
Large Text (above 18pt) WCAG AA × Fail

Any Text WCAG AA × Fail

Large Text (above 18pt) WCAG AAA × Fail

Any Text WCAG AAA × Fail

Black Background



Color Contrast Check

Large Text (above 18pt) WCAG AA ✓ Pass

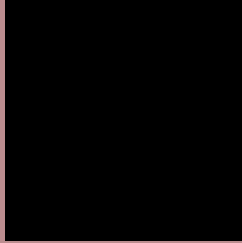
Any Text WCAG AA ✓ Pass

Large Text (above 18pt) WCAG AAA ✓ Pass

Any Text WCAG AAA ✓ Pass

If you want to check with other color combinations, try the [Color Contrast Checker](#).

Hex BB8D8F Background



This preview shows how black text looks on a background with the Hex color BB8D8F.



This preview shows how white text looks on a background with the Hex color BB8D8F.

Color Blindness Simulation

Color vision deficiency is a very complex topic, and I could not describe the different causes any better than Wikipedia does, so if you want to learn more, you should check out their [article about color blindness](#).

Dichromacy



Original Color
BB8D8F

Protanopia
9C9895

Deuteranopia
AC938E



Tritanopia
BC8C97

Trichromacy



Original Color
BB8D8F

Protanomaly
A79493

Deuteranomaly
B1918E

Tritanomaly
BC8C94

Monochromacy



Original Color
BB8D8F

Achromatopsia
9B9B9B

Achromatomaly
A79697

CSS Examples

Text

The CSS property to change the color of the text to Hex BB8D8F is called "color". The color property can be set on classes, ids or directly on the HTML element.

This example shows how text in the color #BB8D8F looks like.

```
.text, #text, p{  
    color:#BB8D8F  
}
```

If you want to add a text shadow in that color use the text-shadow property, you can generate a text shadow directly with our [CSS Text Shadow Generator](#).

Here you see how black text with a 4 pixel #BB8D8F colored shadow looks like.

```
.shadow{ text-shadow: 4px 4px 2px #BB8D8F
}
```

Border

The CSS property to change the border of an element to Hex BB8D8F is called "border". The border property can be set on classes, ids or directly on the HTML element.

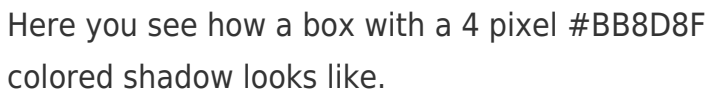
This example shows the color as border, it can be applied via the CSS property "border" or "border-color".

```
.border, #border, table{ border:4px solid
#BB8D8F }
```

If only the border color should be changed use the property `border-color`.

```
.border{ border-color:#BB8D8F }
```

If you want to add a box shadow in that color use:



Here you see how a box with a 4 pixel #BB8D8F colored shadow looks like.

```
.boxshadow{ -moz-box-shadow:4px 4px 4px  
4px #BB8D8F; -webkit-box-shadow:4px 4px  
4px 4px #BB8D8F; box-shadow:4px 4px 4px  
4px #BB8D8F }
```

Background

The CSS property to change the background color of an element to Hex BB8D8F is called "background". The background property can be set on classes, ids or directly on the HTML element.

```
.background, #background, body{  
background:#BB8D8F }
```

If only the background color should be changed can be used:

```
.background{ background-color:#BB8D8F }
```

This example shows the color as background, it is applied via the CSS property "background".

To optimize and compress your CSS code, you can use our [online CSS compressor and optimizer](#) based on csstidy. If you want to create a linear or radial gradient as background or border, check our [CSS Gradient Generator](#).

Hey! You found this booklet interesting? Support Converting Colors with the new Membership Option!

The pro membership hides all ads, plus gives you double the colors in the color bucket, and more awesome pro features!

[Learn more, Memberships starting at \\$2.50/m!](#)

**Follow me
on Twitter!**

@ConvertingColor