

# Converting Colors

Hex(BB916C)

Have a look what the booklet for  
Hex(BB916C) contains.

<b>Hex(BB916C)</b> .....	3
<i><b>Conversions</b></i> .....	4
<i><b>Details</b></i> .....	6
<i><b>Harmonies</b></i> .....	11
<i><b>Previews</b></i> .....	23
<i><b>Color Blindness Simulation</b></i> .....	26
<i><b>CSS Examples</b></i> .....	29

**Color**

**Hex(BB916C)**

# Conversions

## Conversions Part 1

Format	Color
Hex	BB916C
RGB	187, 145, 108
RGB Percent	73%, 57%, 42%
CMY	0.2667, 0.4314, 0.5765
CMYK	0.00, 0.22, 0.42, 0.27
HSL	28°, 37%, 58%
HSV	28°, 42%, 73%
XYZ	33.3257, 31.8983, 18.5879
YIQ	153.3400, 36.9090, -2.6030

# Conversions

## Conversions Part 2

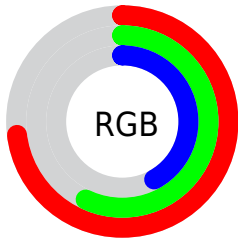
<b>Format</b>	<b>Color</b>
<b>RYB</b>	187, 178, 108
Decimal	12292460
CIELab	63.26, 10.94, 25.70
CIElCh	63, 27.937, 66.943
Yxy	31.8983, 0.3976, 0.3806
Android (android.graphics.Color)	4290482540 (0xFFBB916C)
YUV	153.3400, -22.3526, 29.5198
Hunter-Lab	56.4786, 6.4880, 20.0218

# Details

The Hex color **BB916C** is a dark color, and the websafe version is hex **CC9966**. A complement of this color would be **6C96BB**, and the grayscale version is **9A9A9A**.

A 20% lighter version of the original color is **F5C7A0**, and **845F3C** is the 20% darker color. If you saturate the color by 10%, you get **BB8759**, and if you desaturate by 10%, it is **BB9B7F**.

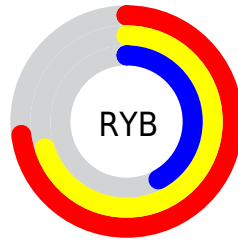
# Distribution



Red (73%)

Green (57%)

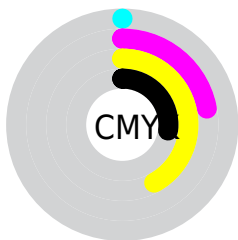
Blue (42%)



Red (73%)

Yellow (70%)

Blue (42%)

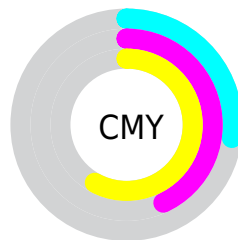


Cyan (0%)

Magenta (22%)

Yellow (42%)

Black (27%)



Cyan (27%)

Magenta (43%)

Yellow (58%)

# Brightness & Saturation Gradients

These gradients show how the Hex color BB916C changes by changing the brightness by 10 percent. The first figure shows a shift by +10% for each color and the second figure -10%.

Similar to the brightness gradients but the following saturation gradients show a change of the Hex color BB916C by changing the saturation by 10% instead.



 BB916C

 BB916C

FFFFFF

 9F7753

 F5C7A0

 845F3C

 FFE3BB

 694726

 FFFFD7

 503010

 FFFFF3

 371B00

 200300

 000000

 BB916C

 BB916C

 BB8759

 BB9B7F

 BB7D47

 BBA591

 BB7334

 BBAFA4

 BB6921

 BBB9B7

 BB5F0E

 BBC3CA

 BB5800

 BBCDDC

 BBD7EF

 BBE1FF

 BBEAFF

# Harmonies

## Analogous

The Analogous color harmony consists of three colors that are next to each other on the color wheel.



C88A7C



BB916C



A59968

# Triad

The Triadic color harmony groups three colors that are evenly spaced from another and form a triangle on the color wheel.



BB916C



53A79E



A491C1

# Complementary

The Complementary color scheme is a pair of colors which are on the opposite of each other on the color wheel.



BB916C



6C96BB

# Split Complementary

Split-complementary colors differ from the complementary color scheme. The scheme consists of three colors, the original color and two neighbors of the complement color.



819ACA



BB916C



49A6B6

# Square

The Square scheme is like the rectangle color scheme, but the four colors are evenly spaced on the color wheel.



BB916C



6DA585



5DA1C6



BE89AD

# Rectangle

The Rectangle color scheme consists of four colors that form a rectangle on the color wheel.



BB916C



939E6C



5DA1C6



9994C5

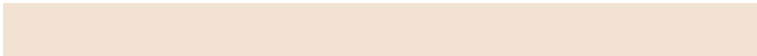


# Sweetspot

The Sweet Spot groups the original color and five complimentary colors.



BB916C



F2E2D3



BB6C96



7A7067



FAFAFA



7A7A7A



# Same Dimension

The Same Dimension uses a secret algorithm to generate beautiful new colors.



BB916C



F2B177



BBB86C



5E5955



9E4A00



1F0E00



# Inverse Universe

The Inverse Universe completely reimagines the original color for something new.



6C96BB



77B8F2



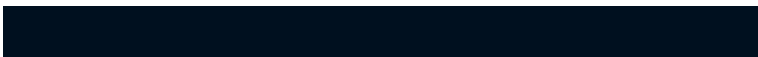
6C6FBB



555A5E



00549E

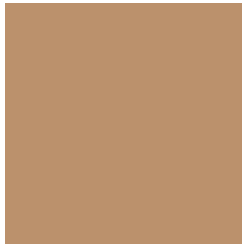


00101F



# Previews

## White Background



This preview shows how the Hex color BB916C looks on a white background.

## Color Contrast Check

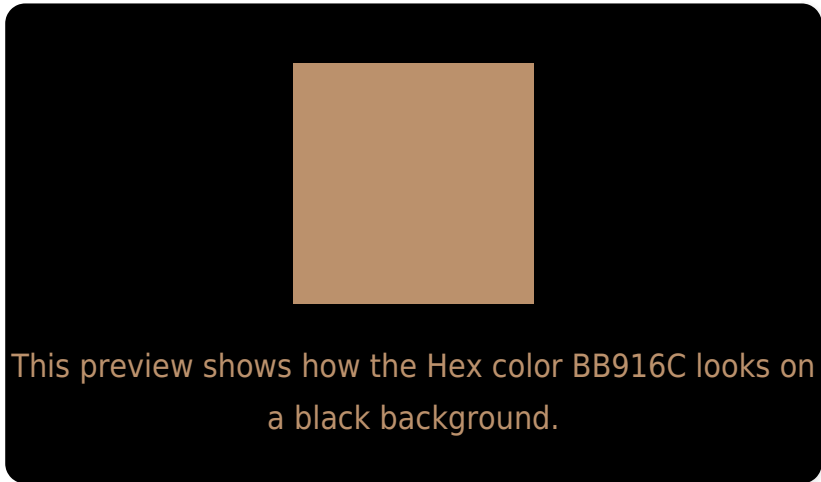
Large Text (above 18pt) WCAG AA × Fail

Any Text WCAG AA × Fail

Large Text (above 18pt) WCAG AAA × Fail

Any Text WCAG AAA × Fail

# Black Background



## Color Contrast Check

Large Text (above 18pt) WCAG AA ✓ Pass

Any Text WCAG AA ✓ Pass

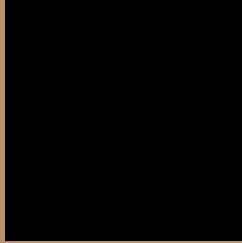
Large Text (above 18pt) WCAG AAA ✓ Pass

Any Text WCAG AAA ✓ Pass

If you want to check with other color combinations, try the [Color Contrast Checker](#).



## Hex BB916C Background



This preview shows how black text looks on a background with the Hex color BB916C.



This preview shows how white text looks on a background with the Hex color BB916C.

# Color Blindness Simulation

Color vision deficiency is a very complex topic, and I could not describe the different causes any better than Wikipedia does, so if you want to learn more, you should check out their [article about color blindness](#).

## Dichromacy



**Original Color**  
BB916C

**Protanopia**  
A59970

**Deuteranopia**  
B7936C

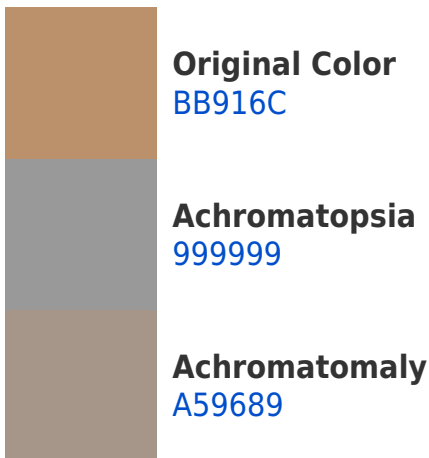


**Tritanopia**  
BF8B96

# Trichromacy



# Monochromacy



# CSS Examples

## Text

The CSS property to change the color of the text to Hex BB916C is called "color". The color property can be set on classes, ids or directly on the HTML element.

This example shows how text in the color #BB916C looks like.

```
.text, #text, p{  
    color:#BB916C  
}
```

If you want to add a text shadow in that color use the text-shadow property, you can generate a text shadow directly with our [CSS Text Shadow Generator](#).

Here you see how black text with a 4 pixel #BB916C colored shadow looks like.

```
.shadow{ text-shadow: 4px 4px 2px #BB916C
}
```

## Border

The CSS property to change the border of an element to Hex BB916C is called "border". The border property can be set on classes, ids or directly on the HTML element.

This example shows the color as border, it can be applied via the CSS property "border" or "border-color".

```
.border, #border, table{ border:4px solid
#BB916C }
```

If only the border color should be changed use the property `border-color`.

```
.border{ border-color:#BB916C }
```

If you want to add a box shadow in that color use:

Here you see how a box with a 4 pixel #BB916C colored shadow looks like.

```
.boxshadow{ -moz-box-shadow:4px 4px 4px  
4px #BB916C; -webkit-box-shadow:4px 4px  
4px 4px #BB916C; box-shadow:4px 4px 4px  
4px #BB916C }
```

# Background

The CSS property to change the background color of an element to Hex BB916C is called "background". The background property can be set on classes, ids or directly on the HTML element.

```
.background, #background, body{  
background:#BB916C }
```

If only the background color should be changed can be used:

```
.background{ background-color:#BB916C }
```

This example shows the color as background, it is applied via the CSS property "background".

To optimize and compress your CSS code, you can use our [online CSS compressor and optimizer](#) based on csstidy. If you want to create a linear or radial gradient as background or border, check our [CSS Gradient Generator](#).



Hey! You found this booklet interesting? Support Converting Colors with the new Membership Option!

The pro membership hides all ads, plus gives you double the colors in the color bucket, and more awesome pro features!

**[Learn more, Memberships starting at \\$2.50/m!](#)**

**Follow me  
on Twitter!**

@ConvertingColor