

Converting Colors

Hex(BB925F)

Have a look what the booklet for
Hex(BB925F) contains.

Hex(BB925F)	3
<i>Conversions</i>	4
<i>Details</i>	6
<i>Harmonies</i>	11
<i>Previews</i>	23
<i>Color Blindness Simulation</i>	26
<i>CSS Examples</i>	29

Color

Hex(BB925F)

Conversions

Conversions Part 1

Format	Color
Hex	BB925F
RGB	187, 146, 95
RGB Percent	73%, 57%, 37%
CMY	0.2667, 0.4275, 0.6275
CMYK	0.00, 0.22, 0.49, 0.27
HSL	33°, 40%, 55%
HSV	33°, 49%, 73%
XYZ	32.8380, 31.9488, 15.2625
YIQ	152.4450, 40.8070, -7.1690

Conversions

Conversions Part 2

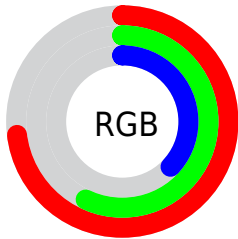
Format	Color
RYB	169, 187, 95
Decimal	12292703
CIELab	63.30, 9.03, 32.83
CIElCh	63, 34.052, 74.617
Yxy	31.9488, 0.4102, 0.3991
Android (android.graphics.Color)	4290482783 (0xFFBB925F)
YUV	152.4450, -28.3204, 30.3047
Hunter-Lab	56.5233, 4.7863, 23.5567

Details

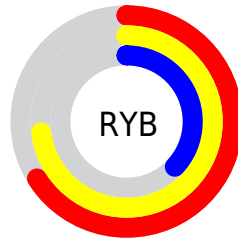
The Hex color **BB925F** is a dark color, and the websafe version is hex **CC9966**. A complement of this color would be **5F88BB**, and the grayscale version is **999999**.

A 20% lighter version of the original color is **F5C892**, and **83602F** is the 20% darker color. If you saturate the color by 10%, you get **BB8A4C**, and if you desaturate by 10%, it is **BB9A72**.

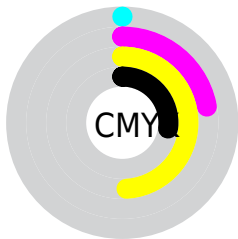
Distribution



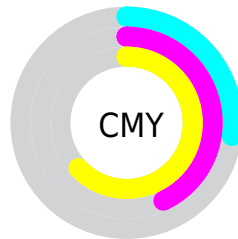
- Red (73%)
- Green (57%)
- Blue (37%)



- Red (66%)
- Yellow (73%)
- Blue (37%)



- Cyan (0%)
- Magenta (22%)
- Yellow (49%)
- Black (27%)



- Cyan (27%)
- Magenta (43%)
- Yellow (63%)

Brightness & Saturation Gradients

These gradients show how the Hex color BB925F changes by changing the brightness by 10 percent. The first figure shows a shift by +10% for each color and the second figure -10%.

Similar to the brightness gradients but the following saturation gradients show a change of the Hex color BB925F by changing the saturation by 10% instead.

 BB925F

 BB925F

FFFFFF

 9F7847

 F5C892

 83602F

 FFE4AD

 694818

 FFFFC9

 4F3200

 FFFF E5

 361D00

 1E0400

 000000

 BB925F

 BB925F

 BB8A4C

 BB9A72

 BB813A

 BBA384

 BB7927

 BBAB97

 BB7114

 BBB3AA

 BB6802

 BBBCBC

 BB6800

 BBC4CF

 BBCCE2

 BBD5F5

 BBDDFF

Harmonies

Analogous

The Analogous color harmony consists of three colors that are next to each other on the color wheel.



CE8870



BB925F



9F9C5E

Triad

The Triadic color harmony groups three colors that are evenly spaced from another and form a triangle on the color wheel.



BB925F



2DAAA7



AF8CC5

Complementary

The Complementary color scheme is a pair of colors which are on the opposite of each other on the color wheel.



BB925F



5F88BB

Split Complementary

Split-complementary colors differ from the complementary color scheme. The scheme consists of three colors, the original color and two neighbors of the complement color.



8697D4



BB925F



23A7C3

Square

The Square scheme is like the rectangle color scheme, but the four colors are evenly spaced on the color wheel.



BB925F



57A888



53A1D3



CB84AA

Rectangle

The Rectangle color scheme consists of four colors that form a rectangle on the color wheel.



BB925F



88A266



53A1D3



A390CB

Sweetspot

The Sweet Spot groups the original color and five complimentary colors.



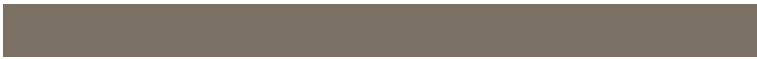
BB925F



F2E2CE



BB5F88



7A7164



F9F9F9



7A7A7A

Same Dimension

The Same Dimension uses a secret algorithm to generate beautiful new colors.



BB925F



F2B363



B6BB5F



5E5A55



9E5800



1F1100

Inverse Universe

The Inverse Universe completely reimagines the original color for something new.



5F88BB



63A3F2



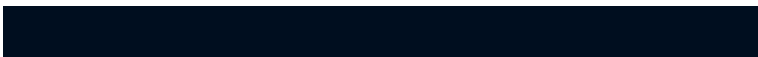
645FBB



55595E



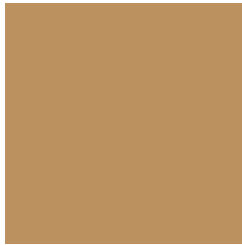
00469E



000E1F

Previews

White Background



This preview shows how the Hex color BB925F looks on a white background.

Color Contrast Check

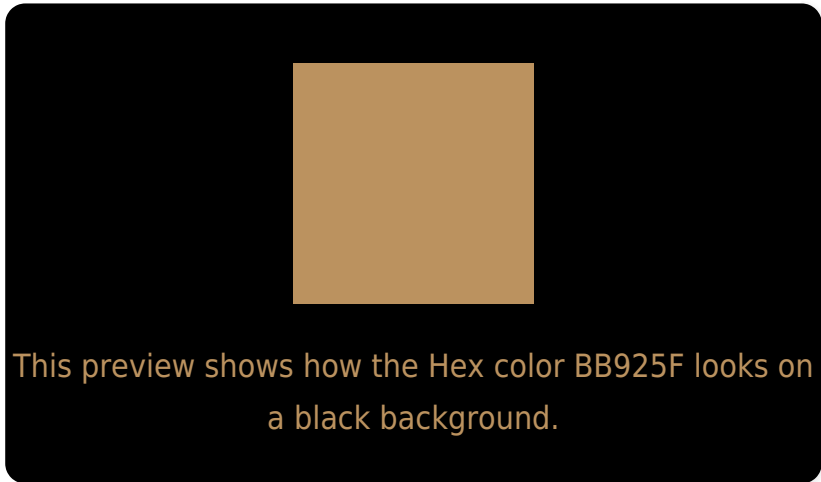
Large Text (above 18pt) WCAG AA × Fail

Any Text WCAG AA × Fail

Large Text (above 18pt) WCAG AAA × Fail

Any Text WCAG AAA × Fail

Black Background



Color Contrast Check

Large Text (above 18pt) WCAG AA ✓ Pass

Any Text WCAG AA ✓ Pass

Large Text (above 18pt) WCAG AAA ✓ Pass

Any Text WCAG AAA ✓ Pass

If you want to check with other color combinations, try the [Color Contrast Checker](#).

Hex BB925F Background



This preview shows how black text looks on a background with the Hex color BB925F.



This preview shows how white text looks on a background with the Hex color BB925F.

Color Blindness Simulation

Color vision deficiency is a very complex topic, and I could not describe the different causes any better than Wikipedia does, so if you want to learn more, you should check out their [article about color blindness](#).

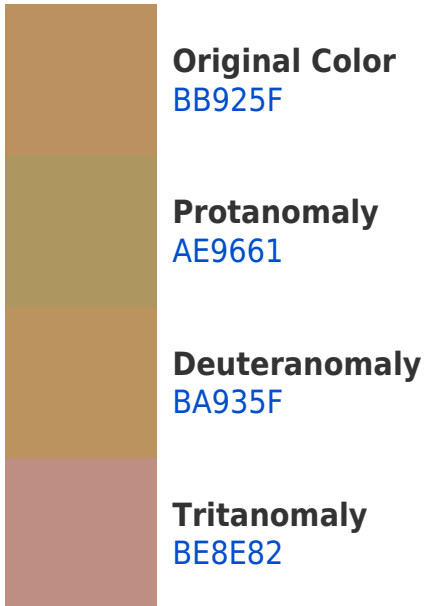
Dichromacy



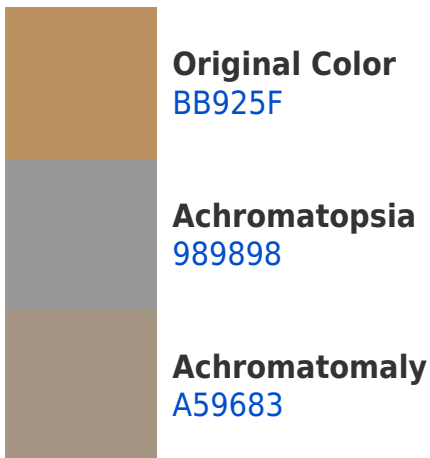


Tritanopia
C08B96

Trichromacy



Monochromacy



CSS Examples

Text

The CSS property to change the color of the text to Hex BB925F is called "color". The color property can be set on classes, ids or directly on the HTML element.

This example shows how text in the color #BB925F looks like.

```
.text, #text, p{  
    color:#BB925F  
}
```

If you want to add a text shadow in that color use the text-shadow property, you can generate a text shadow directly with our [CSS Text Shadow Generator](#).

Here you see how black text with a 4 pixel #BB925F colored shadow looks like.

```
.shadow{ text-shadow: 4px 4px 2px #BB925F
}
```

Border

The CSS property to change the border of an element to Hex BB925F is called "border". The border property can be set on classes, ids or directly on the HTML element.

This example shows the color as border, it can be applied via the CSS property "border" or "border-color".

```
.border, #border, table{ border:4px solid
#BB925F }
```

If only the border color should be changed use the property `border-color`.

```
.border{ border-color:#BB925F }
```

If you want to add a box shadow in that color use:

Here you see how a box with a 4 pixel #BB925F colored shadow looks like.

```
.boxshadow{ -moz-box-shadow:4px 4px 4px  
4px #BB925F; -webkit-box-shadow:4px 4px  
4px 4px #BB925F; box-shadow:4px 4px 4px  
4px #BB925F }
```

Background

The CSS property to change the background color of an element to Hex BB925F is called "background". The background property can be set on classes, ids or directly on the HTML element.

```
.background, #background, body{  
background:#BB925F }
```

If only the background color should be changed can be used:

```
.background{ background-color:#BB925F }
```

This example shows the color as background, it is applied via the CSS property "background".

To optimize and compress your CSS code, you can use our [online CSS compressor and optimizer](#) based on csstidy. If you want to create a linear or radial gradient as background or border, check our [CSS Gradient Generator](#).

Hey! You found this booklet interesting? Support Converting Colors with the new Membership Option!

The pro membership hides all ads, plus gives you double the colors in the color bucket, and more awesome pro features!

[Learn more, Memberships starting at \\$2.50/m!](#)

**Follow me
on Twitter!**

@ConvertingColor