

Converting Colors

Hex(BB945F)

Have a look what the booklet for
Hex(BB945F) contains.

Hex(BB945F)	3
<i>Conversions</i>	4
<i>Details</i>	6
<i>Harmonies</i>	11
<i>Previews</i>	23
<i>Color Blindness Simulation</i>	26
<i>CSS Examples</i>	29

Color

Hex(BB945F)

Conversions

Conversions Part 1

Format	Color
Hex	BB945F
RGB	187, 148, 95
RGB Percent	73%, 58%, 37%
CMY	0.2667, 0.4196, 0.6275
CMYK	0.00, 0.21, 0.49, 0.27
HSL	35°, 40%, 55%
HSV	35°, 49%, 73%
XYZ	33.1490, 32.5708, 15.3661
YIQ	153.6190, 40.2570, -8.2150

Conversions

Conversions Part 2

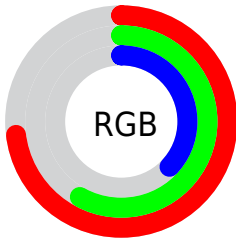
Format	Color
RYB	163, 187, 95
Decimal	12293215
CIELab	63.81, 7.93, 33.48
CIElCh	64, 34.406, 76.670
Yxy	32.5708, 0.4088, 0.4017
Android (android.graphics.Color)	4290483295 (0xFFBB945F)
YUV	153.6190, -28.8992, 29.2751
Hunter-Lab	57.0709, 3.8058, 23.9860

Details

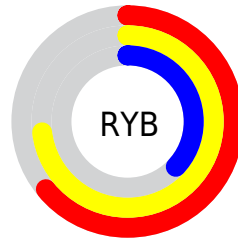
The Hex color **BB945F** is a dark color, and the websafe version is hex **CC9966**. A complement of this color would be **5F86BB**, and the grayscale version is **9A9A9A**.

A 20% lighter version of the original color is **F5CA92**, and **83612F** is the 20% darker color. If you saturate the color by 10%, you get **BB8C4C**, and if you desaturate by 10%, it is **BB9C72**.

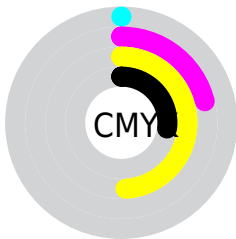
Distribution



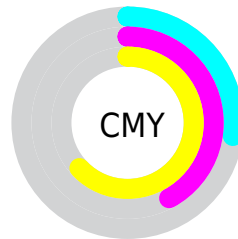
- Red (73%)
- Green (58%)
- Blue (37%)



- Red (64%)
- Yellow (73%)
- Blue (37%)



- Cyan (0%)
- Magenta (21%)
- Yellow (49%)
- Black (27%)



- Cyan (27%)
- Magenta (42%)
- Yellow (63%)

Brightness & Saturation Gradients

These gradients show how the Hex color BB945F changes by changing the brightness by 10 percent. The first figure shows a shift by +10% for each color and the second figure -10%.

Similar to the brightness gradients but the following saturation gradients show a change of the Hex color BB945F by changing the saturation by 10% instead.

 BB945F

 BB945F

FFFFFF

 9F7A47

 F5CA92

 83612F

 FFE6AD

 694A18

 FFFFC9

 4F3300

 FFFF E5

 361E00

 1E0700

 000000

 BB945F

 BB945F

 BB8C4C

 BB9C72

 BB843A

 BBA484

 BB7C27

 BBAC97

 BB7414

 BBB4AA

 BB6C02

 BBBCBC

 BB6C00

 BBC4CF

 BBCBE2

 BBD3F5

 BBDBFF

Harmonies

Analogous

The Analogous color harmony consists of three colors that are next to each other on the color wheel.



CF8A6F



BB945F



9E9E5F

Triad

The Triadic color harmony groups three colors that are evenly spaced from another and form a triangle on the color wheel.



BB945F



2AABAB



B38DC5

Complementary

The Complementary color scheme is a pair of colors which are on the opposite of each other on the color wheel.



BB945F



5F86BB

Split Complementary

Split-complementary colors differ from the complementary color scheme. The scheme consists of three colors, the original color and two neighbors of the complement color.



8A98D5



BB945F



24A8C6

Square

The Square scheme is like the rectangle color scheme, but the four colors are evenly spaced on the color wheel.



BB945F



54AA8B



57A2D6



CE84AA

Rectangle

The Rectangle color scheme consists of four colors that form a rectangle on the color wheel.



BB945F



87A468



57A2D6



A790CC

Sweetspot

The Sweet Spot groups the original color and five complimentary colors.



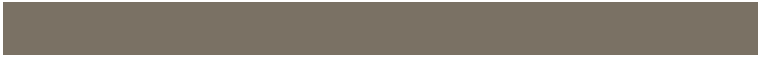
BB945F



F2E3CE



BB5F87



7A7164



FAFAFA



7A7A7A

Same Dimension

The Same Dimension uses a secret algorithm to generate beautiful new colors.



BB945F



F2B663



B5BB5F



5E5A55



9E5B00



1F1200

Inverse Universe

The Inverse Universe completely reimagines the original color for something new.



5F86BB



63A0F2



655FBB



55595E



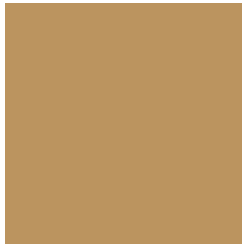
00439E



000D1F

Previews

White Background



This preview shows how the Hex color BB945F looks on a white background.

Color Contrast Check

Large Text (above 18pt) WCAG AA × Fail

Any Text WCAG AA × Fail

Large Text (above 18pt) WCAG AAA × Fail

Any Text WCAG AAA × Fail

Black Background



Color Contrast Check

Large Text (above 18pt) WCAG AA ✓ Pass

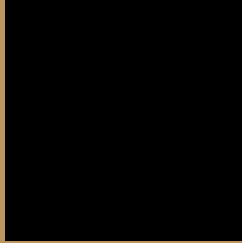
Any Text WCAG AA ✓ Pass

Large Text (above 18pt) WCAG AAA ✓ Pass

Any Text WCAG AAA ✓ Pass

If you want to check with other color combinations, try the [Color Contrast Checker](#).

Hex BB945F Background



This preview shows how black text looks on a background with the Hex color BB945F.



This preview shows how white text looks on a background with the Hex color BB945F.

Color Blindness Simulation

Color vision deficiency is a very complex topic, and I could not describe the different causes any better than Wikipedia does, so if you want to learn more, you should check out their [article about color blindness](#).

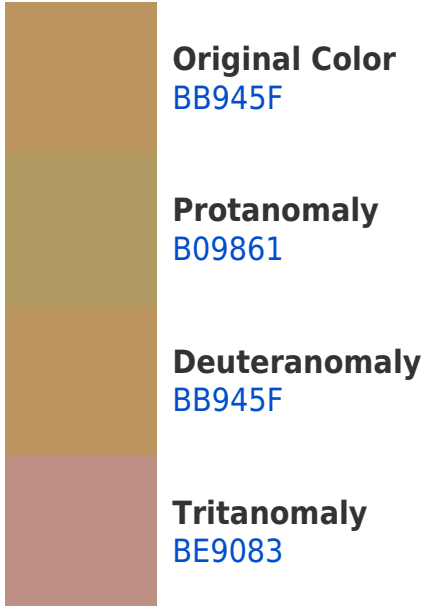
Dichromacy



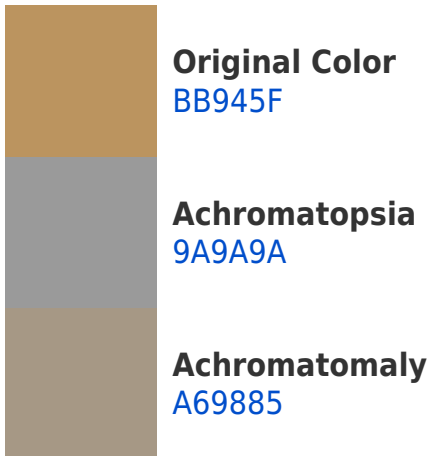


Tritanopia
C08D98

Trichromacy



Monochromacy



CSS Examples

Text

The CSS property to change the color of the text to Hex BB945F is called "color". The color property can be set on classes, ids or directly on the HTML element.

This example shows how text in the color #BB945F looks like.

```
.text, #text, p{  
    color:#BB945F  
}
```

If you want to add a text shadow in that color use the text-shadow property, you can generate a text shadow directly with our [CSS Text Shadow Generator](#).

Here you see how black text with a 4 pixel #BB945F colored shadow looks like.

```
.shadow{ text-shadow: 4px 4px 2px #BB945F
}
```

Border

The CSS property to change the border of an element to Hex BB945F is called "border". The border property can be set on classes, ids or directly on the HTML element.

This example shows the color as border, it can be applied via the CSS property "border" or "border-color".

```
.border, #border, table{ border:4px solid
#BB945F }
```

If only the border color should be changed use the property `border-color`.

```
.border{ border-color:#BB945F }
```

If you want to add a box shadow in that color use:

Here you see how a box with a 4 pixel #BB945F colored shadow looks like.

```
.boxshadow{ -moz-box-shadow:4px 4px 4px  
4px #BB945F; -webkit-box-shadow:4px 4px  
4px 4px #BB945F; box-shadow:4px 4px 4px  
4px #BB945F }
```

Background

The CSS property to change the background color of an element to Hex BB945F is called "background". The background property can be set on classes, ids or directly on the HTML element.

```
.background, #background, body{  
background:#BB945F }
```

If only the background color should be changed can be used:

```
.background{ background-color:#BB945F }
```

This example shows the color as background, it is applied via the CSS property "background".

To optimize and compress your CSS code, you can use our [online CSS compressor and optimizer](#) based on csstidy. If you want to create a linear or radial gradient as background or border, check our [CSS Gradient Generator](#).

Hey! You found this booklet interesting? Support Converting Colors with the new Membership Option!

The pro membership hides all ads, plus gives you double the colors in the color bucket, and more awesome pro features!

[Learn more, Memberships starting at \\$2.50/m!](#)

**Follow me
on Twitter!**

@ConvertingColor