

# Converting Colors

Hex(BB9696)

Have a look what the booklet for  
Hex(BB9696) contains.

<b>Hex(BB9696)</b> .....	3
<b><i>Conversions</i></b> .....	4
<b><i>Details</i></b> .....	6
<b><i>Harmonies</i></b> .....	11
<b><i>Previews</i></b> .....	23
<b><i>Color Blindness Simulation</i></b> .....	26
<b><i>CSS Examples</i></b> .....	29

**Color**

**Hex(BB9696)**

# Conversions

## Conversions Part 1

Format	Color
Hex	BB9696
RGB	187, 150, 150
RGB Percent	73%, 59%, 59%
CMY	0.2667, 0.4118, 0.4118
CMYK	0.00, 0.20, 0.20, 0.27
HSL	0°, 21%, 66%
HSV	0°, 20%, 73%
XYZ	36.9049, 34.5795, 33.5836
YIQ	161.0630, 22.0520, 7.8440

# Conversions

## Conversions Part 2

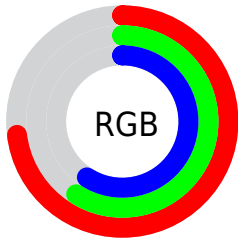
Format	Color
<a href="#">RYB</a>	<a href="#">187, 150, 150</a>
Decimal	<a href="#">12293782</a>
CIELab	<a href="#">65.42, 13.82, 5.25</a>
CIElCh	<a href="#">65, 14.785, 20.796</a>
Yxy	<a href="#">34.5795, 0.3512, 0.3291</a>
Android (android.graphics.Color)	<a href="#">4290483862</a> (0xFFBB9696)
YUV	<a href="#">161.0630, -5.4541, 22.7467</a>
Hunter-Lab	<a href="#">58.8043, 9.1168, 7.3021</a>

# Details

The Hex color **BB9696** is a light color, and the websafe version is hex **CC9999**. A complement of this color would be **96BBBB**, and the grayscale version is **A1A1A1**.

A 20% lighter version of the original color is **F4CCCC**, and **856363** is the 20% darker color. If you saturate the color by 10%, you get **BB8383**, and if you desaturate by 10%, it is **BBA9A9**.

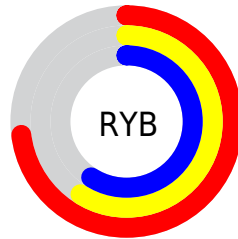
# Distribution



Red (73%)

Green (59%)

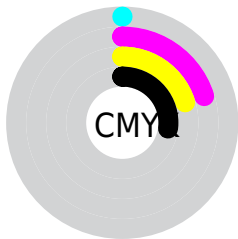
Blue (59%)



Red (73%)

Yellow (59%)

Blue (59%)

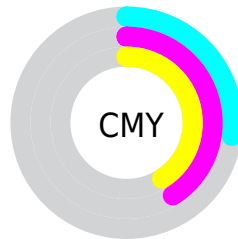


Cyan (0%)

Magenta (20%)

Yellow (20%)

Black (27%)



Cyan (27%)

Magenta (41%)

Yellow (41%)

# Brightness & Saturation Gradients

These gradients show how the Hex color BB9696 changes by changing the brightness by 10 percent. The first figure shows a shift by +10% for each color and the second figure -10%.

Similar to the brightness gradients but the following saturation gradients show a change of the Hex color BB9696 by changing the saturation by 10% instead.



 BB9696

 BB9696

FFFFFF

 A07C7C

 F4CCCC

 856363

 FFE8E8

 6B4B4B

 533435

 3B1F20

 250808

 000000

 BB9696

 BB9696

 BB8383

 BBA9A9

 BB7171

 BBBB BB

 BB5E5E

 BBCECE

 BB4B4B

 BBE1E1

 BB3939

 BBF4F4

 BB2626

 BBFFFF

 BB1313

 BB0000

# Harmonies

## Analogous

The Analogous color harmony consists of three colors that are next to each other on the color wheel.



B796A3



BB9696



B7988B

# Triad

The Triadic color harmony groups three colors that are evenly spaced from another and form a triangle on the color wheel.



BB9696



90A48E



8BA1B9

# Complementary

The Complementary color scheme is a pair of colors which are on the opposite of each other on the color wheel.



BB9696



96BBBB

# Split Complementary

Split-complementary colors differ from the complementary color scheme. The scheme consists of three colors, the original color and two neighbors of the complement color.



7FA5B3



BB9696



83A69A

# Square

The Square scheme is like the rectangle color scheme, but the four colors are evenly spaced on the color wheel.



BB9696



9FA186



7CA6A8



9C9DB7

# Rectangle

The Rectangle color scheme consists of four colors that form a rectangle on the color wheel.



BB9696



B19B86



7CA6A8



87A3B7



# Sweetspot

The Sweet Spot groups the original color and five complimentary colors.



BB9696



F2E4E4



BB96BB



7A7272



FAFAFA



7A7A7A



# Same Dimension

The Same Dimension uses a secret algorithm to generate beautiful new colors.



BB9696



F2B8B8



BBA996



5E5555



9E0000



1F0000



# Inverse Universe

The Inverse Universe completely reimagines the original color for something new.



96BBBB



B8F2F2



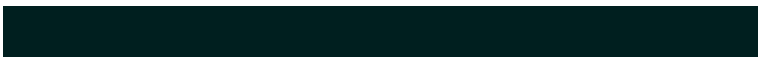
96A9BB



555E5E



009E9E

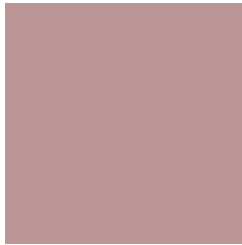


001F1F



# Previews

## White Background



This preview shows how the Hex color BB9696 looks on a white background.

## Color Contrast Check

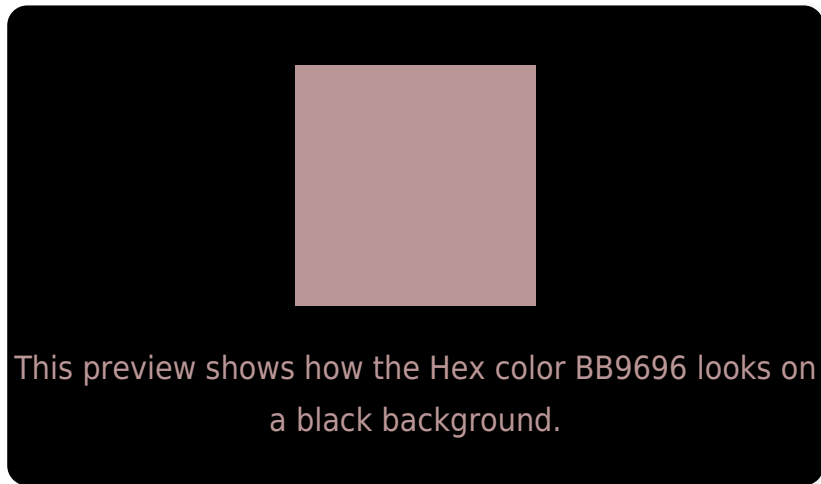
Large Text (above 18pt) WCAG AA × Fail

Any Text WCAG AA × Fail

Large Text (above 18pt) WCAG AAA × Fail

Any Text WCAG AAA × Fail

# Black Background



## Color Contrast Check

Large Text (above 18pt) WCAG AA ✓ Pass

Any Text WCAG AA ✓ Pass

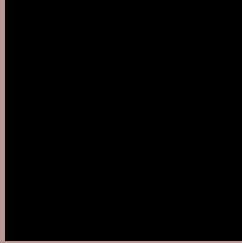
Large Text (above 18pt) WCAG AAA ✓ Pass

Any Text WCAG AAA ✓ Pass

If you want to check with other color combinations, try the [Color Contrast Checker](#).



## Hex BB9696 Background



This preview shows how black text looks on a background with the Hex color BB9696.



This preview shows how white text looks on a background with the Hex color BB9696.

# Color Blindness Simulation

Color vision deficiency is a very complex topic, and I could not describe the different causes any better than Wikipedia does, so if you want to learn more, you should check out their [article about color blindness](#).

## Dichromacy



**Original Color**  
BB9696

**Protanopia**  
A39E9B

**Deuteranopia**  
B29A95



**Tritanopia**  
BC94A0

# Trichromacy



**Original Color**  
BB9696

**Protanomaly**  
AC9B99

**Deuteranomaly**  
B59995

**Tritanomaly**  
BC959C

# Monochromacy



**Original Color**  
BB9696

**Achromatopsia**  
A1A1A1

**Achromatomaly**  
AA9D9D

# CSS Examples

## Text

The CSS property to change the color of the text to Hex BB9696 is called "color". The color property can be set on classes, ids or directly on the HTML element.

This example shows how text in the color #BB9696 looks like.

```
.text, #text, p{  
    color:#BB9696  
}
```

If you want to add a text shadow in that color use the text-shadow property, you can generate a text shadow directly with our [CSS Text Shadow Generator](#).

Here you see how black text with a 4 pixel #BB9696 colored shadow looks like.

```
.shadow{ text-shadow: 4px 4px 2px #BB9696
}
```

## Border

The CSS property to change the border of an element to Hex BB9696 is called "border". The border property can be set on classes, ids or directly on the HTML element.

This example shows the color as border, it can be applied via the CSS property "border" or "border-color".

```
.border, #border, table{ border:4px solid
#BB9696 }
```

If only the border color should be changed use the property `border-color`.

```
.border{ border-color:#BB9696 }
```

If you want to add a box shadow in that color use:

Here you see how a box with a 4 pixel #BB9696 colored shadow looks like.

```
.boxshadow{ -moz-box-shadow:4px 4px 4px  
4px #BB9696; -webkit-box-shadow:4px 4px  
4px 4px #BB9696; box-shadow:4px 4px 4px  
4px #BB9696 }
```

# Background

The CSS property to change the background color of an element to Hex BB9696 is called "background". The background property can be set on classes, ids or directly on the HTML element.

```
.background, #background, body{  
background:#BB9696 }
```

If only the background color should be changed can be used:

```
.background{ background-color:#BB9696 }
```

This example shows the color as background, it is applied via the CSS property "background".

To optimize and compress your CSS code, you can use our [online CSS compressor and optimizer](#) based on csstidy. If you want to create a linear or radial gradient as background or border, check our [CSS Gradient Generator](#).



Hey! You found this booklet interesting? Support Converting Colors with the new Membership Option!

The pro membership hides all ads, plus gives you double the colors in the color bucket, and more awesome pro features!

**[Learn more, Memberships starting at \\$2.50/m!](#)**

**Follow me  
on Twitter!**

@ConvertingColor