

# Converting Colors

Hex(BB9998)

Have a look what the booklet for  
Hex(BB9998) contains.

<b>Hex(BB9998)</b> .....	3
<i><b>Conversions</b></i> .....	4
<i><b>Details</b></i> .....	6
<i><b>Harmonies</b></i> .....	11
<i><b>Previews</b></i> .....	23
<i><b>Color Blindness Simulation</b></i> .....	26
<i><b>CSS Examples</b></i> .....	29

**Color**

**Hex(BB9998)**

# Conversions

## Conversions Part 1

Format	Color
Hex	BB9998
RGB	187, 153, 152
RGB Percent	73%, 60%, 60%
CMY	0.2667, 0.4000, 0.4039
CMYK	0.00, 0.18, 0.19, 0.27
HSL	2°, 20%, 66%
HSV	2°, 19%, 73%
XYZ	37.5522, 35.6143, 34.6008
YIQ	163.0520, 20.5850, 6.8970

# Conversions

## Conversions Part 2

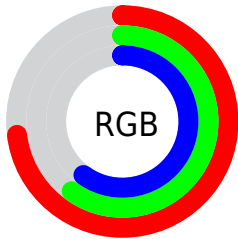
<b>Format</b>	<b>Color</b>
<a href="#">RYB</a>	<a href="#">187, 153, 152</a>
Decimal	<a href="#">12294552</a>
CIELab	<a href="#">66.22, 12.48, 5.28</a>
CIElCh	<a href="#">66, 13.549, 22.958</a>
Yxy	<a href="#">35.6143, 0.3485, 0.3305</a>
Android (android.graphics.Color)	<a href="#">4290484632</a> (0xFFBB9998)
YUV	<a href="#">163.0520, -5.4486, 21.0024</a>
Hunter-Lab	<a href="#">59.6777, 7.8854, 7.3984</a>

# Details

The Hex color **BB9998** is a light color, and the websafe version is hex **CC9999**. A complement of this color would be **98BABB**, and the grayscale version is **A3A3A3**.

A 20% lighter version of the original color is **F4CFCE**, and **856665** is the 20% darker color. If you saturate the color by 10%, you get **BB8785**, and if you desaturate by 10%, it is **BBABAB**.

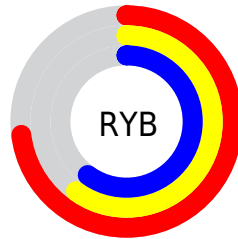
# Distribution



Red (73%)

Green (60%)

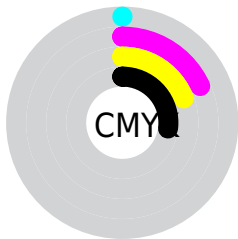
Blue (60%)



Red (73%)

Yellow (60%)

Blue (60%)

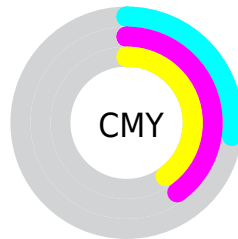


Cyan (0%)

Magenta (18%)

Yellow (19%)

Black (27%)



Cyan (27%)

Magenta (40%)

Yellow (40%)

# Brightness & Saturation Gradients

These gradients show how the Hex color BB9998 changes by changing the brightness by 10 percent. The first figure shows a shift by +10% for each color and the second figure -10%.

Similar to the brightness gradients but the following saturation gradients show a change of the Hex color BB9998 by changing the saturation by 10% instead.



 BB9998

 BB9998

FFFFFF

 A07F7E

 F4CFCE

 856665

 FFECEA

 6C4E4D

 533737

 3B2121

 250C0A

 000000

 BB9998

 BB9998

 BB8785

 BBABAB

 BB7573

 BBBDBD

 BB6360

 BBCFD0

 BB504D

 BBE2E3

 BB3E3B

 BBF4F6

 BB2C28

 BBFFFF

 BB1A15

 BB0802

 BB0500

# Harmonies

## Analogous

The Analogous color harmony consists of three colors that are next to each other on the color wheel.



B899A4



BB9998



B79B8E

# Triad

The Triadic color harmony groups three colors that are evenly spaced from another and form a triangle on the color wheel.



BB9998



93A692



90A3B9

# Complementary

The Complementary color scheme is a pair of colors which are on the opposite of each other on the color wheel.



BB9998



98BABB

# Split Complementary

Split-complementary colors differ from the complementary color scheme. The scheme consists of three colors, the original color and two neighbors of the complement color.



85A6B4



BB9998



87A89E

# Square

The Square scheme is like the rectangle color scheme, but the four colors are evenly spaced on the color wheel.



BB9998



A1A38B



82A8AA



A09FB7

# Rectangle

The Rectangle color scheme consists of four colors that form a rectangle on the color wheel.



BB9998



B19E8A



82A8AA



8CA4B8



# Sweetspot

The Sweet Spot groups the original color and five complimentary colors.



BB9998



F2E4E4



BB98BA



7A7272



FAFAFA



7A7A7A



# Same Dimension

The Same Dimension uses a secret algorithm to generate beautiful new colors.



BB9998



F2BEBD



BBAA98



5E5555



9E0500



1F0100



# Inverse Universe

The Inverse Universe completely reimagines the original color for something new.



98BABB



BDF1F2



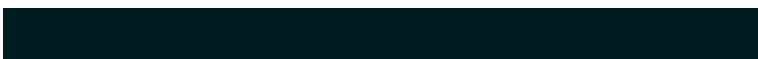
98A9BB



555E5E



009A9E

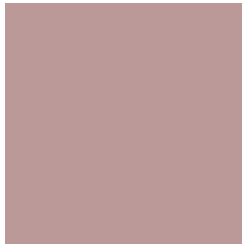


001E1F



# Previews

## White Background



This preview shows how the Hex color BB9998 looks on a white background.

## Color Contrast Check

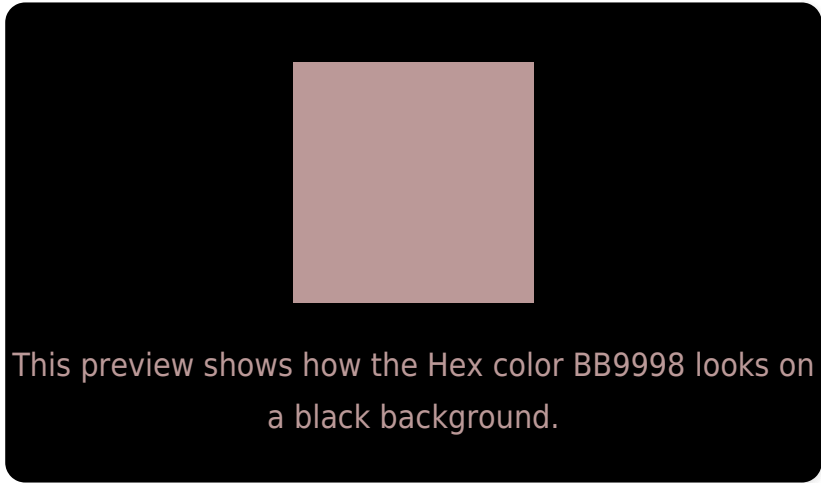
Large Text (above 18pt) WCAG AA × Fail

Any Text WCAG AA × Fail

Large Text (above 18pt) WCAG AAA × Fail

Any Text WCAG AAA × Fail

# Black Background



## Color Contrast Check

Large Text (above 18pt) WCAG AA ✓ Pass

Any Text WCAG AA ✓ Pass

Large Text (above 18pt) WCAG AAA ✓ Pass

Any Text WCAG AAA ✓ Pass

If you want to check with other color combinations, try the [Color Contrast Checker](#).



## Hex BB9998 Background



This preview shows how black text looks on a background with the Hex color BB9998.

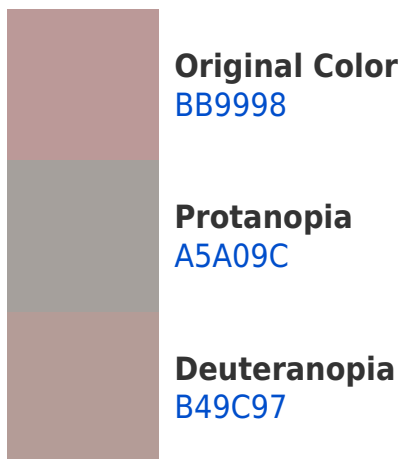



This preview shows how white text looks on a background with the Hex color BB9998.

# Color Blindness Simulation

Color vision deficiency is a very complex topic, and I could not describe the different causes any better than Wikipedia does, so if you want to learn more, you should check out their [article about color blindness](#).

## Dichromacy





**Tritanopia**  
BC97A3

# Trichromacy



**Original Color**  
BB9998

**Protanomaly**  
AD9D9B

**Deuteranomaly**  
B79B97

**Tritanomaly**  
BC989F

# Monochromacy



**Original Color**  
BB9998

**Achromatopsia**  
A3A3A3

**Achromatomaly**  
AC9F9F

# CSS Examples

## Text

The CSS property to change the color of the text to Hex BB9998 is called "color". The color property can be set on classes, ids or directly on the HTML element.

This example shows how text in the color #BB9998 looks like.

```
.text, #text, p{  
    color:#BB9998  
}
```

If you want to add a text shadow in that color use the text-shadow property, you can generate a text shadow directly with our [CSS Text Shadow Generator](#).

Here you see how black text with a 4 pixel #BB9998 colored shadow looks like.

```
.shadow{ text-shadow: 4px 4px 2px #BB9998  
}
```

## Border

The CSS property to change the border of an element to Hex BB9998 is called "border". The border property can be set on classes, ids or directly on the HTML element.

This example shows the color as border, it can be applied via the CSS property "border" or "border-color".

```
.border, #border, table{ border:4px solid  
#BB9998 }
```

If only the border color should be changed use the property `border-color`.

```
.border{ border-color:#BB9998 }
```

If you want to add a box shadow in that color use:

Here you see how a box with a 4 pixel #BB9998 colored shadow looks like.

```
.boxshadow{ -moz-box-shadow:4px 4px 4px  
4px #BB9998; -webkit-box-shadow:4px 4px  
4px 4px #BB9998; box-shadow:4px 4px 4px  
4px #BB9998 }
```

# Background

The CSS property to change the background color of an element to Hex BB9998 is called "background". The background property can be set on classes, ids or directly on the HTML element.

```
.background, #background, body{  
background:#BB9998 }
```

If only the background color should be changed can be used:

```
.background{ background-color:#BB9998 }
```

This example shows the color as background, it is applied via the CSS property "background".

To optimize and compress your CSS code, you can use our [online CSS compressor and optimizer](#) based on csstidy. If you want to create a linear or radial gradient as background or border, check our [CSS Gradient Generator](#).



Hey! You found this booklet interesting? Support Converting Colors with the new Membership Option!

The pro membership hides all ads, plus gives you double the colors in the color bucket, and more awesome pro features!

**[Learn more, Memberships starting at \\$2.50/m!](#)**

**Follow me  
on Twitter!**

@ConvertingColor