

# Converting Colors

Hex(BBA5AA)

Have a look what the booklet for  
Hex(BBA5AA) contains.

<b>Hex(BBA5AA)</b> .....	3
<i><b>Conversions</b></i> .....	4
<i><b>Details</b></i> .....	6
<i><b>Harmonies</b></i> .....	11
<i><b>Previews</b></i> .....	23
<i><b>Color Blindness Simulation</b></i> .....	26
<i><b>CSS Examples</b></i> .....	29

# **Color**

**Hex(BBA5AA)**

# Conversions

## Conversions Part 1

Format	Color
Hex	BBA5AA
RGB	187, 165, 170
RGB Percent	73%, 65%, 67%
CMY	0.2667, 0.3529, 0.3333
CMYK	0.00, 0.12, 0.09, 0.27
HSL	346°, 14%, 69%
HSV	346°, 12%, 73%
XYZ	41.2043, 40.3773, 43.6521
YIQ	172.1480, 11.5070, 6.2190

# Conversions

## Conversions Part 2

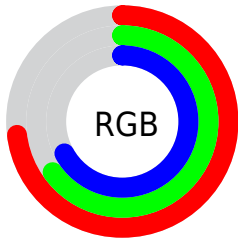
Format	Color
<a href="#">RYB</a>	<a href="#">187, 165, 170</a>
Decimal	<a href="#">12297642</a>
CIELab	<a href="#">69.74, 8.86, 0.35</a>
CIELCh	<a href="#">70, 8.867, 2.265</a>
Yxy	<a href="#">40.3773, 0.3290, 0.3224</a>
Android (android.graphics.Color)	<a href="#">4290487722</a> ( <a href="#">0xFFBBA5AA</a> )
YUV	<a href="#">172.1480, -1.0590, 13.0252</a>
Hunter-Lab	<a href="#">63.5432, 4.5472, 3.7499</a>

# Details

The Hex color **BBA5AA** is a light color, and the websafe version is hex **999999**. A complement of this color would be **A5BBB6**, and the grayscale version is **ACACAC**.

A 20% lighter version of the original color is **F3DCE1**, and **867176** is the 20% darker color. If you saturate the color by 10%, you get **BB929C**, and if you desaturate by 10%, it is **BBB8B8**.

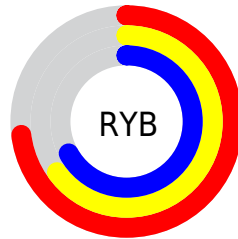
# Distribution



Red (73%)

Green (65%)

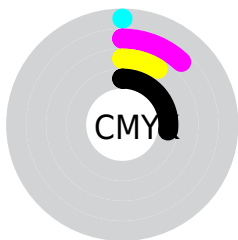
Blue (67%)



Red (73%)

Yellow (65%)

Blue (67%)

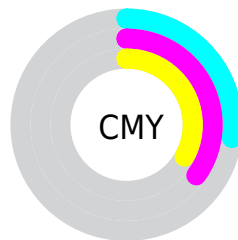


Cyan (0%)

Magenta (12%)

Yellow (9%)

Black (27%)



Cyan (27%)

Magenta (35%)

Yellow (33%)

# Brightness & Saturation Gradients

These gradients show how the Hex color BBA5AA changes by changing the brightness by 10 percent. The first figure shows a shift by +10% for each color and the second figure -10%.

Similar to the brightness gradients but the following saturation gradients show a change of the Hex color BBA5AA by changing the saturation by 10% instead.



 BBA5AA

 BBA5AA

FFFFFF

 A08B90

 F3DCE1

 867176

 FFF9FE

 6C595D

 544146

 3D2B2F

 26171B

 120000

 000000

 BBA5AA

 BBA5AA

 BB929C

 BBB8B8

 BB808D

 BBCAC7

 BB6D7F

 BBDDD5

 BB5A70

 BBF0E4

 BB4862

 BBFFF2

 BB3553

 BBFFFF

 BB2245

 BB0F36

 BB002A

# Harmonies

## Analogous

The Analogous color harmony consists of three colors that are next to each other on the color wheel.



B6A6B2



BBA5AA



BCA6A2

# Triad

The Triadic color harmony groups three colors that are evenly spaced from another and form a triangle on the color wheel.



BBA5AA



A7AD9D



9BADB8

# Complementary

The Complementary color scheme is a pair of colors which are on the opposite of each other on the color wheel.



BBA5AA



A5BBB6

# Split Complementary

Split-complementary colors differ from the complementary color scheme. The scheme consists of three colors, the original color and two neighbors of the complement color.



97AFB3



BBA5AA



9EAEA3

# Square

The Square scheme is like the rectangle color scheme, but the four colors are evenly spaced on the color wheel.



BBA5AA



B1AA9A



98AFAB



A3ABBA

# Rectangle

The Rectangle color scheme consists of four colors that form a rectangle on the color wheel.



BBA5AA



BAA79E



98AFAB



99AEB7

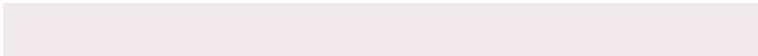


# Sweetspot

The Sweet Spot groups the original color and five complimentary colors.



BBA5AA



F2E9EB



B6A5BB



7A7476



FAFAFA



7A7A7A



# Same Dimension

The Same Dimension uses a secret algorithm to generate beautiful new colors.



BBA5AA



F2D0D8



BBABA5



5E5557



9E0024



1F0007



# Inverse Universe

The Inverse Universe completely reimagines the original color for something new.



BBA5AA



F2D0D8



A5B5BB



5E5557



9E0024

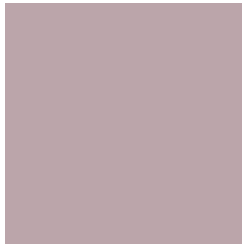


1F0007



# Previews

## White Background



This preview shows how the Hex color BBA5AA looks on a white background.

## Color Contrast Check

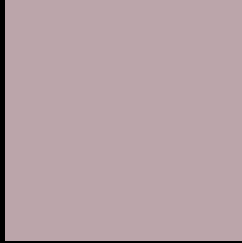
Large Text (above 18pt) WCAG AA × Fail

Any Text WCAG AA × Fail

Large Text (above 18pt) WCAG AAA × Fail

Any Text WCAG AAA × Fail

# Black Background



This preview shows how the Hex color BBA5AA looks on a black background.

## Color Contrast Check

Large Text (above 18pt) WCAG AA ✓ Pass

Any Text WCAG AA ✓ Pass

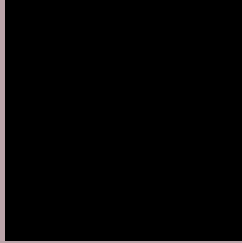
Large Text (above 18pt) WCAG AAA ✓ Pass

Any Text WCAG AAA ✓ Pass

If you want to check with other color combinations, try the [Color Contrast Checker](#).



## Hex BBA5AA Background



This preview shows how black text looks on a background with the Hex color BBA5AA.



This preview shows how white text looks on a background with the Hex color BBA5AA.

# Color Blindness Simulation

Color vision deficiency is a very complex topic, and I could not describe the different causes any better than Wikipedia does, so if you want to learn more, you should check out their [article about color blindness](#).

## Dichromacy



**Original Color**  
BBA5AA

**Protanopia**  
ADAAAD

**Deuteranopia**  
BBA5AA



# Trichromacy



**Original Color**  
BBA5AA

**Protanomaly**  
B2A8AC

**Deuteranomaly**  
BBA5AA

**Tritanomaly**  
BCA4AE

# Monochromacy



**Original Color**  
BBA5AA

**Achromatopsia**  
ACACAC

**Achromatomaly**  
B1A9AB

# CSS Examples

## Text

The CSS property to change the color of the text to Hex BBA5AA is called "color". The color property can be set on classes, ids or directly on the HTML element.

This example shows how text in the color #BBA5AA looks like.

```
.text, #text, p{  
    color:#BBA5AA  
}
```

If you want to add a text shadow in that color use the text-shadow property, you can generate a text shadow directly with our [CSS Text Shadow Generator](#).

Here you see how black text with a 4 pixel #BBA5AA colored shadow looks like.

```
.shadow{ text-shadow: 4px 4px 2px #BBA5AA
}
```

## Border

The CSS property to change the border of an element to Hex BBA5AA is called "border". The border property can be set on classes, ids or directly on the HTML element.

This example shows the color as border, it can be applied via the CSS property "border" or "border-color".

```
.border, #border, table{ border:4px solid
#BBA5AA }
```

If only the border color should be changed use the property `border-color`.

```
.border{ border-color:#BBA5AA }
```

If you want to add a box shadow in that color use:

Here you see how a box with a 4 pixel #BBA5AA colored shadow looks like.

```
.boxshadow{ -moz-box-shadow:4px 4px 4px  
4px #BBA5AA; -webkit-box-shadow:4px 4px  
4px 4px #BBA5AA; box-shadow:4px 4px 4px  
4px #BBA5AA }
```

# Background

The CSS property to change the background color of an element to Hex BBA5AA is called "background". The background property can be set on classes, ids or directly on the HTML element.

```
.background, #background, body{  
background:#BBA5AA }
```

If only the background color should be changed can be used:

```
.background{ background-color:#BBA5AA }
```

This example shows the color as background, it is applied via the CSS property "background".

To optimize and compress your CSS code, you can use our [online CSS compressor and optimizer](#) based on csstidy. If you want to create a linear or radial gradient as background or border, check our [CSS Gradient Generator](#).



Hey! You found this booklet interesting? Support Converting Colors with the new Membership Option!

The pro membership hides all ads, plus gives you double the colors in the color bucket, and more awesome pro features!

**[Learn more, Memberships starting at \\$2.50/m!](#)**

**Follow me  
on Twitter!**

@ConvertingColor