

# Converting Colors

Hex(BBA9AC)

Have a look what the booklet for  
Hex(BBA9AC) contains.

<b>Hex(BBA9AC)</b> .....	3
<b><i>Conversions</i></b> .....	4
<b><i>Details</i></b> .....	6
<b><i>Harmonies</i></b> .....	11
<b><i>Previews</i></b> .....	23
<b><i>Color Blindness Simulation</i></b> .....	26
<b><i>CSS Examples</i></b> .....	29

# **Color**

**Hex(BBA9AC)**

# Conversions

## Conversions Part 1

Format	Color
Hex	BBA9AC
RGB	187, 169, 172
RGB Percent	73%, 66%, 67%
CMY	0.2667, 0.3373, 0.3255
CMYK	0.00, 0.10, 0.08, 0.27
HSL	350°, 12%, 70%
HSV	350°, 10%, 73%
XYZ	42.1279, 41.9193, 44.9006
YIQ	174.7240, 9.7650, 4.7490

# Conversions

## Conversions Part 2

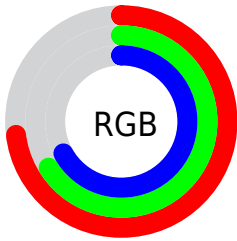
Format	Color
<a href="#">RYB</a>	<a href="#">187, 169, 172</a>
Decimal	<a href="#">12298668</a>
CIELab	<a href="#">70.82, 7.02, 0.82</a>
CIELCh	<a href="#">71, 7.068, 6.630</a>
Yxy	<a href="#">41.9193, 0.3267, 0.3251</a>
Android (android.graphics.Color)	<a href="#">4290488748</a> ( <a href="#">0xFFBBA9AC</a> )
YUV	<a href="#">174.7240, -1.3429, 10.7661</a>
Hunter-Lab	<a href="#">64.7451, 2.8412, 4.2041</a>

# Details

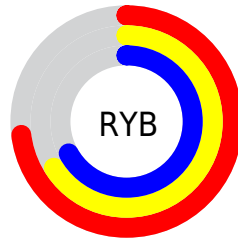
The Hex color **BBA9AC** is a light color, and the websafe version is hex **999999**. A complement of this color would be **A9BBB8**, and the grayscale version is **AFAFAF**.

A 20% lighter version of the original color is **F3E0E3**, and **867578** is the 20% darker color. If you saturate the color by 10%, you get **BB969C**, and if you desaturate by 10%, it is **BBBCBC**.

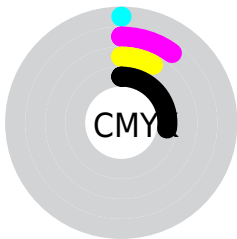
# Distribution



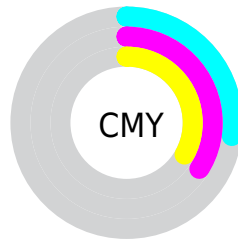
- Red (73%)
- Green (66%)
- Blue (67%)



- Red (73%)
- Yellow (66%)
- Blue (67%)



- Cyan (0%)
- Magenta (10%)
- Yellow (8%)
- Black (27%)



- Cyan (27%)
- Magenta (34%)
- Yellow (33%)

# Brightness & Saturation Gradients

These gradients show how the Hex color BBA9AC changes by changing the brightness by 10 percent. The first figure shows a shift by +10% for each color and the second figure -10%.

Similar to the brightness gradients but the following saturation gradients show a change of the Hex color BBA9AC by changing the saturation by 10% instead.



 BBA9AC

 BBA9AC

FFFFFF

 A08F91

 F3E0E3

 867578

 FFFDFF

 6C5C5F

 544547

 3D2E31

 271A1C

 130001

 000000

 BBA9AC

 BBA9AC

 BB969C

 BBBCBC

 BB848D

 BBCECB

 BB717D

 BBE1DB

 BB5E6E

 BBF4EA

 BB4C5E

 BBFFFA

 BB394F

 BBFFFF

 BB263F

 BB132F

 BB0120

# Harmonies

## Analogous

The Analogous color harmony consists of three colors that are next to each other on the color wheel.



B7AAB2



BBA9AC



BBAAA6

# Triad

The Triadic color harmony groups three colors that are evenly spaced from another and form a triangle on the color wheel.



BBA9AC



AAFA3



A2AFB9

# Complementary

The Complementary color scheme is a pair of colors which are on the opposite of each other on the color wheel.



BBA9AC



A9BBB8

# Split Complementary

Split-complementary colors differ from the complementary color scheme. The scheme consists of three colors, the original color and two neighbors of the complement color.



9EB1B5



BBA9AC



A3B1A8

# Square

The Square scheme is like the rectangle color scheme, but the four colors are evenly spaced on the color wheel.



BBA9AC



B1ADA1



9EB1AE



A8ADBA

# Rectangle

The Rectangle color scheme consists of four colors that form a rectangle on the color wheel.



BBA9AC



B9ABA3



9EB1AE



A0B0B8

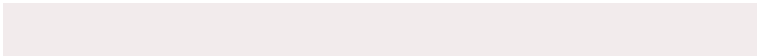


# Sweetspot

The Sweet Spot groups the original color and five complimentary colors.



BBA9AC



F2EBEC



B8A9BB



7A7676



FAFAFA



7A7A7A



# Same Dimension

The Same Dimension uses a secret algorithm to generate beautiful new colors.



BBA9AC



F2D5DA



BBAFA9



5E5556



9E001A



1F0005



# Inverse Universe

The Inverse Universe completely reimagines the original color for something new.



BBA9AC



F2D5DA



A9B5BB



5E5556



9E001A

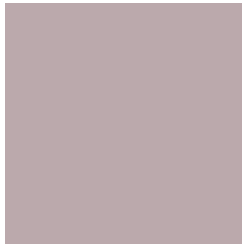


1F0005



# Previews

## White Background



This preview shows how the Hex color BBA9AC looks on a white background.

## Color Contrast Check

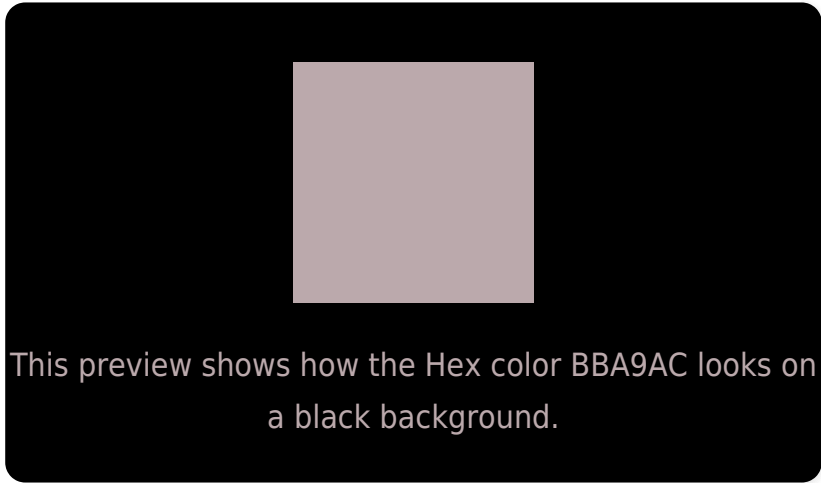
Large Text (above 18pt) WCAG AA × Fail

Any Text WCAG AA × Fail

Large Text (above 18pt) WCAG AAA × Fail

Any Text WCAG AAA × Fail

# Black Background



## Color Contrast Check

Large Text (above 18pt) WCAG AA ✓ Pass

Any Text WCAG AA ✓ Pass

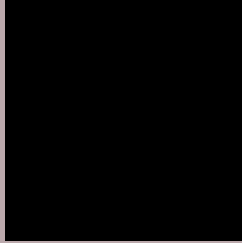
Large Text (above 18pt) WCAG AAA ✓ Pass

Any Text WCAG AAA ✓ Pass

If you want to check with other color combinations, try the [Color Contrast Checker](#).



## Hex BBA9AC Background



This preview shows how black text looks on a background with the Hex color BBA9AC.



This preview shows how white text looks on a background with the Hex color BBA9AC.

# Color Blindness Simulation

Color vision deficiency is a very complex topic, and I could not describe the different causes any better than Wikipedia does, so if you want to learn more, you should check out their [article about color blindness](#).

## Dichromacy



**Original Color**  
BBA9AC

**Protanopia**  
B0ACAE

**Deuteranopia**  
BEA8AC



**Tritanopia**  
BCA8B5

# Trichromacy



**Original Color**  
BBA9AC

**Protanomaly**  
B4ABAD

**Deuteranomaly**  
BDA8AC

**Tritanomaly**  
BCA8B2

# Monochromacy



**Original Color**  
BBA9AC

**Achromatopsia**  
AFAFAF

**Achromatomaly**  
B3ADAE

# CSS Examples

## Text

The CSS property to change the color of the text to Hex BBA9AC is called "color". The color property can be set on classes, ids or directly on the HTML element.

This example shows how text in the color #BBA9AC looks like.

```
.text, #text, p{  
    color:#BBA9AC  
}
```

If you want to add a text shadow in that color use the text-shadow property, you can generate a text shadow directly with our [CSS Text Shadow Generator](#).

Here you see how black text with a 4 pixel #BBA9AC colored shadow looks like.

```
.shadow{ text-shadow: 4px 4px 2px #BBA9AC
}
```

## Border

The CSS property to change the border of an element to Hex BBA9AC is called "border". The border property can be set on classes, ids or directly on the HTML element.

This example shows the color as border, it can be applied via the CSS property "border" or "border-color".

```
.border, #border, table{ border:4px solid
#BBA9AC }
```

If only the border color should be changed use the property `border-color`.

```
.border{ border-color:#BBA9AC }
```

If you want to add a box shadow in that color use:

Here you see how a box with a 4 pixel #BBA9AC colored shadow looks like.

```
.boxshadow{ -moz-box-shadow:4px 4px 4px  
4px #BBA9AC; -webkit-box-shadow:4px 4px  
4px 4px #BBA9AC; box-shadow:4px 4px 4px  
4px #BBA9AC }
```

# Background

The CSS property to change the background color of an element to Hex BBA9AC is called "background". The background property can be set on classes, ids or directly on the HTML element.

```
.background, #background, body{  
background:#BBA9AC }
```

If only the background color should be changed can be used:

```
.background{ background-color:#BBA9AC }
```

This example shows the color as background, it is applied via the CSS property "background".

To optimize and compress your CSS code, you can use our [online CSS compressor and optimizer](#) based on csstidy. If you want to create a linear or radial gradient as background or border, check our [CSS Gradient Generator](#).



Hey! You found this booklet interesting? Support Converting Colors with the new Membership Option!

The pro membership hides all ads, plus gives you double the colors in the color bucket, and more awesome pro features!

**[Learn more, Memberships starting at \\$2.50/m!](#)**

**Follow me  
on Twitter!**

@ConvertingColor