

# Converting Colors

Hex(BC7676)

Have a look what the booklet for  
Hex(BC7676) contains.

<b>Hex(BC7676)</b> .....	3
<b><i>Conversions</i></b> .....	4
<b><i>Details</i></b> .....	6
<b><i>Harmonies</i></b> .....	11
<b><i>Previews</i></b> .....	23
<b><i>Color Blindness Simulation</i></b> .....	26
<b><i>CSS Examples</i></b> .....	29

**Color**

**Hex(BC7676)**

# Conversions

## Conversions Part 1

<b>Format</b>	<b>Color</b>
Hex	BC7676
RGB	188, 118, 118
RGB Percent	74%, 46%, 46%
CMY	0.2627, 0.5373, 0.5373
CMYK	0.00, 0.37, 0.37, 0.26
HSL	0°, 34%, 60%
HSV	0°, 37%, 74%
XYZ	30.4875, 24.9562, 20.3497
YIQ	138.9300, 41.7200, 14.8400

# Conversions

## Conversions Part 2

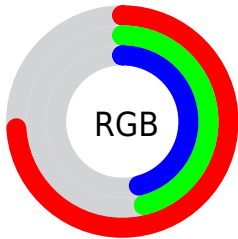
<b>Format</b>	<b>Color</b>
R <sub>Y</sub> B	188, 118, 118
Decimal	12351094
CIE Lab	57.03, 27.47, 11.57
CIE LCh	57, 29.807, 22.841
Yxy	24.9562, 0.4022, 0.3293
Android (android.graphics.Color)	4290541174 (0xFFBC7676)
YUV	138.9300, -10.3185, 43.0344
Hunter-Lab	49.9562, 21.5123, 10.8175

# Details

The Hex color **BC7676** is a dark color, and the websafe version is hex **996666**. A complement of this color would be **76BCBC**, and the grayscale version is **8B8B8B**.

A 20% lighter version of the original color is **F6ABAA**, and **844446** is the 20% darker color. If you saturate the color by 10%, you get **BC6363**, and if you desaturate by 10%, it is **BC8989**.

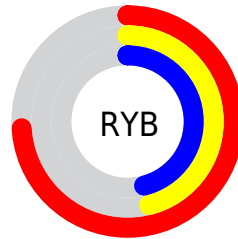
# Distribution



Red (74%)

Green (46%)

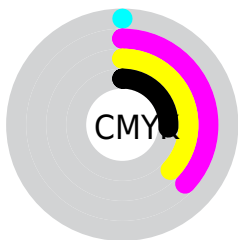
Blue (46%)



Red (74%)

Yellow (46%)

Blue (46%)

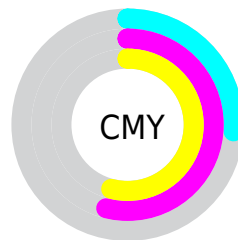


Cyan (0%)

Magenta (37%)

Yellow (37%)

Black (26%)



Cyan (26%)

Magenta (54%)

Yellow (54%)

# Brightness & Saturation Gradients

These gradients show how the Hex color BC7676 changes by changing the brightness by 10 percent. The first figure shows a shift by +10% for each color and the second figure -10%.

Similar to the brightness gradients but the following saturation gradients show a change of the Hex color BC7676 by changing the saturation by 10% instead.



 BC7676

 BC7676

FFFFFF

 A05D5D

 F6ABAA

 844446

 FFC6C5

 6A2D30

 FFE3E1

 4F151B

FFFFFFE

 370000

 1C0001

 000000

 BC7676

 BC7676

 BC6363

 BC8989

 BC5050

 BC9C9C

 BC3E3E

 BC9E9E

 BC2B2B

 BCC1C1

 BC1818

 BCD4D4

 BC0505

 BCE7E7

 BC0000

 BCFAFA

 BCFFFF

# Harmonies

## Analogous

The Analogous color harmony consists of three colors that are next to each other on the color wheel.



B77690



BC7676



B37C60

# Triad

The Triadic color harmony groups three colors that are evenly spaced from another and form a triangle on the color wheel.



BC7676



689369



5A8DBC

# Complementary

The Complementary color scheme is a pair of colors which are on the opposite of each other on the color wheel.



BC7676



76BCBC

# Split Complementary

Split-complementary colors differ from the complementary color scheme. The scheme consists of three colors, the original color and two neighbors of the complement color.



3394B2



BC7676



489782

# Square

The Square scheme is like the rectangle color scheme, but the four colors are evenly spaced on the color wheel.



BC7676



868D58



2B979C



8384B9

# Rectangle

The Rectangle color scheme consists of four colors that form a rectangle on the color wheel.



BC7676



A78258



2B979C



4C90BA

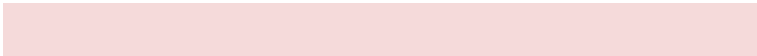


# Sweetspot

The Sweet Spot groups the original color and five complimentary colors.



BC7676



F5DADA



BC76BC



7A6A6A



FAFAFA



7A7A7A



# Same Dimension

The Same Dimension uses a secret algorithm to generate beautiful new colors.



BC7676



F58787



BC9976



5E5555



9E0000



1F0000



# Inverse Universe

The Inverse Universe completely reimagines the original color for something new.



76BCBC



87F5F5



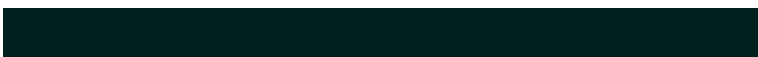
7699BC



555E5E



009E9E

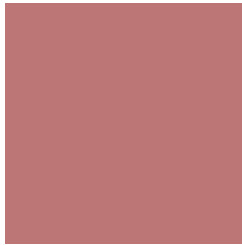


001F1F



# Previews

## White Background



This preview shows how the Hex color BC7676 looks on a white background.

## Color Contrast Check

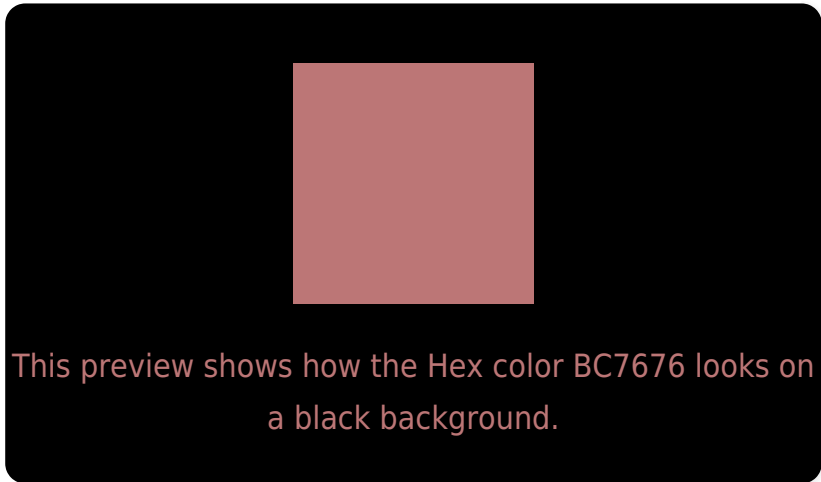
Large Text (above 18pt) WCAG AA ✓ Pass

Any Text WCAG AA × Fail

Large Text (above 18pt) WCAG AAA × Fail

Any Text WCAG AAA × Fail

# Black Background



## Color Contrast Check

Large Text (above 18pt) WCAG AA ✓ Pass

Any Text WCAG AA ✓ Pass

Large Text (above 18pt) WCAG AAA ✓ Pass

Any Text WCAG AAA × Fail

If you want to check with other color combinations, try the [Color Contrast Checker](#).



## Hex BC7676 Background



This preview shows how black text looks on a background with the Hex color BC7676.



This preview shows how white text looks on a background with the Hex color BC7676.

# Color Blindness Simulation

Color vision deficiency is a very complex topic, and I could not describe the different causes any better than Wikipedia does, so if you want to learn more, you should check out their [article about color blindness](#).

## Dichromacy





**Tritanopia**  
BD757E

# Trichromacy



**Original Color**  
BC7676

**Protanomaly**  
9F827C

**Deuteranomaly**  
A97F74

**Tritanomaly**  
BD757B

# Monochromacy



**Original Color**  
BC7676

**Achromatopsia**  
8B8B8B

**Achromatomaly**  
9D8383

# CSS Examples

## Text

The CSS property to change the color of the text to Hex BC7676 is called "color". The color property can be set on classes, ids or directly on the HTML element.

This example shows how text in the color #BC7676 looks like.

```
.text, #text, p{  
    color:#BC7676  
}
```

If you want to add a text shadow in that color use the text-shadow property, you can generate a text shadow directly with our [CSS Text Shadow Generator](#).

Here you see how black text with a 4 pixel #BC7676 colored shadow looks like.

```
.shadow{ text-shadow: 4px 4px 2px #BC7676
}
```

## Border

The CSS property to change the border of an element to Hex BC7676 is called "border". The border property can be set on classes, ids or directly on the HTML element.

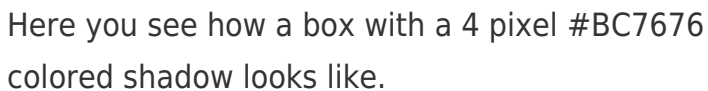
This example shows the color as border, it can be applied via the CSS property "border" or "border-color".

```
.border, #border, table{ border:4px solid
#BC7676 }
```

If only the border color should be changed use the property `border-color`.

```
.border{ border-color:#BC7676 }
```

If you want to add a box shadow in that color use:



Here you see how a box with a 4 pixel #BC7676 colored shadow looks like.

```
.boxshadow{ -moz-box-shadow:4px 4px 4px  
4px #BC7676; -webkit-box-shadow:4px 4px  
4px 4px #BC7676; box-shadow:4px 4px 4px  
4px #BC7676 }
```

# Background

The CSS property to change the background color of an element to Hex BC7676 is called "background". The background property can be set on classes, ids or directly on the HTML element.

```
.background, #background, body{  
background:#BC7676 }
```

If only the background color should be changed can be used:

```
.background{ background-color:#BC7676 }
```

This example shows the color as background, it is applied via the CSS property "background".

To optimize and compress your CSS code, you can use our [online CSS compressor and optimizer](#) based on csstidy. If you want to create a linear or radial gradient as background or border, check our [CSS Gradient Generator](#).



Hey! You found this booklet interesting? Support Converting Colors with the new Membership Option!

The pro membership hides all ads, plus gives you double the colors in the color bucket, and more awesome pro features!

**[Learn more, Memberships starting at \\$2.50/m!](#)**

**Follow me  
on Twitter!**

@ConvertingColor