

# Converting Colors

Hex(BC7B74)

Have a look what the booklet for  
Hex(BC7B74) contains.

<b>Hex(BC7B74)</b> .....	3
<i><b>Conversions</b></i> .....	4
<i><b>Details</b></i> .....	6
<i><b>Harmonies</b></i> .....	11
<i><b>Previews</b></i> .....	23
<i><b>Color Blindness Simulation</b></i> .....	26
<i><b>CSS Examples</b></i> .....	29

# Color

Hex(**BC7B74**)

# Conversions

## Conversions Part 1

Format	Color
Hex	BC7B74
RGB	188, 123, 116
RGB Percent	74%, 48%, 45%
CMY	0.2627, 0.5176, 0.5451
CMYK	0.00, 0.35, 0.38, 0.26
HSL	6°, 35%, 60%
HSV	6°, 38%, 74%
XYZ	30.9744, 26.1182, 19.9318
YIQ	141.6370, 40.9870, 11.6030

# Conversions

## Conversions Part 2

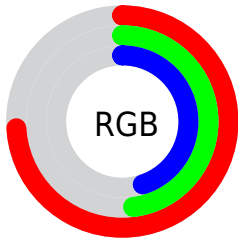
<b>Format</b>	<b>Color</b>
<b>R<sub>YB</sub></b>	188, 124, 116
Decimal	12352372
CIE Lab	58.15, 24.47, 14.28
CIE LCh	58, 28.334, 30.272
Yxy	26.1182, 0.4021, 0.3391
Android (android.graphics.Color)	4290542452 (0xFFBC7B74)
YUV	141.6370, -12.6390, 40.6604
Hunter-Lab	51.1060, 18.7500, 12.6506

# Details

The Hex color **BC7B74** is a dark color, and the websafe version is hex **996666**. A complement of this color would be **74B5BC**, and the grayscale version is **8E8E8E**.

A 20% lighter version of the original color is **F6B0A8**, and **844944** is the 20% darker color. If you saturate the color by 10%, you get **BC6A61**, and if you desaturate by 10%, it is **BC8C87**.

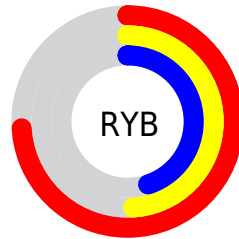
# Distribution



Red (74%)

Green (48%)

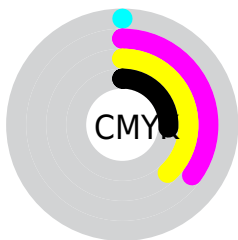
Blue (45%)



Red (74%)

Yellow (49%)

Blue (45%)

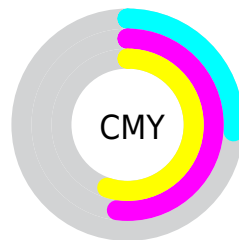


Cyan (0%)

Magenta (35%)

Yellow (38%)

Black (26%)



Cyan (26%)

Magenta (52%)

Yellow (55%)

# Brightness & Saturation Gradients

These gradients show how the Hex color BC7B74 changes by changing the brightness by 10 percent. The first figure shows a shift by +10% for each color and the second figure -10%.

Similar to the brightness gradients but the following saturation gradients show a change of the Hex color BC7B74 by changing the saturation by 10% instead.



 BC7B74

 BC7B74

FFFFFF

 A0625B

 F6B0A8

 844944

 FFCCC3

 6A322E

 FFE8DF

 501B19

FFFFFFC

 370400

 1E0001

 000000

 BC7B74

 BC7B74

 BC6A61

 BC8C87

 BC594E

 BC9D9A

 BC483C

 BCAEAC

 BC3729

 BCBFBF

 BC2616

 BCD0D2

 BC1503

 BCE1E5

 BC1200

 BCF2F8

 BCFFFF

# Harmonies

## Analogous

The Analogous color harmony consists of three colors that are next to each other on the color wheel.



BB798C



BC7B74



B18261

# Triad

The Triadic color harmony groups three colors that are evenly spaced from another and form a triangle on the color wheel.



BC7B74



659772



6A8EBD

# Complementary

The Complementary color scheme is a pair of colors which are on the opposite of each other on the color wheel.



BC7B74



74B5BC

# Split Complementary

Split-complementary colors differ from the complementary color scheme. The scheme consists of three colors, the original color and two neighbors of the complement color.



4695B6



BC7B74



48998B

# Square

The Square scheme is like the rectangle color scheme, but the four colors are evenly spaced on the color wheel.



BC7B74



829260



3699A4



8F85B7

# Rectangle

The Rectangle color scheme consists of four colors that form a rectangle on the color wheel.



BC7B74



A4875B



3699A4



5E91BC

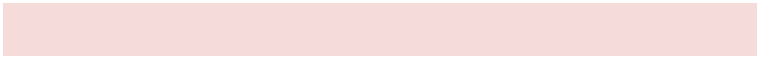


# Sweetspot

The Sweet Spot groups the original color and five complimentary colors.



BC7B74



F5DCDA



BC74B6



7A6C6A



FAFAFA



7A7A7A



# Same Dimension

The Same Dimension uses a secret algorithm to generate beautiful new colors.



BC7B74



F58F84



BC9E74



5E5655



9E0F00



1F0300



# Inverse Universe

The Inverse Universe completely reimagines the original color for something new.



74B5BC



84EAF5



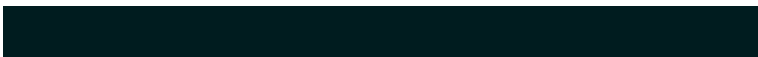
7492BC



555D5E



008F9E

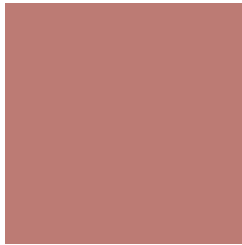


001C1F



# Previews

## White Background



This preview shows how the Hex color BC7B74 looks on a white background.

## Color Contrast Check

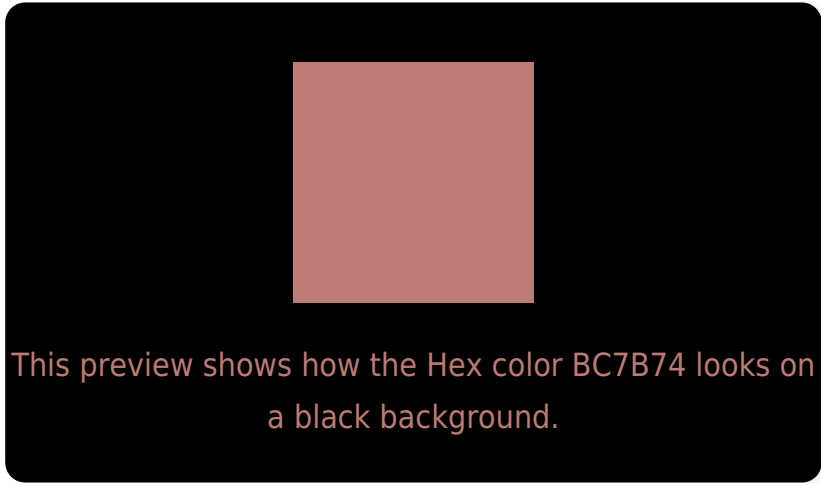
Large Text (above 18pt) WCAG AA ✓ Pass

Any Text WCAG AA × Fail

Large Text (above 18pt) WCAG AAA × Fail

Any Text WCAG AAA × Fail

# Black Background



## Color Contrast Check

Large Text (above 18pt) WCAG AA ✓ Pass

Any Text WCAG AA ✓ Pass

Large Text (above 18pt) WCAG AAA ✓ Pass

Any Text WCAG AAA × Fail

If you want to check with other color combinations, try the [Color Contrast Checker](#).



## Hex BC7B74 Background



This preview shows how black text looks on a background with the Hex color BC7B74.

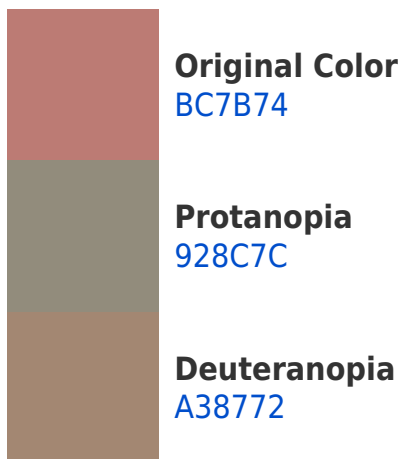


This preview shows how white text looks on a background with the Hex color BC7B74.

# Color Blindness Simulation

Color vision deficiency is a very complex topic, and I could not describe the different causes any better than Wikipedia does, so if you want to learn more, you should check out their [article about color blindness](#).

## Dichromacy





**Tritanopia**  
BD7982

# Trichromacy



**Original Color**  
BC7B74

**Protanomaly**  
A18679

**Deuteranomaly**  
AC8373

**Tritanomaly**  
BD7A7D

# Monochromacy



**Original Color**  
BC7B74

**Achromatopsia**  
8E8E8E

**Achromatomaly**  
9F8785

# CSS Examples

## Text

The CSS property to change the color of the text to Hex BC7B74 is called "color". The color property can be set on classes, ids or directly on the HTML element.

This example shows how text in the color #BC7B74 looks like.

```
.text, #text, p{  
    color:#BC7B74  
}
```

If you want to add a text shadow in that color use the text-shadow property, you can generate a text shadow directly with our [CSS Text Shadow Generator](#).

Here you see how black text with a 4 pixel #BC7B74 colored shadow looks like.

```
.shadow{ text-shadow: 4px 4px 2px #BC7B74
}
```

## Border

The CSS property to change the border of an element to Hex BC7B74 is called "border". The border property can be set on classes, ids or directly on the HTML element.

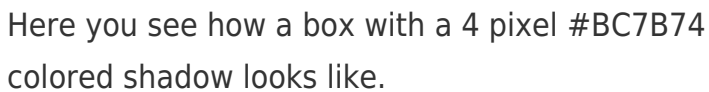
This example shows the color as border, it can be applied via the CSS property "border" or "border-color".

```
.border, #border, table{ border:4px solid
#BC7B74 }
```

If only the border color should be changed use the property `border-color`.

```
.border{ border-color:#BC7B74 }
```

If you want to add a box shadow in that color use:



Here you see how a box with a 4 pixel #BC7B74 colored shadow looks like.

```
.boxshadow{ -moz-box-shadow:4px 4px 4px  
4px #BC7B74; -webkit-box-shadow:4px 4px  
4px 4px #BC7B74; box-shadow:4px 4px 4px  
4px #BC7B74 }
```

# Background

The CSS property to change the background color of an element to Hex BC7B74 is called "background". The background property can be set on classes, ids or directly on the HTML element.

```
.background, #background, body{  
background:#BC7B74 }
```

If only the background color should be changed can be used:

```
.background{ background-color:#BC7B74 }
```

This example shows the color as background, it is applied via the CSS property "background".

To optimize and compress your CSS code, you can use our [online CSS compressor and optimizer](#) based on csstidy. If you want to create a linear or radial gradient as background or border, check our [CSS Gradient Generator](#).



Hey! You found this booklet interesting? Support Converting Colors with the new Membership Option!

The pro membership hides all ads, plus gives you double the colors in the color bucket, and more awesome pro features!

**[Learn more, Memberships starting at \\$2.50/m!](#)**

**Follow me  
on Twitter!**

@ConvertingColor