

# Converting Colors

Hex(BC7B7C)

Have a look what the booklet for  
Hex(BC7B7C) contains.

<b>Hex(BC7B7C)</b> .....	3
<b><i>Conversions</i></b> .....	4
<b><i>Details</i></b> .....	6
<b><i>Harmonies</i></b> .....	11
<b><i>Previews</i></b> .....	23
<b><i>Color Blindness Simulation</i></b> .....	26
<b><i>CSS Examples</i></b> .....	29

# Color

Hex(**BC7B7C**)

# Conversions

## Conversions Part 1

<b>Format</b>	<b>Color</b>
Hex	BC7B7C
RGB	188, 123, 124
RGB Percent	74%, 48%, 49%
CMY	0.2627, 0.5176, 0.5137
CMYK	0.00, 0.35, 0.34, 0.26
HSL	359°, 33%, 61%
HSV	359°, 35%, 74%
XYZ	31.4601, 26.3125, 22.4895
YIQ	142.5490, 38.4190, 14.0910

# Conversions

## Conversions Part 2

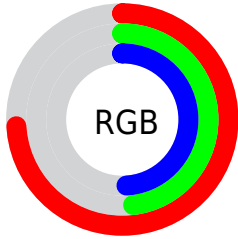
Format	Color
R <sub>Y</sub> B	188, 123, 124
Decimal	12352380
CIE Lab	58.33, 25.47, 9.94
CIE LCh	58, 27.339, 21.312
Yxy	26.3125, 0.3920, 0.3278
Android (android.graphics.Color)	4290542460 (0xFFBC7B7C)
YUV	142.5490, -9.1447, 39.8605
Hunter-Lab	51.2957, 19.7080, 9.9126

# Details

The Hex color **BC7B7C** is a dark color, and the websafe version is hex **996666**. A complement of this color would be **7BBCBB**, and the grayscale version is **8F8F8F**.

A 20% lighter version of the original color is **F6B0B0**, and **85494B** is the 20% darker color. If you saturate the color by 10%, you get **BC6869**, and if you desaturate by 10%, it is **BC8E8F**.

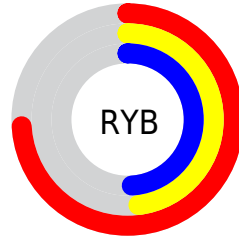
# Distribution



Red (74%)

Green (48%)

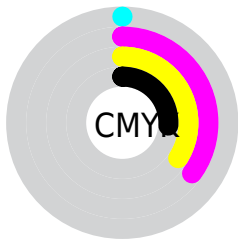
Blue (49%)



Red (74%)

Yellow (48%)

Blue (49%)

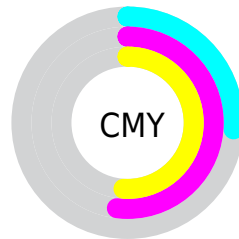


Cyan (0%)

Magenta (35%)

Yellow (34%)

Black (26%)



Cyan (26%)

Magenta (52%)

Yellow (51%)

# Brightness & Saturation Gradients

These gradients show how the Hex color BC7B7C changes by changing the brightness by 10 percent. The first figure shows a shift by +10% for each color and the second figure -10%.

Similar to the brightness gradients but the following saturation gradients show a change of the Hex color BC7B7C by changing the saturation by 10% instead.



 BC7B7C

 BC7B7C

FFFFFF

 A06263

 F6B0B0

 85494B

 FFCCCC

 6A3235

 FFE8E8

 501B20

 370408

 200001

 000000

 BC7B7C

 BC7B7C

 BC6869

 BC8E8F

 BC5557

 BCA1A1

 BC4344

 BCB3B4

 BC3032

 BCC6C6

 BC1D1F

 BCD9D9

 BC0A0D

 BCECEB

 BC0003

 BCFFFE

 BCFFFF

# Harmonies

## Analogous

The Analogous color harmony consists of three colors that are next to each other on the color wheel.



B77B94



BC7B7C



B58068

# Triad

The Triadic color harmony groups three colors that are evenly spaced from another and form a triangle on the color wheel.



BC7B7C



70966E



6291BB

# Complementary

The Complementary color scheme is a pair of colors which are on the opposite of each other on the color wheel.



BC7B7C



7BBCBB

# Split Complementary

Split-complementary colors differ from the complementary color scheme. The scheme consists of three colors, the original color and two neighbors of the complement color.



4396B1



BC7B7C



549984

# Square

The Square scheme is like the rectangle color scheme, but the four colors are evenly spaced on the color wheel.



BC7B7C



8B905F



3F999D



8689B9

# Rectangle

The Rectangle color scheme consists of four colors that form a rectangle on the color wheel.



BC7B7C



AA865F



3F999D



5693B9



# Sweetspot

The Sweet Spot groups the original color and five complimentary colors.



BC7B7C



F5DCDD



BB7BBC



7A6C6C



FAFAFA



7A7A7A



# Same Dimension

The Same Dimension uses a secret algorithm to generate beautiful new colors.



BC7B7C



F59092



BC9A7B



5E5555



9E0002



1F0000



# Inverse Universe

The Inverse Universe completely reimagines the original color for something new.



BC7B7C



F59092



7B9DBC



5E5555



9E0002

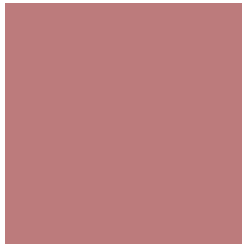


1F0000



# Previews

## White Background



This preview shows how the Hex color BC7B7C looks on a white background.

## Color Contrast Check

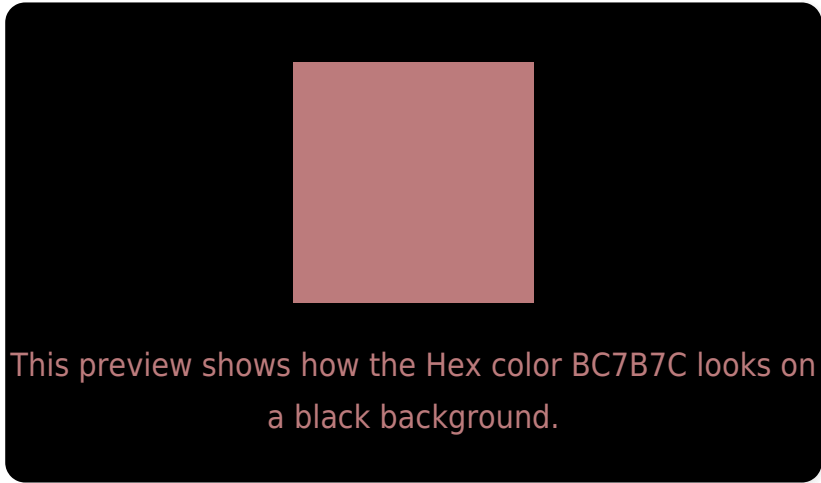
Large Text (above 18pt) WCAG AA ✓ Pass

Any Text WCAG AA ✗ Fail

Large Text (above 18pt) WCAG AAA ✗ Fail

Any Text WCAG AAA ✗ Fail

# Black Background



## Color Contrast Check

Large Text (above 18pt) WCAG AA ✓ Pass

Any Text WCAG AA ✓ Pass

Large Text (above 18pt) WCAG AAA ✓ Pass

Any Text WCAG AAA × Fail

If you want to check with other color combinations, try the [Color Contrast Checker](#).



## Hex BC7B7C Background



This preview shows how black text looks on a background with the Hex color BC7B7C.

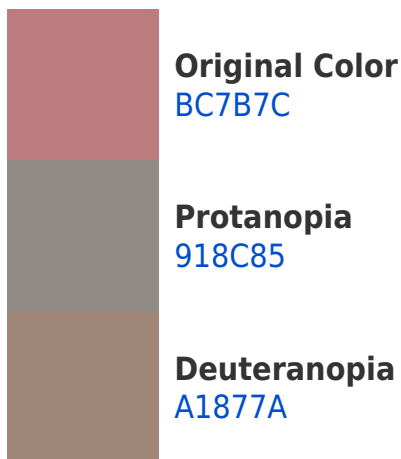


This preview shows how white text looks on a background with the Hex color BC7B7C.

# Color Blindness Simulation

Color vision deficiency is a very complex topic, and I could not describe the different causes any better than Wikipedia does, so if you want to learn more, you should check out their [article about color blindness](#).

## Dichromacy





**Tritanopia**  
BD7A83

# Trichromacy



**Original Color**  
BC7B7C

**Protanomaly**  
A18682

**Deuteranomaly**  
AB837B

**Tritanomaly**  
BD7A80

# Monochromacy



**Original Color**  
BC7B7C

**Achromatopsia**  
8F8F8F

**Achromatomaly**  
9F8888

# CSS Examples

## Text

The CSS property to change the color of the text to Hex BC7B7C is called "color". The color property can be set on classes, ids or directly on the HTML element.

This example shows how text in the color #BC7B7C looks like.

```
.text, #text, p{  
    color:#BC7B7C  
}
```

If you want to add a text shadow in that color use the text-shadow property, you can generate a text shadow directly with our [CSS Text Shadow Generator](#).

Here you see how black text with a 4 pixel #BC7B7C colored shadow looks like.

```
.shadow{ text-shadow: 4px 4px 2px #BC7B7C
}
```

## Border

The CSS property to change the border of an element to Hex BC7B7C is called "border". The border property can be set on classes, ids or directly on the HTML element.

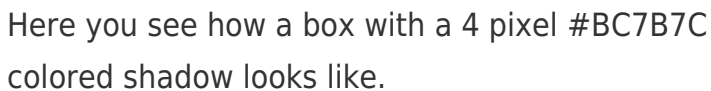
This example shows the color as border, it can be applied via the CSS property "border" or "border-color".

```
.border, #border, table{ border:4px solid
#BC7B7C }
```

If only the border color should be changed use the property `border-color`.

```
.border{ border-color:#BC7B7C }
```

If you want to add a box shadow in that color use:



Here you see how a box with a 4 pixel `#BC7B7C` colored shadow looks like.

```
.boxshadow{ -moz-box-shadow:4px 4px 4px  
4px #BC7B7C; -webkit-box-shadow:4px 4px  
4px 4px #BC7B7C; box-shadow:4px 4px 4px  
4px #BC7B7C }
```

# Background

The CSS property to change the background color of an element to Hex BC7B7C is called "background". The background property can be set on classes, ids or directly on the HTML element.

```
.background, #background, body{  
background:#BC7B7C }
```

If only the background color should be changed can be used:

```
.background{ background-color:#BC7B7C }
```

This example shows the color as background, it is applied via the CSS property "background".

To optimize and compress your CSS code, you can use our [online CSS compressor and optimizer](#) based on csstidy. If you want to create a linear or radial gradient as background or border, check our [CSS Gradient Generator](#).



Hey! You found this booklet interesting? Support Converting Colors with the new Membership Option!

The pro membership hides all ads, plus gives you double the colors in the color bucket, and more awesome pro features!

**[Learn more, Memberships starting at \\$2.50/m!](#)**

**Follow me  
on Twitter!**

@ConvertingColor