

Converting Colors

Hex(BC7E82)

Have a look what the booklet for
Hex(BC7E82) contains.

Hex(BC7E82)	3
<i>Conversions</i>	4
<i>Details</i>	6
<i>Harmonies</i>	11
<i>Previews</i>	23
<i>Color Blindness Simulation</i>	26
<i>CSS Examples</i>	29

Color

Hex(BC7E82)

Conversions

Conversions Part 1

Format	Color
Hex	BC7E82
RGB	188, 126, 130
RGB Percent	74%, 49%, 51%
CMY	0.2627, 0.5059, 0.4902
CMYK	0.00, 0.33, 0.31, 0.26
HSL	356°, 32%, 62%
HSV	356°, 33%, 74%
XYZ	32.2292, 27.2248, 24.6753
YIQ	144.9940, 35.6680, 14.3880

Conversions

Conversions Part 2

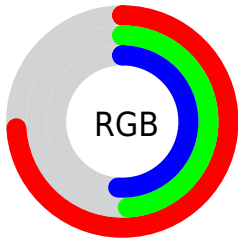
Format	Color
R_{YB}	188, 126, 130
Decimal	12353154
CIE _{Lab}	59.18, 24.60, 7.69
CIE _{LCh}	59, 25.777, 17.352
Yxy	27.2248, 0.3831, 0.3236
Android (android.graphics.Color)	4290543234 (0xFFBC7E82)
YUV	144.9940, -7.3920, 37.7163
Hunter-Lab	52.1774, 18.9463, 8.4852

Details

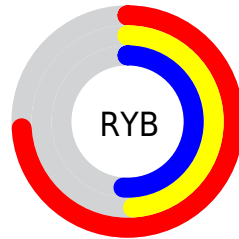
The Hex color **BC7E82** is a dark color, and the websafe version is hex **CC9999**. A complement of this color would be **7EBCB8**, and the grayscale version is **919191**.

A 20% lighter version of the original color is **F6B3B7**, and **854C51** is the 20% darker color. If you saturate the color by 10%, you get **BC6B70**, and if you desaturate by 10%, it is **BC9194**.

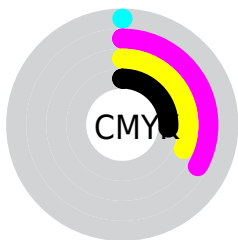
Distribution



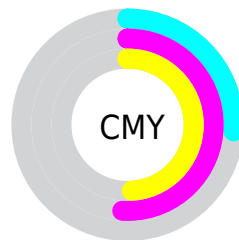
- Red (74%)
- Green (49%)
- Blue (51%)



- Red (74%)
- Yellow (49%)
- Blue (51%)



- Cyan (0%)
- Magenta (33%)
- Yellow (31%)
- Black (26%)



- Cyan (26%)
- Magenta (51%)
- Yellow (49%)

Brightness & Saturation Gradients

These gradients show how the Hex color BC7E82 changes by changing the brightness by 10 percent. The first figure shows a shift by +10% for each color and the second figure -10%.

Similar to the brightness gradients but the following saturation gradients show a change of the Hex color BC7E82 by changing the saturation by 10% instead.

 BC7E82

 BC7E82

FFFFFF

 A06569

 F6B3B7

 854C51

 FFCFD2

 6B353A

 FFEBEF

 511E24

 38070F

 230001

 000000

 BC7E82

 BC7E82

 BC6B70

 BC9194

 BC585F

 BCA4A5

 BC464D

 BCB6B7

 BC333C

 BCC9C8

 BC202A

 BCDCDA

 BC0D18

 BCEFEC

 BC000C

 BCFFFD

 BCFFFF

Harmonies

Analogous

The Analogous color harmony consists of three colors that are next to each other on the color wheel.



B57F99



BC7E82



B7826E

Triad

The Triadic color harmony groups three colors that are evenly spaced from another and form a triangle on the color wheel.



BC7E82



77976F



6393BA

Complementary

The Complementary color scheme is a pair of colors which are on the opposite of each other on the color wheel.



BC7E82



7EBCB8

Split Complementary

Split-complementary colors differ from the complementary color scheme. The scheme consists of three colors, the original color and two neighbors of the complement color.



4A99AF



BC7E82



5D9A84

Square

The Square scheme is like the rectangle color scheme, but the four colors are evenly spaced on the color wheel.



BC7E82



919163



499B9B



848CB9

Rectangle

The Rectangle color scheme consists of four colors that form a rectangle on the color wheel.



BC7E82



AD8765



499B9B



5995B8

Sweetspot

The Sweet Spot groups the original color and five complimentary colors.



BC7E82



F5DCDE



B87EBC



7A6C6D



FAFAFA



7A7A7A

Same Dimension

The Same Dimension uses a secret algorithm to generate beautiful new colors.



BC7E82



F59399



BC997E



5E5556



9E000A



1F0002

Inverse Universe

The Inverse Universe completely reimagines the original color for something new.



BC7E82



F59399



7EA1BC



5E5556



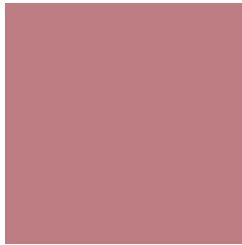
9E000A



1F0002

Previews

White Background



This preview shows how the Hex color BC7E82 looks on a white background.

Color Contrast Check

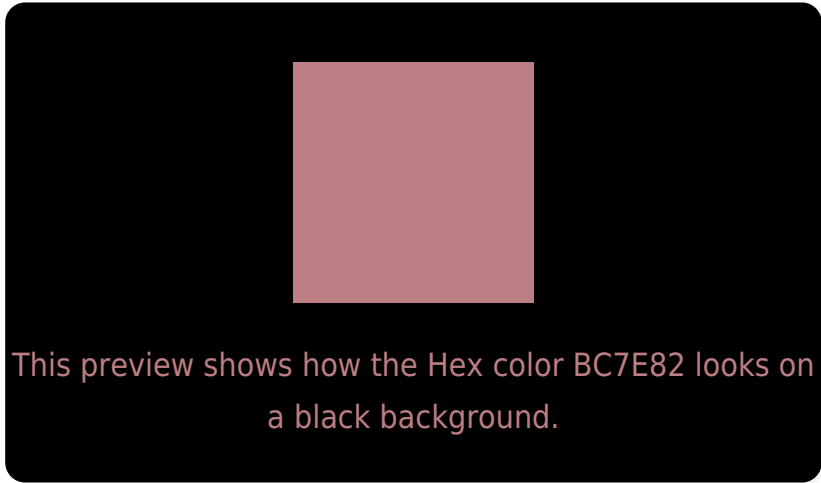
Large Text (above 18pt) WCAG AA ✓ Pass

Any Text WCAG AA × Fail

Large Text (above 18pt) WCAG AAA × Fail

Any Text WCAG AAA × Fail

Black Background



Color Contrast Check

Large Text (above 18pt) WCAG AA ✓ Pass

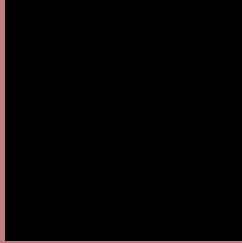
Any Text WCAG AA ✓ Pass

Large Text (above 18pt) WCAG AAA ✓ Pass

Any Text WCAG AAA × Fail

If you want to check with other color combinations, try the [Color Contrast Checker](#).

Hex BC7E82 Background



This preview shows how black text looks on a background with the Hex color BC7E82.



This preview shows how white text looks on a background with the Hex color BC7E82.

Color Blindness Simulation

Color vision deficiency is a very complex topic, and I could not describe the different causes any better than Wikipedia does, so if you want to learn more, you should check out their [article about color blindness](#).

Dichromacy



Original Color
BC7E82

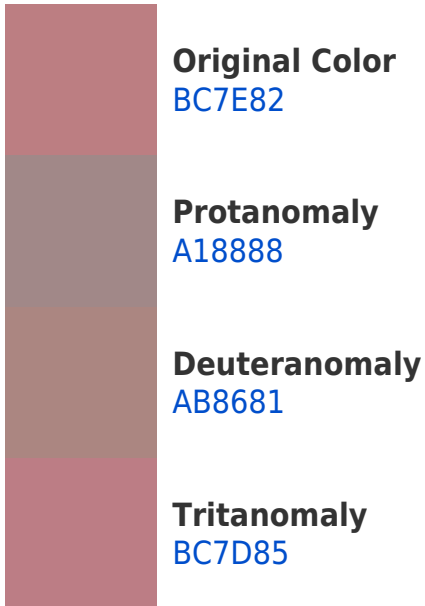
Protanopia
928E8B

Deuteranopia
A28A80

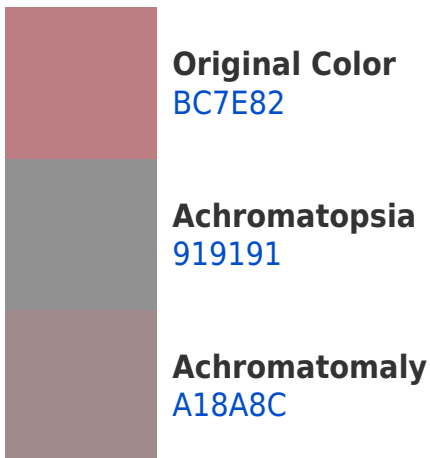


Tritanopia
BC7D87

Trichromacy



Monochromacy



CSS Examples

Text

The CSS property to change the color of the text to Hex BC7E82 is called "color". The color property can be set on classes, ids or directly on the HTML element.

This example shows how text in the color #BC7E82 looks like.

```
.text, #text, p{  
    color:#BC7E82  
}
```

If you want to add a text shadow in that color use the text-shadow property, you can generate a text shadow directly with our [CSS Text Shadow Generator](#).

Here you see how black text with a 4 pixel #BC7E82 colored shadow looks like.

```
.shadow{ text-shadow: 4px 4px 2px #BC7E82
}
```

Border

The CSS property to change the border of an element to Hex BC7E82 is called "border". The border property can be set on classes, ids or directly on the HTML element.

This example shows the color as border, it can be applied via the CSS property "border" or "border-color".

```
.border, #border, table{ border:4px solid
#BC7E82 }
```

If only the border color should be changed use the property `border-color`.

```
.border{ border-color:#BC7E82 }
```

If you want to add a box shadow in that color use:

Here you see how a box with a 4 pixel #BC7E82 colored shadow looks like.

```
.boxshadow{ -moz-box-shadow:4px 4px 4px  
4px #BC7E82; -webkit-box-shadow:4px 4px  
4px 4px #BC7E82; box-shadow:4px 4px 4px  
4px #BC7E82 }
```

Background

The CSS property to change the background color of an element to Hex BC7E82 is called "background". The background property can be set on classes, ids or directly on the HTML element.

```
.background, #background, body{  
background:#BC7E82 }
```

If only the background color should be changed can be used:

```
.background{ background-color:#BC7E82 }
```

This example shows the color as background, it is applied via the CSS property "background".

To optimize and compress your CSS code, you can use our [online CSS compressor and optimizer](#) based on csstidy. If you want to create a linear or radial gradient as background or border, check our [CSS Gradient Generator](#).

Hey! You found this booklet interesting? Support Converting Colors with the new Membership Option!

The pro membership hides all ads, plus gives you double the colors in the color bucket, and more awesome pro features!

[Learn more, Memberships starting at \\$2.50/m!](#)

**Follow me
on Twitter!**

@ConvertingColor