

# Converting Colors

Hex(BC8A87)

Have a look what the booklet for  
Hex(BC8A87) contains.

<b>Hex(BC8A87)</b> .....	3
<i><b>Conversions</b></i> .....	4
<i><b>Details</b></i> .....	6
<i><b>Harmonies</b></i> .....	11
<i><b>Previews</b></i> .....	23
<i><b>Color Blindness Simulation</b></i> .....	26
<i><b>CSS Examples</b></i> .....	29

# **Color**

**Hex(BC8A87)**

# Conversions

## Conversions Part 1

Format	Color
Hex	BC8A87
RGB	188, 138, 135
RGB Percent	74%, 54%, 53%
CMY	0.2627, 0.4588, 0.4706
CMYK	0.00, 0.27, 0.28, 0.26
HSL	3°, 28%, 63%
HSV	3°, 28%, 74%
XYZ	34.2007, 30.6176, 27.0289
YIQ	152.6080, 30.7630, 9.6670

# Conversions

## Conversions Part 2

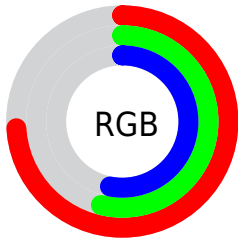
Format	Color
<a href="#">RYB</a>	<a href="#">188, 138, 135</a>
Decimal	<a href="#">12356231</a>
CIELab	<a href="#">62.18, 18.64, 9.10</a>
CIELCh	<a href="#">62, 20.740, 26.036</a>
Yxy	<a href="#">30.6176, 0.3724, 0.3334</a>
Android (android.graphics.Color)	<a href="#">4290546311 (0xFFBC8A87)</a>
YUV	<a href="#">152.6080, -8.6807, 31.0388</a>
Hunter-Lab	<a href="#">55.3332, 13.4954, 9.7715</a>

# Details

The Hex color **BC8A87** is a light color, and the websafe version is hex **CC9999**. A complement of this color would be **87B9BC**, and the grayscale version is **999999**.

A 20% lighter version of the original color is **F5C0BC**, and **855855** is the 20% darker color. If you saturate the color by 10%, you get **BC7874**, and if you desaturate by 10%, it is **BC9C9A**.

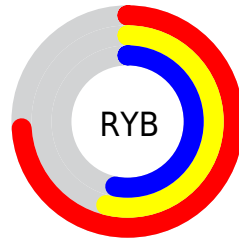
# Distribution



Red (74%)

Green (54%)

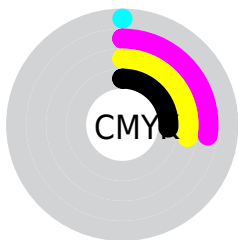
Blue (53%)



Red (74%)

Yellow (54%)

Blue (53%)

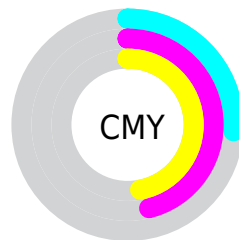


Cyan (0%)

Magenta (27%)

Yellow (28%)

Black (26%)



Cyan (26%)

Magenta (46%)

Yellow (47%)

# Brightness & Saturation Gradients

These gradients show how the Hex color BC8A87 changes by changing the brightness by 10 percent. The first figure shows a shift by +10% for each color and the second figure -10%.

Similar to the brightness gradients but the following saturation gradients show a change of the Hex color BC8A87 by changing the saturation by 10% instead.



 BC8A87

 BC8A87

FFFFFF

 A0706E

 F5C0BC

 855855

 FFDCD8

 6B403E

 FFF8F4

 522928

 391414

 250000

 000000

 BC8A87

 BC8A87

 BC7874

 BC9C9A

 BC6761

 BCADAD

 BC554F

 BCBFBF

 BC433C

 BCD1D2

 BC3129

 BCE3E5

 BC2016

 BCF4F8

 BC0E03

 BCFFFF

 BC0B00

# Harmonies

## Analogous

The Analogous color harmony consists of three colors that are next to each other on the color wheel.



B98999



BC8A87



B58E78

# Triad

The Triadic color harmony groups three colors that are evenly spaced from another and form a triangle on the color wheel.



BC8A87



7E9E81



7D99BB

# Complementary

The Complementary color scheme is a pair of colors which are on the opposite of each other on the color wheel.



BC8A87



87B9BC

# Split Complementary

Split-complementary colors differ from the complementary color scheme. The scheme consists of three colors, the original color and two neighbors of the complement color.



699EB4



BC8A87



6BA193

# Square

The Square scheme is like the rectangle color scheme, but the four colors are evenly spaced on the color wheel.



BC8A87



939A75



62A0A6



9692B7

# Rectangle

The Rectangle color scheme consists of four colors that form a rectangle on the color wheel.



BC8A87



AC9273



62A0A6



759BB9

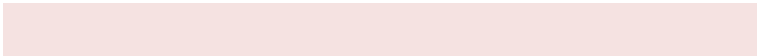


# Sweetspot

The Sweet Spot groups the original color and five complimentary colors.



BC8A87



F5E2E1



BC87B9



7A6F6E



FAFAFA



7A7A7A



# Same Dimension

The Same Dimension uses a secret algorithm to generate beautiful new colors.



BC8A87



F5A6A2



BCA487



5E5555



9E0900



1F0200

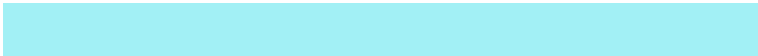


# Inverse Universe

The Inverse Universe completely reimagines the original color for something new.



87B9BC



A2F0F5



879FBC



555E5E



00959E

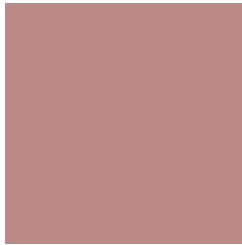


001D1F



# Previews

## White Background



This preview shows how the Hex color BC8A87 looks on a white background.

## Color Contrast Check

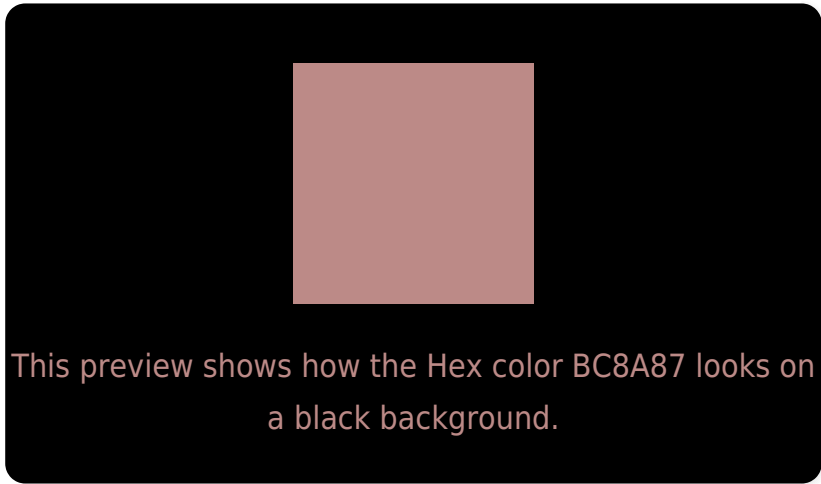
Large Text (above 18pt) WCAG AA × Fail

Any Text WCAG AA × Fail

Large Text (above 18pt) WCAG AAA × Fail

Any Text WCAG AAA × Fail

# Black Background



## Color Contrast Check

Large Text (above 18pt) WCAG AA ✓ Pass

Any Text WCAG AA ✓ Pass

Large Text (above 18pt) WCAG AAA ✓ Pass

Any Text WCAG AAA ✓ Pass

If you want to check with other color combinations, try the [Color Contrast Checker](#).



## Hex BC8A87 Background



This preview shows how black text looks on a background with the Hex color BC8A87.



This preview shows how white text looks on a background with the Hex color BC8A87.

# Color Blindness Simulation

Color vision deficiency is a very complex topic, and I could not describe the different causes any better than Wikipedia does, so if you want to learn more, you should check out their [article about color blindness](#).

## Dichromacy



**Original Color**  
BC8A87

**Protanopia**  
9B968D

**Deuteranopia**  
AB9186



**Tritanopia**  
BD8893

# Trichromacy



# Monochromacy



# CSS Examples

## Text

The CSS property to change the color of the text to Hex BC8A87 is called "color". The color property can be set on classes, ids or directly on the HTML element.

This example shows how text in the color #BC8A87 looks like.

```
.text, #text, p{  
    color:#BC8A87  
}
```

If you want to add a text shadow in that color use the text-shadow property, you can generate a text shadow directly with our [CSS Text Shadow Generator](#).

Here you see how black text with a 4 pixel #BC8A87 colored shadow looks like.

```
.shadow{ text-shadow: 4px 4px 2px #BC8A87
}
```

## Border

The CSS property to change the border of an element to Hex BC8A87 is called "border". The border property can be set on classes, ids or directly on the HTML element.

This example shows the color as border, it can be applied via the CSS property "border" or "border-color".

```
.border, #border, table{ border:4px solid
#BC8A87 }
```

If only the border color should be changed use the property `border-color`.

```
.border{ border-color:#BC8A87 }
```

If you want to add a box shadow in that color use:

Here you see how a box with a 4 pixel #BC8A87 colored shadow looks like.

```
.boxshadow{ -moz-box-shadow:4px 4px 4px  
4px #BC8A87; -webkit-box-shadow:4px 4px  
4px 4px #BC8A87; box-shadow:4px 4px 4px  
4px #BC8A87 }
```

# Background

The CSS property to change the background color of an element to Hex BC8A87 is called "background". The background property can be set on classes, ids or directly on the HTML element.

```
.background, #background, body{  
background:#BC8A87 }
```

If only the background color should be changed can be used:

```
.background{ background-color:#BC8A87 }
```

This example shows the color as background, it is applied via the CSS property "background".

To optimize and compress your CSS code, you can use our [online CSS compressor and optimizer](#) based on csstidy. If you want to create a linear or radial gradient as background or border, check our [CSS Gradient Generator](#).



Hey! You found this booklet interesting? Support Converting Colors with the new Membership Option!

The pro membership hides all ads, plus gives you double the colors in the color bucket, and more awesome pro features!

**[Learn more, Memberships starting at \\$2.50/m!](#)**

**Follow me  
on Twitter!**

@ConvertingColor