

Converting Colors

Hex(BC8B90)

Have a look what the booklet for
Hex(BC8B90) contains.

Hex(BC8B90)	3
<i>Conversions</i>	4
<i>Details</i>	6
<i>Harmonies</i>	11
<i>Previews</i>	23
<i>Color Blindness Simulation</i>	26
<i>CSS Examples</i>	29

Color

Hex(BC8B90)

Conversions

Conversions Part 1

Format	Color
Hex	BC8B90
RGB	188, 139, 144
RGB Percent	74%, 55%, 56%
CMY	0.2627, 0.4549, 0.4353
CMYK	0.00, 0.26, 0.23, 0.26
HSL	354°, 27%, 64%
HSV	354°, 26%, 74%
XYZ	35.0057, 31.1702, 30.5570
YIQ	154.2210, 27.5990, 11.9430

Conversions

Conversions Part 2

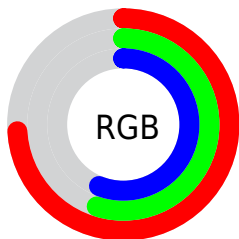
Format	Color
R _Y B	188, 139, 144
Decimal	12356496
CIE Lab	62.65, 19.39, 4.66
CIE LCh	63, 19.941, 13.523
Yxy	31.1702, 0.3619, 0.3222
Android (android.graphics.Color)	4290546576 (0xFFBC8B90)
YUV	154.2210, -5.0390, 29.6242
Hunter-Lab	55.8303, 14.2168, 6.6306

Details

The Hex color **BC8B90** is a light color, and the websafe version is hex **CC9999**. A complement of this color would be **8BBCB7**, and the grayscale version is **9A9A9A**.

A 20% lighter version of the original color is **F5C1C6**, and **86595E** is the 20% darker color. If you saturate the color by 10%, you get **BC787F**, and if you desaturate by 10%, it is **BC9EA1**.

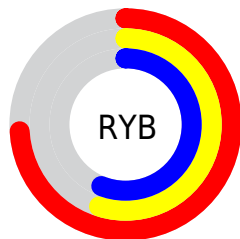
Distribution



Red (74%)

Green (55%)

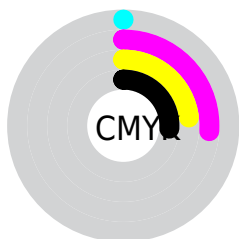
Blue (56%)



Red (74%)

Yellow (55%)

Blue (56%)

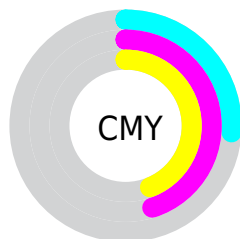


Cyan (0%)

Magenta (26%)

Yellow (23%)

Black (26%)



Cyan (26%)

Magenta (45%)

Yellow (44%)

Brightness & Saturation Gradients

These gradients show how the Hex color BC8B90 changes by changing the brightness by 10 percent. The first figure shows a shift by +10% for each color and the second figure -10%.

Similar to the brightness gradients but the following saturation gradients show a change of the Hex color BC8B90 by changing the saturation by 10% instead.

 BC8B90

 BC8B90

FFFFFF

 A17176

 F5C1C6

 86595E

 FFDDE2

 6C4146

 FFF9FE

 532A30

 3A151B

 270000

 000000

 BC8B90

 BC8B90

 BC787F

 BC9EA1

 BC656E

 BCB1B2

 BC535D

 BCC3C3

 BC404C

 BCD6D4

 BC2D3C

 BCE9E4

 BC1A2B

 BCFCF5

 BC071A

 BCFFFF

 BC0013

Harmonies

Analogous

The Analogous color harmony consists of three colors that are next to each other on the color wheel.



B58CA2



BC8B90



B98E80

Triad

The Triadic color harmony groups three colors that are evenly spaced from another and form a triangle on the color wheel.



BC8B90



899E7D



769CB9

Complementary

The Complementary color scheme is a pair of colors which are on the opposite of each other on the color wheel.



BC8B90



8BBCB7

Split Complementary

Split-complementary colors differ from the complementary color scheme. The scheme consists of three colors, the original color and two neighbors of the complement color.



68A0AF



BC8B90



75A18D

Square

The Square scheme is like the rectangle color scheme, but the four colors are evenly spaced on the color wheel.



BC8B90



9D9975



68A29F



8D96BA

Rectangle

The Rectangle color scheme consists of four colors that form a rectangle on the color wheel.



BC8B90



B29178



68A29F



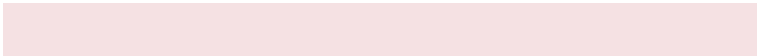
709EB7

Sweetspot

The Sweet Spot groups the original color and five complimentary colors.



BC8B90



F5E1E3



B68BBC



7A6E6F



FAFAFA



7A7A7A

Same Dimension

The Same Dimension uses a secret algorithm to generate beautiful new colors.



BC8B90



F5A9B1



BC9E8B



5E5556



9E0010



1F0003

Inverse Universe

The Inverse Universe completely reimagines the original color for something new.



BC8B90



F5A9B1



8BA9BC



5E5556



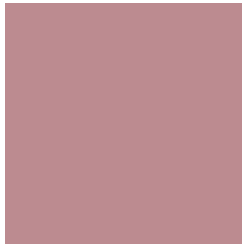
9E0010



1F0003

Previews

White Background



This preview shows how the Hex color BC8B90 looks on a white background.

Color Contrast Check

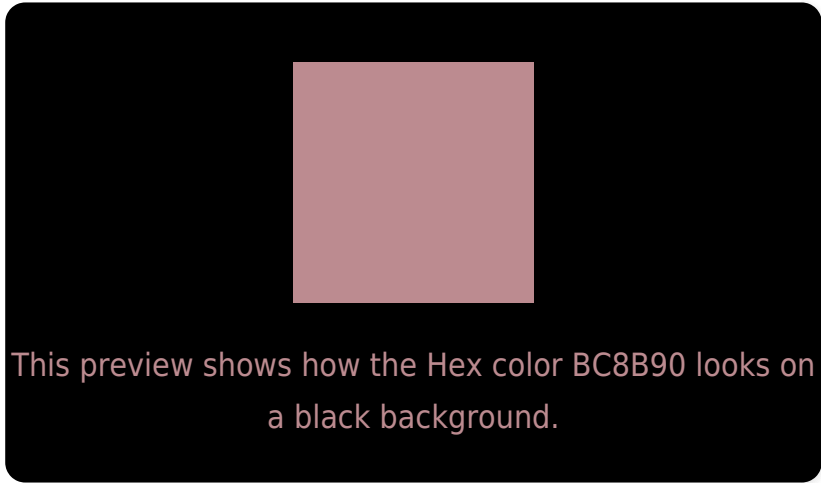
Large Text (above 18pt) WCAG AA × Fail

Any Text WCAG AA × Fail

Large Text (above 18pt) WCAG AAA × Fail

Any Text WCAG AAA × Fail

Black Background



Color Contrast Check

Large Text (above 18pt) WCAG AA ✓ Pass

Any Text WCAG AA ✓ Pass

Large Text (above 18pt) WCAG AAA ✓ Pass

Any Text WCAG AAA ✓ Pass

If you want to check with other color combinations, try the [Color Contrast Checker](#).

Hex BC8B90 Background



This preview shows how black text looks on a background with the Hex color BC8B90.



This preview shows how white text looks on a background with the Hex color BC8B90.

Color Blindness Simulation

Color vision deficiency is a very complex topic, and I could not describe the different causes any better than Wikipedia does, so if you want to learn more, you should check out their [article about color blindness](#).


Dichromacy



Original Color
BC8B90

Protanopia
9B9797

Deuteranopia
AA938F



Tritanopia
BD8A95

Trichromacy



Original Color
BC8B90

Protanomaly
A79394

Deuteranomaly
B1908F

Tritanomaly
BD8A93

Monochromacy



Original Color
BC8B90

Achromatopsia
9A9A9A

Achromatomaly
A69596

CSS Examples

Text

The CSS property to change the color of the text to Hex BC8B90 is called "color". The color property can be set on classes, ids or directly on the HTML element.

This example shows how text in the color #BC8B90 looks like.

```
.text, #text, p{  
    color:#BC8B90  
}
```

If you want to add a text shadow in that color use the text-shadow property, you can generate a text shadow directly with our [CSS Text Shadow Generator](#).

Here you see how black text with a 4 pixel #BC8B90 colored shadow looks like.

```
.shadow{ text-shadow: 4px 4px 2px #BC8B90
}
```

Border

The CSS property to change the border of an element to Hex BC8B90 is called "border". The border property can be set on classes, ids or directly on the HTML element.

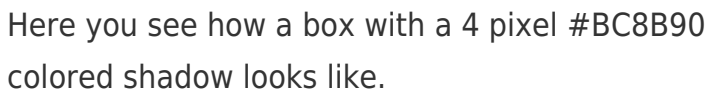
This example shows the color as border, it can be applied via the CSS property "border" or "border-color".

```
.border, #border, table{ border:4px solid
#BC8B90 }
```

If only the border color should be changed use the property `border-color`.

```
.border{ border-color:#BC8B90 }
```

If you want to add a box shadow in that color use:



Here you see how a box with a 4 pixel `#BC8B90` colored shadow looks like.

```
.boxshadow{ -moz-box-shadow:4px 4px 4px  
4px #BC8B90; -webkit-box-shadow:4px 4px  
4px 4px #BC8B90; box-shadow:4px 4px 4px  
4px #BC8B90 }
```

Background

The CSS property to change the background color of an element to Hex BC8B90 is called "background". The background property can be set on classes, ids or directly on the HTML element.

```
.background, #background, body{  
background:#BC8B90 }
```

If only the background color should be changed can be used:

```
.background{ background-color:#BC8B90 }
```

This example shows the color as background, it is applied via the CSS property "background".

To optimize and compress your CSS code, you can use our [online CSS compressor and optimizer](#) based on csstidy. If you want to create a linear or radial gradient as background or border, check our [CSS Gradient Generator](#).

Hey! You found this booklet interesting? Support Converting Colors with the new Membership Option!

The pro membership hides all ads, plus gives you double the colors in the color bucket, and more awesome pro features!

[Learn more, Memberships starting at \\$2.50/m!](#)

**Follow me
on Twitter!**

@ConvertingColor