

Converting Colors

Hex(BC8E56)

Have a look what the booklet for
Hex(BC8E56) contains.

Hex(BC8E56)	3
<i>Conversions</i>	4
<i>Details</i>	6
<i>Harmonies</i>	11
<i>Previews</i>	23
<i>Color Blindness Simulation</i>	26
<i>CSS Examples</i>	29

Color

Hex(BC8E56)

Conversions

Conversions Part 1

Format	Color
Hex	BC8E56
RGB	188, 142, 86
RGB Percent	74%, 56%, 34%
CMY	0.2627, 0.4431, 0.6627
CMYK	0.00, 0.24, 0.54, 0.26
HSL	33°, 43%, 54%
HSV	33°, 54%, 74%
XYZ	32.0918, 30.7093, 13.0402
YIQ	149.3700, 45.3920, -7.6640

Conversions

Conversions Part 2

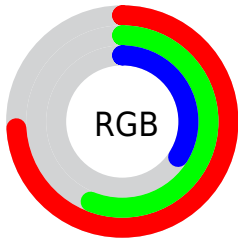
Format	Color
RYB	170, 188, 86
Decimal	12357206
CIELab	62.26, 10.83, 36.35
CIElCh	62, 37.930, 73.404
Yxy	30.7093, 0.4231, 0.4049
Android (android.graphics.Color)	4290547286 (0xFFBC8E56)
YUV	149.3700, -31.2414, 33.8785
Hunter-Lab	55.4159, 6.3927, 24.8394

Details

The Hex color **BC8E56** is a dark color, and the websafe version is hex **CC9966**. A complement of this color would be **5684BC**, and the grayscale version is **969696**.

A 20% lighter version of the original color is **F6C489**, and **845C26** is the 20% darker color. If you saturate the color by 10%, you get **BC8643**, and if you desaturate by 10%, it is **BC9669**.

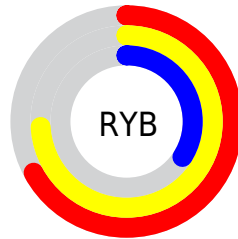
Distribution



Red (74%)

Green (56%)

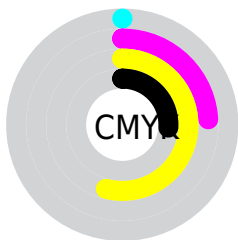
Blue (34%)



Red (67%)

Yellow (74%)

Blue (34%)

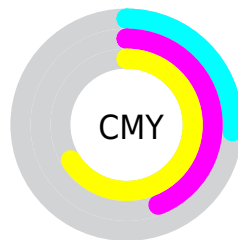


Cyan (0%)

Magenta (24%)

Yellow (54%)

Black (26%)



Cyan (26%)

Magenta (44%)

Yellow (66%)

Brightness & Saturation Gradients

These gradients show how the Hex color BC8E56 changes by changing the brightness by 10 percent. The first figure shows a shift by +10% for each color and the second figure -10%.

Similar to the brightness gradients but the following saturation gradients show a change of the Hex color BC8E56 by changing the saturation by 10% instead.

 BC8E56

 BC8E56

FFFFFF

 A0743E

 F6C489

 845C26

 FFE0A4

 69440E

 FFFCBF

 4F2E00

 FFFFDB

 351900

 FFFFF8

 1D0000

 000000

 BC8E56

 BC8E56

 BC8643

 BC9669

 BC7D30

 BC9F7C

 BC751E

 BCA78E

 BC6C0B

 BCB0A1

 BC6700

 BCB8B4

 BCC1C7

 BCC9DA

 BCD2EC

 BCDAFF

Harmonies

Analogous

The Analogous color harmony consists of three colors that are next to each other on the color wheel.



D1836A



BC8E56



9D9954

Triad

The Triadic color harmony groups three colors that are evenly spaced from another and form a triangle on the color wheel.



BC8E56



00A8A5



AD88C8

Complementary

The Complementary color scheme is a pair of colors which are on the opposite of each other on the color wheel.



BC8E56



5684BC

Split Complementary

Split-complementary colors differ from the complementary color scheme. The scheme consists of three colors, the original color and two neighbors of the complement color.



7D95D8



BC8E56



00A6C4

Square

The Square scheme is like the rectangle color scheme, but the four colors are evenly spaced on the color wheel.



BC8E56



4BA782



3C9FD6



CC7EAB

Rectangle

The Rectangle color scheme consists of four colors that form a rectangle on the color wheel.



BC8E56



859F5D



3C9FD6



9F8CCF

Sweetspot

The Sweet Spot groups the original color and five complimentary colors.



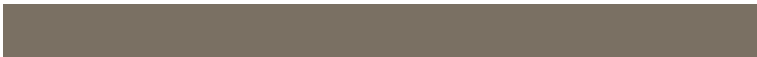
BC8E56



F5E3CE



BC5686



7A7063



FAFAFA



7A7A7A

Same Dimension

The Same Dimension uses a secret algorithm to generate beautiful new colors.



BC8E56



F5AD56



B9BC56



5E5A55



9E5700



1F1100

Inverse Universe

The Inverse Universe completely reimagines the original color for something new.



5684BC



569DF5



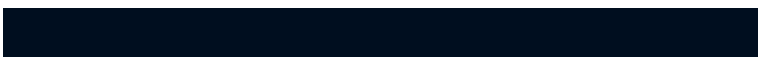
5956BC



55595E



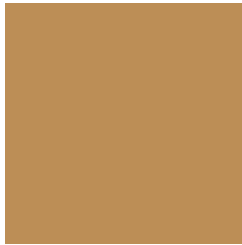
00479E



000E1F

Previews

White Background



This preview shows how the Hex color BC8E56 looks on a white background.

Color Contrast Check

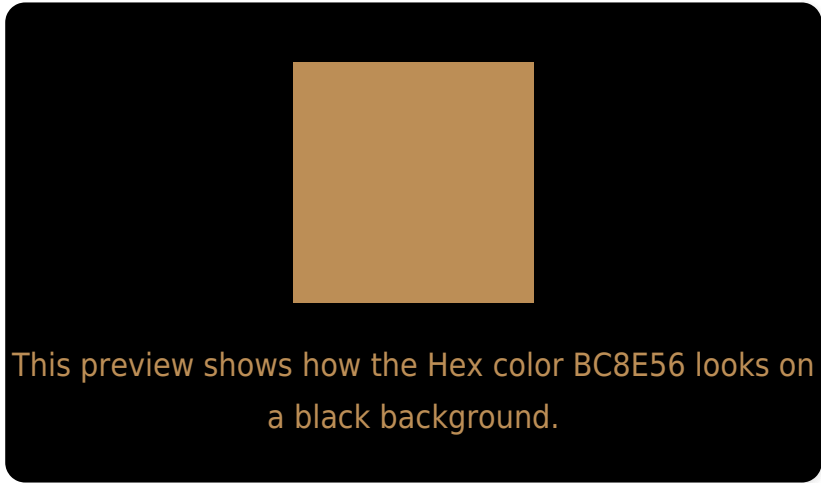
Large Text (above 18pt) WCAG AA × Fail

Any Text WCAG AA × Fail

Large Text (above 18pt) WCAG AAA × Fail

Any Text WCAG AAA × Fail

Black Background



Color Contrast Check

Large Text (above 18pt) WCAG AA ✓ Pass

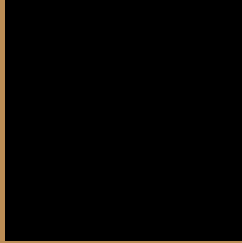
Any Text WCAG AA ✓ Pass

Large Text (above 18pt) WCAG AAA ✓ Pass

Any Text WCAG AAA ✓ Pass

If you want to check with other color combinations, try the [Color Contrast Checker](#).

Hex BC8E56 Background



This preview shows how black text looks on a background with the Hex color BC8E56.



This preview shows how white text looks on a background with the Hex color BC8E56.

Color Blindness Simulation

Color vision deficiency is a very complex topic, and I could not describe the different causes any better than Wikipedia does, so if you want to learn more, you should check out their [article about color blindness](#).

Dichromacy





Tritanopia
C18791

Trichromacy



Original Color
BC8E56

Protanomaly
AD9458

Deuteranomaly
B98F56

Tritanomaly
BF8A7C

Monochromacy



Original Color
BC8E56

Achromatopsia
959595

Achromatomaly
A3927E

CSS Examples

Text

The CSS property to change the color of the text to Hex BC8E56 is called "color". The color property can be set on classes, ids or directly on the HTML element.

This example shows how text in the color #BC8E56 looks like.

```
.text, #text, p{  
    color:#BC8E56  
}
```

If you want to add a text shadow in that color use the text-shadow property, you can generate a text shadow directly with our [CSS Text Shadow Generator](#).

Here you see how black text with a 4 pixel #BC8E56 colored shadow looks like.

```
.shadow{ text-shadow: 4px 4px 2px #BC8E56
}
```

Border

The CSS property to change the border of an element to Hex BC8E56 is called "border". The border property can be set on classes, ids or directly on the HTML element.

This example shows the color as border, it can be applied via the CSS property "border" or "border-color".

```
.border, #border, table{ border:4px solid
#BC8E56 }
```

If only the border color should be changed use the property `border-color`.

```
.border{ border-color:#BC8E56 }
```

If you want to add a box shadow in that color use:

Here you see how a box with a 4 pixel #BC8E56 colored shadow looks like.

```
.boxshadow{ -moz-box-shadow:4px 4px 4px  
4px #BC8E56; -webkit-box-shadow:4px 4px  
4px 4px #BC8E56; box-shadow:4px 4px 4px  
4px #BC8E56 }
```

Background

The CSS property to change the background color of an element to Hex BC8E56 is called "background". The background property can be set on classes, ids or directly on the HTML element.

```
.background, #background, body{  
background:#BC8E56 }
```

If only the background color should be changed can be used:

```
.background{ background-color:#BC8E56 }
```

This example shows the color as background, it is applied via the CSS property "background".

To optimize and compress your CSS code, you can use our [online CSS compressor and optimizer](#) based on csstidy. If you want to create a linear or radial gradient as background or border, check our [CSS Gradient Generator](#).

Hey! You found this booklet interesting? Support Converting Colors with the new Membership Option!

The pro membership hides all ads, plus gives you double the colors in the color bucket, and more awesome pro features!

[Learn more, Memberships starting at \\$2.50/m!](#)

**Follow me
on Twitter!**

@ConvertingColor