

# Converting Colors

Hex(BC9195)

Have a look what the booklet for  
Hex(BC9195) contains.

<b>Hex(BC9195)</b> .....	3
<i><b>Conversions</b></i> .....	4
<i><b>Details</b></i> .....	6
<i><b>Harmonies</b></i> .....	11
<i><b>Previews</b></i> .....	23
<i><b>Color Blindness Simulation</b></i> .....	26
<i><b>CSS Examples</b></i> .....	29

# **Color**

**Hex(BC9195)**

# Conversions

## Conversions Part 1

Format	Color
Hex	BC9195
RGB	188, 145, 149
RGB Percent	74%, 57%, 58%
CMY	0.2627, 0.4314, 0.4157
CMYK	0.00, 0.23, 0.21, 0.26
HSL	354°, 24%, 65%
HSV	354°, 23%, 74%
XYZ	36.2893, 33.1121, 32.9124
YIQ	158.3130, 24.3440, 10.3600

# Conversions

## Conversions Part 2

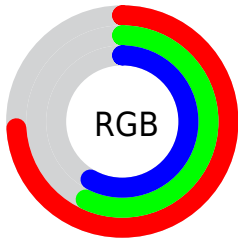
Format	Color
R <sub>Y</sub> B	188, 145, 149
Decimal	12358037
CIE Lab	64.25, 16.82, 4.14
CIE LCh	64, 17.320, 13.832
Yxy	33.1121, 0.3547, 0.3236
Android (android.graphics.Color)	4290548117 (0xFFBC9195)
YUV	158.3130, -4.5913, 26.0355
Hunter-Lab	57.5431, 11.8696, 6.3686

# Details

The Hex color **BC9195** is a light color, and the websafe version is hex **CC9999**. A complement of this color would be **91BCB8**, and the grayscale version is **9E9E9E**.

A 20% lighter version of the original color is **F5C7CB**, and **865E62** is the 20% darker color. If you saturate the color by 10%, you get **BC7E84**, and if you desaturate by 10%, it is **BCA4A6**.

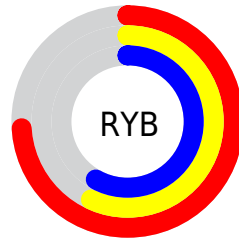
# Distribution



Red (74%)

Green (57%)

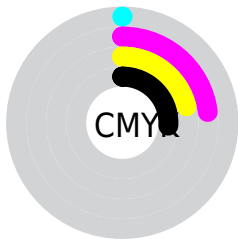
Blue (58%)



Red (74%)

Yellow (57%)

Blue (58%)

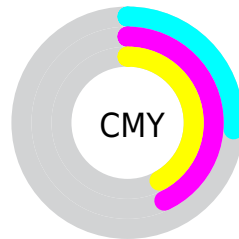


Cyan (0%)

Magenta (23%)

Yellow (21%)

Black (26%)



Cyan (26%)

Magenta (43%)

Yellow (42%)

# Brightness & Saturation Gradients

These gradients show how the Hex color BC9195 changes by changing the brightness by 10 percent. The first figure shows a shift by +10% for each color and the second figure -10%.

Similar to the brightness gradients but the following saturation gradients show a change of the Hex color BC9195 by changing the saturation by 10% instead.



 BC9195

 BC9195

FFFFFF

 A1777B

 F5C7CB

 865E62

 FFE3E7

 6C464B

 533034

 3B1A1F

 260206

 000000

 BC9195

 BC9195

 BC7E84

 BCA4A6

 BC6B73

 BCB7B7

 BC5962

 BCC9C8

 BC4651

 BCD9D9

 BC3340

 BCEFEA

 BC202F

 BCFFFB

 BC0D1E

 BCFFFF

 BC0011

# Harmonies

## Analogous

The Analogous color harmony consists of three colors that are next to each other on the color wheel.



B692A5



BC9195



BA9387

# Triad

The Triadic color harmony groups three colors that are evenly spaced from another and form a triangle on the color wheel.



BC9195



8FA185



80A0B9

# Complementary

The Complementary color scheme is a pair of colors which are on the opposite of each other on the color wheel.



BC9195



91BCB8

# Split Complementary

Split-complementary colors differ from the complementary color scheme. The scheme consists of three colors, the original color and two neighbors of the complement color.



74A3B1



BC9195



7EA493

# Square

The Square scheme is like the rectangle color scheme, but the four colors are evenly spaced on the color wheel.



BC9195



A09D7E



73A5A3



949BBA

# Rectangle

The Rectangle color scheme consists of four colors that form a rectangle on the color wheel.



BC9195



B49681



73A5A3



7BA1B7

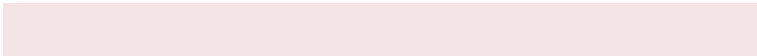


# Sweetspot

The Sweet Spot groups the original color and five complimentary colors.



BC9195



F5E4E5



B891BC



7A7172



FAFAFA



7A7A7A



# Same Dimension

The Same Dimension uses a secret algorithm to generate beautiful new colors.



BC9195



F5B3B9



BCA291



5E5556



9E000F



1F0003



# Inverse Universe

The Inverse Universe completely reimagines the original color for something new.



BC9195



F5B3B9



91ABBC



5E5556



9E000F

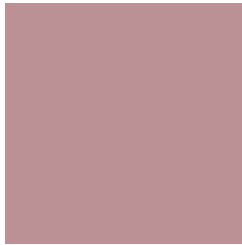


1F0003



# Previews

## White Background



This preview shows how the Hex color BC9195 looks on a white background.

## Color Contrast Check

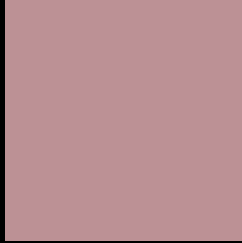
Large Text (above 18pt) WCAG AA × Fail

Any Text WCAG AA × Fail

Large Text (above 18pt) WCAG AAA × Fail

Any Text WCAG AAA × Fail

# Black Background



This preview shows how the Hex color BC9195 looks on a black background.

## Color Contrast Check

Large Text (above 18pt) WCAG AA ✓ Pass

Any Text WCAG AA ✓ Pass

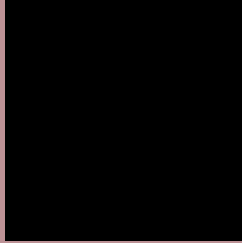
Large Text (above 18pt) WCAG AAA ✓ Pass

Any Text WCAG AAA ✓ Pass

If you want to check with other color combinations, try the [Color Contrast Checker](#).



## Hex BC9195 Background



This preview shows how black text looks on a background with the Hex color BC9195.

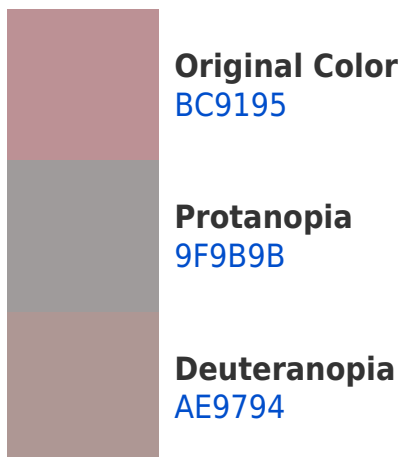


This preview shows how white text looks on a background with the Hex color BC9195.

# Color Blindness Simulation

Color vision deficiency is a very complex topic, and I could not describe the different causes any better than Wikipedia does, so if you want to learn more, you should check out their [article about color blindness](#).

## Dichromacy





**Tritanopia**  
BD909B

# Trichromacy



**Original Color**  
BC9195

**Protanomaly**  
AA9799

**Deuteranomaly**  
B39594

**Tritanomaly**  
BD9099

# Monochromacy



**Original Color**  
BC9195

**Achromatopsia**  
9E9E9E

**Achromatomaly**  
A9999B

# CSS Examples

## Text

The CSS property to change the color of the text to Hex BC9195 is called "color". The color property can be set on classes, ids or directly on the HTML element.

This example shows how text in the color #BC9195 looks like.

```
.text, #text, p{  
    color:#BC9195  
}
```

If you want to add a text shadow in that color use the text-shadow property, you can generate a text shadow directly with our [CSS Text Shadow Generator](#).

Here you see how black text with a 4 pixel #BC9195 colored shadow looks like.

```
.shadow{ text-shadow: 4px 4px 2px #BC9195
}
```

## Border

The CSS property to change the border of an element to Hex BC9195 is called "border". The border property can be set on classes, ids or directly on the HTML element.

This example shows the color as border, it can be applied via the CSS property "border" or "border-color".

```
.border, #border, table{ border:4px solid
#BC9195 }
```

If only the border color should be changed use the property `border-color`.

```
.border{ border-color:#BC9195 }
```

If you want to add a box shadow in that color use:

Here you see how a box with a 4 pixel #BC9195 colored shadow looks like.

```
.boxshadow{ -moz-box-shadow:4px 4px 4px  
4px #BC9195; -webkit-box-shadow:4px 4px  
4px 4px #BC9195; box-shadow:4px 4px 4px  
4px #BC9195 }
```

# Background

The CSS property to change the background color of an element to Hex BC9195 is called "background". The background property can be set on classes, ids or directly on the HTML element.

```
.background, #background, body{  
background:#BC9195 }
```

If only the background color should be changed can be used:

```
.background{ background-color:#BC9195 }
```

This example shows the color as background, it is applied via the CSS property "background".

To optimize and compress your CSS code, you can use our [online CSS compressor and optimizer](#) based on csstidy. If you want to create a linear or radial gradient as background or border, check our [CSS Gradient Generator](#).



Hey! You found this booklet interesting? Support Converting Colors with the new Membership Option!

The pro membership hides all ads, plus gives you double the colors in the color bucket, and more awesome pro features!

**[Learn more, Memberships starting at \\$2.50/m!](#)**

**Follow me  
on Twitter!**

@ConvertingColor