

Converting Colors

Hex(BC9366)

Have a look what the booklet for
Hex(BC9366) contains.

Hex(BC9366)	3
<i>Conversions</i>	4
<i>Details</i>	6
<i>Harmonies</i>	11
<i>Previews</i>	23
<i>Color Blindness Simulation</i>	26
<i>CSS Examples</i>	29

Color

Hex(BC9366)

Conversions

Conversions Part 1

Format	Color
Hex	BC9366
RGB	188, 147, 102
RGB Percent	74%, 58%, 40%
CMY	0.2627, 0.4235, 0.6000
CMYK	0.00, 0.22, 0.46, 0.26
HSL	31°, 39%, 57%
HSV	31°, 46%, 74%
XYZ	33.5710, 32.5181, 17.0776
YIQ	154.1290, 38.8810, -5.3030

Conversions

Conversions Part 2

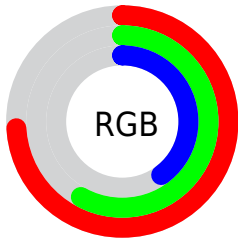
Format	Color
RYB	180, 188, 102
Decimal	12358502
CIELab	63.77, 9.61, 29.67
CIELCh	64, 31.190, 72.063
Yxy	32.5181, 0.4037, 0.3910
Android (android.graphics.Color)	4290548582 (0xFFBC9366)
YUV	154.1290, -25.6996, 29.7049
Hunter-Lab	57.0247, 5.2917, 22.1612

Details

The Hex color **BC9366** is a dark color, and the websafe version is hex **CC9966**. A complement of this color would be **668FBC**, and the grayscale version is **9A9A9A**.

A 20% lighter version of the original color is **F6C99A**, and **856036** is the 20% darker color. If you saturate the color by 10%, you get **BC8A53**, and if you desaturate by 10%, it is **BC9C79**.

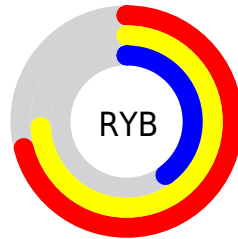
Distribution



Red (74%)

Green (58%)

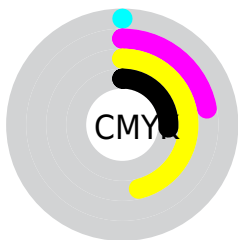
Blue (40%)



Red (71%)

Yellow (74%)

Blue (40%)

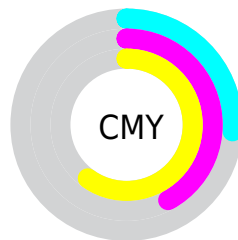


Cyan (0%)

Magenta (22%)

Yellow (46%)

Black (26%)



Cyan (26%)

Magenta (42%)

Yellow (60%)

Brightness & Saturation Gradients

These gradients show how the Hex color BC9366 changes by changing the brightness by 10 percent. The first figure shows a shift by +10% for each color and the second figure -10%.

Similar to the brightness gradients but the following saturation gradients show a change of the Hex color BC9366 by changing the saturation by 10% instead.

 BC9366

 BC9366

FFFFFF

 A0794E

 F6C99A

 856036

 FFE5B5

 6A4920

 FFFFD0

 503209

 FFFFED

 371D00

 1F0600

 000000

 BC9366

 BC9366

 BC8A53

 BC9C79

 BC8140

 BCA58C

 BC782E

 BC AE9E

 BC6F1B

 BC B7B1

 BC6608

 BCC0C4

 BC6200

 BCC9D7

 BCD2EA

 BCDBFC

 BCE4FF

Harmonies

Analogous

The Analogous color harmony consists of three colors that are next to each other on the color wheel.



CD8A77



BC9366



A29C64

Triad

The Triadic color harmony groups three colors that are evenly spaced from another and form a triangle on the color wheel.



BC9366



42AAA5



AC8FC4

Complementary

The Complementary color scheme is a pair of colors which are on the opposite of each other on the color wheel.



BC9366



668FBC

Split Complementary

Split-complementary colors differ from the complementary color scheme. The scheme consists of three colors, the original color and two neighbors of the complement color.



8699D1



BC9366



3AA8BF

Square

The Square scheme is like the rectangle color scheme, but the four colors are evenly spaced on the color wheel.



BC9366



62A888



5AA2CF



C687AC

Rectangle

The Rectangle color scheme consists of four colors that form a rectangle on the color wheel.



BC9366



8EA26B



5AA2CF



A193CA

Sweetspot

The Sweet Spot groups the original color and five complimentary colors.



BC9366



F5E4D3



BC6690



7A7066



FAFAFA



7A7A7A

Same Dimension

The Same Dimension uses a secret algorithm to generate beautiful new colors.



BC9366



F5B56E



BBBC66



5E5A55



9E5300



1F1000

Inverse Universe

The Inverse Universe completely reimagines the original color for something new.



668FBC



6EAEF5



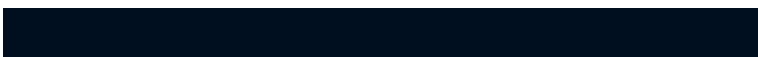
6766BC



55595E



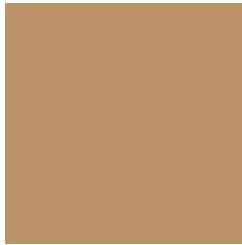
004B9E



000F1F

Previews

White Background



This preview shows how the Hex color BC9366 looks on a white background.

Color Contrast Check

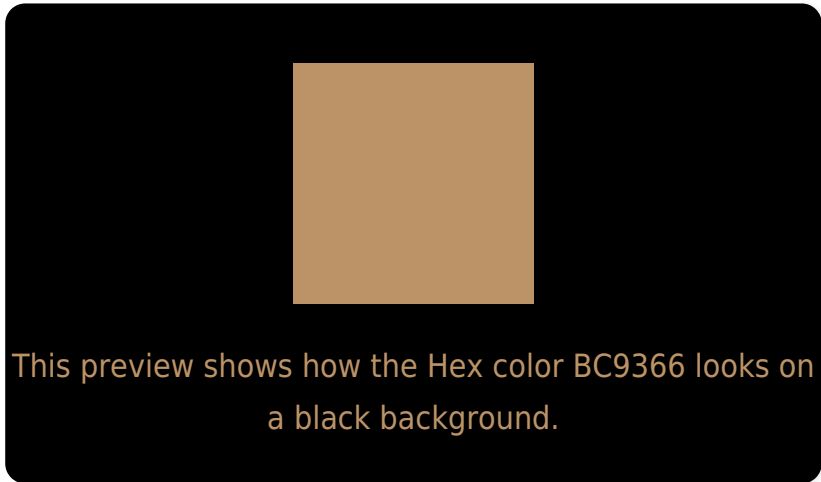
Large Text (above 18pt) WCAG AA × Fail

Any Text WCAG AA × Fail

Large Text (above 18pt) WCAG AAA × Fail

Any Text WCAG AAA × Fail

Black Background



Color Contrast Check

Large Text (above 18pt) WCAG AA ✓ Pass

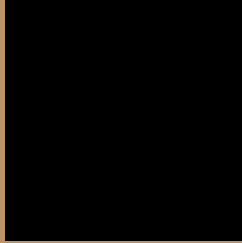
Any Text WCAG AA ✓ Pass

Large Text (above 18pt) WCAG AAA ✓ Pass

Any Text WCAG AAA ✓ Pass

If you want to check with other color combinations, try the [Color Contrast Checker](#).

Hex BC9366 Background



This preview shows how black text looks on a background with the Hex color BC9366.




This preview shows how white text looks on a background with the Hex color BC9366.

Color Blindness Simulation

Color vision deficiency is a very complex topic, and I could not describe the different causes any better than Wikipedia does, so if you want to learn more, you should check out their [article about color blindness](#).

Dichromacy



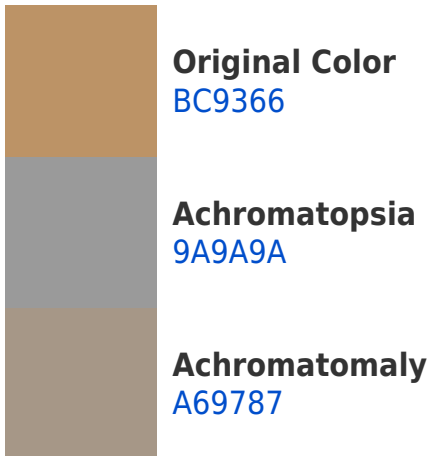


Tritanopia
C18D97

Trichromacy



Monochromacy



CSS Examples

Text

The CSS property to change the color of the text to Hex BC9366 is called "color". The color property can be set on classes, ids or directly on the HTML element.

This example shows how text in the color #BC9366 looks like.

```
.text, #text, p{  
    color:#BC9366  
}
```

If you want to add a text shadow in that color use the text-shadow property, you can generate a text shadow directly with our [CSS Text Shadow Generator](#).

Here you see how black text with a 4 pixel #BC9366 colored shadow looks like.

```
.shadow{ text-shadow: 4px 4px 2px #BC9366
}
```

Border

The CSS property to change the border of an element to Hex BC9366 is called "border". The border property can be set on classes, ids or directly on the HTML element.

This example shows the color as border, it can be applied via the CSS property "border" or "border-color".

```
.border, #border, table{ border:4px solid
#BC9366 }
```

If only the border color should be changed use the property `border-color`.

```
.border{ border-color:#BC9366 }
```

If you want to add a box shadow in that color use:

Here you see how a box with a 4 pixel #BC9366 colored shadow looks like.

```
.boxshadow{ -moz-box-shadow:4px 4px 4px  
4px #BC9366; -webkit-box-shadow:4px 4px  
4px 4px #BC9366; box-shadow:4px 4px 4px  
4px #BC9366 }
```

Background

The CSS property to change the background color of an element to Hex BC9366 is called "background". The background property can be set on classes, ids or directly on the HTML element.

```
.background, #background, body{  
background:#BC9366 }
```

If only the background color should be changed can be used:

```
.background{ background-color:#BC9366 }
```

This example shows the color as background, it is applied via the CSS property "background".

To optimize and compress your CSS code, you can use our [online CSS compressor and optimizer](#) based on csstidy. If you want to create a linear or radial gradient as background or border, check our [CSS Gradient Generator](#).

Hey! You found this booklet interesting? Support Converting Colors with the new Membership Option!

The pro membership hides all ads, plus gives you double the colors in the color bucket, and more awesome pro features!

[Learn more, Memberships starting at \\$2.50/m!](#)

**Follow me
on Twitter!**

@ConvertingColor