

Converting Colors

Hex(BC979E)

Have a look what the booklet for
Hex(BC979E) contains.

Hex(BC979E)	3
<i>Conversions</i>	4
<i>Details</i>	6
<i>Harmonies</i>	11
<i>Previews</i>	23
<i>Color Blindness Simulation</i>	26
<i>CSS Examples</i>	29

Color

Hex(BC979E)

Conversions

Conversions Part 1

Format	Color
Hex	BC979E
RGB	188, 151, 158
RGB Percent	74%, 59%, 62%
CMY	0.2627, 0.4078, 0.3804
CMYK	0.00, 0.20, 0.16, 0.26
HSL	349°, 22%, 66%
HSV	349°, 20%, 74%
XYZ	37.9772, 35.2932, 37.1584
YIQ	162.8610, 19.8050, 10.0210

Conversions

Conversions Part 2

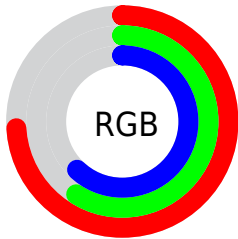
Format	Color
RYB	188, 151, 158
Decimal	12359582
CIELab	65.98, 14.92, 1.57
CIELCh	66, 15.005, 6.023
Yxy	35.2932, 0.3439, 0.3196
Android (android.graphics.Color)	4290549662 (0xFFBC979E)
YUV	162.8610, -2.3965, 22.0469
Hunter-Lab	59.4081, 10.1437, 4.5011

Details

The Hex color **BC979E** is a light color, and the websafe version is hex **CC9999**. A complement of this color would be **97BCB5**, and the grayscale version is **A3A3A3**.

A 20% lighter version of the original color is **F5CDD5**, and **86646B** is the 20% darker color. If you saturate the color by 10%, you get **BC848F**, and if you desaturate by 10%, it is **BCAAAD**.

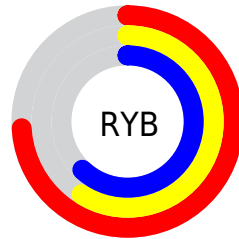
Distribution



Red (74%)

Green (59%)

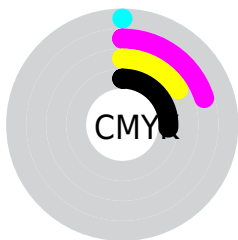
Blue (62%)



Red (74%)

Yellow (59%)

Blue (62%)

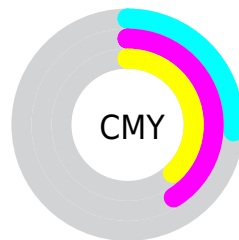


Cyan (0%)

Magenta (20%)

Yellow (16%)

Black (26%)



Cyan (26%)

Magenta (41%)

Yellow (38%)

Brightness & Saturation Gradients

These gradients show how the Hex color BC979E changes by changing the brightness by 10 percent. The first figure shows a shift by +10% for each color and the second figure -10%.

Similar to the brightness gradients but the following saturation gradients show a change of the Hex color BC979E by changing the saturation by 10% instead.

 BC979E

 BC979E

FFFFFF

 A17D84

 F5CDD5

 86646B

 FFEAF1

 6D4C53

 54353C

 3C1F26

 260A11

 000000

 BC979E

 BC979E

 BC848F

 BCAAAD

 BC7180

 BCBDBC

 BC5F70

 BCCFCC

 BC4C61

 BCE2DB

 BC3952

 BCF5EA

 BC2643

 BCFFF9

 BC1333

 BCFFFF

 BC0124

 BC0024

Harmonies

Analogous

The Analogous color harmony consists of three colors that are next to each other on the color wheel.



B498AC



BC979E



BC9891

Triad

The Triadic color harmony groups three colors that are evenly spaced from another and form a triangle on the color wheel.



BC979E



99A48A



85A5B8

Complementary

The Complementary color scheme is a pair of colors which are on the opposite of each other on the color wheel.



BC979E



97BCB5

Split Complementary

Split-complementary colors differ from the complementary color scheme. The scheme consists of three colors, the original color and two neighbors of the complement color.



7DA7B0



BC979E



8AA795

Square

The Square scheme is like the rectangle color scheme, but the four colors are evenly spaced on the color wheel.



BC979E



A8A086



80A8A3



95A1BB

Rectangle

The Rectangle color scheme consists of four colors that form a rectangle on the color wheel.



BC979E



B89A8A



80A8A3



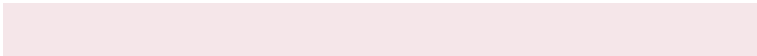
82A6B6

Sweetspot

The Sweet Spot groups the original color and five complimentary colors.



BC979E



F5E6E9



B597BC



7A7273



FAFAFA



7A7A7A

Same Dimension

The Same Dimension uses a secret algorithm to generate beautiful new colors.



BC979E



F5BAC5



BCA297



5E5557



9E001E



1F0006

Inverse Universe

The Inverse Universe completely reimagines the original color for something new.



BC979E



F5BAC5



97B1BC



5E5557



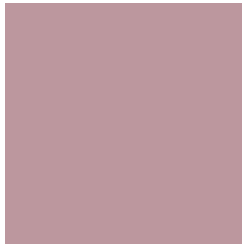
9E001E



1F0006

Previews

White Background



This preview shows how the Hex color BC979E looks on a white background.

Color Contrast Check

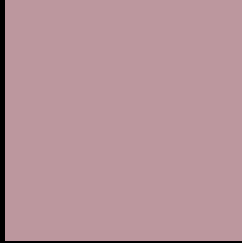
Large Text (above 18pt) WCAG AA × Fail

Any Text WCAG AA × Fail

Large Text (above 18pt) WCAG AAA × Fail

Any Text WCAG AAA × Fail

Black Background



This preview shows how the Hex color BC979E looks on a black background.

Color Contrast Check

Large Text (above 18pt) WCAG AA ✓ Pass

Any Text WCAG AA ✓ Pass

Large Text (above 18pt) WCAG AAA ✓ Pass

Any Text WCAG AAA ✓ Pass

If you want to check with other color combinations, try the [Color Contrast Checker](#).

Hex BC979E Background



This preview shows how black text looks on a background with the Hex color BC979E.



This preview shows how white text looks on a background with the Hex color BC979E.

Color Blindness Simulation

Color vision deficiency is a very complex topic, and I could not describe the different causes any better than Wikipedia does, so if you want to learn more, you should check out their [article about color blindness](#).


Dichromacy



Original Color
BC979E

Protanopia
A3A0A3

Deuteranopia
B19B9D



Tritanopia
BC96A2

Trichromacy



Original Color
BC979E

Protanomaly
AC9DA1

Deuteranomaly
B59A9D

Tritanomaly
BC96A1

Monochromacy



Original Color
BC979E

Achromatopsia
A3A3A3

Achromatomaly
AC9FA1

CSS Examples

Text

The CSS property to change the color of the text to Hex BC979E is called "color". The color property can be set on classes, ids or directly on the HTML element.

This example shows how text in the color #BC979E looks like.

```
.text, #text, p{  
    color:#BC979E  
}
```

If you want to add a text shadow in that color use the text-shadow property, you can generate a text shadow directly with our [CSS Text Shadow Generator](#).

Here you see how black text with a 4 pixel #BC979E colored shadow looks like.

```
.shadow{ text-shadow: 4px 4px 2px #BC979E
}
```

Border

The CSS property to change the border of an element to Hex BC979E is called "border". The border property can be set on classes, ids or directly on the HTML element.

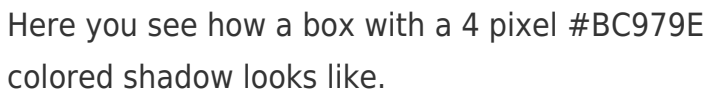
This example shows the color as border, it can be applied via the CSS property "border" or "border-color".

```
.border, #border, table{ border:4px solid
#BC979E }
```

If only the border color should be changed use the property `border-color`.

```
.border{ border-color:#BC979E }
```

If you want to add a box shadow in that color use:



Here you see how a box with a 4 pixel #BC979E colored shadow looks like.

```
.boxshadow{ -moz-box-shadow:4px 4px 4px  
4px #BC979E; -webkit-box-shadow:4px 4px  
4px 4px #BC979E; box-shadow:4px 4px 4px  
4px #BC979E }
```

Background

The CSS property to change the background color of an element to Hex BC979E is called "background". The background property can be set on classes, ids or directly on the HTML element.

```
.background, #background, body{  
background:#BC979E }
```

If only the background color should be changed can be used:

```
.background{ background-color:#BC979E }
```

This example shows the color as background, it is applied via the CSS property "background".

To optimize and compress your CSS code, you can use our [online CSS compressor and optimizer](#) based on csstidy. If you want to create a linear or radial gradient as background or border, check our [CSS Gradient Generator](#).

Hey! You found this booklet interesting? Support Converting Colors with the new Membership Option!

The pro membership hides all ads, plus gives you double the colors in the color bucket, and more awesome pro features!

[Learn more, Memberships starting at \\$2.50/m!](#)

**Follow me
on Twitter!**

@ConvertingColor