

Converting Colors

Hex(BC9890)

Have a look what the booklet for
Hex(BC9890) contains.

Hex(BC9890)	3
<i>Conversions</i>	4
<i>Details</i>	6
<i>Harmonies</i>	11
<i>Previews</i>	23
<i>Color Blindness Simulation</i>	26
<i>CSS Examples</i>	29

Color

Hex(BC9890)

Conversions

Conversions Part 1

Format	Color
Hex	BC9890
RGB	188, 152, 144
RGB Percent	74%, 60%, 56%
CMY	0.2627, 0.4039, 0.4353
CMYK	0.00, 0.19, 0.23, 0.26
HSL	11°, 25%, 65%
HSV	11°, 23%, 74%
XYZ	37.0013, 35.1615, 31.2222
YIQ	161.8520, 24.0240, 5.1440

Conversions

Conversions Part 2

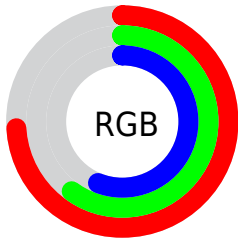
Format	Color
RYB	188, 154, 144
Decimal	12359824
CIELab	65.87, 12.18, 9.28
CIELCh	66, 15.311, 37.292
Yxy	35.1615, 0.3579, 0.3401
Android (android.graphics.Color)	4290549904 (0xFFBC9890)
YUV	161.8520, -8.8010, 22.9318
Hunter-Lab	59.2971, 7.6139, 10.2895

Details

The Hex color **BC9890** is a light color, and the websafe version is hex **CC9999**. A complement of this color would be **90B4BC**, and the grayscale version is **A2A2A2**.

A 20% lighter version of the original color is **F5CEC6**, and **86655E** is the 20% darker color. If you saturate the color by 10%, you get **BC897D**, and if you desaturate by 10%, it is **BCA7A3**.

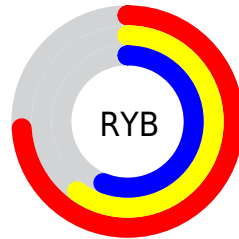
Distribution



Red (74%)

Green (60%)

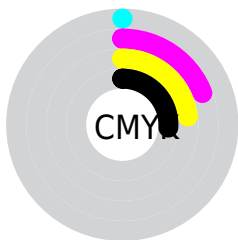
Blue (56%)



Red (74%)

Yellow (60%)

Blue (56%)

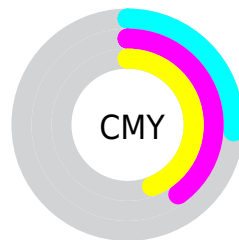


Cyan (0%)

Magenta (19%)

Yellow (23%)

Black (26%)



Cyan (26%)

Magenta (40%)

Yellow (44%)

Brightness & Saturation Gradients

These gradients show how the Hex color BC9890 changes by changing the brightness by 10 percent. The first figure shows a shift by +10% for each color and the second figure -10%.

Similar to the brightness gradients but the following saturation gradients show a change of the Hex color BC9890 by changing the saturation by 10% instead.



BC9890



BC9890

FFFFFF



A17E76



F5CEC6



86655E



FFEBE2



6C4D46

FFFFFFE



533630



3B201B



260B00



000000



BC9890



BC9890



BC897D



BCA7A3

 BC796A

 BCB7B6

 BC6A58

 BCC6C8

 BC5A45

 BCD6DB

 BC4B32

 BCE5EE

 BC3C1F

 BCF4FF

 BC2C0C

 BCFFFF

 BC2200

Harmonies

Analogous

The Analogous color harmony consists of three colors that are next to each other on the color wheel.



BC979D



BC9890



B49C87

Triad

The Triadic color harmony groups three colors that are evenly spaced from another and form a triangle on the color wheel.



BC9890



89A795



95A0BB

Complementary

The Complementary color scheme is a pair of colors which are on the opposite of each other on the color wheel.



BC9890



90B4BC

Split Complementary

Split-complementary colors differ from the complementary color scheme. The scheme consists of three colors, the original color and two neighbors of the complement color.



85A4B9



BC9890



7EA8A3

Square

The Square scheme is like the rectangle color scheme, but the four colors are evenly spaced on the color wheel.



BC9890



98A48A



7CA7B0



A79BB6

Rectangle

The Rectangle color scheme consists of four colors that form a rectangle on the color wheel.



BC9890



AC9F85



7CA7B0



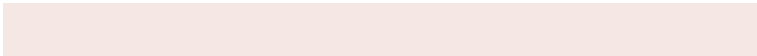
8FA2BB

Sweetspot

The Sweet Spot groups the original color and five complimentary colors.



BC9890



F5E7E4



BC90B5



7A7271



FAFAFA



7A7A7A

Same Dimension

The Same Dimension uses a secret algorithm to generate beautiful new colors.



BC9890



F5BDB0



BCAD90



5E5755



9E1D00



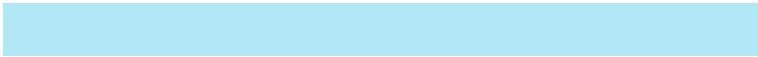
1F0600

Inverse Universe

The Inverse Universe completely reimagines the original color for something new.



90B4BC



B0E8F5



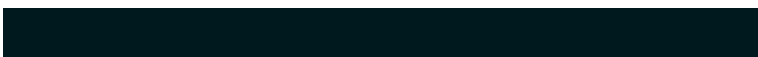
909FBC



555D5E



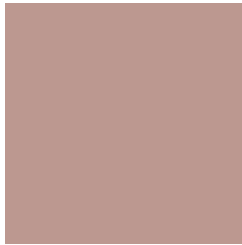
00819E



00191F

Previews

White Background



This preview shows how the Hex color BC9890 looks on a white background.

Color Contrast Check

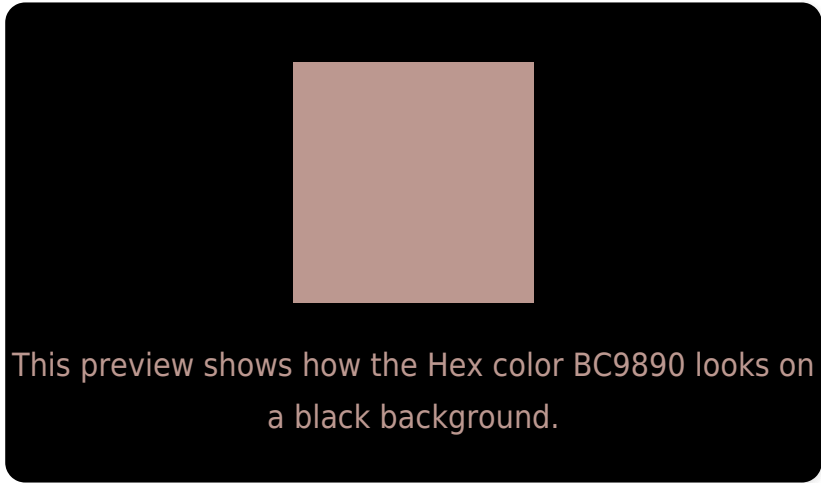
Large Text (above 18pt) WCAG AA × Fail

Any Text WCAG AA × Fail

Large Text (above 18pt) WCAG AAA × Fail

Any Text WCAG AAA × Fail

Black Background



Color Contrast Check

Large Text (above 18pt) WCAG AA ✓ Pass

Any Text WCAG AA ✓ Pass

Large Text (above 18pt) WCAG AAA ✓ Pass

Any Text WCAG AAA ✓ Pass

If you want to check with other color combinations, try the [Color Contrast Checker](#).

Hex BC9890 Background



This preview shows how black text looks on a background with the Hex color BC9890.



This preview shows how white text looks on a background with the Hex color BC9890.

Color Blindness Simulation

Color vision deficiency is a very complex topic, and I could not describe the different causes any better than Wikipedia does, so if you want to learn more, you should check out their [article about color blindness](#).

Dichromacy



Original Color
BC9890

Protanopia
A6A094

Deuteranopia
B69A90



Tritanopia
BE95A1

Trichromacy



Original Color
BC9890

Protanomaly
AE9D93

Deuteranomaly
B89990

Tritanomaly
BD969B

Monochromacy



Original Color
BC9890

Achromatopsia
A2A2A2

Achromatomaly
AB9E9B

CSS Examples

Text

The CSS property to change the color of the text to Hex BC9890 is called "color". The color property can be set on classes, ids or directly on the HTML element.

This example shows how text in the color #BC9890 looks like.

```
.text, #text, p{  
    color:#BC9890  
}
```

If you want to add a text shadow in that color use the text-shadow property, you can generate a text shadow directly with our [CSS Text Shadow Generator](#).

Here you see how black text with a 4 pixel #BC9890 colored shadow looks like.

```
.shadow{ text-shadow: 4px 4px 2px #BC9890
}
```

Border

The CSS property to change the border of an element to Hex BC9890 is called "border". The border property can be set on classes, ids or directly on the HTML element.

This example shows the color as border, it can be applied via the CSS property "border" or "border-color".

```
.border, #border, table{ border:4px solid
#BC9890 }
```

If only the border color should be changed use the property `border-color`.

```
.border{ border-color:#BC9890 }
```

If you want to add a box shadow in that color use:

Here you see how a box with a 4 pixel #BC9890 colored shadow looks like.

```
.boxshadow{ -moz-box-shadow:4px 4px 4px  
4px #BC9890; -webkit-box-shadow:4px 4px  
4px 4px #BC9890; box-shadow:4px 4px 4px  
4px #BC9890 }
```

Background

The CSS property to change the background color of an element to Hex BC9890 is called "background". The background property can be set on classes, ids or directly on the HTML element.

```
.background, #background, body{  
background:#BC9890 }
```

If only the background color should be changed can be used:

```
.background{ background-color:#BC9890 }
```

This example shows the color as background, it is applied via the CSS property "background".

To optimize and compress your CSS code, you can use our [online CSS compressor and optimizer](#) based on csstidy. If you want to create a linear or radial gradient as background or border, check our [CSS Gradient Generator](#).

Hey! You found this booklet interesting? Support Converting Colors with the new Membership Option!

The pro membership hides all ads, plus gives you double the colors in the color bucket, and more awesome pro features!

[Learn more, Memberships starting at \\$2.50/m!](#)

**Follow me
on Twitter!**

@ConvertingColor