

# Converting Colors

Hex(BC989B)

Have a look what the booklet for  
Hex(BC989B) contains.

<b>Hex(BC989B)</b> .....	3
<i><b>Conversions</b></i> .....	4
<i><b>Details</b></i> .....	6
<i><b>Harmonies</b></i> .....	11
<i><b>Previews</b></i> .....	23
<i><b>Color Blindness Simulation</b></i> .....	26
<i><b>CSS Examples</b></i> .....	29

# **Color**

**Hex(BC989B)**

# Conversions

## Conversions Part 1

Format	Color
Hex	BC989B
RGB	188, 152, 155
RGB Percent	74%, 60%, 61%
CMY	0.2627, 0.4039, 0.3922
CMYK	0.00, 0.19, 0.18, 0.26
HSL	355°, 21%, 67%
HSV	355°, 19%, 74%
XYZ	37.8837, 35.5144, 35.8686
YIQ	163.1060, 20.4930, 8.5650

# Conversions

## Conversions Part 2

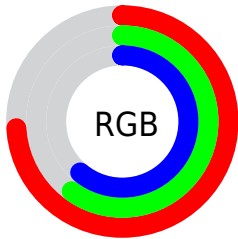
Format	Color
<a href="#">RYB</a>	<a href="#">188, 152, 155</a>
Decimal	<a href="#">12359835</a>
CIELab	<a href="#">66.15, 13.88, 3.51</a>
CIElCh	<a href="#">66, 14.319, 14.170</a>
Yxy	<a href="#">35.5144, 0.3467, 0.3250</a>
Android (android.graphics.Color)	<a href="#">4290549915</a> ( <a href="#">0xFFBC989B</a> )
YUV	<a href="#">163.1060, -3.9963, 21.8320</a>
Hunter-Lab	<a href="#">59.5940, 9.1824, 6.0301</a>

# Details

The Hex color **BC989B** is a light color, and the websafe version is hex **CC9999**. A complement of this color would be **98BCB9**, and the grayscale version is **A3A3A3**.

A 20% lighter version of the original color is **F5CED1**, and **866568** is the 20% darker color. If you saturate the color by 10%, you get **BC858A**, and if you desaturate by 10%, it is **BCABAC**.

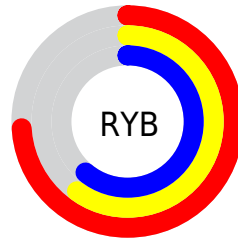
# Distribution



Red (74%)

Green (60%)

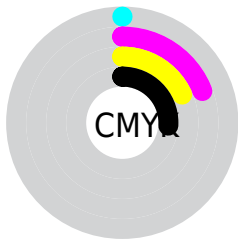
Blue (61%)



Red (74%)

Yellow (60%)

Blue (61%)

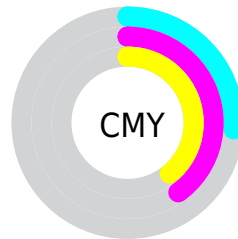


Cyan (0%)

Magenta (19%)

Yellow (18%)

Black (26%)



Cyan (26%)

Magenta (40%)

Yellow (39%)

# Brightness & Saturation Gradients

These gradients show how the Hex color BC989B changes by changing the brightness by 10 percent. The first figure shows a shift by +10% for each color and the second figure -10%.

Similar to the brightness gradients but the following saturation gradients show a change of the Hex color BC989B by changing the saturation by 10% instead.



 BC989B

FFFFFF

 F5CED1

 FFE8E8

 BC989B

 A17E81

 866568

 6D4D50

 543639

 3C2024

 260B0E

 000000

 BC989B

 BC858A

 BC989B

 BCABAC

 BC7279

 BCBEBD

 BC6067

 BCD0CF

 BC4D56

 BCE3E0

 BC3A45

 BCF6F1

 BC2734

 BCFFFF

 BC1422

 BC0211

 BC0010

# Harmonies

## Analogous

The Analogous color harmony consists of three colors that are next to each other on the color wheel.



B799A8



BC989B



BA9A8F

# Triad

The Triadic color harmony groups three colors that are evenly spaced from another and form a triangle on the color wheel.



BC989B



96A68E



8BA4B9

# Complementary

The Complementary color scheme is a pair of colors which are on the opposite of each other on the color wheel.



BC989B



98BCB9

# Split Complementary

Split-complementary colors differ from the complementary color scheme. The scheme consists of three colors, the original color and two neighbors of the complement color.



81A7B2



BC989B



88A899

# Square

The Square scheme is like the rectangle color scheme, but the four colors are evenly spaced on the color wheel.



BC989B



A5A288



80A8A7



9BA0B9

# Rectangle

The Rectangle color scheme consists of four colors that form a rectangle on the color wheel.



BC989B



B59C8A



80A8A7



87A5B7

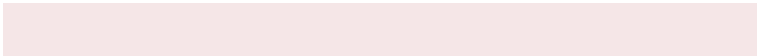


# Sweetspot

The Sweet Spot groups the original color and five complimentary colors.



BC989B



F5E6E7



B998BC



7A7273



FAFAFA



7A7A7A



# Same Dimension

The Same Dimension uses a secret algorithm to generate beautiful new colors.



BC989B



F5BCC1



BCA798



5E5556



9E000D



1F0003



# Inverse Universe

The Inverse Universe completely reimagines the original color for something new.



BC989B



F5BCC1



98ADBC



5E5556



9E000D

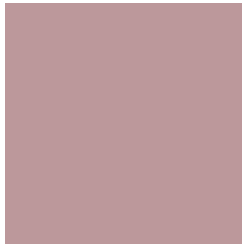


1F0003



# Previews

## White Background



This preview shows how the Hex color BC989B looks on a white background.

## Color Contrast Check

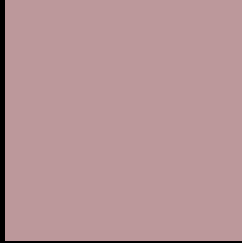
Large Text (above 18pt) WCAG AA × Fail

Any Text WCAG AA × Fail

Large Text (above 18pt) WCAG AAA × Fail

Any Text WCAG AAA × Fail

# Black Background



This preview shows how the Hex color BC989B looks on a black background.

## Color Contrast Check

Large Text (above 18pt) WCAG AA ✓ Pass

Any Text WCAG AA ✓ Pass

Large Text (above 18pt) WCAG AAA ✓ Pass

Any Text WCAG AAA ✓ Pass

If you want to check with other color combinations, try the [Color Contrast Checker](#).



## Hex BC989B Background



This preview shows how black text looks on a background with the Hex color BC989B.

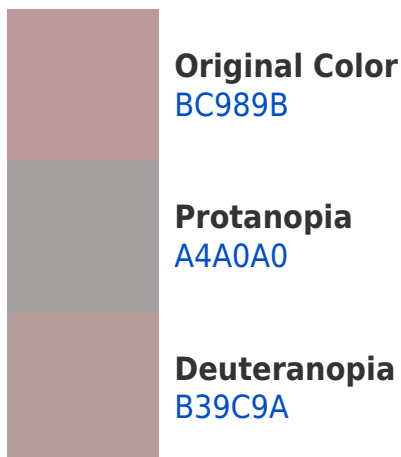



This preview shows how white text looks on a background with the Hex color BC989B.

# Color Blindness Simulation

Color vision deficiency is a very complex topic, and I could not describe the different causes any better than Wikipedia does, so if you want to learn more, you should check out their [article about color blindness](#).

## Dichromacy





**Tritanopia**  
BD97A3

# Trichromacy



**Original Color**  
BC989B

**Protanomaly**  
AD9D9E

**Deuteranomaly**  
B69B9A

**Tritanomaly**  
BD97A0

# Monochromacy



**Original Color**  
BC989B

**Achromatopsia**  
A3A3A3

**Achromatomaly**  
AC9FA0

# CSS Examples

## Text

The CSS property to change the color of the text to Hex BC989B is called "color". The color property can be set on classes, ids or directly on the HTML element.

This example shows how text in the color #BC989B looks like.

```
.text, #text, p{  
    color:#BC989B  
}
```

If you want to add a text shadow in that color use the text-shadow property, you can generate a text shadow directly with our [CSS Text Shadow Generator](#).

Here you see how black text with a 4 pixel #BC989B colored shadow looks like.

```
.shadow{ text-shadow: 4px 4px 2px #BC989B  
}
```

## Border

The CSS property to change the border of an element to Hex BC989B is called "border". The border property can be set on classes, ids or directly on the HTML element.

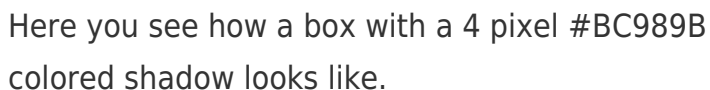
This example shows the color as border, it can be applied via the CSS property "border" or "border-color".

```
.border, #border, table{ border:4px solid  
#BC989B }
```

If only the border color should be changed use the property `border-color`.

```
.border{ border-color:#BC989B }
```

If you want to add a box shadow in that color use:



Here you see how a box with a 4 pixel #BC989B colored shadow looks like.

```
.boxshadow{ -moz-box-shadow:4px 4px 4px  
4px #BC989B; -webkit-box-shadow:4px 4px  
4px 4px #BC989B; box-shadow:4px 4px 4px  
4px #BC989B }
```

# Background

The CSS property to change the background color of an element to Hex BC989B is called "background". The background property can be set on classes, ids or directly on the HTML element.

```
.background, #background, body{  
background:#BC989B }
```

If only the background color should be changed can be used:

```
.background{ background-color:#BC989B }
```

This example shows the color as background, it is applied via the CSS property "background".

To optimize and compress your CSS code, you can use our [online CSS compressor and optimizer](#) based on csstidy. If you want to create a linear or radial gradient as background or border, check our [CSS Gradient Generator](#).



Hey! You found this booklet interesting? Support Converting Colors with the new Membership Option!

The pro membership hides all ads, plus gives you double the colors in the color bucket, and more awesome pro features!

**[Learn more, Memberships starting at \\$2.50/m!](#)**

**Follow me  
on Twitter!**

@ConvertingColor