

Converting Colors

Hex(BC9C95)

Have a look what the booklet for
Hex(BC9C95) contains.

Hex(BC9C95)	3
<i>Conversions</i>	4
<i>Details</i>	6
<i>Harmonies</i>	11
<i>Previews</i>	23
<i>Color Blindness Simulation</i>	26
<i>CSS Examples</i>	29

Color

Hex(BC9C95)

Conversions

Conversions Part 1

Format	Color
Hex	BC9C95
RGB	188, 156, 149
RGB Percent	74%, 61%, 58%
CMY	0.2627, 0.3882, 0.4157
CMYK	0.00, 0.17, 0.21, 0.26
HSL	11°, 23%, 66%
HSV	11°, 21%, 74%
XYZ	38.0523, 36.6382, 33.5001
YIQ	164.7700, 21.3190, 4.6070

Conversions

Conversions Part 2

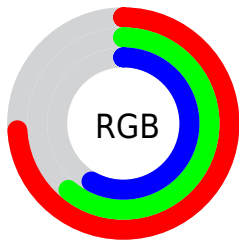
Format	Color
RYB	188, 158, 149
Decimal	12360853
CIELab	67.00, 10.73, 8.09
CIElCh	67, 13.442, 37.021
Yxy	36.6382, 0.3517, 0.3386
Android (android.graphics.Color)	4290550933 (0xFFBC9C95)
YUV	164.7700, -7.7746, 20.3727
Hunter-Lab	60.5295, 6.2887, 9.5566

Details

The Hex color **BC9C95** is a light color, and the websafe version is hex **CC9999**. A complement of this color would be **95B5BC**, and the grayscale version is **A5A5A5**.

A 20% lighter version of the original color is **F5D3CB**, and **866962** is the 20% darker color. If you saturate the color by 10%, you get **BC8D82**, and if you desaturate by 10%, it is **BCABA8**.

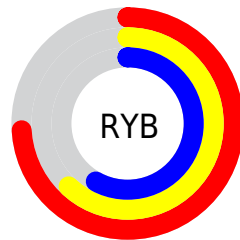
Distribution



Red (74%)

Green (61%)

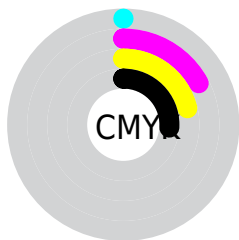
Blue (58%)



Red (74%)

Yellow (62%)

Blue (58%)

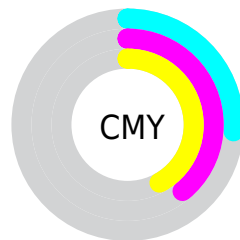


Cyan (0%)

Magenta (17%)

Yellow (21%)

Black (26%)



Cyan (26%)

Magenta (39%)

Yellow (42%)

Brightness & Saturation Gradients

These gradients show how the Hex color BC9C95 changes by changing the brightness by 10 percent. The first figure shows a shift by +10% for each color and the second figure -10%.

Similar to the brightness gradients but the following saturation gradients show a change of the Hex color BC9C95 by changing the saturation by 10% instead.

 BC9C95

 BC9C95

FFFFFF

 A1827B

 F5D3CB

 866962

 FFEFE7

 6C514B

 543A34

 3C241F

 260F06

 000000

 BC9C95

 BC9C95

 BC8D82

 BCABA8

 BC7D6F

 BCBBBB

 BC6E5D

 BCCACD

 BC5E4A

 BCDAE0

 BC4F37

 BCE9F3

 BC3F24

 BCF9FF

 BC3011

 BCFFFF

 BC2200

Harmonies

Analogous

The Analogous color harmony consists of three colors that are next to each other on the color wheel.



BC9BA1



BC9C95



B59F8D

Triad

The Triadic color harmony groups three colors that are evenly spaced from another and form a triangle on the color wheel.



BC9C95



8FA999



9AA3BB

Complementary

The Complementary color scheme is a pair of colors which are on the opposite of each other on the color wheel.



BC9C95



95B5BC

Split Complementary

Split-complementary colors differ from the complementary color scheme. The scheme consists of three colors, the original color and two neighbors of the complement color.



8CA7B9



BC9C95



86AAA6

Square

The Square scheme is like the rectangle color scheme, but the four colors are evenly spaced on the color wheel.



BC9C95



9CA790



84A9B1



A99FB6

Rectangle

The Rectangle color scheme consists of four colors that form a rectangle on the color wheel.



BC9C95



AEA28B



84A9B1



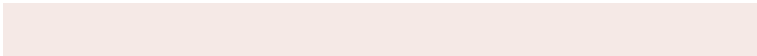
95A4BB

Sweetspot

The Sweet Spot groups the original color and five complimentary colors.



BC9C95



F5E9E6



BC95B6



7A7372



FAFAFA



7A7A7A

Same Dimension

The Same Dimension uses a secret algorithm to generate beautiful new colors.



BC9C95



F5C3B8



BCAF95



5E5755



9E1C00



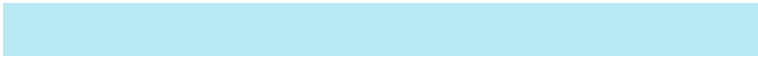
1F0500

Inverse Universe

The Inverse Universe completely reimagines the original color for something new.



95B5BC



B8EAF5



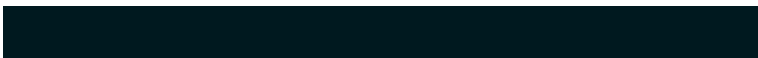
95A2BC



555D5E



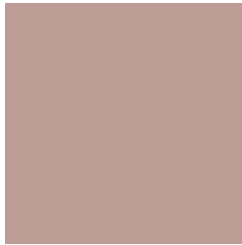
00829E



00191F

Previews

White Background



This preview shows how the Hex color BC9C95 looks on a white background.

Color Contrast Check

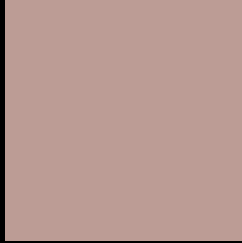
Large Text (above 18pt) WCAG AA × Fail

Any Text WCAG AA × Fail

Large Text (above 18pt) WCAG AAA × Fail

Any Text WCAG AAA × Fail

Black Background



This preview shows how the Hex color BC9C95 looks on a black background.

Color Contrast Check

Large Text (above 18pt) WCAG AA ✓ Pass

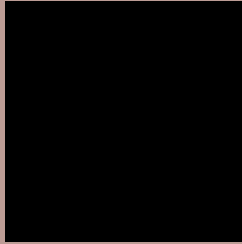
Any Text WCAG AA ✓ Pass

Large Text (above 18pt) WCAG AAA ✓ Pass

Any Text WCAG AAA ✓ Pass

If you want to check with other color combinations, try the [Color Contrast Checker](#).

Hex BC9C95 Background



This preview shows how black text looks on a background with the Hex color BC9C95.



This preview shows how white text looks on a background with the Hex color BC9C95.

Color Blindness Simulation

Color vision deficiency is a very complex topic, and I could not describe the different causes any better than Wikipedia does, so if you want to learn more, you should check out their [article about color blindness](#).

Dichromacy



Original Color
BC9C95

Protanopia
A9A399

Deuteranopia
B89D95



Tritanopia
BE9AA5

Trichromacy



Original Color
BC9C95

Protanomaly
B0A098

Deuteranomaly
B99D95

Tritanomaly
BD9B9F

Monochromacy



Original Color
BC9C95

Achromatopsia
A5A5A5

Achromatomaly
ADA29F

CSS Examples

Text

The CSS property to change the color of the text to Hex BC9C95 is called "color". The color property can be set on classes, ids or directly on the HTML element.

This example shows how text in the color #BC9C95 looks like.

```
.text, #text, p{  
    color:#BC9C95  
}
```

If you want to add a text shadow in that color use the text-shadow property, you can generate a text shadow directly with our [CSS Text Shadow Generator](#).

Here you see how black text with a 4 pixel #BC9C95 colored shadow looks like.

```
.shadow{ text-shadow: 4px 4px 2px #BC9C95
}
```

Border

The CSS property to change the border of an element to Hex BC9C95 is called "border". The border property can be set on classes, ids or directly on the HTML element.

This example shows the color as border, it can be applied via the CSS property "border" or "border-color".

```
.border, #border, table{ border:4px solid
#BC9C95 }
```

If only the border color should be changed use the property `border-color`.

```
.border{ border-color:#BC9C95 }
```

If you want to add a box shadow in that color use:

Here you see how a box with a 4 pixel #BC9C95 colored shadow looks like.

```
.boxshadow{ -moz-box-shadow:4px 4px 4px  
4px #BC9C95; -webkit-box-shadow:4px 4px  
4px 4px #BC9C95; box-shadow:4px 4px 4px  
4px #BC9C95 }
```

Background

The CSS property to change the background color of an element to Hex BC9C95 is called "background". The background property can be set on classes, ids or directly on the HTML element.

```
.background, #background, body{  
background:#BC9C95 }
```

If only the background color should be changed can be used:

```
.background{ background-color:#BC9C95 }
```

This example shows the color as background, it is applied via the CSS property "background".

To optimize and compress your CSS code, you can use our [online CSS compressor and optimizer](#) based on csstidy. If you want to create a linear or radial gradient as background or border, check our [CSS Gradient Generator](#).

Hey! You found this booklet interesting? Support Converting Colors with the new Membership Option!

The pro membership hides all ads, plus gives you double the colors in the color bucket, and more awesome pro features!

[Learn more, Memberships starting at \\$2.50/m!](#)

**Follow me
on Twitter!**

@ConvertingColor