

# Converting Colors

Hex(BC9C97)

Have a look what the booklet for  
Hex(BC9C97) contains.

|  |    |
|--|----|
| <b>Hex(BC9C97)</b> .....                       | 3  |
| <b><i>Conversions</i></b> .....                | 4  |
| <b><i>Details</i></b> .....                    | 6  |
| <b><i>Harmonies</i></b> .....                  | 11 |
| <b><i>Previews</i></b> .....                   | 23 |
| <b><i>Color Blindness Simulation</i></b> ..... | 26 |
| <b><i>CSS Examples</i></b> .....               | 29 |

# **Color**

**Hex(BC9C97)**

# Conversions

## Conversions Part 1

| Format      | Color                     |
|-------------|---------------------------|
| Hex         | BC9C97                    |
| RGB         | 188, 156, 151             |
| RGB Percent | 74%, 61%, 59%             |
| CMY         | 0.2627, 0.3882, 0.4078    |
| CMYK        | 0.00, 0.17, 0.20, 0.26    |
| HSL         | 8°, 22%, 66%              |
| HSV         | 8°, 20%, 74%              |
| XYZ         | 38.2134, 36.7027, 34.3484 |
| YIQ         | 164.9980, 20.6770, 5.2290 |

# Conversions

## Conversions Part 2

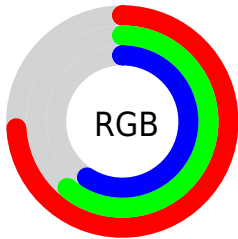
| <b>Format</b>                       | <b>Color</b>                                   |
|-------------------------------------|--|
| <a href="#">RYB</a>                 | <a href="#">188, 157, 151</a>                  |
| Decimal                             | <a href="#">12360855</a>                       |
| CIELab                              | <a href="#">67.05, 11.04, 7.05</a>             |
| CIELCh                              | <a href="#">67, 13.099, 32.546</a>             |
| Yxy                                 | <a href="#">36.7027, 0.3497,<br/>0.3359</a>    |
| Android<br>(android.graphics.Color) | <a href="#">4290550935<br/>(0xFFBC9C97)</a>    |
| YUV                                 | <a href="#">164.9980, -6.9010,<br/>20.1728</a> |
| Hunter-Lab                          | <a href="#">60.5827, 6.5717,<br/>8.7924</a>    |

# Details

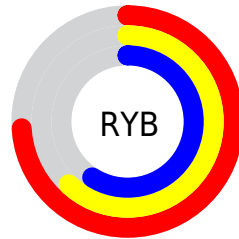
The Hex color **BC9C97** is a light color, and the websafe version is hex **CC9999**. A complement of this color would be **97B7BC**, and the grayscale version is **A5A5A5**.

A 20% lighter version of the original color is **F5D3CD**, and **866964** is the 20% darker color. If you saturate the color by 10%, you get **BC8C84**, and if you desaturate by 10%, it is **BCACAA**.

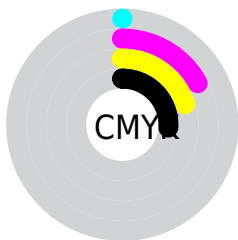
# Distribution



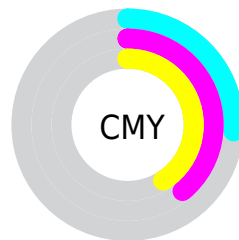
- Red (74%)
- Green (61%)
- Blue (59%)



- Red (74%)
- Yellow (62%)
- Blue (59%)



- Cyan (0%)
- Magenta (17%)
- Yellow (20%)
- Black (26%)



- Cyan (26%)
- Magenta (39%)
- Yellow (41%)

# Brightness & Saturation Gradients

These gradients show how the Hex color BC9C97 changes by changing the brightness by 10 percent. The first figure shows a shift by +10% for each color and the second figure -10%.

Similar to the brightness gradients but the following saturation gradients show a change of the Hex color BC9C97 by changing the saturation by 10% instead.



 BC9C97

 BC9C97

FFFFFF

 A1827D

 F5D3CD

 866964

 FFEFE9

 6D514C

 543A36

 3C2420

 260F09

 000000

 BC9C97

 BC9C97

 BC8C84

 BCACAA

 BC7B71

 BCDBBD

 BC6B5F

 BCCDCF

 BC5B4C

 BCDDE2

 BC4B39

 BCEDF5

 BC3A26

 BCFEFF

 BC2A13

 BCFFFF

 BC1A01

 BC1900

# Harmonies

## Analogous

The Analogous color harmony consists of three colors that are next to each other on the color wheel.



BB9BA3



BC9C97



B69F8F

# Triad

The Triadic color harmony groups three colors that are evenly spaced from another and form a triangle on the color wheel.



BC9C97



91A998



98A4BA

# Complementary

The Complementary color scheme is a pair of colors which are on the opposite of each other on the color wheel.



BC9C97



97B7BC

# Split Complementary

Split-complementary colors differ from the complementary color scheme. The scheme consists of three colors, the original color and two neighbors of the complement color.



8BA7B8



BC9C97



88AAA4

# Square

The Square scheme is like the rectangle color scheme, but the four colors are evenly spaced on the color wheel.



BC9C97



9EA68F



85AAAF



A7A0B7

# Rectangle

The Rectangle color scheme consists of four colors that form a rectangle on the color wheel.



BC9C97



B0A18C



85AAAF



93A5BA



# Sweetspot

The Sweet Spot groups the original color and five complimentary colors.



BC9C97



F5E8E6



BC97B7



7A7372



FAFAFA



7A7A7A



# Same Dimension

The Same Dimension uses a secret algorithm to generate beautiful new colors.



BC9C97



F5C2BA



BCAE97



5E5655



9E1500



1F0400



# Inverse Universe

The Inverse Universe completely reimagines the original color for something new.



97B7BC



BAEDF5



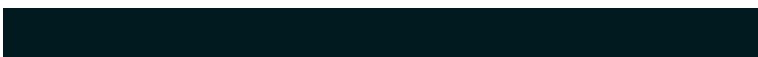
97A5BC



555D5E



00899E

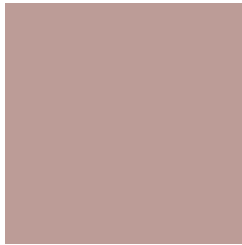


001A1F



# Previews

## White Background



This preview shows how the Hex color BC9C97 looks on a white background.

## Color Contrast Check

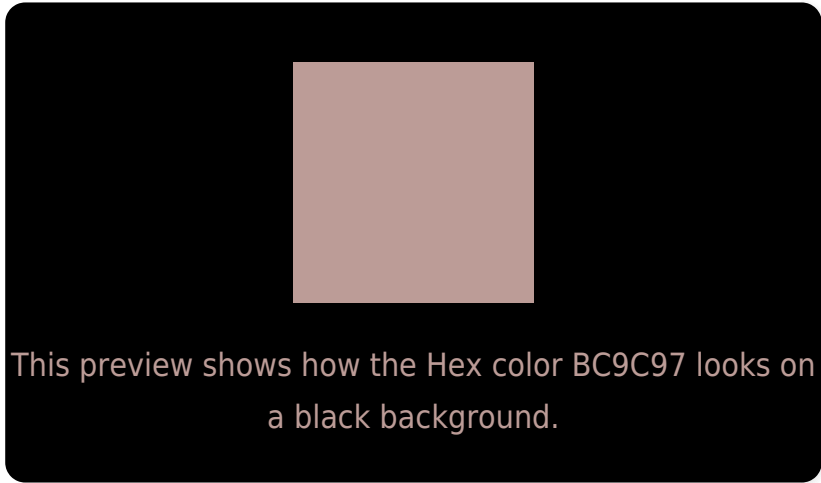
Large Text (above 18pt) WCAG AA × Fail

Any Text WCAG AA × Fail

Large Text (above 18pt) WCAG AAA × Fail

Any Text WCAG AAA × Fail

# Black Background



## Color Contrast Check

Large Text (above 18pt) WCAG AA ✓ Pass

Any Text WCAG AA ✓ Pass

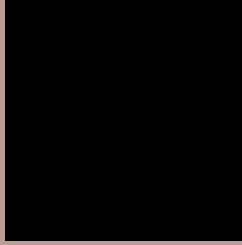
Large Text (above 18pt) WCAG AAA ✓ Pass

Any Text WCAG AAA ✓ Pass

If you want to check with other color combinations, try the [Color Contrast Checker](#).



## Hex BC9C97 Background



This preview shows how black text looks on a background with the Hex color BC9C97.



This preview shows how white text looks on a background with the Hex color BC9C97.

# Color Blindness Simulation

Color vision deficiency is a very complex topic, and I could not describe the different causes any better than Wikipedia does, so if you want to learn more, you should check out their [article about color blindness](#).

## Dichromacy



**Original Color**  
BC9C97

**Protanopia**  
A8A39B

**Deuteranopia**  
B89E97



**Tritanopia**  
BE9AA6

# Trichromacy



**Original Color**  
BC9C97

**Protanomaly**  
AFA09A

**Deuteranomaly**  
B99D97

**Tritanomaly**  
BD9BA1

# Monochromacy



**Original Color**  
BC9C97

**Achromatopsia**  
A5A5A5

**Achromatomaly**  
ADA2A0

# CSS Examples

## Text

The CSS property to change the color of the text to Hex BC9C97 is called "color". The color property can be set on classes, ids or directly on the HTML element.

This example shows how text in the color #BC9C97 looks like.

```
.text, #text, p{  
    color:#BC9C97  
}
```

If you want to add a text shadow in that color use the text-shadow property, you can generate a text shadow directly with our [CSS Text Shadow Generator](#).

Here you see how black text with a 4 pixel #BC9C97 colored shadow looks like.

```
.shadow{ text-shadow: 4px 4px 2px #BC9C97
}
```

## Border

The CSS property to change the border of an element to Hex BC9C97 is called "border". The border property can be set on classes, ids or directly on the HTML element.

This example shows the color as border, it can be applied via the CSS property "border" or "border-color".

```
.border, #border, table{ border:4px solid
#BC9C97 }
```

If only the border color should be changed use the property `border-color`.

```
.border{ border-color:#BC9C97 }
```

If you want to add a box shadow in that color use:

Here you see how a box with a 4 pixel #BC9C97 colored shadow looks like.

```
.boxshadow{ -moz-box-shadow:4px 4px 4px  
4px #BC9C97; -webkit-box-shadow:4px 4px  
4px 4px #BC9C97; box-shadow:4px 4px 4px  
4px #BC9C97 }
```

# Background

The CSS property to change the background color of an element to Hex BC9C97 is called "background". The background property can be set on classes, ids or directly on the HTML element.

```
.background, #background, body{  
background:#BC9C97 }
```

If only the background color should be changed can be used:

```
.background{ background-color:#BC9C97 }
```

This example shows the color as background, it is applied via the CSS property "background".

To optimize and compress your CSS code, you can use our [online CSS compressor and optimizer](#) based on csstidy. If you want to create a linear or radial gradient as background or border, check our [CSS Gradient Generator](#).



Hey! You found this booklet interesting? Support Converting Colors with the new Membership Option!

The pro membership hides all ads, plus gives you double the colors in the color bucket, and more awesome pro features!

**[Learn more, Memberships starting at \\$2.50/m!](#)**

**Follow me  
on Twitter!**

@ConvertingColor