

# Converting Colors

Hex(BCA19C)

Have a look what the booklet for  
Hex(BCA19C) contains.

<b>Hex(BCA19C)</b> .....	3
<i><b>Conversions</b></i> .....	4
<i><b>Details</b></i> .....	6
<i><b>Harmonies</b></i> .....	11
<i><b>Previews</b></i> .....	23
<i><b>Color Blindness Simulation</b></i> .....	26
<i><b>CSS Examples</b></i> .....	29

# **Color**

**Hex(BCA19C)**

# Conversions

## Conversions Part 1

Format	Color
Hex	BCA19C
RGB	188, 161, 156
RGB Percent	74%, 63%, 61%
CMY	0.2627, 0.3686, 0.3882
CMYK	0.00, 0.14, 0.17, 0.26
HSL	9°, 19%, 67%
HSV	9°, 17%, 74%
XYZ	39.4847, 38.5814, 36.8184
YIQ	168.5030, 17.6970, 4.1690

# Conversions

## Conversions Part 2

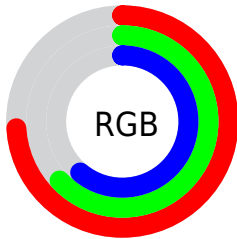
Format	Color
<a href="#">RYB</a>	<a href="#">188, 162, 156</a>
Decimal	<a href="#">12362140</a>
CIELab	<a href="#">68.45, 9.08, 6.26</a>
CIELCh	<a href="#">68, 11.032, 34.583</a>
Yxy	<a href="#">38.5814, 0.3437, 0.3358</a>
Android (android.graphics.Color)	<a href="#">4290552220 (0xFFBCA19C)</a>
YUV	<a href="#">168.5030, -6.1640, 17.0989</a>
Hunter-Lab	<a href="#">62.1139, 4.7697, 8.3353</a>

# Details

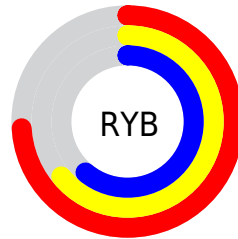
The Hex color **BCA19C** is a light color, and the websafe version is hex **CC9999**. A complement of this color would be **9CB7BC**, and the grayscale version is **A9A9A9**.

A 20% lighter version of the original color is **F4D8D2**, and **866D69** is the 20% darker color. If you saturate the color by 10%, you get **BC9189**, and if you desaturate by 10%, it is **BCB1AF**.

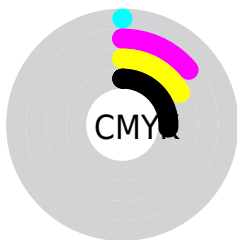
# Distribution



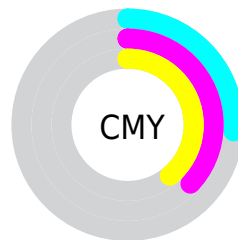
- Red (74%)
- Green (63%)
- Blue (61%)



- Red (74%)
- Yellow (64%)
- Blue (61%)



- Cyan (0%)
- Magenta (14%)
- Yellow (17%)
- Black (26%)



- Cyan (26%)
- Magenta (37%)
- Yellow (39%)

# Brightness & Saturation Gradients

These gradients show how the Hex color BCA19C changes by changing the brightness by 10 percent. The first figure shows a shift by +10% for each color and the second figure -10%.

Similar to the brightness gradients but the following saturation gradients show a change of the Hex color BCA19C by changing the saturation by 10% instead.



 BCA19C

 BCA19C

FFFFFF

 A18782

 F4D8D2

 866D69

 FFF4EF

 6D5551

 543E3A

 3D2824

 26140F

 060000

 000000

 BCA19C

 BCA19C

 BC9189

 BCB1AF

 BC8176

 BCC1C2

 BC7164

 BCD1D4

 BC6251

 BCE0E7

 BC523E

 BCF0FA

 BC422B

 BCFFFF

 BC3218

 BC2206

 BC1D00

# Harmonies

## Analogous

The Analogous color harmony consists of three colors that are next to each other on the color wheel.



BCA0A6



BCA19C



B7A395

# Triad

The Triadic color harmony groups three colors that are evenly spaced from another and form a triangle on the color wheel.



BCA19C



97AC9E



9EA7BB

# Complementary

The Complementary color scheme is a pair of colors which are on the opposite of each other on the color wheel.



BCA19C



9CB7BC

# Split Complementary

Split-complementary colors differ from the complementary color scheme. The scheme consists of three colors, the original color and two neighbors of the complement color.



94AAB9



BCA19C



90ADA8

# Square

The Square scheme is like the rectangle color scheme, but the four colors are evenly spaced on the color wheel.



BCA19C



A2AA96



8EACB2



ABA4B7

# Rectangle

The Rectangle color scheme consists of four colors that form a rectangle on the color wheel.



BCA19C



B1A693



8EACB2



9AA8BA

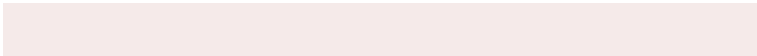


# Sweetspot

The Sweet Spot groups the original color and five complimentary colors.



BCA19C



F5EAE9



BC9CB7



7A7473



FAFAFA



7A7A7A



# Same Dimension

The Same Dimension uses a secret algorithm to generate beautiful new colors.



BCA19C



F5CBC4



BCB19C



5E5655



9E1900



1F0500

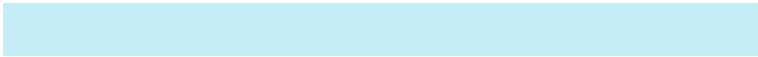


# Inverse Universe

The Inverse Universe completely reimagines the original color for something new.



9CB7BC



C4EDF5



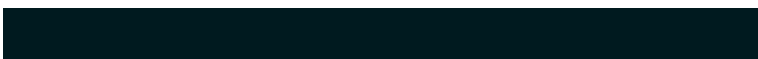
9CA7BC



555D5E



00859E

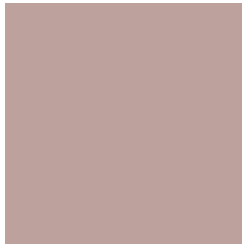


001A1F



# Previews

## White Background



This preview shows how the Hex color BCA19C looks on a white background.

## Color Contrast Check

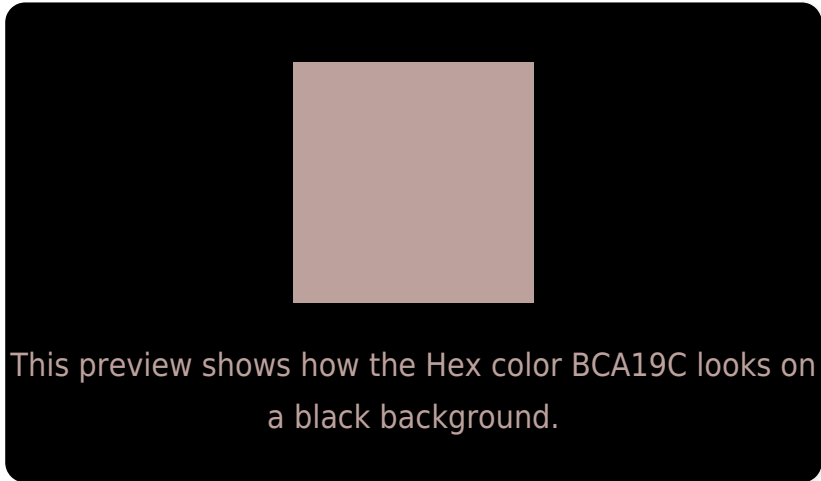
Large Text (above 18pt) WCAG AA × Fail

Any Text WCAG AA × Fail

Large Text (above 18pt) WCAG AAA × Fail

Any Text WCAG AAA × Fail

# Black Background



## Color Contrast Check

Large Text (above 18pt) WCAG AA ✓ Pass

Any Text WCAG AA ✓ Pass

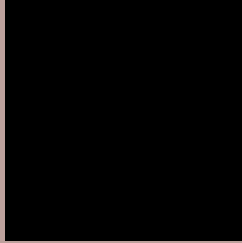
Large Text (above 18pt) WCAG AAA ✓ Pass

Any Text WCAG AAA ✓ Pass

If you want to check with other color combinations, try the [Color Contrast Checker](#).



## Hex BCA19C Background



This preview shows how black text looks on a background with the Hex color BCA19C.



This preview shows how white text looks on a background with the Hex color BCA19C.

# Color Blindness Simulation

Color vision deficiency is a very complex topic, and I could not describe the different causes any better than Wikipedia does, so if you want to learn more, you should check out their [article about color blindness](#).

## Dichromacy



**Original Color**  
BCA19C

**Protanopia**  
ACA69F

**Deuteranopia**  
BBA19C



**Tritanopia**  
BE9FAB

# Trichromacy



**Original Color**

BCA19C

**Protanomaly**

B2A49E

**Deuteranomaly**

BBA19C

**Tritanomaly**

BDA0A6

# Monochromacy



**Original Color**

BCA19C

**Achromatopsia**

A9A9A9

**Achromatomaly**

B0A6A4

# CSS Examples

## Text

The CSS property to change the color of the text to Hex BCA19C is called "color". The color property can be set on classes, ids or directly on the HTML element.

This example shows how text in the color #BCA19C looks like.

```
.text, #text, p{  
    color:#BCA19C  
}
```

If you want to add a text shadow in that color use the text-shadow property, you can generate a text shadow directly with our [CSS Text Shadow Generator](#).

Here you see how black text with a 4 pixel #BCA19C colored shadow looks like.

```
.shadow{ text-shadow: 4px 4px 2px #BCA19C
}
```

## Border

The CSS property to change the border of an element to Hex BCA19C is called "border". The border property can be set on classes, ids or directly on the HTML element.

This example shows the color as border, it can be applied via the CSS property "border" or "border-color".

```
.border, #border, table{ border:4px solid
#BCA19C }
```

If only the border color should be changed use the property `border-color`.

```
.border{ border-color:#BCA19C }
```

If you want to add a box shadow in that color use:

Here you see how a box with a 4 pixel #BCA19C colored shadow looks like.

```
.boxshadow{ -moz-box-shadow:4px 4px 4px  
4px #BCA19C; -webkit-box-shadow:4px 4px  
4px 4px #BCA19C; box-shadow:4px 4px 4px  
4px #BCA19C }
```

# Background

The CSS property to change the background color of an element to Hex BCA19C is called "background". The background property can be set on classes, ids or directly on the HTML element.

```
.background, #background, body{  
background:#BCA19C }
```

If only the background color should be changed can be used:

```
.background{ background-color:#BCA19C }
```

This example shows the color as background, it is applied via the CSS property "background".

To optimize and compress your CSS code, you can use our [online CSS compressor and optimizer](#) based on csstidy. If you want to create a linear or radial gradient as background or border, check our [CSS Gradient Generator](#).



Hey! You found this booklet interesting? Support Converting Colors with the new Membership Option!

The pro membership hides all ads, plus gives you double the colors in the color bucket, and more awesome pro features!

**[Learn more, Memberships starting at \\$2.50/m!](#)**

**Follow me  
on Twitter!**

@ConvertingColor