

Converting Colors

Hex(BCA4AA)

Have a look what the booklet for
Hex(BCA4AA) contains.

Hex(BCA4AA)	3
<i>Conversions</i>	4
<i>Details</i>	6
<i>Harmonies</i>	11
<i>Previews</i>	23
<i>Color Blindness Simulation</i>	26
<i>CSS Examples</i>	29

Color

Hex(BCA4AA)

Conversions

Conversions Part 1

Format	Color
Hex	BCA4AA
RGB	188, 164, 170
RGB Percent	74%, 64%, 67%
CMY	0.2627, 0.3569, 0.3333
CMYK	0.00, 0.13, 0.10, 0.26
HSL	345°, 15%, 69%
HSV	345°, 13%, 74%
XYZ	41.2702, 40.1446, 43.6037
YIQ	171.8600, 12.3780, 6.9540

Conversions

Conversions Part 2

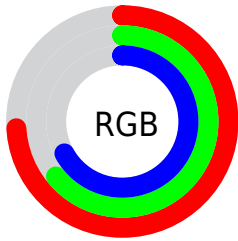
Format	Color
RYB	188, 164, 170
Decimal	12362922
CIELab	69.57, 9.77, 0.12
CIElCh	70, 9.774, 0.706
Yxy	40.1446, 0.3301, 0.3211
Android (android.graphics.Color)	4290553002 (0xFFBCA4AA)
YUV	171.8600, -0.9170, 14.1548
Hunter-Lab	63.3597, 5.3888, 3.5489

Details

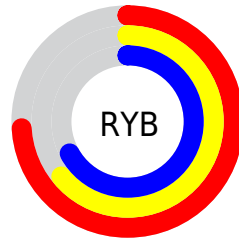
The Hex color **BCA4AA** is a light color, and the websafe version is hex **999999**. A complement of this color would be **A4BCB6**, and the grayscale version is **ACACAC**.

A 20% lighter version of the original color is **F4DBE1**, and **877076** is the 20% darker color. If you saturate the color by 10%, you get **BC919C**, and if you desaturate by 10%, it is **BCB7B8**.

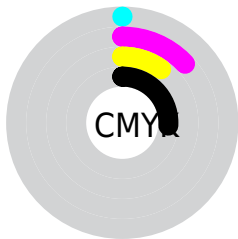
Distribution



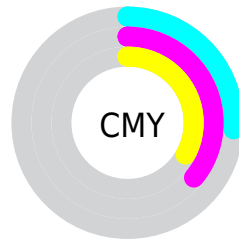
- Red (74%)
- Green (64%)
- Blue (67%)



- Red (74%)
- Yellow (64%)
- Blue (67%)



- Cyan (0%)
- Magenta (13%)
- Yellow (10%)
- Black (26%)



- Cyan (26%)
- Magenta (36%)
- Yellow (33%)

Brightness & Saturation Gradients

These gradients show how the Hex color BCA4AA changes by changing the brightness by 10 percent. The first figure shows a shift by +10% for each color and the second figure -10%.

Similar to the brightness gradients but the following saturation gradients show a change of the Hex color BCA4AA by changing the saturation by 10% instead.

■ BCA4AA

■ BCA4AA

FFFFFF

■ A18A90

■ F4DBE1

■ 877076

■ FFF7FE

■ 6D585D

■ 554046

■ 3D2A2F

■ 27161B

■ 120000

■ 000000

■ BCA4AA

■ BCA4AA

 BC919C

 BCB7B8

 BC7E8E

 BCCAC6

 BC6C80

 BCDCD4

 BC5972

 BCEFE2

 BC4663

 BCFFF1

 BC3355

 BCFFFF

 BC2047

 BC0E39

 BC002F

Harmonies

Analogous

The Analogous color harmony consists of three colors that are next to each other on the color wheel.



B6A5B3



BCA4AA



BDA5A1

Triad

The Triadic color harmony groups three colors that are evenly spaced from another and form a triangle on the color wheel.



BCA4AA



A7AC9B



98ADB9

Complementary

The Complementary color scheme is a pair of colors which are on the opposite of each other on the color wheel.



BCA4AA



A4BCB6

Split Complementary

Split-complementary colors differ from the complementary color scheme. The scheme consists of three colors, the original color and two neighbors of the complement color.



94AFB3



BCA4AA



9DAEA1

Square

The Square scheme is like the rectangle color scheme, but the four colors are evenly spaced on the color wheel.



BCA4AA



B1A998



96AFAA



A1ABBB

Rectangle

The Rectangle color scheme consists of four colors that form a rectangle on the color wheel.



BCA4AA



BBA69D



96AFAA



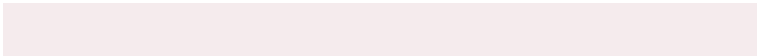
96AEB7

Sweetspot

The Sweet Spot groups the original color and five complimentary colors.



BCA4AA



F5EBED



B6A4BC



7A7476



FAFAFA



7A7A7A

Same Dimension

The Same Dimension uses a secret algorithm to generate beautiful new colors.



BCA4AA



F5D0D9



BCAAA4



5E5557



9E0028



1F0008

Inverse Universe

The Inverse Universe completely reimagines the original color for something new.



BCA4AA



F5D0D9



A4B6BC



5E5557



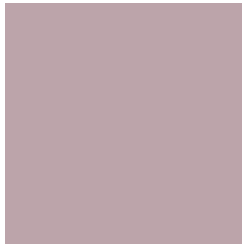
9E0028



1F0008

Previews

White Background



This preview shows how the Hex color BCA4AA looks on a white background.

Color Contrast Check

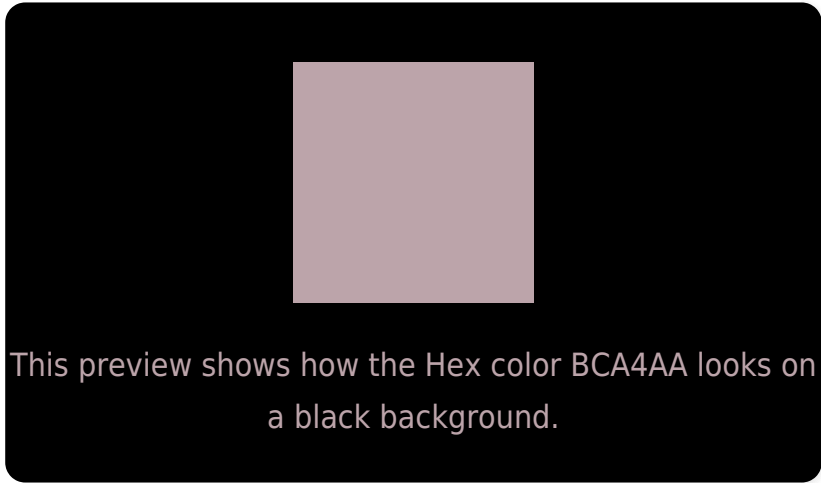
Large Text (above 18pt) WCAG AA × Fail

Any Text WCAG AA × Fail

Large Text (above 18pt) WCAG AAA × Fail

Any Text WCAG AAA × Fail

Black Background



Color Contrast Check

Large Text (above 18pt) WCAG AA ✓ Pass

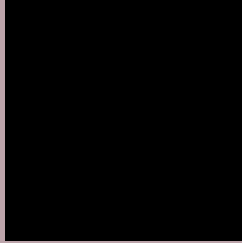
Any Text WCAG AA ✓ Pass

Large Text (above 18pt) WCAG AAA ✓ Pass

Any Text WCAG AAA ✓ Pass

If you want to check with other color combinations, try the [Color Contrast Checker](#).

Hex BCA4AA Background



This preview shows how black text looks on a background with the Hex color BCA4AA.

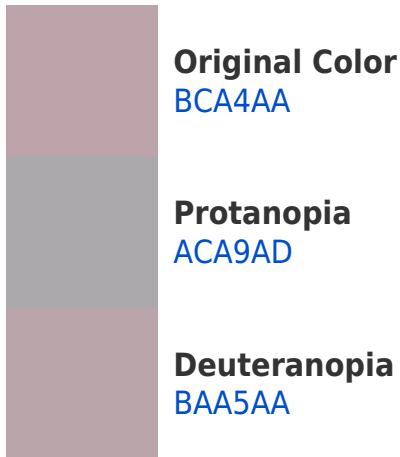


This preview shows how white text looks on a background with the Hex color BCA4AA.

Color Blindness Simulation

Color vision deficiency is a very complex topic, and I could not describe the different causes any better than Wikipedia does, so if you want to learn more, you should check out their [article about color blindness](#).

Dichromacy





Tritanopia
BDA3B0

Trichromacy



Original Color
BCA4AA

Protanomaly
B2A7AC

Deuteranomaly
BBA5AA

Tritanomaly
BDA3AE

Monochromacy



Original Color
BCA4AA

Achromatopsia
ACACAC

Achromatomaly
B2A9AB

CSS Examples

Text

The CSS property to change the color of the text to Hex BCA4AA is called "color". The color property can be set on classes, ids or directly on the HTML element.

This example shows how text in the color #BCA4AA looks like.

```
.text, #text, p{  
    color:#BCA4AA  
}
```

If you want to add a text shadow in that color use the text-shadow property, you can generate a text shadow directly with our [CSS Text Shadow Generator](#).

Here you see how black text with a 4 pixel #BCA4AA colored shadow looks like.

```
.shadow{ text-shadow: 4px 4px 2px #BCA4AA
}
```

Border

The CSS property to change the border of an element to Hex BCA4AA is called "border". The border property can be set on classes, ids or directly on the HTML element.

This example shows the color as border, it can be applied via the CSS property "border" or "border-color".

```
.border, #border, table{ border:4px solid
#BCA4AA }
```

If only the border color should be changed use the property `border-color`.

```
.border{ border-color:#BCA4AA }
```

If you want to add a box shadow in that color use:

Here you see how a box with a 4 pixel #BCA4AA colored shadow looks like.

```
.boxshadow{ -moz-box-shadow:4px 4px 4px  
4px #BCA4AA; -webkit-box-shadow:4px 4px  
4px 4px #BCA4AA; box-shadow:4px 4px 4px  
4px #BCA4AA }
```

Background

The CSS property to change the background color of an element to Hex BCA4AA is called "background". The background property can be set on classes, ids or directly on the HTML element.

```
.background, #background, body{  
background:#BCA4AA }
```

If only the background color should be changed can be used:

```
.background{ background-color:#BCA4AA }
```

This example shows the color as background, it is applied via the CSS property "background".

To optimize and compress your CSS code, you can use our [online CSS compressor and optimizer](#) based on csstidy. If you want to create a linear or radial gradient as background or border, check our [CSS Gradient Generator](#).

Hey! You found this booklet interesting? Support Converting Colors with the new Membership Option!

The pro membership hides all ads, plus gives you double the colors in the color bucket, and more awesome pro features!

[Learn more, Memberships starting at \\$2.50/m!](#)

**Follow me
on Twitter!**

@ConvertingColor